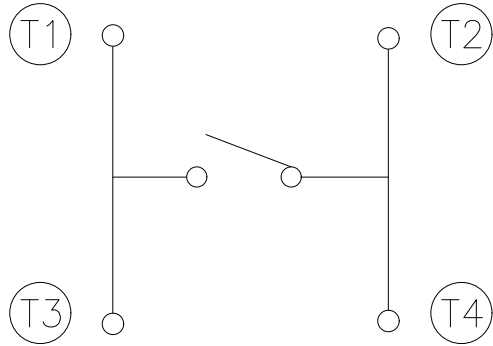
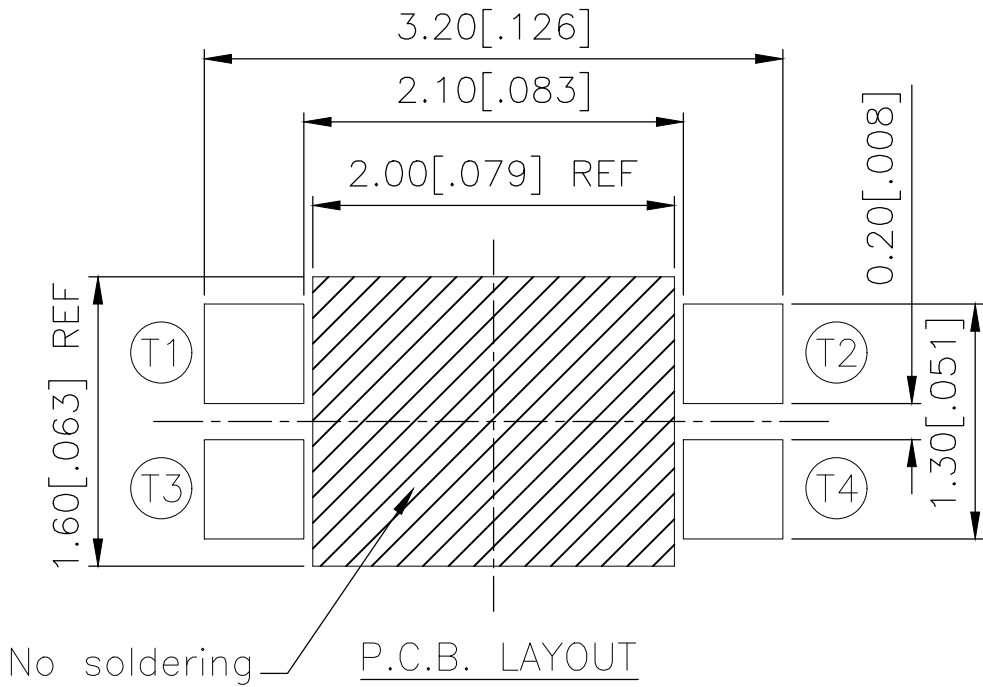
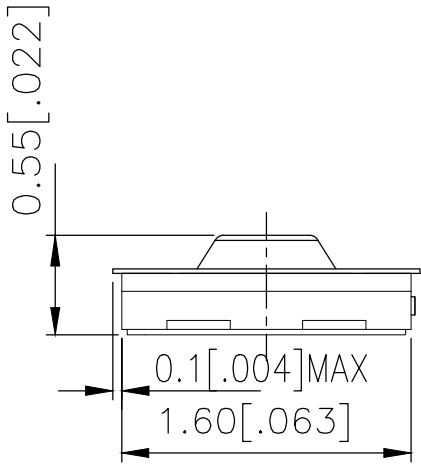
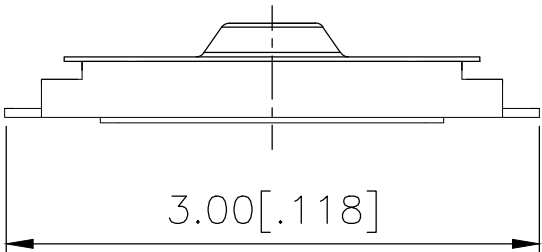
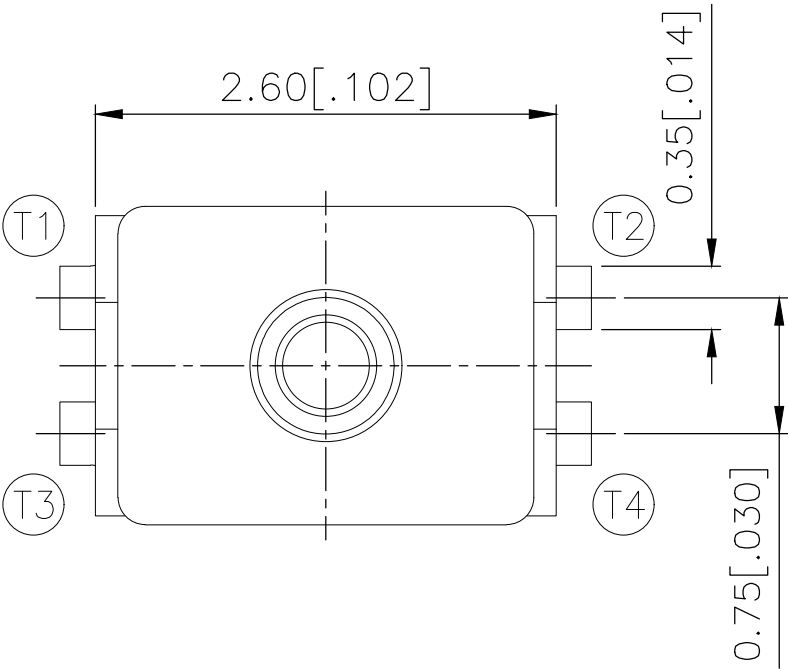


REVISIONS					
P	LTR	DESCRIPTION	DATE	DWN	APVD
	1	NEW DRAWING	04JUL2018	GCM	AS



CIRCUIT DIAGRAM

160±50	USLPT2616CT2TR	2337224-1
ACTUATION FORCE (gf)	SMART PART NUMBER	PART NUMBER

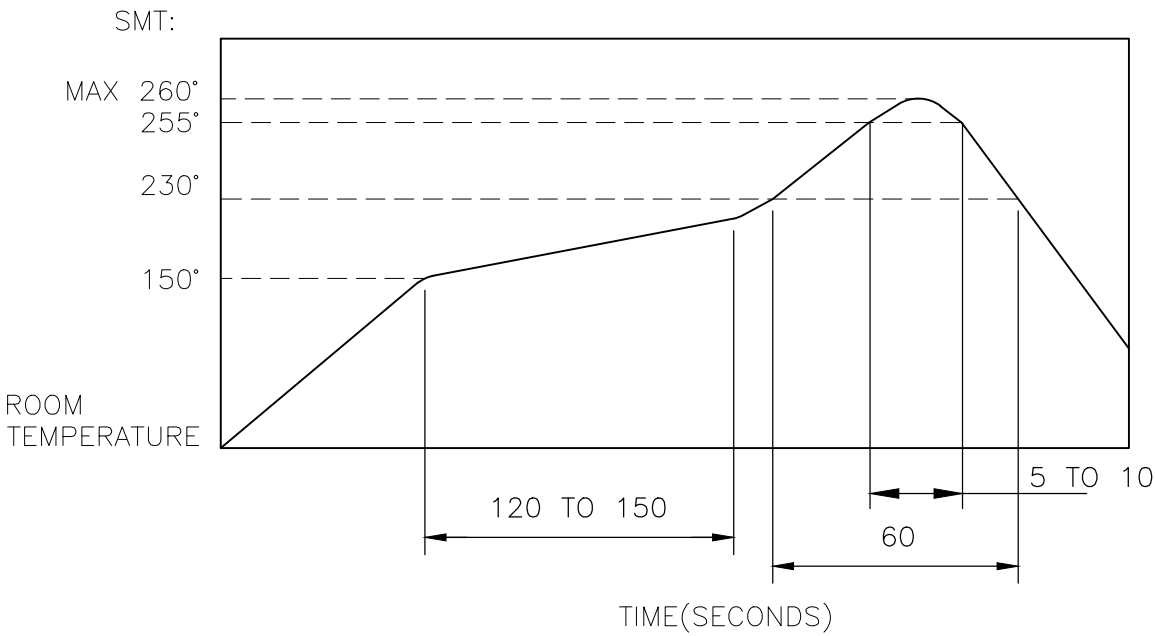
THIS DRAWING IS A CONTROLLED DOCUMENT.		DWN 04JUL2018 GANESH C M	<div>PRELIMINARY</div> <div>TE Connectivity Ltd.</div> <div>SWITCH, TACTILE, LOW-PROFILE, ULTRA-MINI, 2.6 x 1.6 x 0.55, TAB</div>		
DIMENSIONS: mm		CHK 04JUL2018 ALEXANDER SHARPE			
		APVD 04JUL2018 ALEXANDER SHARPE			
TOLERANCES UNLESS OTHERWISE SPECIFIED:		PRODUCT SPEC			
MATERIAL		FINISH	APPLICATION SPEC	SIZE	CAGE CODE
-		-	WEIGHT	A3	00779
			CUSTOMER DRAWING	SCALE	SHEET
				—	1 of 3
					REV 1

REVISIONS					
P	LTR	DESCRIPTION	DATE	DWN	APVD
	—	SEE SHEET 1	—	—	—

NOTES:

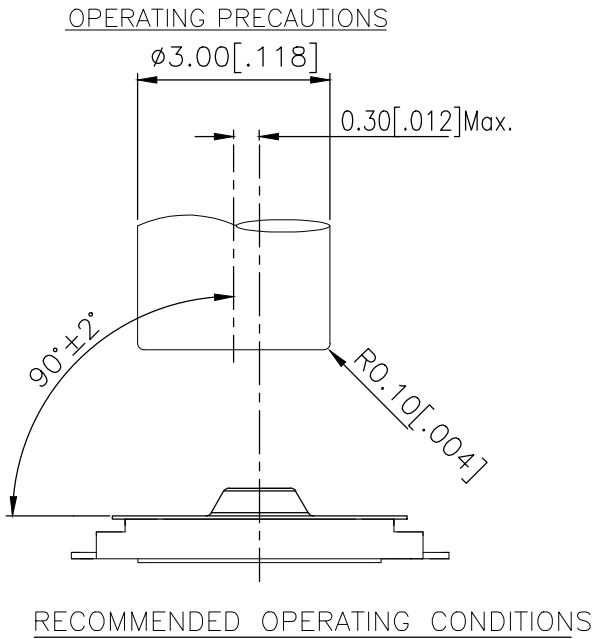
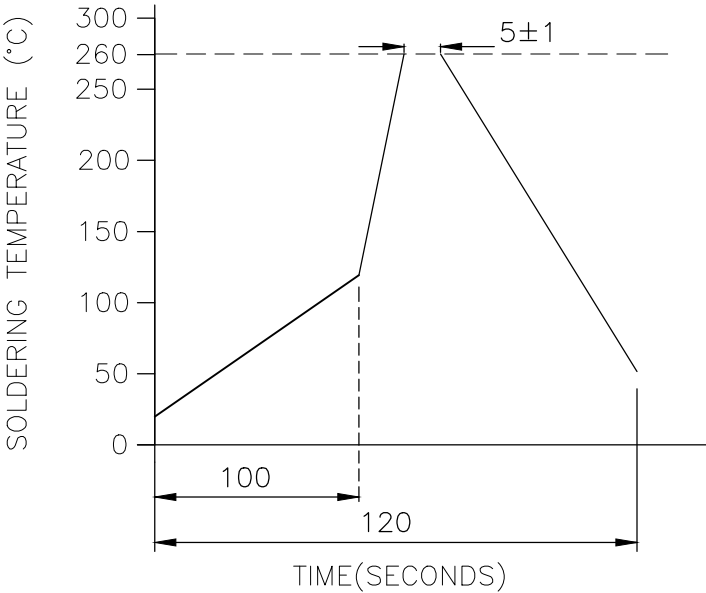
1. MATERIALS:
TERMINAL: COPPER ALLOY, SILVER FINISH
BASE: THERMOPLASTIC, BLACK
TAPE: POLYAMIDE
ACTUATOR: POLYIMIDE
CONTACT: STAINLESS STEEL, SILVER FINISH
2. COMPLIANCE:
ALL MATERIALS AND FINISHES SHALL COMPLY WITH
EU DIRECTIVE 2002/95/EC OF 27JAN2003(RoHS)
3. SPECIFICATIONS:
RATING: 10 μ A, 2V DC MINIMUM TO 20 mA, 15V DC MAXIMUM
CONTACT RESISTANCE: 500m Ω MAXIMUM (INITIAL)
INSULATION RESISTANCE: 50M Ω MINIMUM (INITIAL)
DIELECTRIC STRENGTH: 250 V AC, 1 MINUTE
OPERATING LIFE: 200,000 CYCLES WITH LOAD
TRAVEL: 0.11 \pm 0.05 [.004 \pm .002]
ACTUATION FORCE: 160 \pm 50gf
OPERATING TEMPERATURE: -40° TO 85°C
STORAGE TEMPERATURE: -40° TO 85°C

4. SOLDER CONDITIONS:



THE CONDITON NOTED ABOVE IS THE TEMPERATURE OF THE COPPER FOIL ON THE SURFACE OF THE PCB. THERE ARE CASES WHERE THE TEMPERATURE OF THE BOARD GREATLY DIFFERS FROM THE SURFACE OF THE SWITCH. DO NOT ALLOW THE SURFACE TEMPERATURE OF THE SWITCH TO EXCEED 260°C.

WAVE SOLDER:



MANUAL SOLDERING:


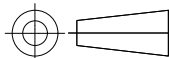
SOLDERING TEMPERATURE	350°C MAXIMUM
CONTINUOUS SOLDERING TIME	3 SECONDS MAXIMUM

HANDLING PRECAUTIONS:

1. CARE SHOULD BE EXERCISED SO THAT FLUX FROM THE TOP SURFACE OF THE PRINTED CIRCUIT BOARD DOES NOT ADHERE TO THE SWITCH.
2. DO NOT WASH THE SWITCH.

5. OPERATING PRECAUTIONS:

1. DO NOT ACTUATE THE SWITCH WITH EXCESSIVE FORCE
2. DISCONTINUE FORCE AFTER THE SWITCH HAS BEEN ACTUATED SO AS TO AVOID DEFORMATION OF THE COMPONENTS OF THE SWITCH. DEFORMATION OF THE COMPONENTS MAY CAUSE THE SWITCH TO MALFUNCTION.
3. ALIGN THE PLUNGER WITH THE SWITCH TO INSURE PROPER OPERATION

THIS DRAWING IS A CONTROLLED DOCUMENT.		DWN 04JUL2018 GANESH C M	<div></div> TE Connectivity Ltd.				
		CHK 04JUL2018 ALEXANDER SHARPE					
DIMENSIONS: mm	TOLERANCES UNLESS OTHERWISE SPECIFIED:	APVD 04JUL2018 ALEXANDER SHARPE	NAME				
	0 PLC ± –	PRODUCT SPEC	SWITCH, TACTILE, LOW-PROFILE, ULTRA-MINI, 2.6 x 1.6 x 0.55, TAB —				
	1 PLC ± –	—					
	2 PLC ± 0.1 [.004]	APPLICATION SPEC					
	3 PLC ± –	—					
4 PLC ± –	—	—	SIZE	CAGE CODE	DRAWING NO	RESTRICTED TO	
MATERIAL	FINISH	WEIGHT	A3	00779	C-2337224	—	
—	—	CUSTOMER DRAWING			SCALE	SHEET	REV
			—		2	OF 3	1

PRELIMINARY

REVISIONS					
P	LTR	DESCRIPTION	DATE	DWN	APVD
	—	SEE SHEET 1	—	—	—

6. STORAGE CONDITIONS:

AVOID THE FOLLOWING AS EXPOSURE MAY AFFECT THE PERFORMANCE AND/OR THE SOLDERABILITY OF THE SWITCH

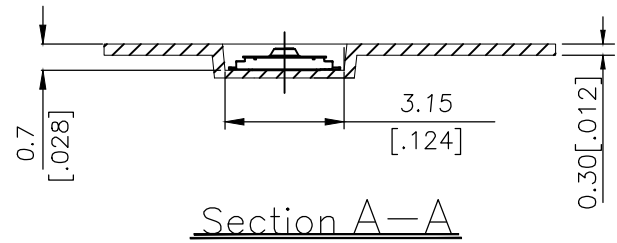
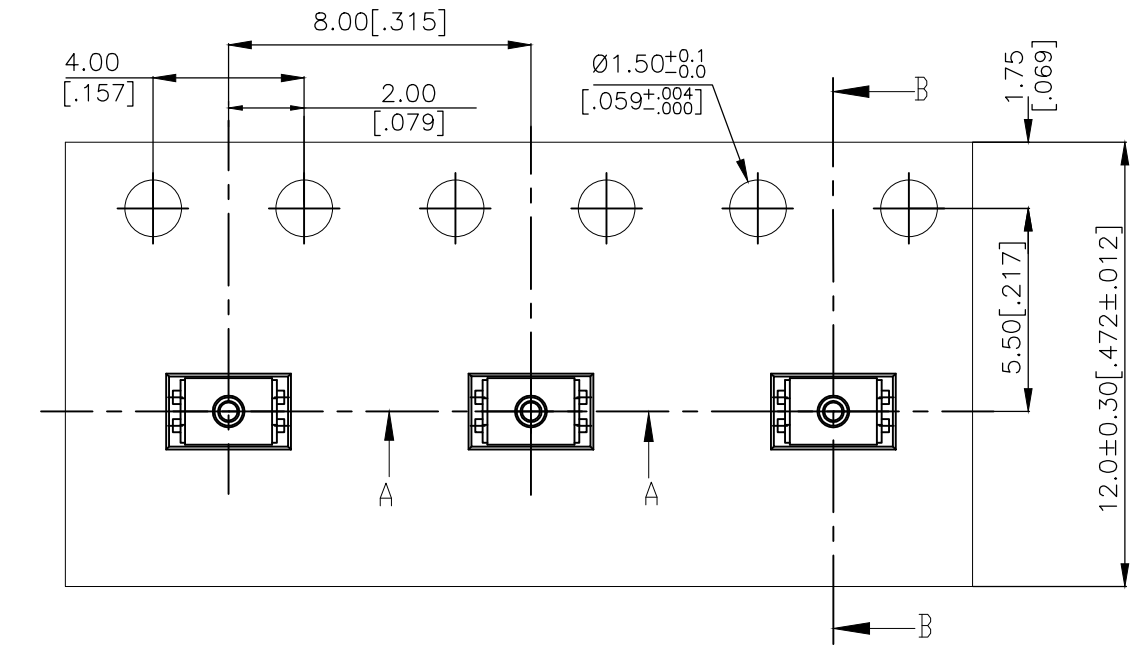
- 1. TEMPERATURE OF −10° TO 40°C AND 85% HUMIDITY
- 2. EXPOSURE TO CORROSIVE GAS
- 3. STORAGE OVER 6 MONTHS
- 4. EXPOSURE TO DIRECT SUNLIGHT

STORAGE CONDITIONS SHOULD PREVENT HEAVY IMPACT OR LOADING

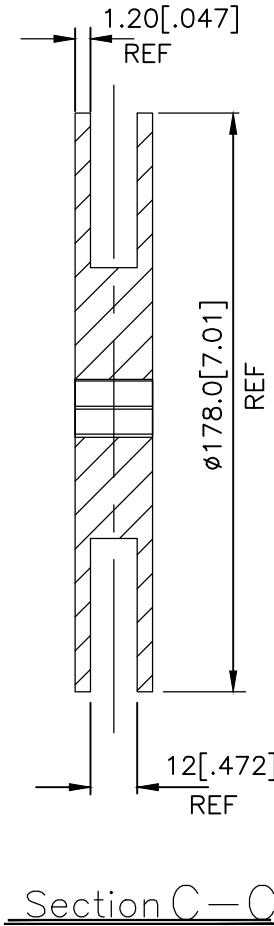
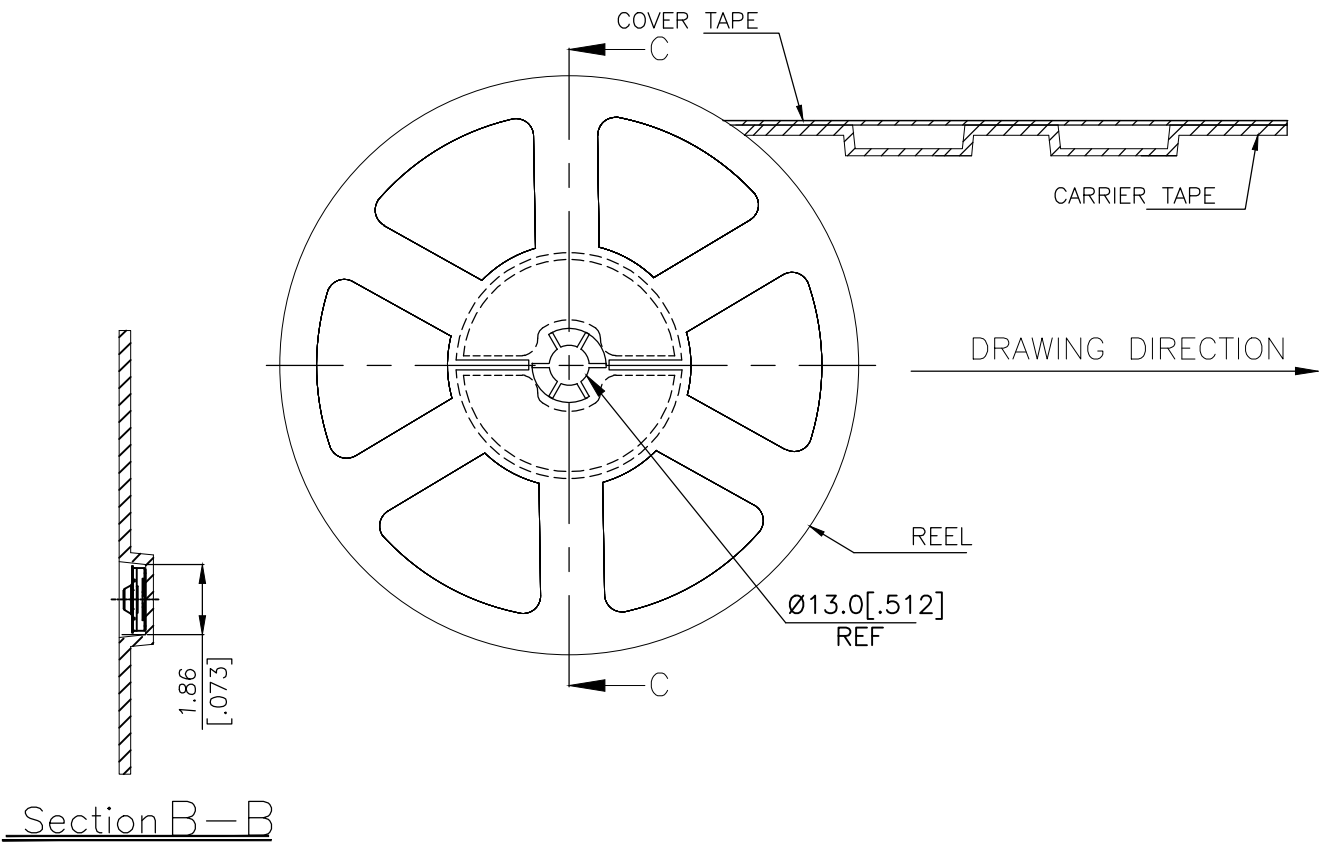
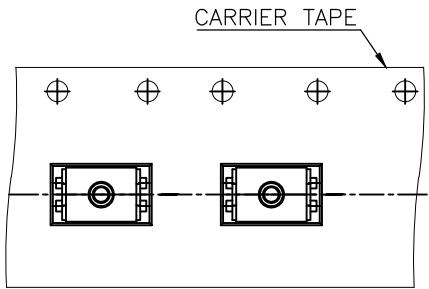
AFTER OPENING THE PACKAGE, UNUSED SWITCHES MUST BE REPACKAGED IN A MOISTURE-PROOF AND AIRTIGHT ENVIRONMENT

7. PACKAGING:
2,500 SWITCHES PER REEL

THE DIMENSIONS OF CARRIER TAPE AND REEL



ORIENTATION OF PILOT HOLES



PRELIMINARY

THIS DRAWING IS A CONTROLLED DOCUMENT.		DWN GANESH C M 04JUL2018	TE Connectivity Ltd.		
		CHK ALEXANDER SHARPE 04JUL2018			
		APVD ALEXANDER SHARPE 04JUL2018	NAME SWITCH, TACTILE, LOW-PROFILE, ULTRA-MINI, 2.6 x 1.6 x 0.55, TAB		
		PRODUCT SPEC			
		APPLICATION SPEC			
		WEIGHT	SIZE A3	CAGE CODE 00779	DRAWING NO C-2337224
		CUSTOMER DRAWING	SCALE —	SHEET 3 OF 3	REV 1