

**PLEASE CHECK WWW.MOLEX.COM FOR LATEST PART INFORMATION**

**Part Number:** [0919150001](#)  
**Status:** **Active**  
**Description:** 2.54mm (.100") Pitch SIM Card Connector, Lead Free

**Documents:**

[3D Model](#) [Product Specification PS-91915-001 \(PDF\)](#)  
[Drawing \(PDF\)](#) [RoHS Certificate of Compliance \(PDF\)](#)

**General**

Product Family Memory Card Sockets  
Series [91915](#)  
Button Type N/A  
Component Type I/O Header (Card)  
Product Name SIM  
Type N/A

**Physical**

Card Detection Switch Yes  
Circuits (Loaded) 6  
Color - Resin Black  
Durability (mating cycles max) 10,000  
Ejector Button Side No Ejector Button Present  
Entry Angle Vertical  
Keying to Mating Part Yes  
Material - Metal Phosphor Bronze  
Material - Plating Mating Gold  
Material - Plating Termination Tin  
Material - Resin High Temperature Thermoplastic  
PCB Mounting Side Reverse  
PCB Retention None  
Packaging Type Embossed Tape on Reel  
Pitch - Mating Interface (in) 0.100 In  
Pitch - Mating Interface (mm) 2.54 mm  
Plating min: Mating (µin) 4  
Plating min: Mating (µm) 0.1  
Plating min: Termination (µin) 120  
Plating min: Termination (µm) 3  
Ports 8  
Temperature Range - Operating -40°C to +85°C  
Termination Interface: Style Surface Mount

**Electrical**

Current - Maximum per Contact 0.5A  
Voltage - Maximum 15V

**Solder Process Data**

Lead-free Process Capability Reflow Capable (SMT only)  
Max. Cycles at Max. Process Temperature 2  
Process Temperature max. C 240

**Material Info**

**Reference - Drawing Numbers**

Product Specification PS-91915-001  
Sales Drawing SD-91915-001, SD-91915-003

**EU RoHS**

**ELV and RoHS  
Compliant**

**REACH SVHC**

**Contains SVHC: No**

**Halogen-Free**

**Status**

**Not Reviewed**

**China RoHS**



**Need more information on product  
environmental compliance?**

Email [productcompliance@molex.com](mailto:productcompliance@molex.com)  
For a multiple part number RoHS Certificate of  
Compliance, [click here](#)

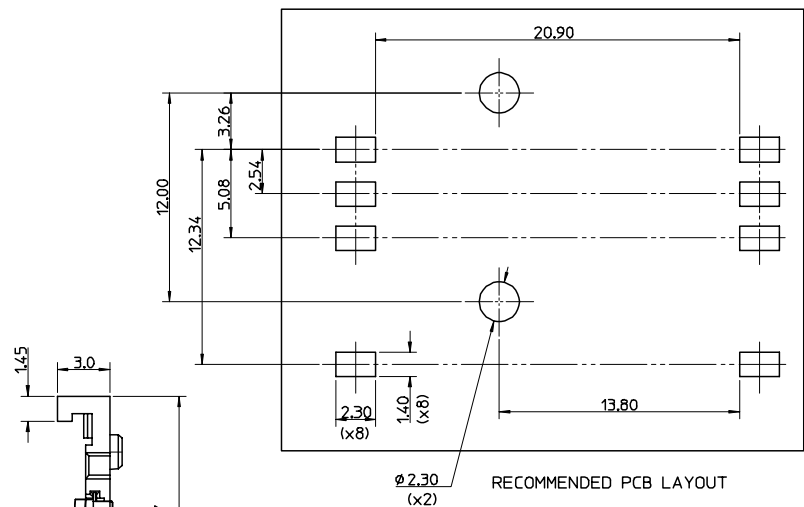
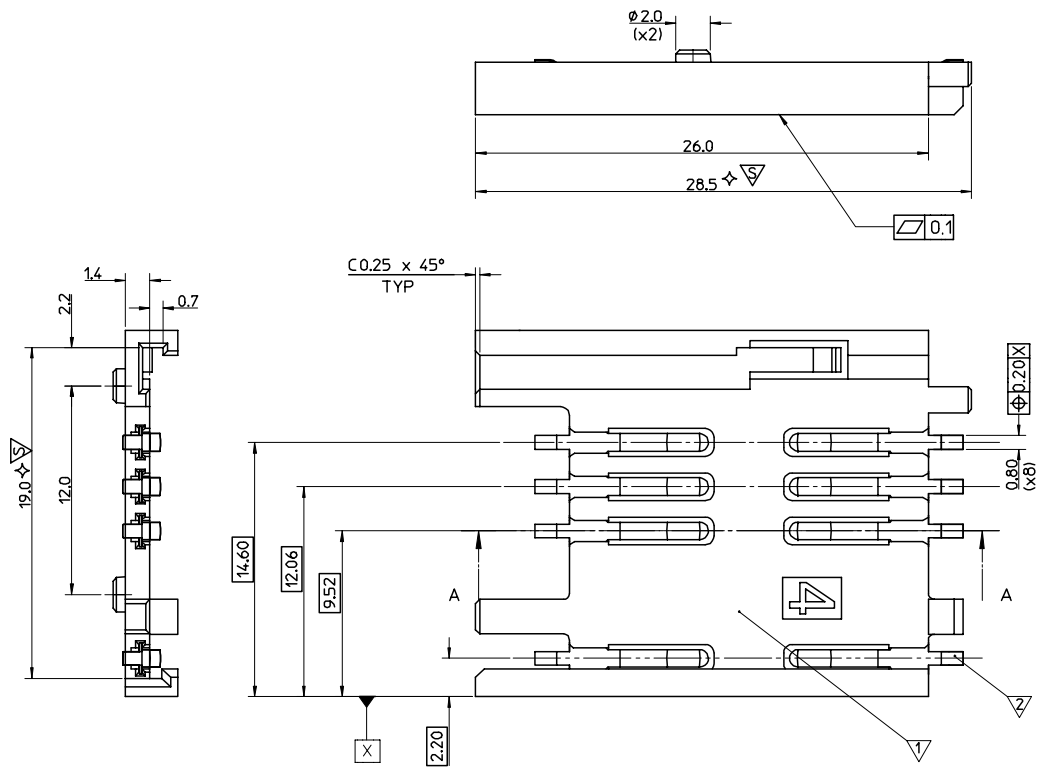
Please visit the [Contact Us](#) section for any  
non-product compliance questions.

**Search Parts in this Series**

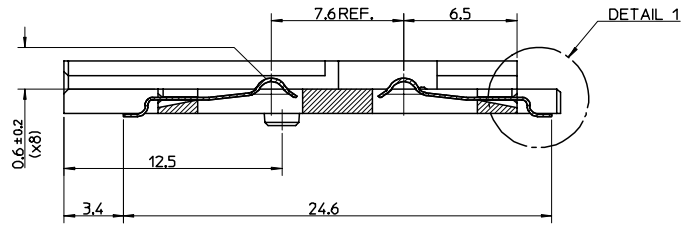
[91915Series](#)

This document was generated on 04/13/2010

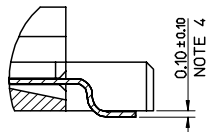
**PLEASE CHECK [WWW.MOLEX.COM](http://WWW.MOLEX.COM) FOR LATEST PART INFORMATION**



- NOTES:
1. PACKAGING: PARTS TO BE PACKAGED IN TAPE & REEL. SEE DRAWING SD-91915-003
  2. SEE PRODUCT SPECIFICATION PS-91915-001
  3. ⚡ THIS IS A CUSTOMER SPECIFIC SYMBOL
  4. TAILS ON EACH SIDE OF CONNECTOR TO LIE WITHIN 0.12mm OF EACH OTHER.

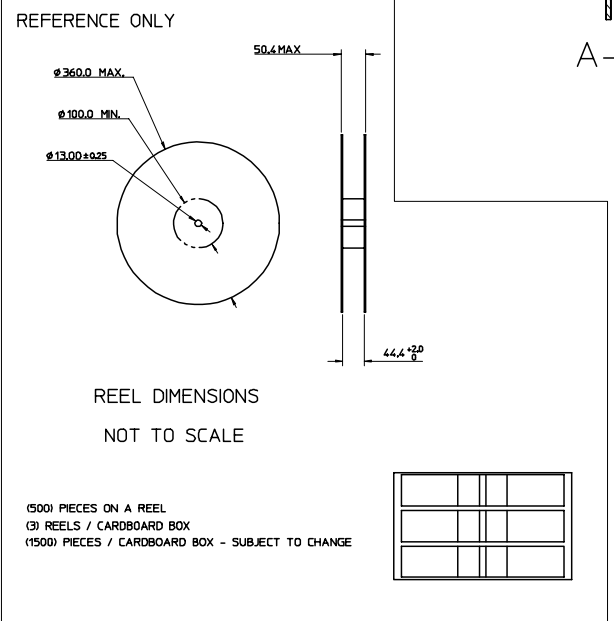
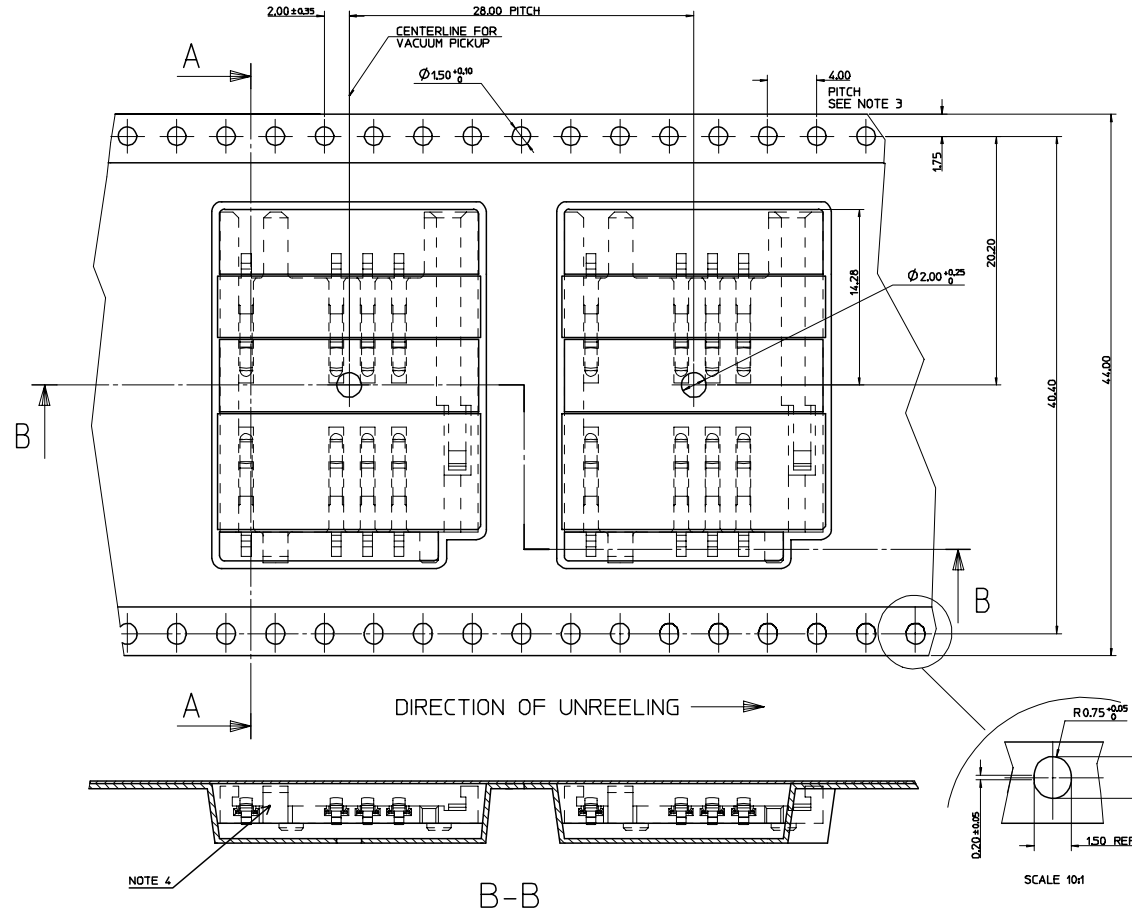
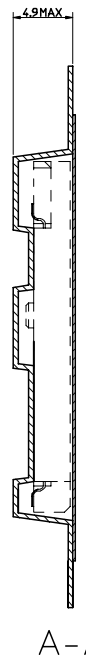
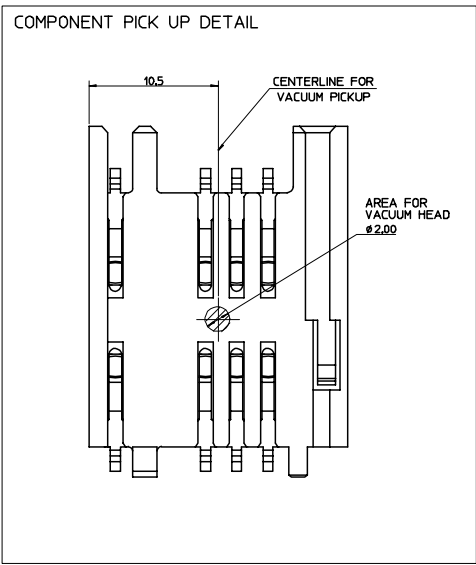


ITEM	COMPONENT	QTY	MATERIAL
▽	HOUSING	1	LCP E130i, UL94 V-0, COLOUR BLACK RoHS & LEAD FREE COMPLIANT
▽	TERMINAL	8	0.15 PHOSPHOR BRONZE Au FLASH OVER Pd/Ni Sn ON SMT TAILS



COPLANARITY DETAIL 1

ORIGINAL RELEASE EIC NO: E2006-1110 DRAWN: CARTON 2007/02/14 CHKD: 2007/02/15 APPR: EFOLAN 2007/02/23 REV: A	QUALITY SYMBOLS ▽=0 ▽=0 ▽=3	GENERAL TOLERANCES (UNLESS SPECIFIED) <table border="1"> <tr> <th></th> <th>mm</th> <th>INCH</th> </tr> <tr> <td>4 PLACES</td> <td>± 0.10</td> <td>± 0.004</td> </tr> <tr> <td>3 PLACES</td> <td>± 0.15</td> <td>± 0.006</td> </tr> <tr> <td>2 PLACES</td> <td>± 0.20</td> <td>± 0.008</td> </tr> <tr> <td>1 PLACE</td> <td>± 0.30</td> <td>± 0.012</td> </tr> <tr> <td colspan="3">ANGULAR ± 2°</td> </tr> </table>		mm	INCH	4 PLACES	± 0.10	± 0.004	3 PLACES	± 0.15	± 0.006	2 PLACES	± 0.20	± 0.008	1 PLACE	± 0.30	± 0.012	ANGULAR ± 2°			DIMENSION STYLE <b>MM ONLY</b>	SCALE <b>1:1</b>	DESIGN UNITS <b>METRIC</b>	THIRD ANGLE PROJECTION
		mm	INCH																					
	4 PLACES	± 0.10	± 0.004																					
	3 PLACES	± 0.15	± 0.006																					
2 PLACES	± 0.20	± 0.008																						
1 PLACE	± 0.30	± 0.012																						
ANGULAR ± 2°																								
DRAWN BY: DMAHER DATE: 2006/11/28 CHECKED BY: FDUGGAN DATE: 2006/11/28 APPROVED BY: EFOLAN DATE: 2006/11/28		MATERIAL NO.: 91915 0001 DOCUMENT NO.: SD-91915-001		TITLE <b>2.54 PITCH SIM CONNECTOR</b>		SHEET NO. <b>1 OF 1</b>																		
DRAFT WHERE APPLICABLE MUST REMAIN WITHIN DIMENSIONS		MOLEX INCORPORATED		THIS DRAWING CONTAINS INFORMATION THAT IS PROPRIETARY TO MOLEX INCORPORATED AND SHOULD NOT BE USED WITHOUT WRITTEN PERMISSION																				
SIZE <b>A2</b>																								



- NOTES:
- MATERIAL:  
CARRIER TAPE: VOLUME CONDUCTIVE POLYSTYRENE, 0.40 REF THICK, BLACK  
COVER TAPE: COLD SEAL POLYESTER, 0.06 REF THICK, TRANSPARENT
  - PEEL FORCE OF THE COVER TAPE IS 0.1N TO 1.0N  
AT MAXIMUM PEEL SPEED OF 300mm/min. ±10%
  - PITCH TOLERANCE OVER ANY 10 PITCHES ±0.2
  - TAPE & REEL PACKAGING FOR PART NUMBERS 919150001 & 919150002.

TO CUSTOMER ASSEMBLY MACHINE →

ORIGINAL RELEASE EC NO: E2006-110 DRAWING/CARTON 2007/02/14 CHKD: APPR:	QUALITY SYMBOLS	GENERAL TOLERANCES (UNLESS SPECIFIED)	SCALE 4:1	DESIGN UNITS METRIC	THIRD ANGLE PROJECTION	REVISE ON CAD ONLY	
	DESCRIPTION MOLEX REEL	4 PLACES ± --- ± --- 3 PLACES ± --- ± --- 2 PLACES ± 0.10 ± --- 1 PLACE ± 0.2 ± --- ANGULAR ± 2 °	DIMENSION STYLE MM ONLY	TITLE BLISTER PACKAGING SIM CONNECTOR			
		DRAFT WHERE APPLICABLE MUST REMAIN WITHIN DIMENSIONS		DRAWN BY DMAHER 2006/11/28	Molex MOLEX INCORPORATED		
				CHECKED BY FDUGGAN 2006/11/28	APPROVED BY EFOLAN 2006/11/28	MATERIAL NO. NOTE 4	DOCUMENT NO. SD-91915-003
THIS DRAWING CONTAINS INFORMATION THAT IS PROPRIETARY TO MOLEX INCORPORATED AND SHOULD NOT BE USED WITHOUT WRITTEN PERMISSION							