

4

3

2

1

THIS DRAWING IS UNPUBLISHED.

RELEASED FOR PUBLICATION

© COPYRIGHT

ALL RIGHTS RESERVED.

LOC

DIST


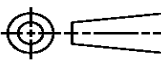
REVISIONS

P	LTR	DESCRIPTION	DATE	DWN	APVD
	B1	ECR-14-003119	04MAR2014	GK	HMR

REPLACED BY OCEAN STYLE APPLICATOR PART
NUMBER 2151851-1

FOR REPLACEMENT PARTS FOR APPLICATOR 1426433
REFER TO ADDITIONAL PAGE(S). SPARE PARTS KIT (IF LISTED)
WILL REMAIN AVAILABLE.

THE REPLACEMENT OCEAN STYLE APPLICATOR HAS THE
SAME TERMINATOR/PRESS INTERFACE AS APPLICATOR
1426433

THIS DRAWING IS A CONTROLLED DOCUMENT.		DWN GOPALAKRISHNA HV		 TE Connectivity			
DIMENSIONS:		CHK RAGHAVENDRA					
		APVD RAGHAVENDRA		NAME SIDE FEED HD-I APPLICATOR			
		PRODUCT SPEC					
		APPLICATION SPEC					
MATERIAL		WEIGHT		SIZE A3	CAGE CODE	DRAWING NO C- 1426433	RESTRICTED TO
FINISH		CUSTOMER DRAWING		SCALE		SHEET 1 OF 2	REV B1

THIS DRAWING IS A CONTROLLED DOCUMENT

LAYOUT L1426433
SET UP GAGE 458637-3
2002
BY AMP INCORPORATED. ALL RIGHTS RESERVED.
THIS DRAWING IS UNPUBLISHED.
© COPYRIGHT 2002

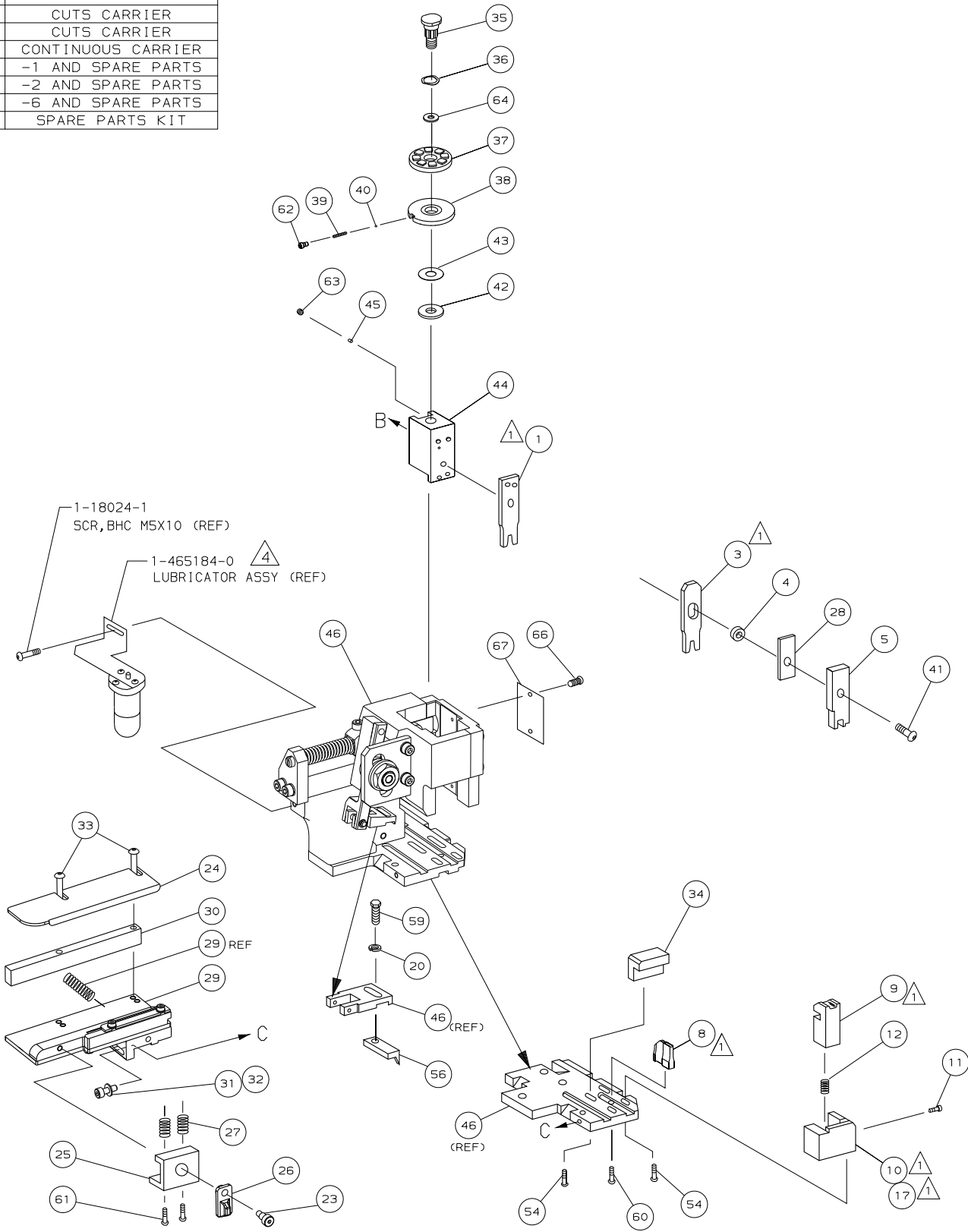
PART NUMBER	REV	FIRST USED	TERMINATOR	FEED TYPE	DESCRIPTION
1426433-1	B	-	LEADMAKER	MECH POST FEED	CUTS CARRIER
1426433-2	B	-	BENCH	MECH PRE FEED	CUTS CARRIER
1426433-6	B	-	LEADMAKER	MECH POST FEED	CONTINUOUS CARRIER
7-1426433-1	B	-	LEADMAKER	MECH POST FEED	-1 AND SPARE PARTS
7-1426433-2	B	-	BENCH	MECH PRE FEED	-2 AND SPARE PARTS
7-1426433-6	B	-	LEADMAKER	MECH POST FEED	-6 AND SPARE PARTS
7-1426433-7	A	-	-	-	SPARE PARTS KIT

CRIMP DATA HIROSE TERMINAL AMP CRIMP SPECS			
TERMINAL NAME: HIROSE CRIMPING CONTACT FOR SOCKET.			
CRIMP	SIZE	TYPE	RANGE
WIRE	1.07 [.042 IN]	F	28 - 24 AWG
INSUL	1.40 [.055 IN]	F	0.75-1.27 [.030-.050 IN]
WIRE STRIP LENGTH		APPL INSTRUCTION	
1.8-2.3 [.071-.090 IN]		408-8322	
TERMINAL		-	FEED
APPL SPEC		NONE	5.50 [.217 IN]
TERMINALS APPLIED			
AMP TERM PN	MFR TERM PN	-	-
286772-1	DF3-2428SCF	-	-
286772-2	DF3-2428SCFC	4	-
-	-	-	-
-	-	-	-
-	-	-	-
-	-	-	-
-	-	-	-
WIRE SIZE	CRIMP HEIGHT	PIN PN AND LENGTH [IN]	
mm ² AWG			
24 AWG	0.69 ±0.05 [.027 ±.002 IN]	5-354779-5 [.3265]	
26 AWG	0.64 ±0.05 [.025 ±.002 IN]	5-354779-8 [.3280]	
28 AWG	0.61 ±0.05 [.024 ±.002 IN]	6-354779-0 [.3290]	
-	-	-	
-	-	-	
-	-	-	
-	-	-	
-	-	-	
-	-	-	
-	-	-	
-	-	-	
-	-	-	
-	-	-	
-	-	-	

1. RECOMMENDED SPARE PARTS.
2. GREASE RAM, CAM, CAM FOLLOWER AND FEED ROD LIGHTLY.
3. LUBRICATE DAILY PER THE APPLICATOR INSTRUCTION SHEET SUPPLIED WITH THE APPLICATOR.
4. CERTAIN TERMINALS REQUIRE LUBRICATION. REFER TO THE APPLICATOR INSTRUCTION SHEET FOR MORE INFORMATION.

VIEW B ROTATED 180°			
POST FEED 40 mm STROKE	POST FEED 30 mm STROKE	PRE FEED 30 mm STROKE	PRE FEED 40 mm STROKE
LOC A DIST 66			

AMP 1756 REV 3-92 21-DEC-05 06:36:57 us024474



SHORT POSITION
GUIDE OFF INSULATION BARREL

DIMENSIONS: mm [INCHES]		MATERIAL		FIN	
DO NOT SCALE PRINT.		HT TR		-	
TOLERANCES UNLESS OTHERWISE SPECIFIED:		DR 01MAY03		APP 01MAY03	
1 PLC DEC ±		L.LOFTHOUSE		F.BACKHURST	
2 PLC DEC ±		CHK -		REL 30JUL03	
3 PLC DEC ±		L.LOFTHOUSE		AMP	
ANGLES ±		NAME SIDE FEED HD-I APPLICATOR		MACHINE REF HD-I APPL	
SURF TEXTURE: ✓		SCALE -		DWG NO 1426433	
REMOVE BURRS, BREAK SHARP EDGES RO.36 MAX		CUSTOMER AND ASSEMBLY DRAWING		SHEET 1 of 1	
P F LTR		REVISION RECORD		REV B	
B ECR-05-018576		RK DEC05		RESTRICTED TO	
A SEE ECN 015A-0445-03		LJL JUL03			
APP DATE		DATE			

-	1	1	1	1	1	1	1426433	PRINT, APPLICATOR LOG SHEET	73
-	1	1	1	1	1	1	1338705-1	DOCUMENTATION PACKAGE	71
-	-	-	-	-	-	-	-	-	70
-	-	-	-	-	-	-	-	-	69
-	-	-	-	-	-	-	-	-	68
-	1	1	1	1	1	1	461264-1	PLATE, IDENTIFICATION	67
-	2	2	2	2	2	2	21017-2	SCR, DRIVE (#2x.19) ID PLATE	66
-	-	-	-	-	-	-	-	-	65
-	1	1	1	1	1	1	986950-1	WASHER, FLAT PRECISION	64
-	1	1	1	1	1	1	3-18031-0	SCR, SKT SET (M6X6) RAM	63
-	1	1	1	1	1	1	18023-9	SCR, SHC (M4X6) INS DISC	62
-	2	2	2	2	2	2	1-18024-5	SCR, BHC (M5X25) DRAG	61
-	1	1	1	1	1	1	18024-7	SCR, BHC (M4X10) ANVIL	60
-	1	1	1	1	1	1	5-18022-2	SCR, HEX (M4X8) FEED FINGER	59
-	-	-	-	-	-	-	-	-	58
-	-	-	-	-	-	-	-	-	57
-	1	1	1	1	1	1	1338685-1	PAWL, FEED	56
-	-	-	-	-	-	-	-	-	55
-	4	4	4	4	4	4	18024-8	SCR, BHC (M4x12) SHEAR HOLDER	54
-	-	-	-	-	-	-	-	-	53
-	-	-	-	-	-	-	-	-	52
-	-	-	-	-	-	-	-	-	51
-	-	-	-	-	-	-	-	-	50
-	1	1	1	1	1	1	18024-3	SCR, BHC (M3X10) CAM	49
-	-	-	-	-	-	-	-	-	48
-	1	-	1	-	-	-	1338675-1	CAM, PRE FEED 30 & 40 mm ST	47
-	1	1	1	1	1	1	1338676-1	CAM, POST FEED 30 & 40 mm ST	46
-	1	1	1	1	1	1	1320999-3	APPLICATOR BASIC SUBASSY	45
-	1	1	1	1	1	1	690191-1	PLUG, NYLON	44
-	1	1	1	1	1	1	1338660-3	RAM	43
-	1	1	1	1	1	1	690125-1	WASHER, LAMINATED	42
-	1	1	1	1	1	1	690124-1	WASHER, RAM	41
-	1	1	1	1	1	1	2-18024-6	SCR, BHC (M8X25) RAM	40
-	1	1	1	1	1	1	23241-1	BALL, STEEL	39
-	1	1	1	1	1	1	2-22278-7	SPRING, COMPRESSION	38
-	1	1	1	1	1	1	1320922-1	DISC, INSULATION	37
-	1	1	1	1	1	1	354777-1	WIRE DISC, PLASTIC	36
-	1	1	1	1	1	1	22480-5	WASHER, SPRING	35
-	1	1	1	1	1	1	690212-1	POST, RAM	34
-	1	1	1	1	1	1	1333245-2	STOP, WIRE	33
-	2	2	2	2	2	2	1-18024-0	SCR, BHC (M4X20) STRIP GUIDE	32
-	1	1	1	1	1	1	18027-2	WASHER, FLAT (M4)	31
-	1	1	1	1	1	1	1-18023-2	SCR, SKT CAP (M4X12) MOUNT BLOCK	30
-	1	1	1	1	1	1	1320908-9	SPACER, STRIP GUIDE	29
-	1	1	1	1	1	1	1633073-3	STRIP GUIDE PLATE ASSY	28
-	1	1	1	1	1	1	1-455888-0	SPACER, FRONT SHEAR DEP	27
-	2	2	2	2	2	2	1-22284-0	SPRING, DRAG	26
-	1	1	1	1	1	1	356835-1	LEVER, DRAG RELEASE	25
-	1	1	1	1	1	1	240792-1	DRAG, TERMINAL	24
-	1	1	1	1	1	1	1320928-1	PLATE, STRIP GUIDE	23
-	1	1	1	1	1	1	980371-4	SCR, SHC SHLD	22
-	-	-	-	-	-	-	-	-	21
-	1	1	1	1	1	1	18025-2	WASHER, LOCK (M4) STRIPPER	20
-	-	-	-	-	-	-	-	-	19
-	-	-	-	-	-	-	-	-	18
-	-	-	-	-	-	-	-	-	17
-	-	-	-	-	-	-	-	-	16
-	-	-	-	-	-	-	-	-	15
-	-	-	-	-	-	-	-	-	14
-	-	-	-	-	-	-	-	-	13
-	1	1	1	1	1	1	5-22280-0	SPRING, SHEAR	12
-	1	1	1	1	1	1	356885-4	STOP, SHEAR	11
-	-	1	1	-	1	1	1320921-1	HOLDER, SHEAR, FRONT (CUT)	10
-	1	1	1	1	1	1	462006-1	SHEAR, FLOAT (FRONT)	9
1	2	2	2	1	1	1	2-1333200-9	ANVIL	8
-	-	-	-	-	-	-	-	-	7
-	-	-	-	-	-	-	-	-	6
-	1	1	1	1	1	1	2-455889-0	DEPRESSOR, SHEAR (FRONT)	5
-	1	1	1	1	1	1	2-238011-3	SPACER, BLOCK CRIMPER	4
1	2	2	2	1	1	1	2-1424909-1	CRIMPER, INSULATION	3
-	-	-	-	-	-	-	-	-	2
1	2	2	2	1	1	1	3-456401-2	CRIMPER, WIRE	1
-77	-76	-72	-71	-6	-2	-1	PART NO	DESCRIPTION	ITEM NO

REVISION OF EACH ASSY NO (WHEN BLANK, USE DWG REVISION)