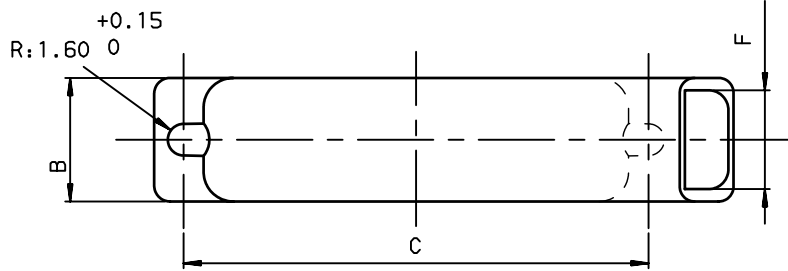


NOTE:RoHS INFORMATIONS

- The "LF" product meets European union Directives and other country regulations as described in GS-22-008.
- The product is not intended to be exposed to a manufacturing solder process.
- Packaging spec: see GS-14-920.



Dimensions are in millimeters

Shell size	Number of contacts	A ^{+0.9} / _{-0.2}	B ^{+0.10} / ₀	C ^{±0.05}	D ^{±0.10}	E ^{±0.10}	F ^{±0.10}	G ^{±0.10}	PART NUMBER
E	09	30.60	12.50	24.99	19.00	10.50	9.90	18.20	86305002BLF
A	15	38.90	12.50	33.32	20.60	12.50	9.90	22.80	863026BLF
B	25	52.80	12.50	47.04	23.60	17.00	9.90	29.40	863027BLF
C	37	69.10	12.50	63.50	29.00	24.00	9.90	37.00	863028BLF
D	50	66.70	15.30	61.11	28.00	24.00	12.70	35.00	863029BLF

European Views

www.fciconnect.com		surface ISO 1302 <input checked="" type="checkbox"/>	tolerance std ISO 406 ISO 1101	projection 	mm
		TOLERANCES UNLESS OTHERWISE SPECIFIED			Scale 5
Dr	JOUBERT	1999/01/04	ANGULAR	0.X ±0.1	size A3
Eng	PESSON	1999/01/04	LINEAR	0.XX ±0.1	ECN LS08-0186
Chr	LEGARE	1999/01/04	0.XX' ±2'	0.XXX ±0.1	Spec ref -
Appr	LEGARE	1999/01/04	Product family D-SUB		
		title POTTING PLASTIC HOODS		chg no C01-8655-1523	Rev. H
		catalog no -		CUSTOMER sheet 1 of 1	

rev	ecn no	dr	date
B	LS05-0026	MPE	2005/07/08
C	LS05-0084	MPE	2005/09/29
D	LS06-0095	LGO	2006/07/24
E	LS07-0249	MPE	2007/10/02
F	LS07-0258	LGO	2007/10/16
G	LS08-0146	MPE	2008/06/16
H	LS08-0186	MPE	2008/09/04