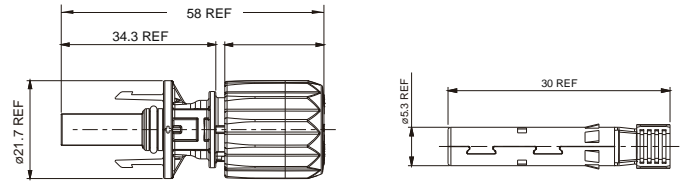
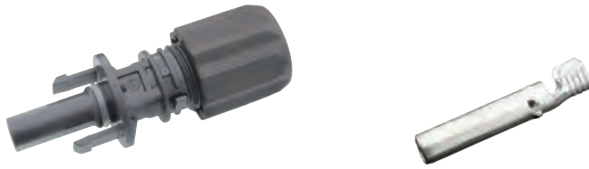
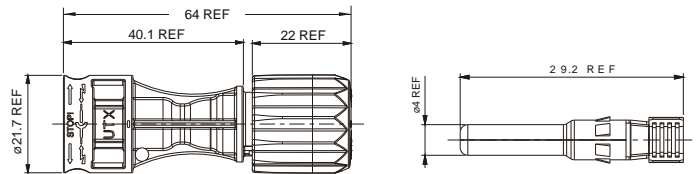
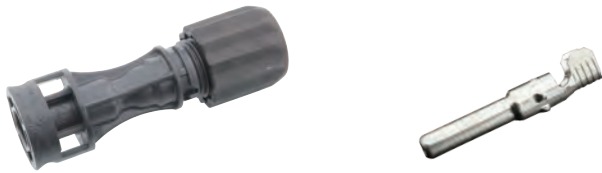


UTX series PV Cable Connector




Part Number: UTXCF.....



Part Number: UTXCM.....



Technical Data

Rated voltage	1500V DC per UL 6703 1500V DC per TÜV IEC62852 1500V DC per JET IEC61730	Cable OD range	Ø5.3mm – 7.65mm
Rated current (per IEC 62852,85°C)	25A (2.5mm ² /14AWG) 35A (4.0mm ² /12AWG) 45A (6.0mm ² /10AWG)	Unlock options	Tool unlock type(TÜV/UL/JET) or Manually unlock type(TÜV only)
Rated current (per UL6703)	15A (2.5mm ² /14AWG) 20A (4.0mm ² /12AWG) 30A (6.0mm ² /10AWG)	Ingress protection rating	IP68, mated (1 m, 1 h) & IP2X touch-proof, unmated
Rated impulse voltage	16kV(1500V DC per TÜV)	Ambient temperature range	-40°C to +85°C (TÜV) -40°C to +90°C (UL)
Typical contact resistance	≤0.3mΩ	Upper limiting temperature	+105°C
Contact material	Tin-plated Copper Alloy	Flame class	UL 94 V-0
Contact system options	Cold Formed (CF) or Stamped & Formed (S&F)*1	Overvoltage category/Pollution degree	CATIII/2
Insulation material	PPE/PA	Material safety	RoHS, REACH compliant
Type of termination	Crimping	Approvals:	   TÜV certified to IEC 62852 UL certified to UL6703 JET certified to IEC61730 R50340393 E469330 B14T0080

How to Order a Connector (please choose one code per position, below)

Part Number Coding: UTX C F A 4 A M

Product Line	Product Type	Gender	Contact type	Cable Size	Certifications	Packaging	
UTX (UTX series)	C (Connector)	F Female	A Stamped and Formed contact (S&F)	0	A Triple UL/TÜV/JET Certified	I 1 pc/bag	
				2			Without Contact
				4*2			2.5mm ² / 14AWG
		M Male	B Cold Formed contact (CF)	4*2	B*3 Only TÜV Certified	C 100 pcs/bag	
				6			4.0mm ² /12 AWG & 6.0mm ² /10AWG(S&F)
				6			4.0mm ² /12AWG(CF)
6	6.0mm ² / 10AWG(CF)	M 400 pcs/bag					

*2. When ordering a S&F contact, please use cable size order code "4" for both 4.0mm²/ 12AWG & 6.0mm²/ 10AWG.
 *3. When ordering cable connectors, please use certifications order code "B" for Manually unlock type cable gland connectors.