
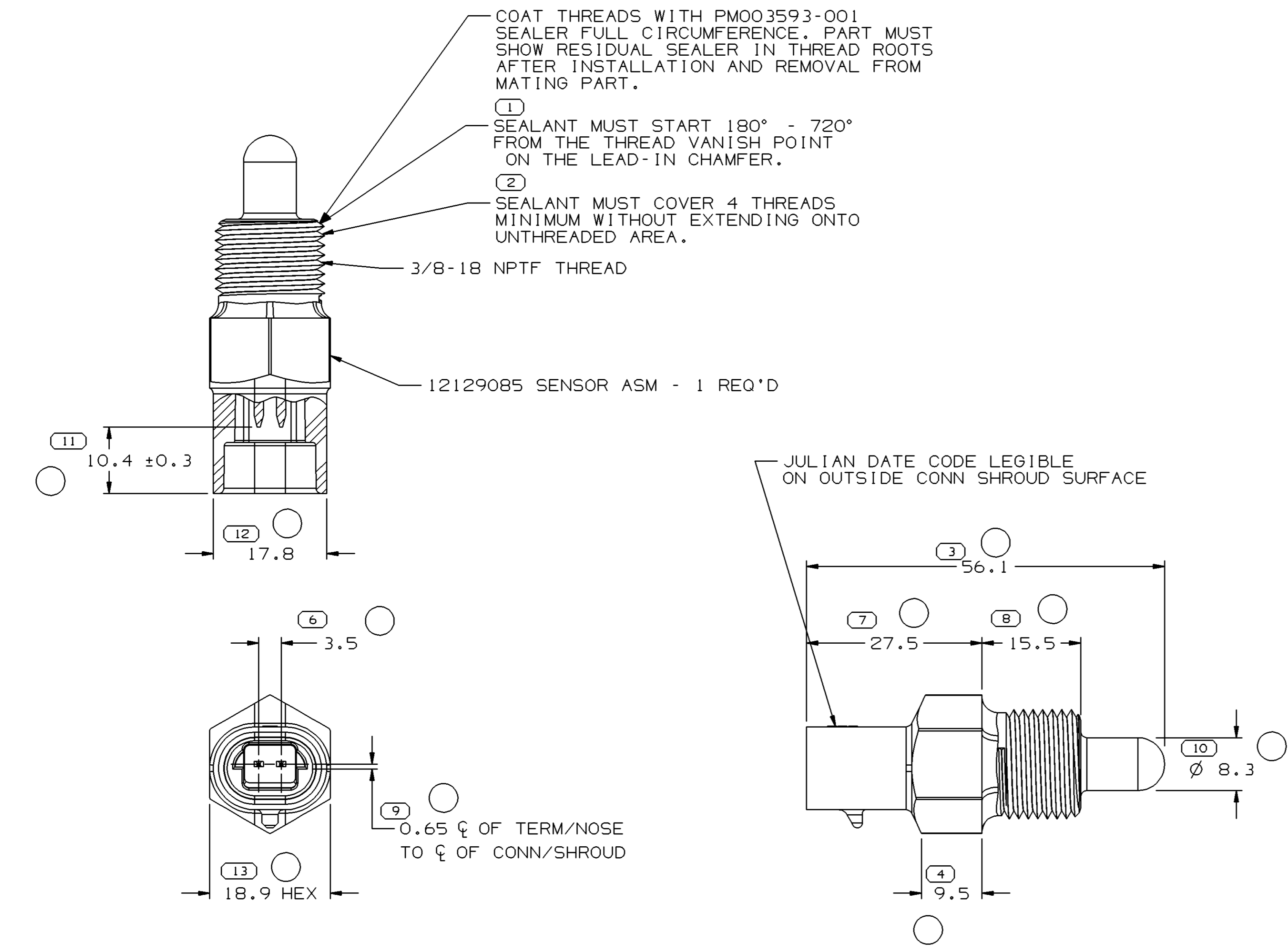


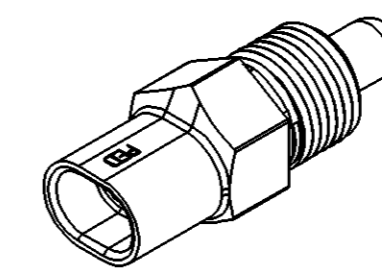
SYMBOL DEFINITION		MISSING NUMBERS	
A DIMENSION WITHOUT AN INSPECTION REPORT SYMBOL  DOES NOT REQUIRE INSPECTION. IT MAY BE CONTROLLED ON AN INDIVIDUAL COMPONENT DRAWING.	TOTAL NO. OF SYMBOLS ON DRAWING	12	5,
	LAST NO. USED	13	

DWG STATUS					ZONE	REVISION HISTORY	AUTH	DR	APVD 1	APVD 2
DATE	STG	REV	N/P	CHG						
20JN00	R	005	-	-		CLEARED REVISION COLUMN - REDRAWN TO UG UPDATED RESISTANCE	200267	JAK	JAK	TE
21FE01	R	005	AA	-		PM003593-001 WAS 9985490 AND REVISED DIM, LABEL & INSPECTION SYMBOLS	205823	EES	KBD	VC
190C01	R	005	AB	-		REVISED NOTE 3	215435	EES	EES	VC
18JA02	R	005	AC	-		REVISED NOTE 3	219536	FRG	FRG	TE
140C02	R	05	AD	-		REVISED DATE NOTE STAMP; UPDATED FORMATS	231699	DAD	DAD	RED
22MR05	R	05	AE	-		REVISED TOLERANCES (10 PLCS) AND REMOVED DIMENSION 5	265600	GPS	FKV	RLA



NOTES

- UNLESS OTHERWISE SPECIFIED AND/OR INDICATED: DIMENSIONS ARE TO FACE OF VIEW SHOWN AND AUTOMATICALLY ROUNDED BY COMPUTER FOR INSPECTION (SEE MATH MODEL FOR PRECISE DIMENSIONS). FOR ALL OTHER DIMENSIONS NOT SHOWN BUT REQUIRED FOR TOOL BUILD, SEE MATH MODEL FOR PRECISE TOOL PATH DATA.
- SEALING CODE 3 - DESIGN WILL PASS SALT FOG AND IMMERSION TEST AFTER CONDITIONING AS SPECIFIED IN ESA-644 (WEATHER-PACK), ESA-710 (METRI-PACK), ESA-650 (UNDERHOOD MICRO-PACK), C-4006 (WORLD CONNECTOR), ETC WHEN MATED TO MATING PART OR EQUIVALENT
- MATING COMPONENT - 15359366 CONN ASM OR EQUIVALENT
- SENSOR MUST BE HAND STARTED INTO MATING THREADED HOLE (3/8-18 NPTF OR NPSF).
- INSTALLATION TORQUE: 10.8-16.3 N m DYNAMIC (8-12 FT LB)
- MAX INSTALLATION SPEED USING A PNEUMATIC DRIVER: 400 RPM NO LOAD SPEED



128	81.65±2.9Ω REF
TEMPERATURE °C	NO LOAD RESISTANCE (OHMS)

DIMENSIONAL RANGE (MM)		CHART E1	
FROM	TO	TOLERANCE UNLESS OTHERWISE SPECIFIED	ANGULAR TOLERANCE ±2°
> 0	> 20	±0.15	
> 20	> 30	±0.2	
> 30	> 70	±0.3	
> 70	> 100	±0.4	
> 100	> 150	±0.5	
> 150	> 200	±0.6	
> 200	> 250	±0.8	
> 250	> 300	±1	
> 300	> 400	±1.2	

DWG TYPE PART DRAWING	
STYLE	
VOLUME (CM³)	DISTR CODE D
UNLESS OTHERWISE SPECIFIED THIS DOCUMENT IS IN ACCORDANCE WITH ASME Y14.5M-1994 AS AMENDED BY THE GM GLOBAL DIMENSIONING AND TOLERANCING ADDENDUM - 1997. ALL GEOMETRIC TOLERANCES AND RELATED DATUMS APPLY RFS. RULE #1 PERFECT FORM AT MMC DOES NOT APPLY WHEN RELATIONSHIP BETWEEN FEATURES IS ESTABLISHED BY ORIENTATION OR LOCATION TOLERANCES. SEPARATE POSITION CALLOUTS MAY BE GAGED SEPARATELY, REGARDLESS OF DATUM REFERENCE. ALL DIMENSIONS ARE IN MILLIMETERS	
THIRD ANGLE PROJECTION	
DO NOT SCALE	USE MATH DATA

DELPHI
DELPHI PACKARD ELECTRIC SYSTEMS
WARREN, OH

DR	DATE
APVD1 P. SOLANO	20JN90
APVD2 JEFF HESTON	07AU90
APVD3 JEFF HESTON	20N090
APVD4 D. URBANIA	20N090
APVD5	

SUBSTANCES OF CONCERN AND RECYCLED CONTENT PER DELPHI 10949001

MATERIAL SEE DRAWING

DRAWING NAME
ASM CONN 2 M M/P 150 BLK SENSOR

DRAWING NUMBER
12110446

SIZE A1	SCALE 2:1	FRAME NO 1 OF 1	SHEET NO 1 OF 1	STG R	REV 05	N/P AE
------------	--------------	--------------------	--------------------	----------	-----------	-----------