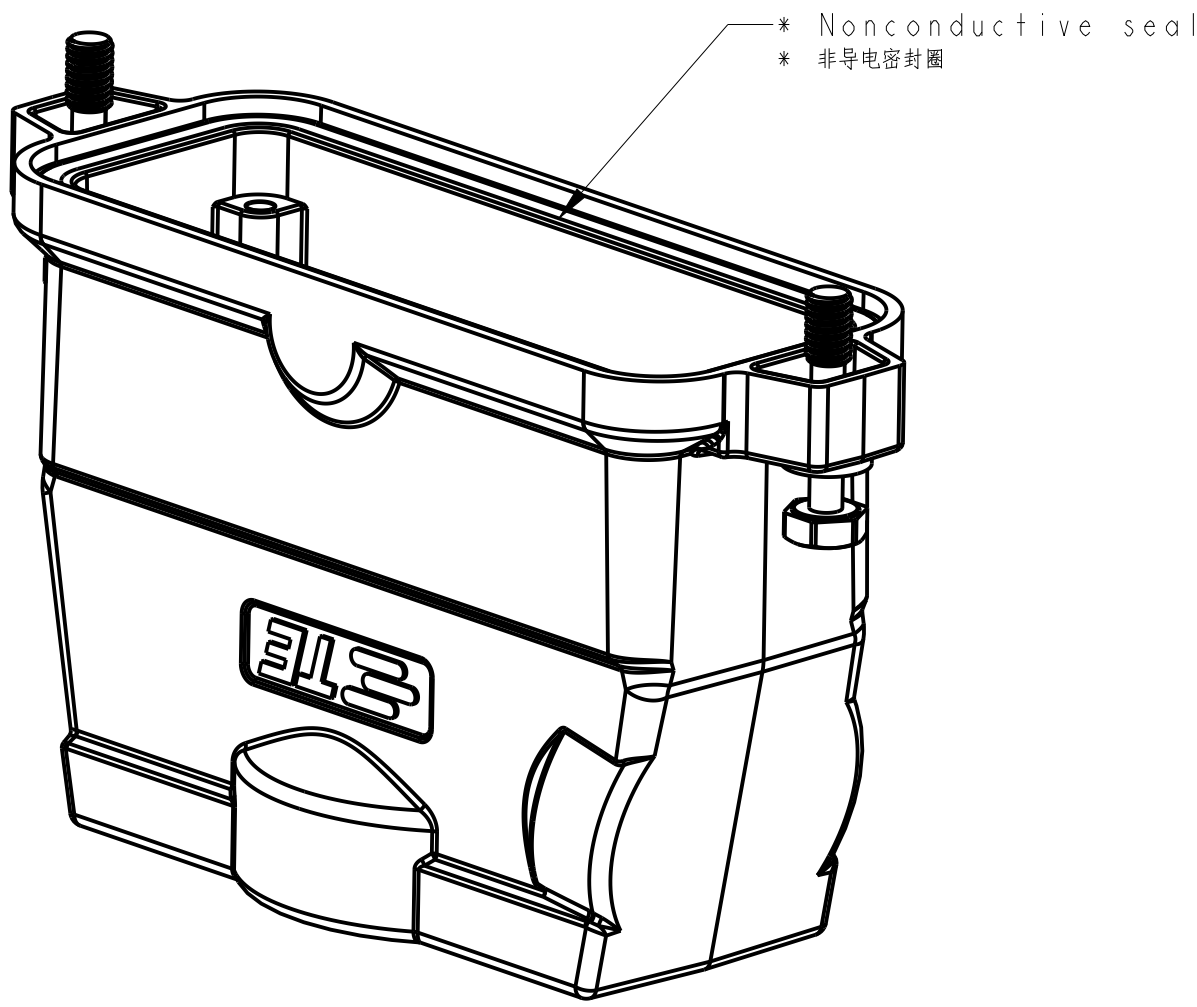
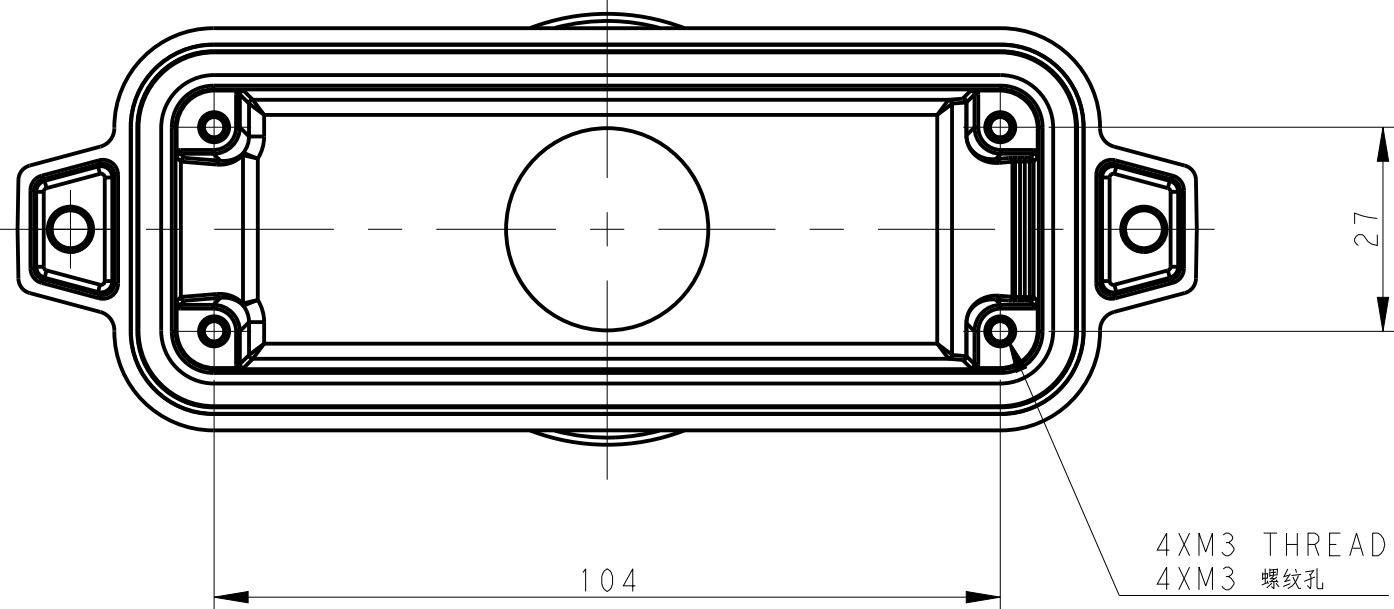
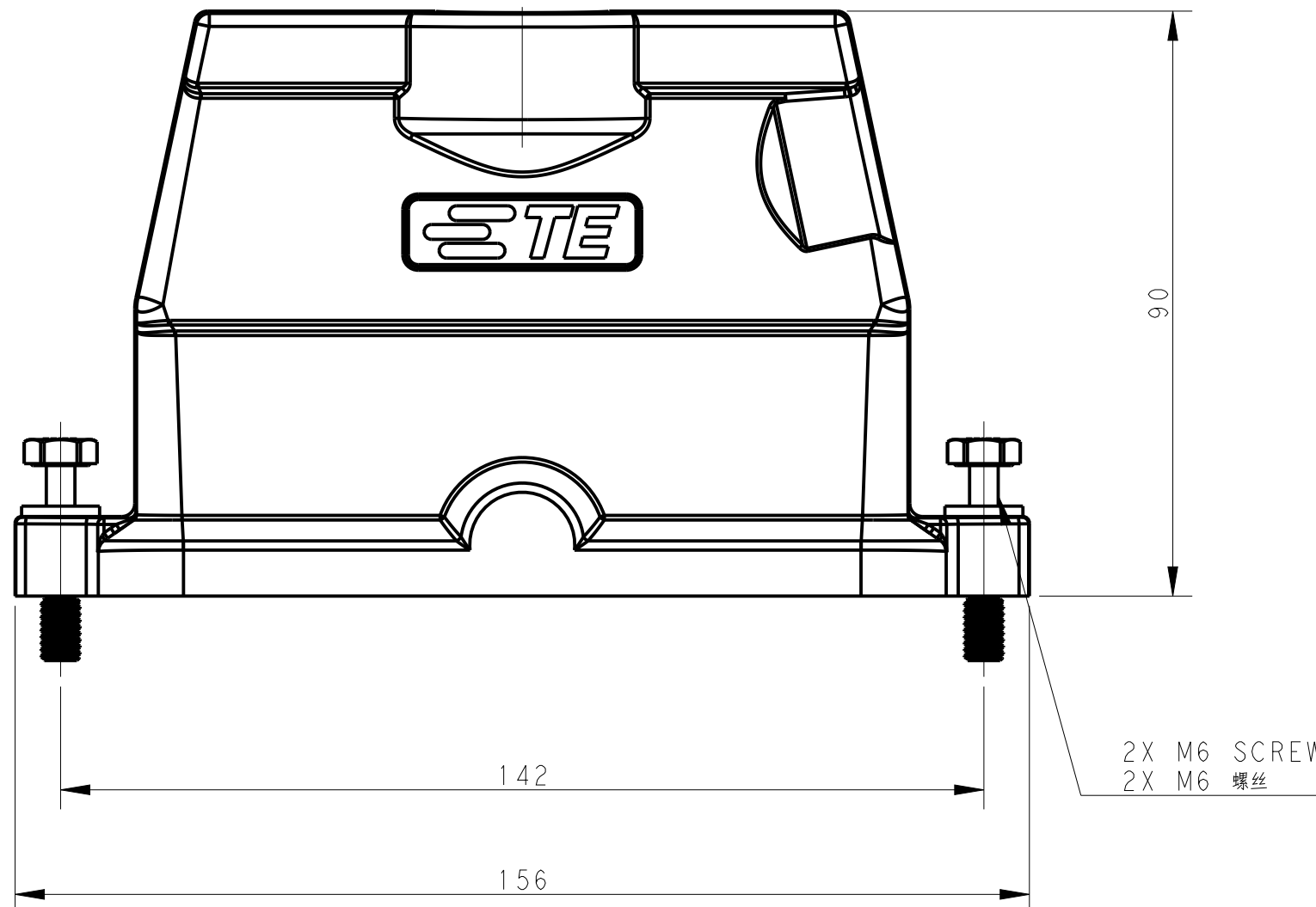
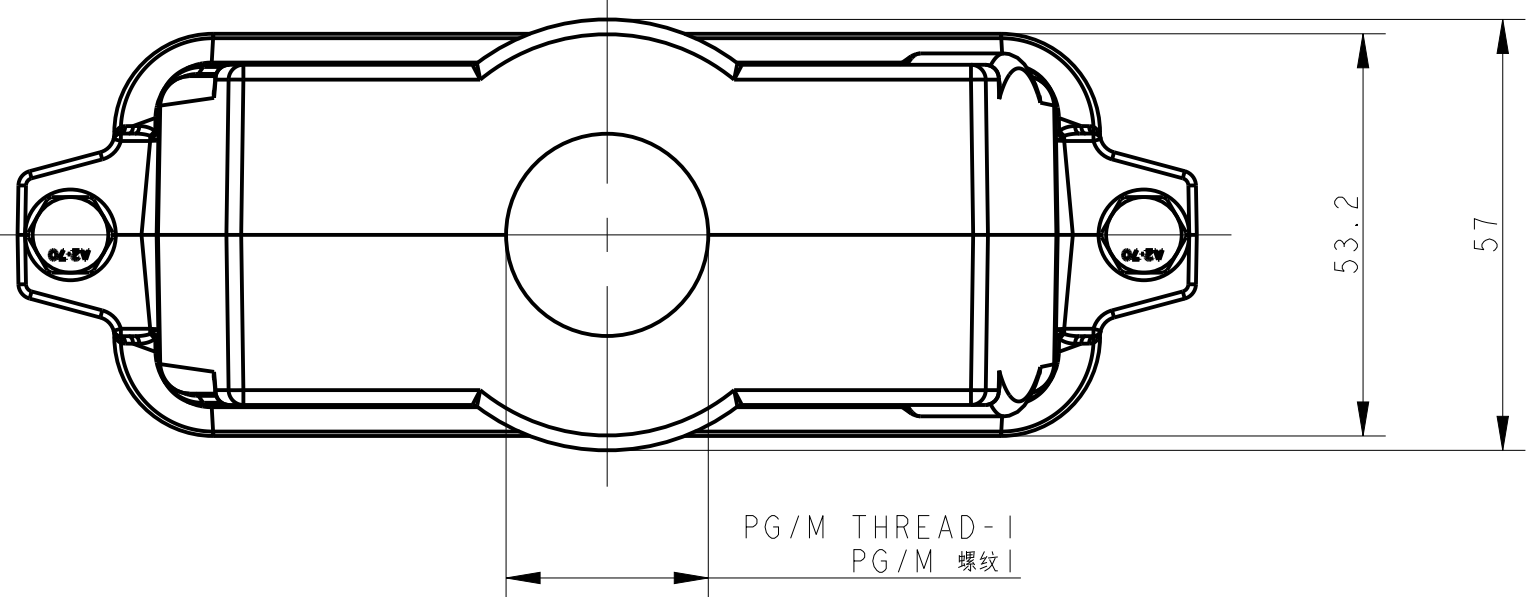


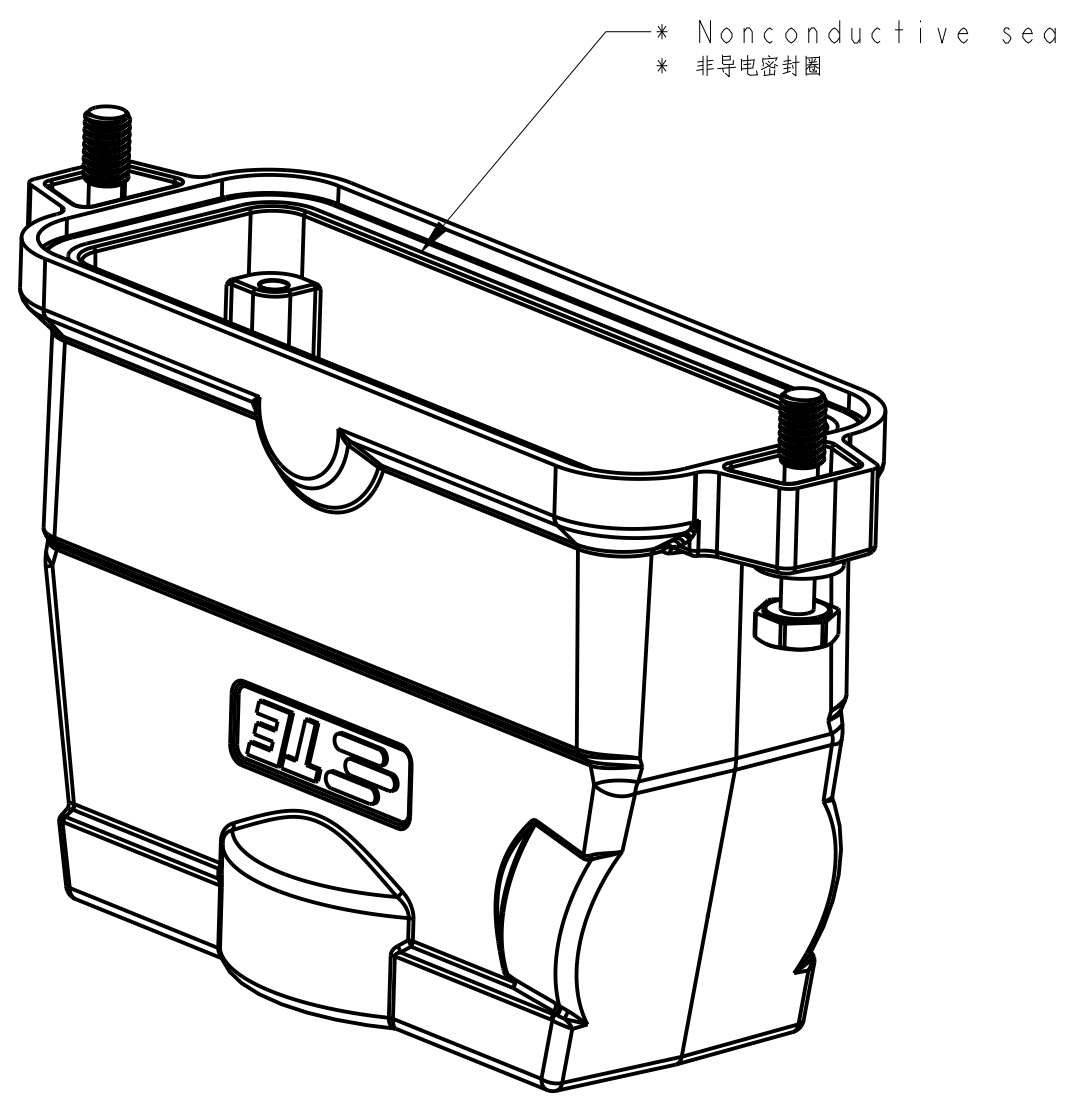
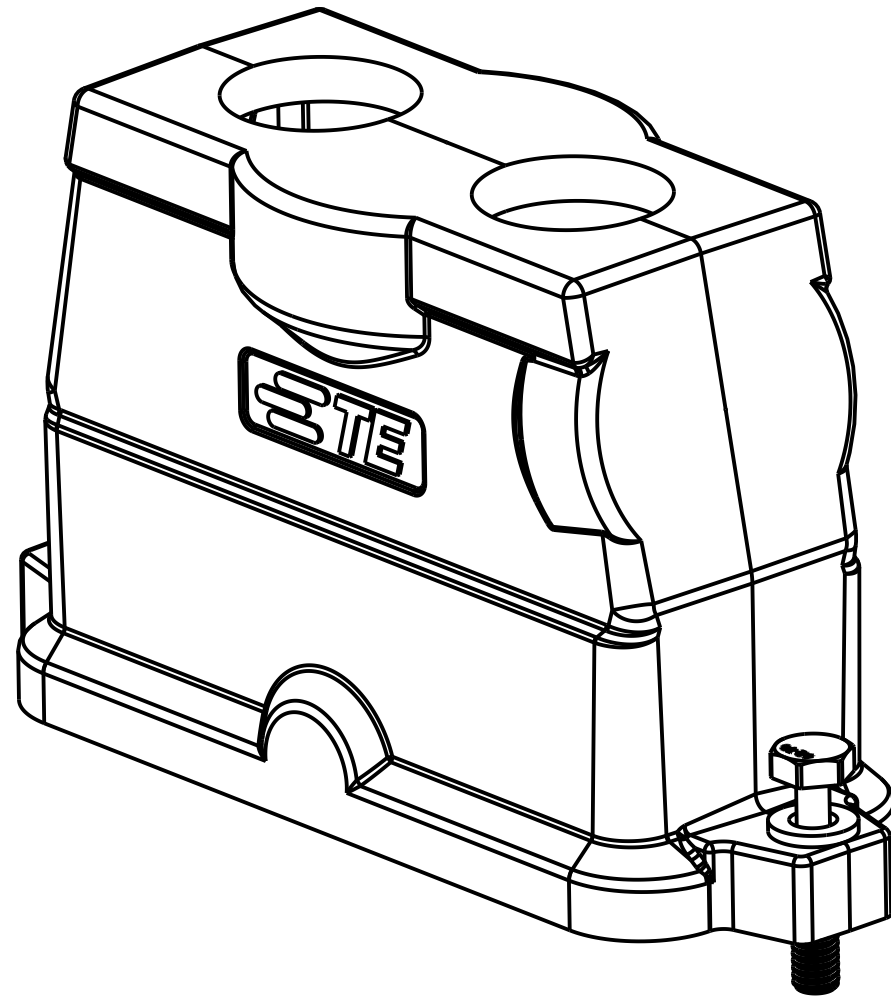
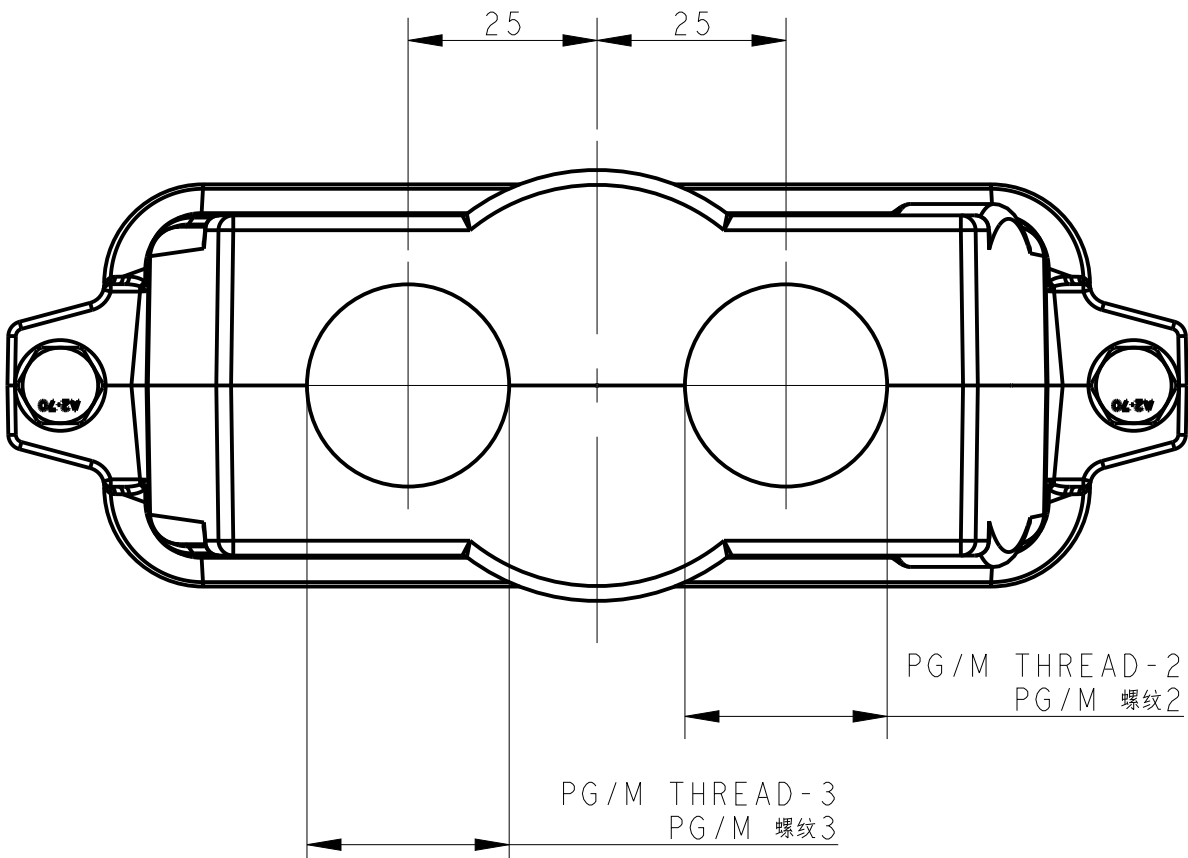
TYPE 1  
类型 1

Single PG/M thread & With nonconductive seal  
单个PG/M螺纹孔与带非导电密封圈



TYPE 2  
类型 2

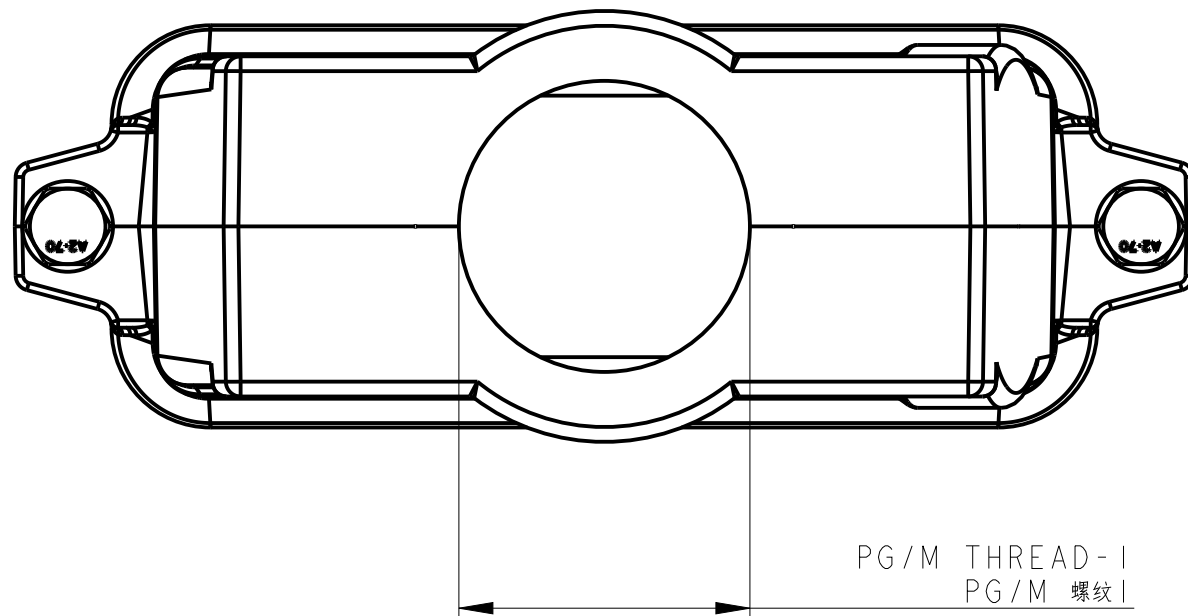
Two PG/M threads & With nonconductive seal  
两个PG/M螺纹孔与带非导电密封圈



All dimension is same as TYPE 1, except those defined in this TYPE  
除了在本类型中定义的尺寸外, 其他尺寸同类型 1

TYPE 4  
类型 4

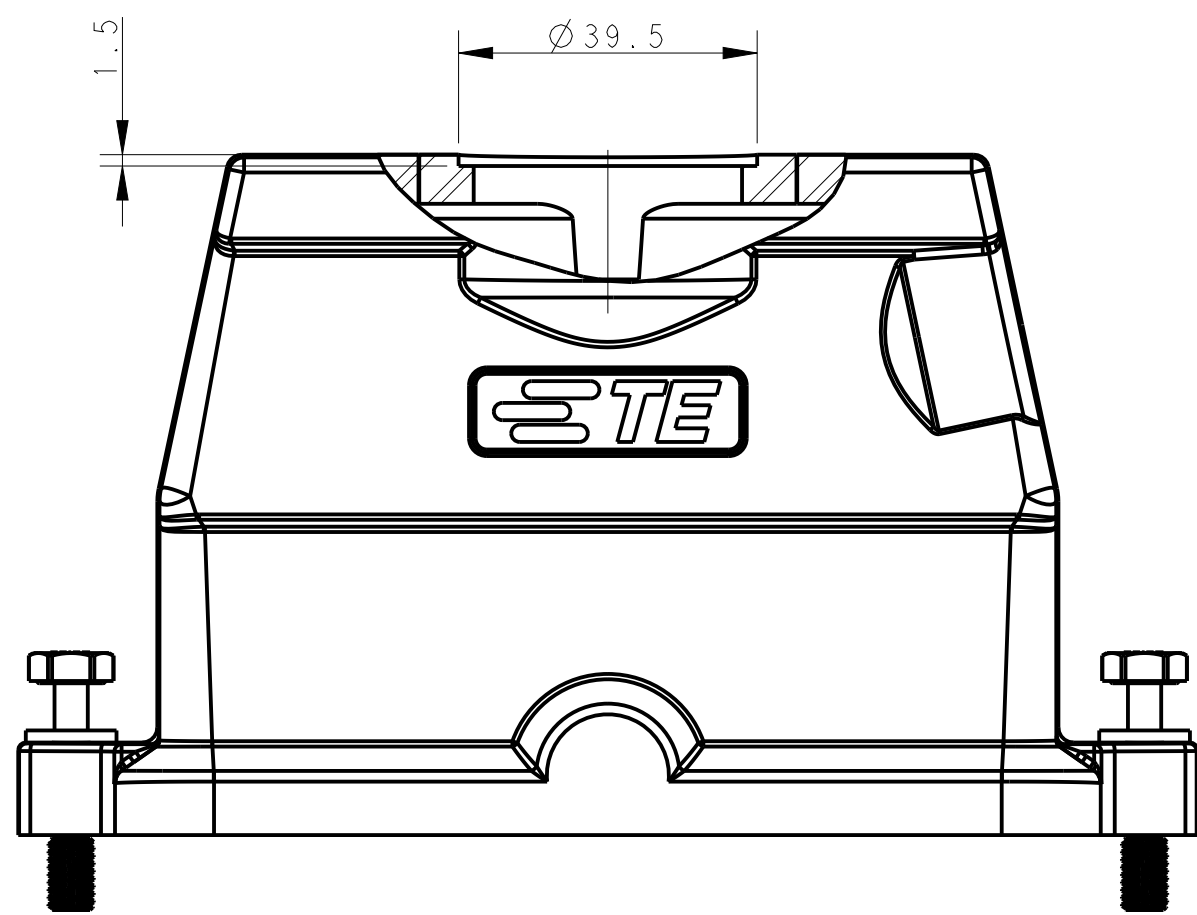
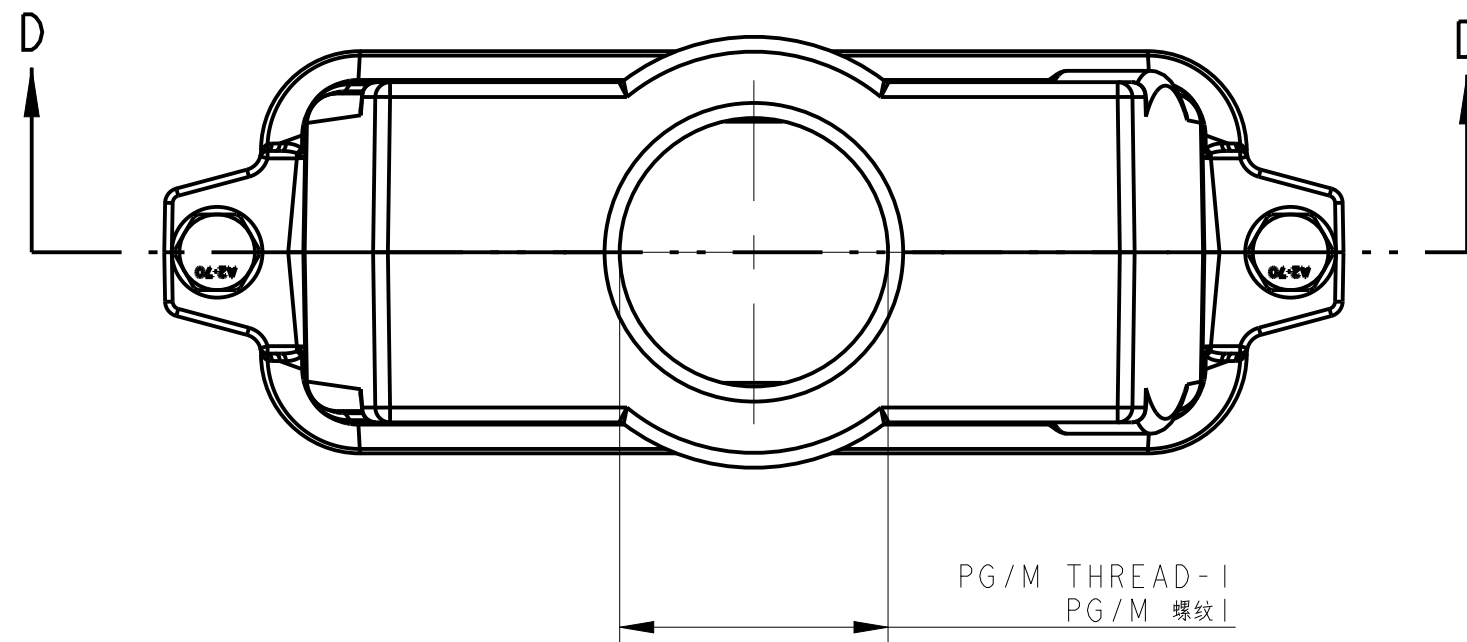
Single PG/M thread & With nonconductive seal, No logo  
单个PG/M螺纹孔与带非导电密封圈, 无Logo



All dimension is same as TYPE 1, except those defined in this TYPE  
除了在本类型中定义的尺寸外, 其他尺寸同类型 1

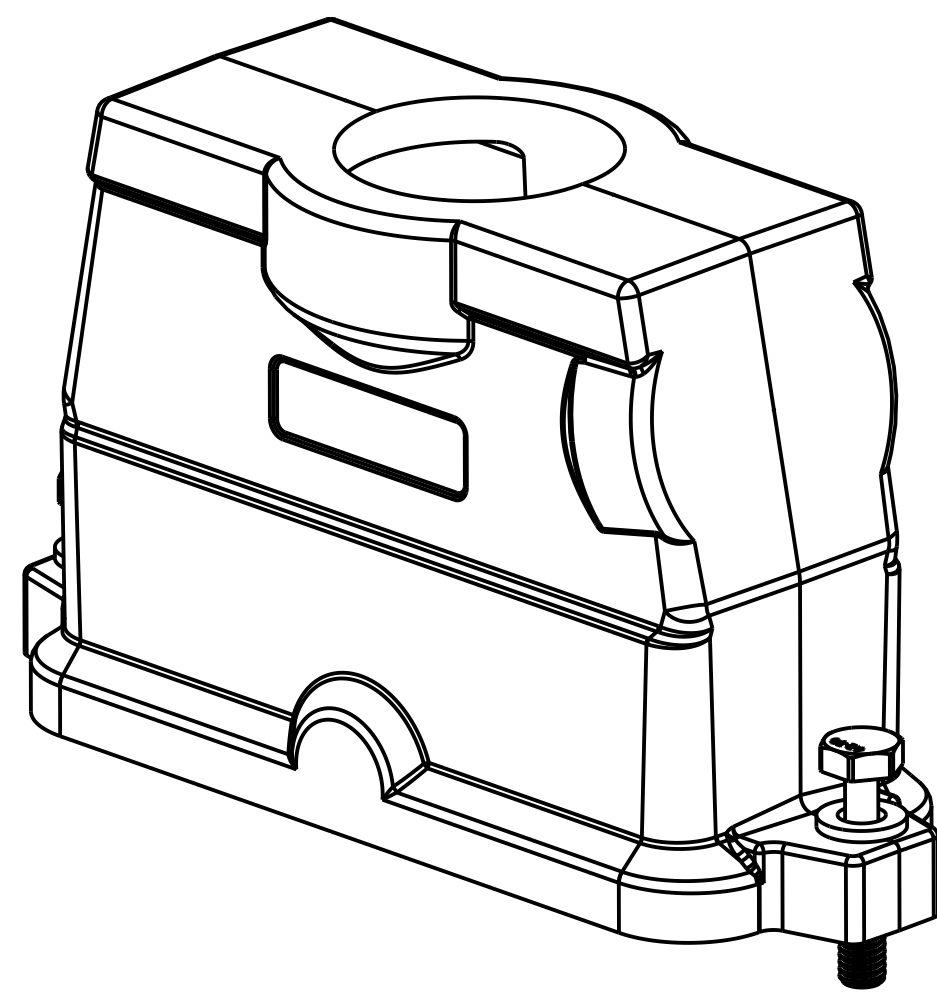
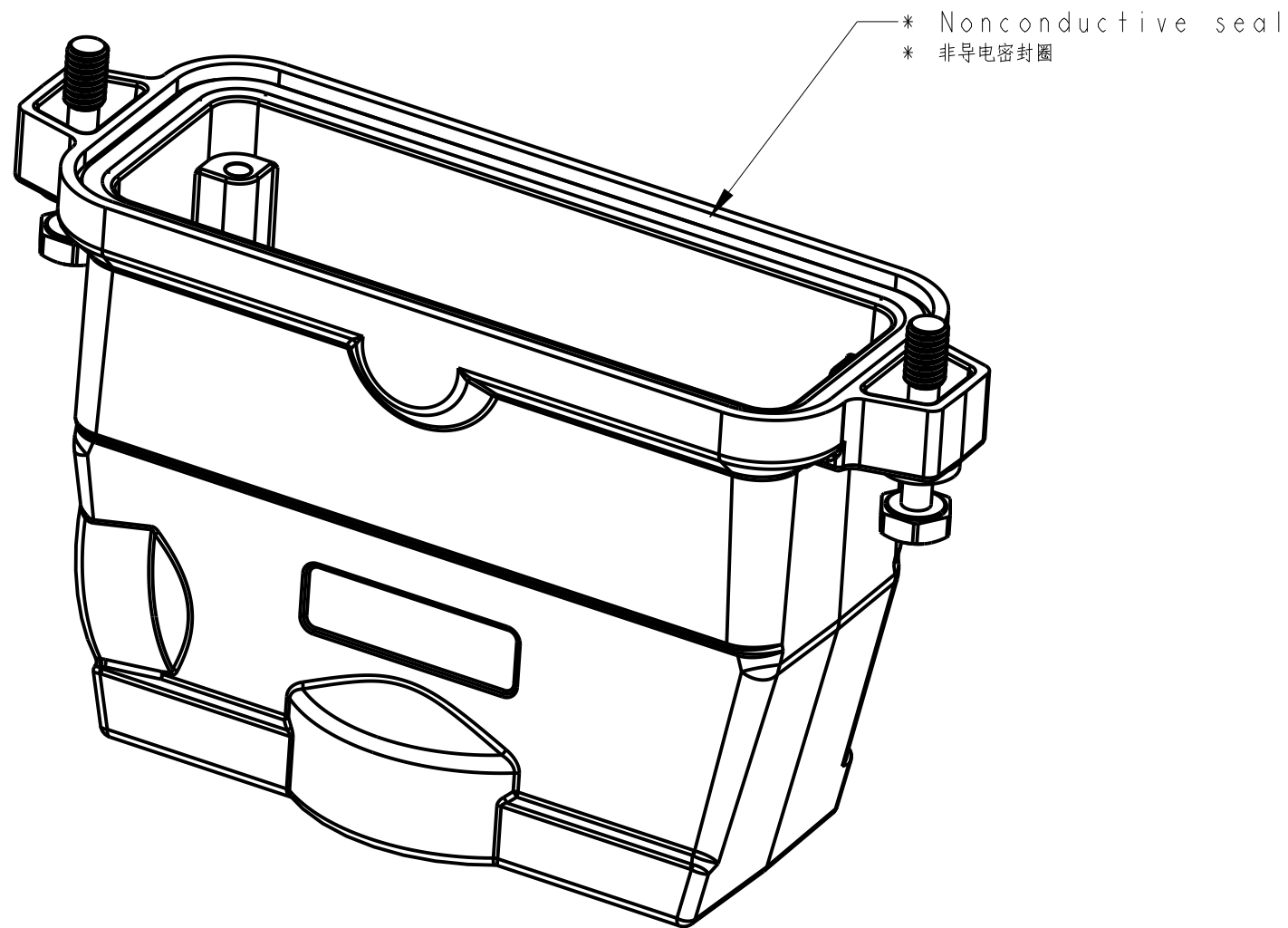
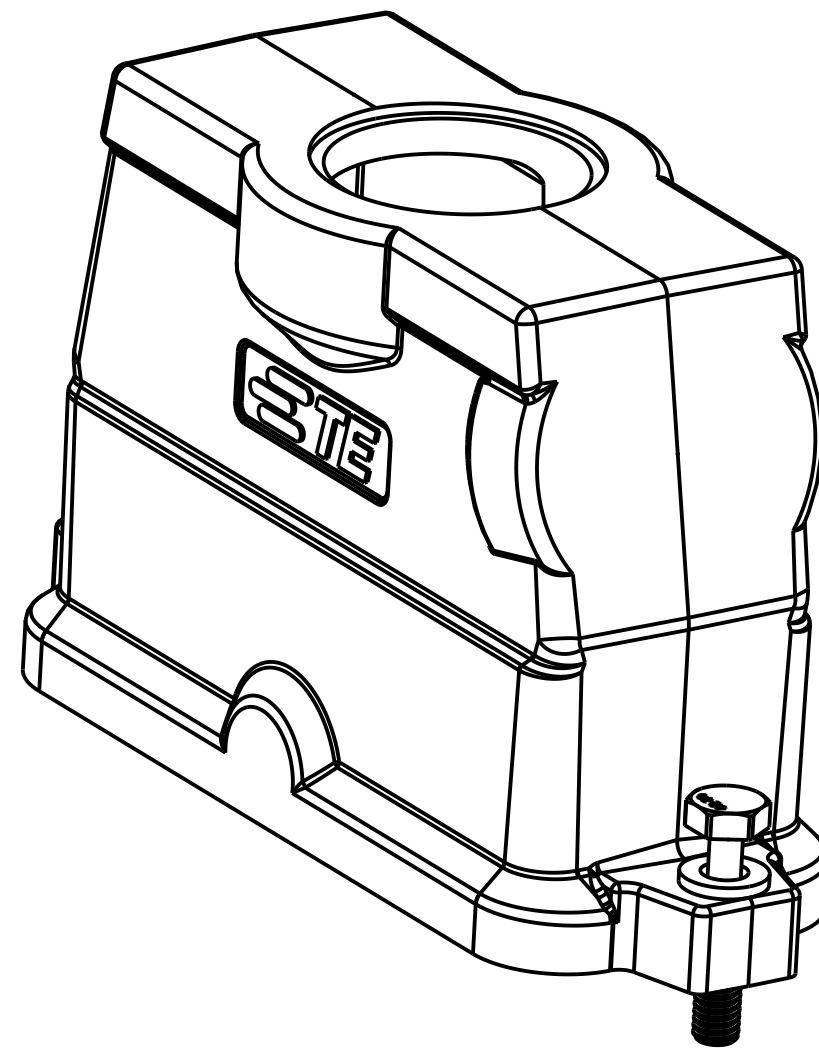
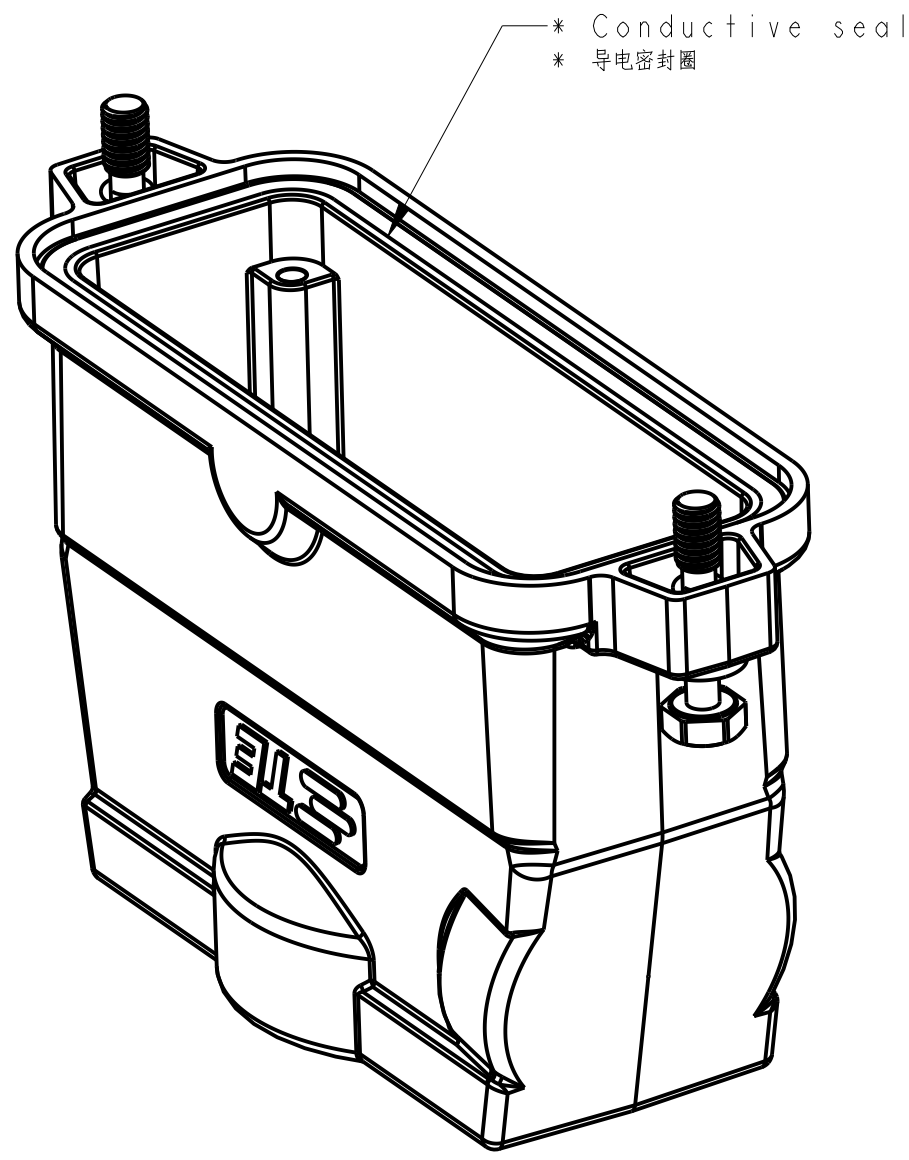
TYPE 3  
类型 3

Single PG/M thread & With conductive seal  
单个PG/M螺纹孔与带导电密封圈



All dimension is same as TYPE 1, except those defined in this TYPE  
除了在本类型中定义的尺寸外, 其他尺寸同类型 1

REVISIONS				
REV	LTN	DESCRIPTION	DATE	OWN APPO
B3		ECR-18-009564,	25SEP2018	CD CW
B4		ECR-18-017123	25DEC2018	KW CW
B5		ECR-19-006656	05NOV2019	CD CW
B6		ECR-19-007133	20NOV2019	BS CW



THIS DRAWING IS A CONTROLLED DOCUMENT.				REV: 0180_300	16 JUN 2015	TE Connectivity	
DIMENSIONS: (mm)				CHK: C.H.C.I.S. WONG	16 JUN 2015		
QUANTITIES: (PCS)				APPRO: Y. LANG YU	16 JUN 2015	NAME: H24BPR-TGHC-PG/M	
0 PLC				PRODUCT SPEC		SIZE: A0	
2 PLC				108-137014		CASE CODE: C	
3 PLC				APPLICATION SPEC		DRAWING NO: T192224XXXX00	
4 PLC				114-137014		SHEET 1 OF 2	
MATERIAL: -				WEIGHT: -		RESTRICTED TO: REL B6	
FINISH: -				CUSTOMER DRAWING		SCALE: 1:1	

