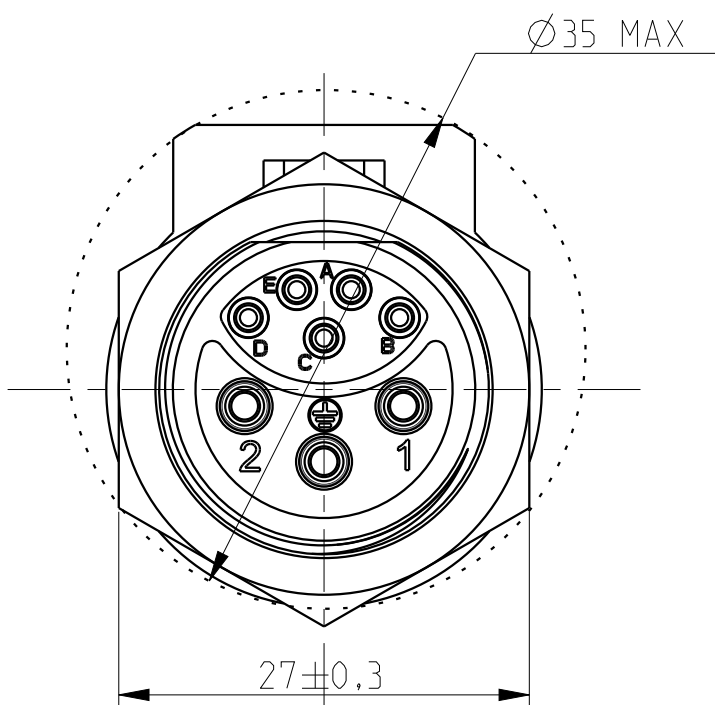
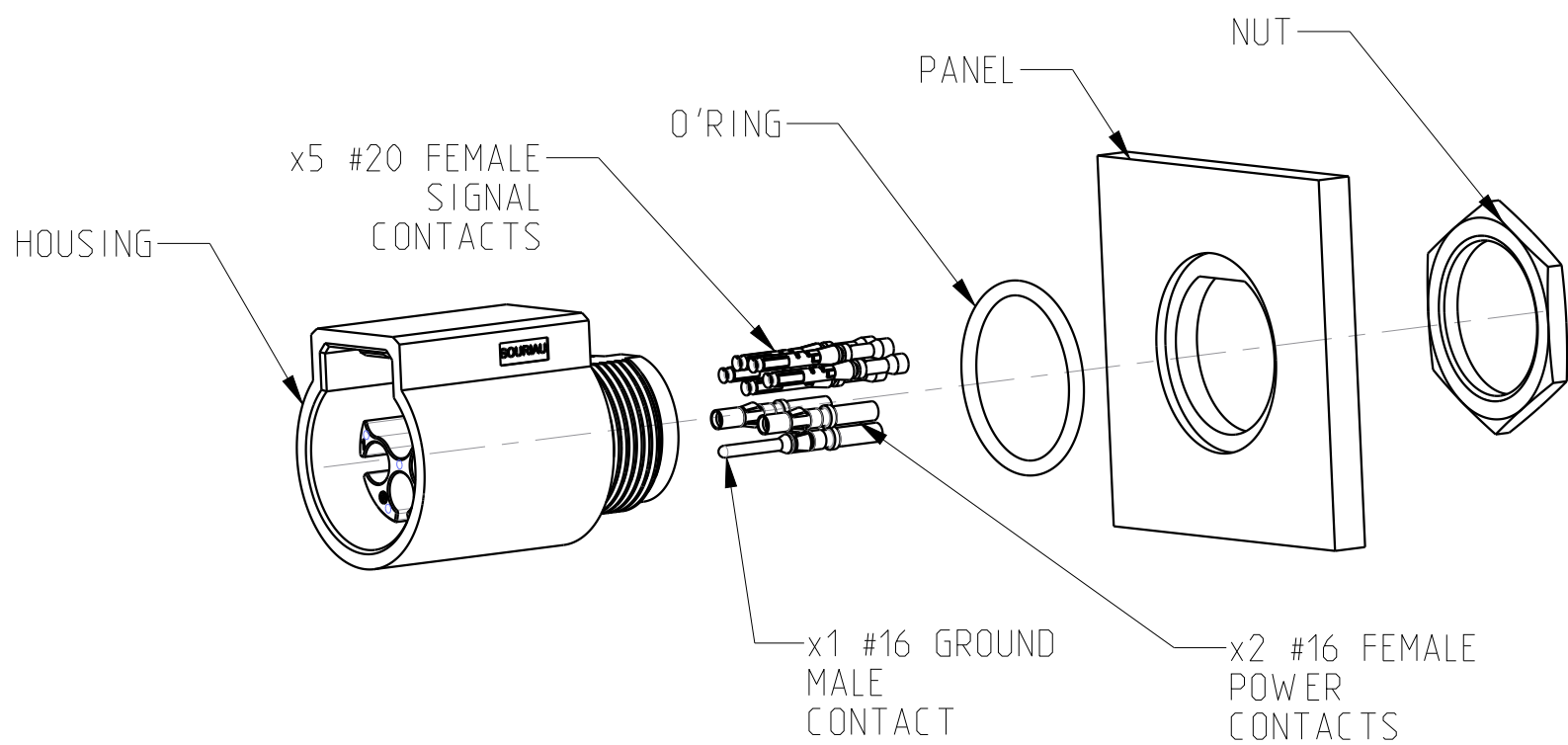
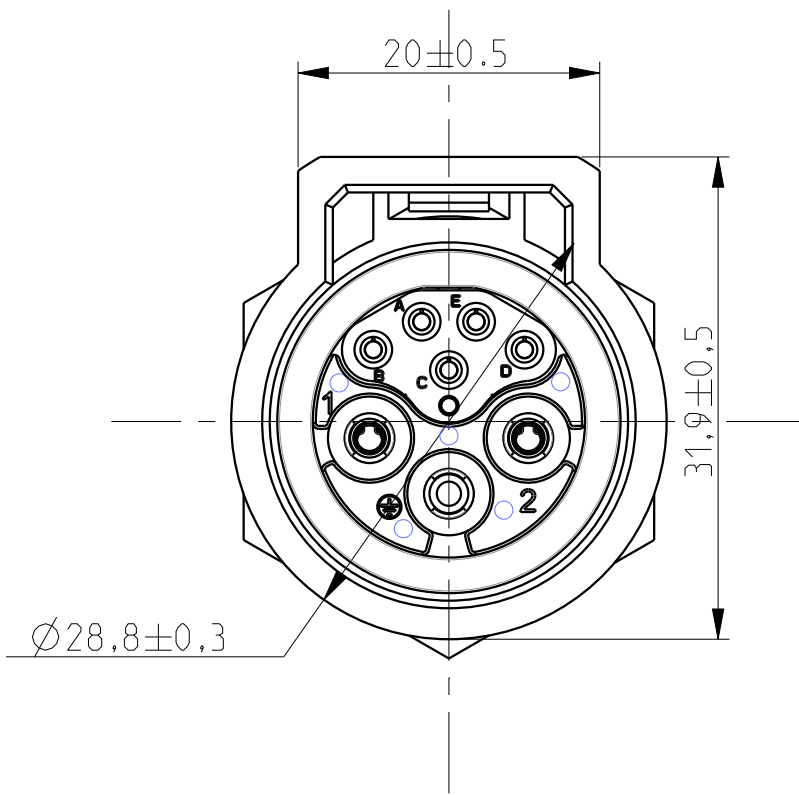


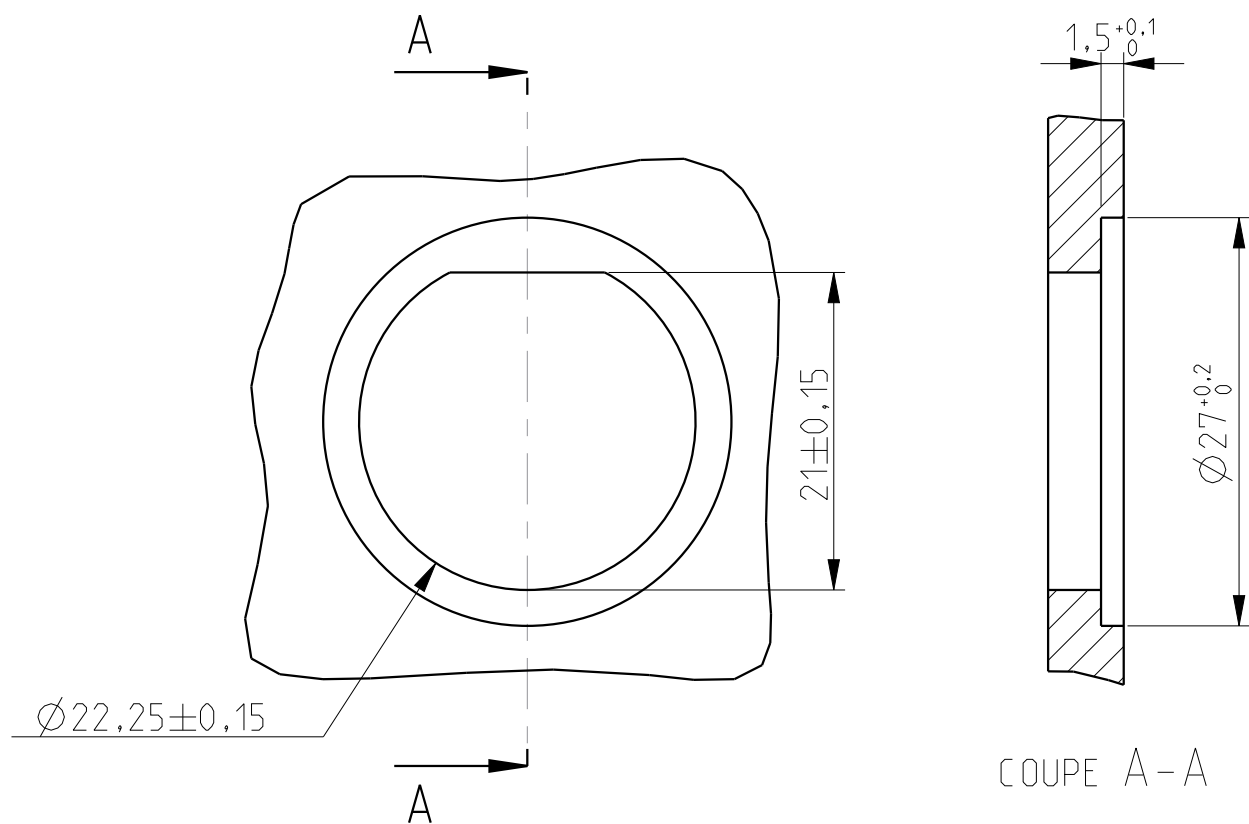
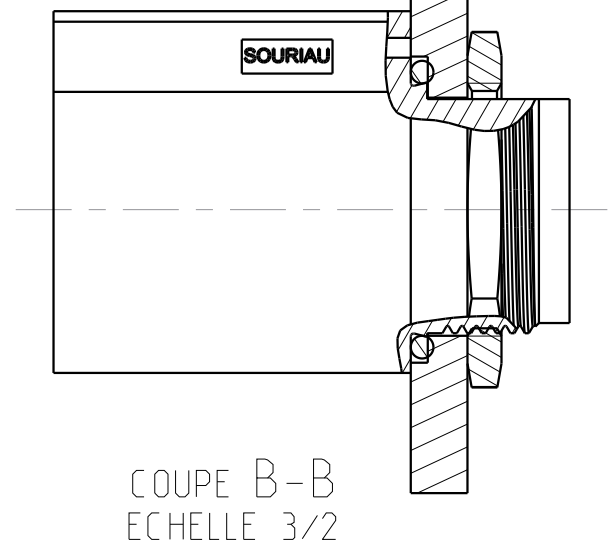
WIRING FACE



MATING FACE



PANEL THICKNESS
6mm MAX



MASS ± 5%

24.87 g

MATERIALS

HOUSING PA GF REINFORCED, BLACK COLOR
O'RING NEOPREN
NUT ALUMINIUM ALLOY BLACK ANODIZED

PERFORMANCES CHARACTERISTICS

MECHANICAL

TEMPERATURE CLASS IEC61984/UL1977 -40°C TO 105°C
DURABILITY IEC61984 500 MATE / UNMATE CYCLES
SEALING IN MATED CONDITION IEC60529 IP68 1BAR DURING 1WEEK
DIN40050 IP69K
SEALING IN UNMATED CONDITIONS IEC60529 IP67 WITH CAPS
POLLUTION DEGREE IEC61984 4
CORROSION SALT SPRAY MIN 1000H
FLAMMABILITY UL94 MATERIAL RATING: 5VA
OUTDOOR SUITABILITY (UV RESIST) UL746C MATERIAL RATING: (f1)
SCOOP PROOF

ELECTRICAL

TOUCH PROOF IEC60529 IP2X

POWER AND GROUND LINES

NOMINAL CURRENT UL1977 16A WITH AWG14 WIRE / 13A WITH AWG16 WIRE
NOMINAL CURRENT IEC61984 16A WITH 2.5MM² WIRE / 13A WITH 1.5MM² WIRE AT 60°C

NOMINAL VOLTAGE

NOMINAL VOLTAGE UL1977 600V
IEC61984 250VAC 4KV 4 FOR CLASS II
IEC61984 500VAC 6KV 4 FOR CLASS I

SIGNAL CONTAC (a,b,c,d,e) LINES:

NOMINAL VOLTAGE IEC61984 48V AC
NOMINAL CURRENT IEC61984 5A

ROHS COMPLIANT

NOTES

- COUNTERPART REFERENCE UTL PLUG
- CONNECTORS ARE DELIVERED AS PRE-ASSEMBLED KIT
- CONNECTOR BLOCKS ACCEPTS TRIM TRIO CONTACTS #16 AND #20, R*M* OR S*M* TYPES
- CONTACTS TO BE ORDERED SEPARATELY.
- WARNING: PHASE AND SIGNAL CONTACTS ARE FEMALE VERSION AND GROUND CONTACT IS MALE VERSION
- UNIT IN MM

Country	Jurisdiction & Control List
FR	NOT LISTED

P/N : UTL7122G1W5S

B	06/11/15	drawing format updated	--
ISS	DATE	Latest modification - by: LANDAIS.PE	MOD N°
Designed by:	RAGAIN.M	Date:02/10/14	CUSTOMER DRAWING
TITLE	FEMALE NUT RECEPTACLE SIZE 12 LAYOUT 8 CONTACTS UTL CONNECTOR		
Scale	1/1	General Linear Tolerances: ± --	NPRDS / PROJECT UTL
SOURIAU		WWW.SOURIAU.COM	This document is the property of SOURIAU It must not be reproduced or communicated without permission
FORMAT	A2	SOURIAU DRG N° UTL1-0065A-C01	SHEET 1 / 1