

THE DRAWING SHOWS THE 2-DIMENSIONAL REFERENCE COMPONENT CONDITION OF THE ASSEMBLY TO IDENTIFY AND SPECIFY THE NECESSARY DIMENSIONS ONLY. THE DELIVERED PARTS MAY DEVIATE FROM THE DRAWING REGARDING THE ORIENTATION AND POSITION OF EACH COMPONENT (e.g. SLACK CABLE), SO FAR THE FUNCTIONALITY IS NOT CONCERNED.

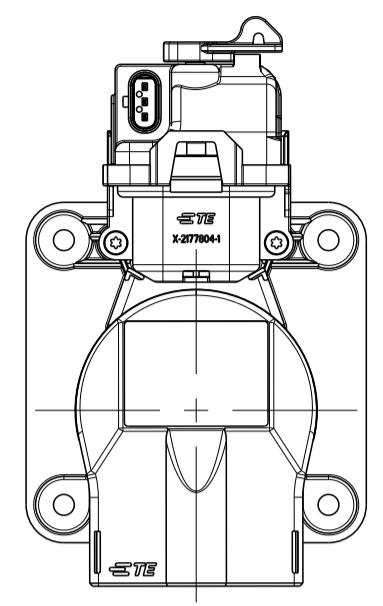
DIE ZEICHNUNG ZEIGT DEN 2-DIMENSIONAL IDEALZUSTAND DES ZUSAMMENBAUTEILS BEZÜGLICH DER KOMPONENTEN ZUR IDENTIFIKATION UND SPEZIFIKATION DER NOTWENDIGEN DIMENSIONEN. HINSICHTLICH DER ORIENTIERUNG UND DER LAGE DER KOMPONENTEN (Z.B. BIEGESCHLAFES KABEL) KÖNNEN DIE GELIEFERTEN TEILE VON DER ZEICHNUNG ABWEICHEN, SOFERN DIE FUNKTIONALITÄT NICHT BEEINTRÄCHTIGT IST.

PROJEKT NR.:  
 PRJ-13-00000363

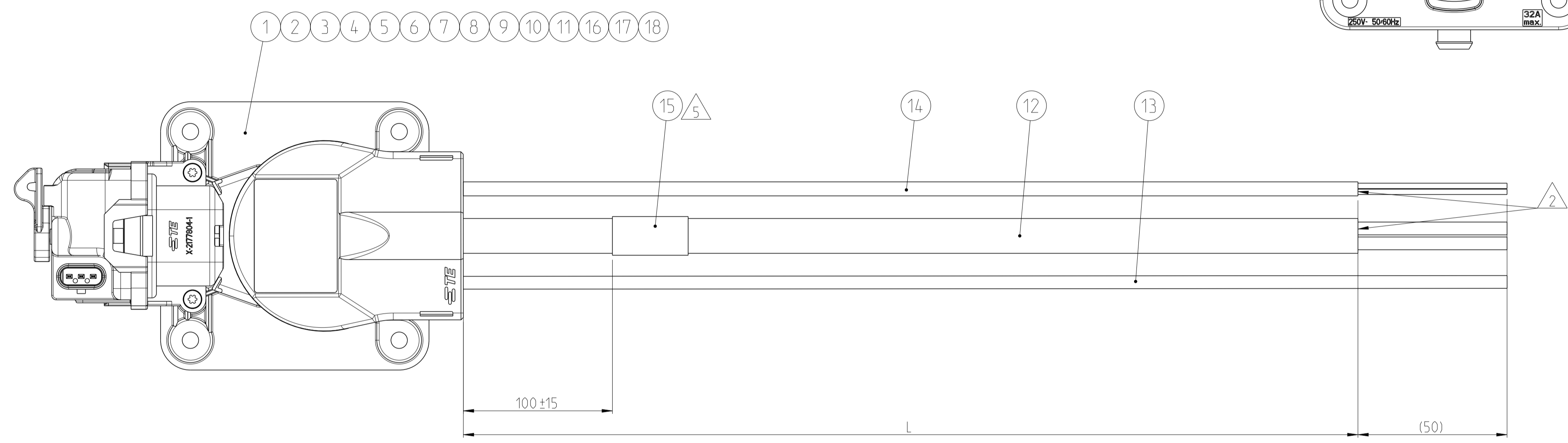
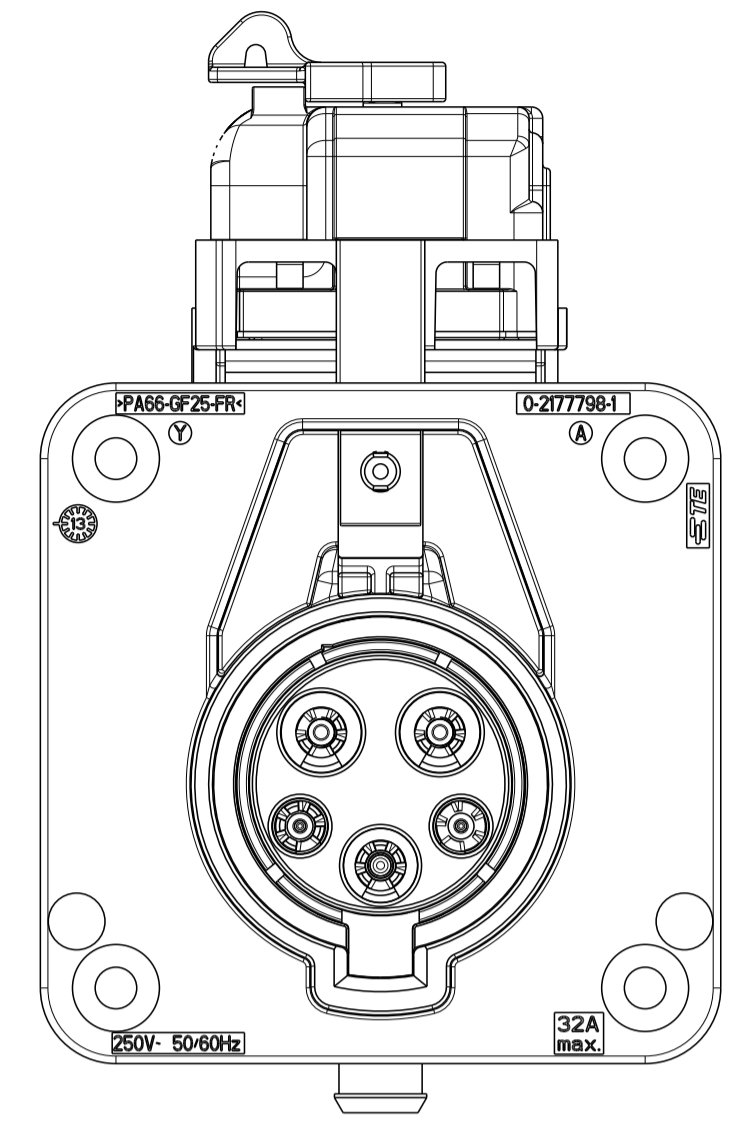
REVISIONS		ÄNDERUNGEN		
REV.	DESCRIPTION	DATE	BY	APPV
F	NOTES UPDATED, COMPONENT REVISED	14 JUN 2016	JM	JJ
G	COMPONENT (CABLE, 2 x 0.75 mm <sup>2</sup> ) REVISED	27 NOV 2018	JM	JJ

CABLE OUTLET POSITION 3

1:2



INTERFACE VIEW  
 Schnittstellen Ansicht



LENGTH SCHEDULE:  
 Laengentabelle:

TE PART NO.	REV.	LENGTH L (mm)	TOL.	CABLE OUTLET POSITION
2-2208876-1	G	1000	+30	Position 3
2-2208876-5	G	5000	+60	

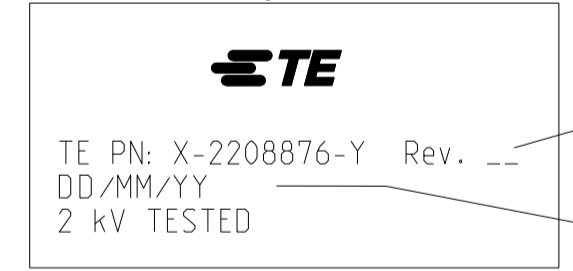
NOTES

- 1 PACKAGING ACCORDING SPECIFICATION V2208876.
- △ STRIPPED ONLY OUTER JACKET AND BRAID. ELECTRICAL TESTING IS ACCORDING APPLICATION SPECIFICATION.
- 3 APPLICATION SPECIFICATION: 114-94163-1 CHARGE INLET IEC 62196-2 TYPE 1.
- 4 CUTTING LENGTHS TO BE FIXED BY MANUFACTURING.
- △ 5 MANUFACTURING CODE: TE PART NO., CURRENT REV. LEVEL AND DATE CODE (DD.MM.YY). TO BE PRINTED ON LABEL (ITEM 15). LABEL TO BE APPLIED TO THE CABLE AFTER SUCCESSFUL ELECTRICAL TEST.

WIRING SCHEDULE:  
 Belegungsplan:

CAVITY-NO.	IDENTIFICATION	WIRE COLOUR	WIRE SECTION
1	L1	RED	6mm <sup>2</sup> (ITEM 12)
2	L2/N	BROWN	6mm <sup>2</sup> (ITEM 12)
3	GROUND/EARTH	BROWN	6mm <sup>2</sup> (ITEM 13)
4	CP	BROWN/WHITE	0.75mm <sup>2</sup> (ITEM 14)
5	CS	WHITE	0.75mm <sup>2</sup> (ITEM 14)

△ 5 LABEL LEGEND:  
 Label Beschriftung:



TE PART NO., CURRENT REVISION  
 TE Teilenummer, aktuelle Revision

PRODUCTION DATE  
 Produktionsdatum

1	RESISTOR, 2K7, 1%	18
2	CONTACT KIT, R5, INLET TYPE 1, PLATED	17
3	CAB TIE, CLIP, HELL, T18R-HR-N46	16
1	LABEL, HELL	15
SPP table	CABLE, 2 x 0.75 mm <sup>2</sup> , BLACK	14
SPP table	CABLE, 6 mm <sup>2</sup> , BROWN	13
SPP table	CABLE 2 x 6.0 mm <sup>2</sup> , BRAID	12
5	O-RING, 3 x 1.5	11
2	PIN DIA 1.5, CP/CS	10
1	PIN DIA 2.8, PE	9
2	PIN DIA 3.6, L/N, ASSY	8
3	SELF TAPPING SCREW	7
2	FAMILY SEAL, MIXED, Vers.1	6
1	INSULATION COVER, TE, COVER INLET	5
1	CABLE FIXATION, TE, COVER INLET	4
1	ACTUATOR, LOCKING UNIT, ASSY	3
1	2. LOCK, TE, IEC62196-2 TYPE 1	2
1	5 POS, MIXED, HSG, IEC62196-2 TYPE 1	1
QTY	DESCRIPTION	ITEM NO.
-	WEIGHT OF ASSY NO. [g]	-

DIMENSIONS: MASSENHEITEN: mm		TOLERANCES UNLESS OTHERWISE SPECIFIED: ALLGEMEINTOLERANZEN	
0 PLC	±	0.10	±
1 PLC	±	0.15	±
2 PLC	±	0.20	±
3 PLC	±	0.30	±
4 PLC	±	0.40	±
5 PLC	±	0.50	±
ANGLES/WINKEL	±		
FINISH/OBERFLÄCHE/FARBE			

PRODUCT CHARACTERISTICS ACC. QMP EMEA_12 BESONDERE MERKMALE NACH QMP EMEA_12		TOLERANCING ISO 8015 TOLERIERUNG ISO 8015	
DIESE ZEICHNUNG IST EIN KONTROLLIERTES DOKUMENT. BEMASSUNGEN UND TOLERANZEN GEMAESS GPS (ISO STANDARDS).			
THIS DRAWING IS A CONTROLLED DOCUMENT. DIMENSIONING AND TOLERANCING PER GPS (ISO STANDARDS)		DWN: M. Zelch CHK: J. Bernstorff APV: M. Folk 28 JUN 2013 01 JUL 2013	NAME: HV, CHARGE INLET TYPE 1, HYB ASSY, 6 sqmm SIZE: A1 CAGE CODE: 00779 DRAWING NO: 2-2208876 RESTRICTED TO: NUR FÜR:
MATERIAL: -		WEIGHT: -	CUSTOMER DRAWING
SCALE: 1:1		SHEET: 1 OF 1	REV: G

2- -X AS SHOWN  
 wie dargestellt

