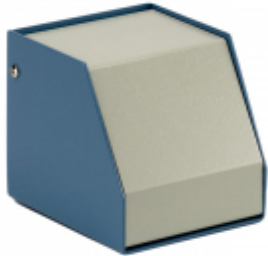




Quality Products. Service Excellence.

Sloped Aluminum Console *SCEM Series*

Key Features:



- Convection ventilation is provided by slots in the bottom and removable rear panels.
- Aluminum case is finished in satin blue with a contempra grey panel.
 - Vented back panel, bottom, and sides are made from 0.081" thick aluminum.
 - Sloped front panel is made from 0.064" aluminum
- Supplied with hardware and rubber feet.
- Replacement screws **1421J8** (Pkg. of 6, 6-32 Philips head screws).

Enclosures

Part Number	Width	Depth	Rear Height
SCEM101110WH	4.00	4.50	4.00
SCEM161110WH	6.50	4.50	4.00
SCEM161414WH	6.50	5.50	5.50
SCEM251414WH	10.00	5.50	5.50
SCEM251619WH	10.00	6.50	7.50
SCEM351619WH	14.00	6.50	7.50



Replacement Screw Pack

Part No.	1421J8
----------	---------------

Data subject to change without notice