

4 to 8GHz 10dB Directional Coupler

FPC06149

COMPLEX • DLI • JOHANSON MFG
NOVACAP • SYFER • VOLTRONICS
www.knowlesc capacitors.com

DESCRIPTION

DLI introduces its new high frequency surface mountable catalog direction couplers. These couplers incorporate DLI's high dielectric ceramic materials which provide small size and minimal performance variation over temperature. The components are well matched for monitoring incident and reflected power.

FEATURES

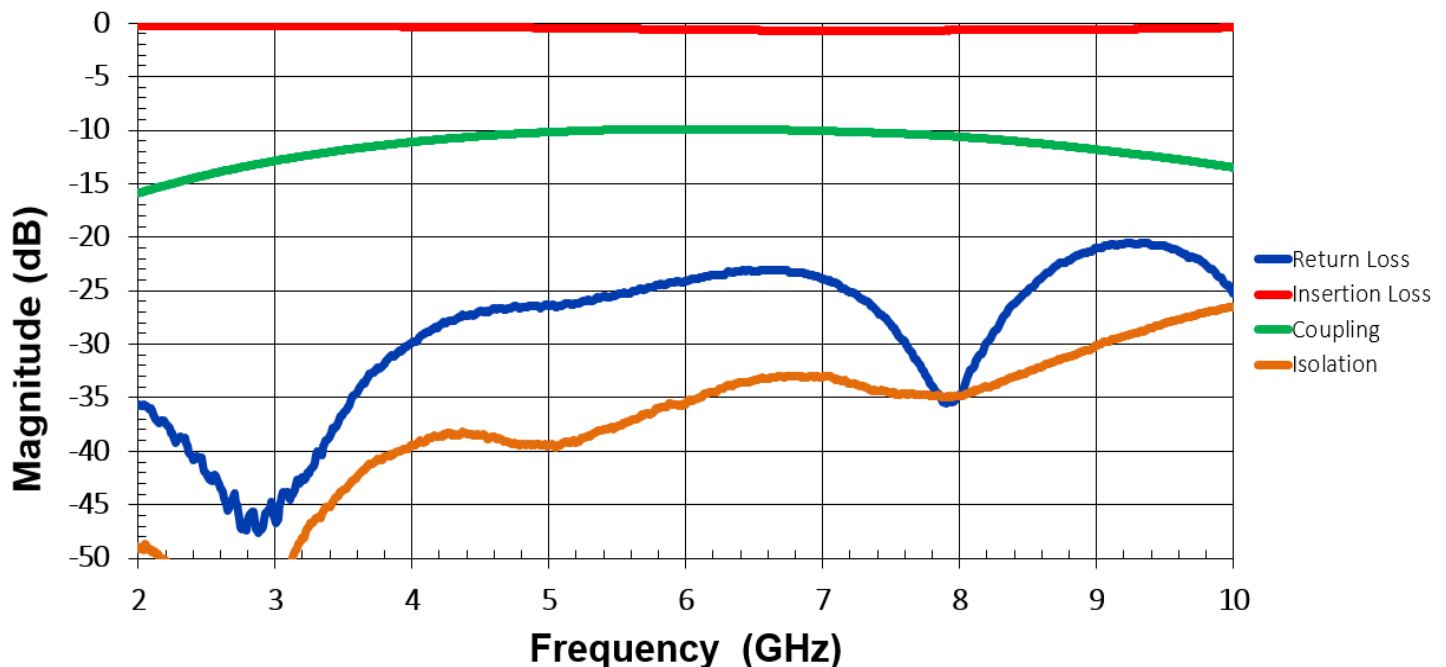
- Small Size
- Shielded Component
- Wirebond
- Moisture Sensitivity Level: MSL1
- Frequency Stable over Temperature
- Operating & Storage Temp: -55°C to +125°C
- Characteristic Impedance: 50Ω

SPECIFICATIONS*

| Parameter | Frequency (GHz) | Min | Max |
|-------------------------------|--|-----|------|
| Passband Insertion Loss* (dB) | 4 - 8 | | 0.3 |
| Passband Return Loss (dB) | | 18 | |
| Coupling (dB) | | 10 | 11.5 |
| Directivity (dB) | | 20 | |
| Input Power | | | TBD |
| Size (LxWxH) | 0.180 x .080 x .015 in 4.572 x 2.032 x .381mm | | |

*Electrical specifications based on typical mounted performance at room temperature. Insertion loss shall vary ± 0.5 dB over temperature.

Typical Measured Performance

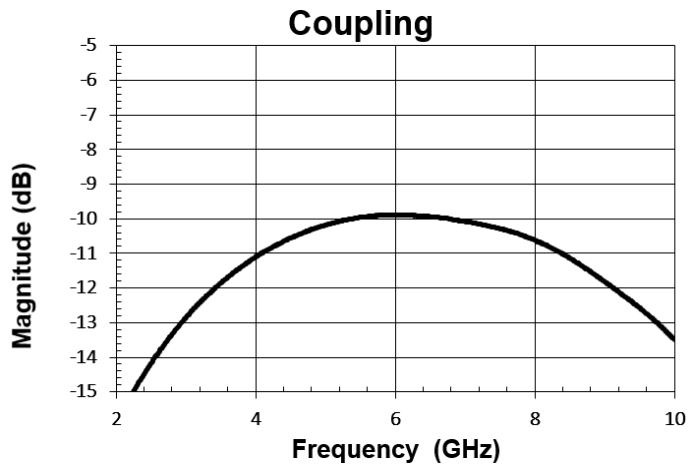
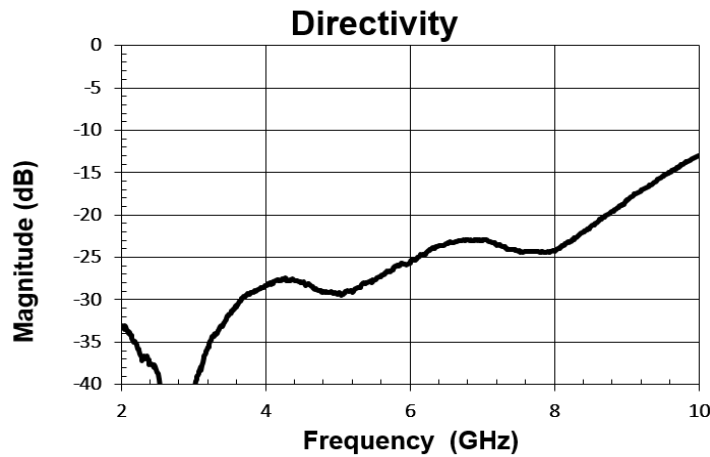


*Typical measured performance mounted on RO4350B test board at 25°C.

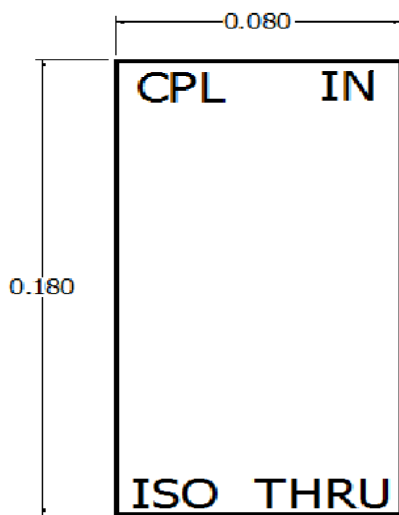
4 to 8GHz 10dB Directional Coupler

FPC06149

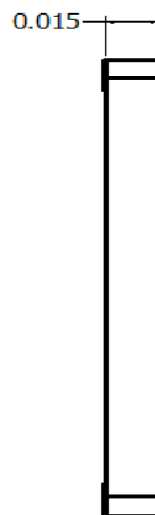
COMPLEX • DLI • JOHANSON MFG
NOVACAP • SYFER • VOLTRONICS
www.knowlesc capacitors.com



Physical Dimensions

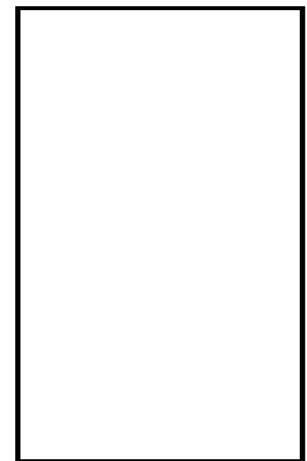


Top



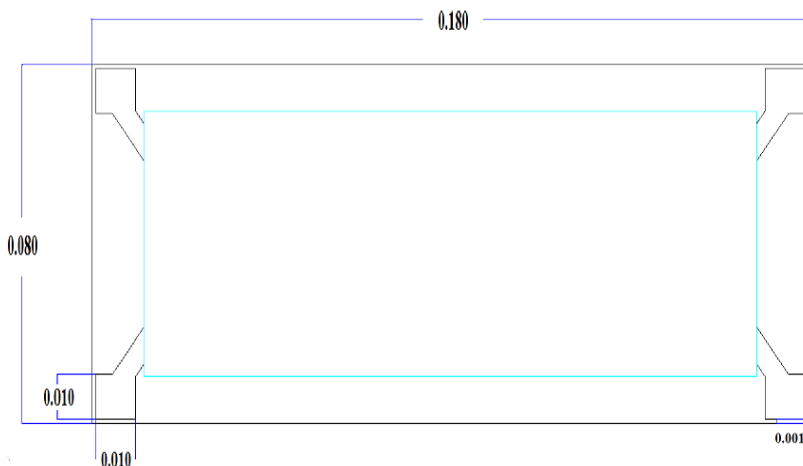
Side

Units = Inches



Bottom

Recommended PCB Layout



- 50Ω trace dimensions are application specific.
- Ensure adequate grounding beneath the part.
- Trace feed locations can be horizontal, vertical or angled.

