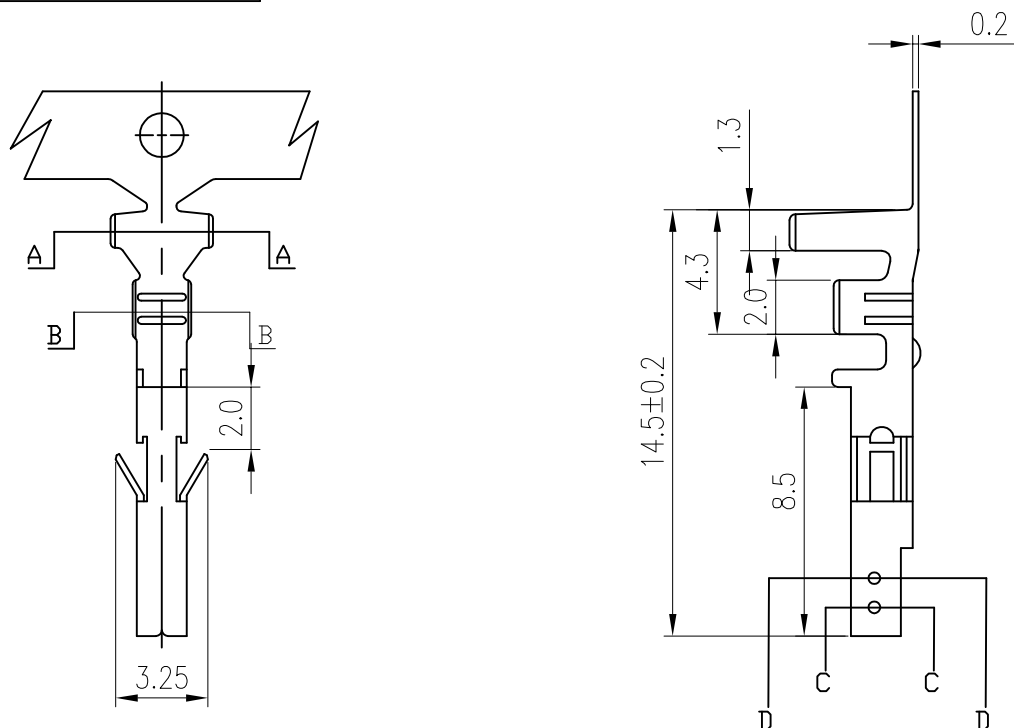




PRODUCT NUMBER

SEE PART NO. TABLE



NOTES:

1. MATERIAL: SEE ITEM 5L.
2. THIS TERMINAL IS USED WITH FCI RECEPTACLE HSG 10129815.
3. PRODUCT SPECIFICATION: GS-12-1288.
4. PACKAGE SPECIFICATION: GS-14-2450.
5. PART NUMBER SCHEME:
10129084- X X X LF

APPLICABLE AWG:

1. AWG #16~#22
2. AWG #24~#28

PLATING CODE:

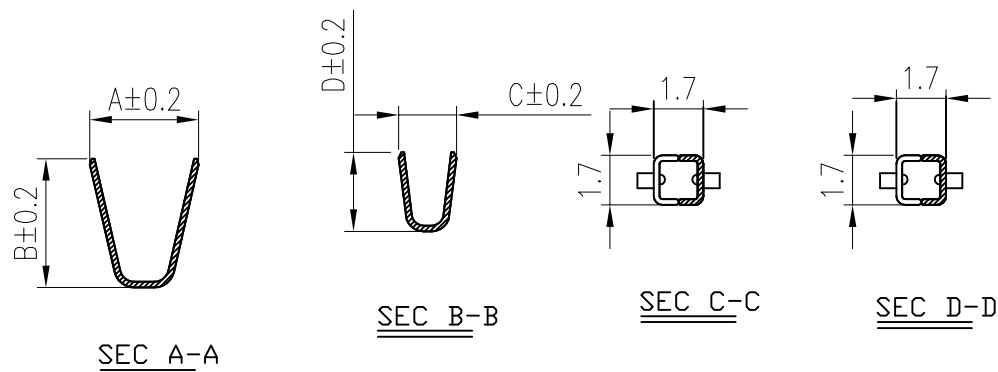
- 1: GOLD FLASH
- 2: TIN

MATERIAL CODE:

- 1: PHOSPHORUS BRONZE
- 2: BRASS
- 3: HIGH CONDUCTIVITY COPPER

6. DIMENSIONAL & PART NO. TABLE:

PART NO.	A	B	C	D	APPLICABLE WIRES
10129084-XX2LF	3.2	3.4	1.8	2.2	#24~#28
10129084-XX1LF	3.7	4.5	1.8	2.7	#16~#22



PRELIMINARY

mat'l. code				surface	tolerance	projection	product family		
ltr	ecn no	dr	date	tolerances unless otherwise specified			title		
				angles	linear	MM	RECEPTACLE TERMINAL FOR 4.2mm PITCH WIRE CONNECTOR		
				X.X ±0.40	X.XX ±0.30				
				X'±1'		scale	dwg no		
				dr	JESSIE WU	2015-01-04	sheet 1 of 1		
				enr	JESSIE WU	2015-01-04	10129084		
				chr	FANCY ZHANG	2015-01-04	A4		
				appd	PM ZHENG	2015-01-04	type		
sheet	revision	1					Customer Drawing		
Index	sheet	1							