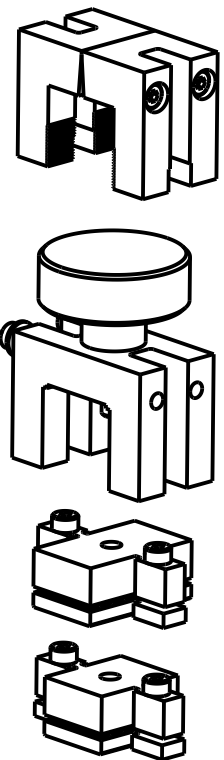
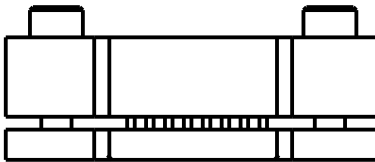
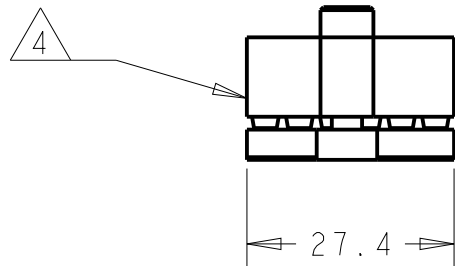
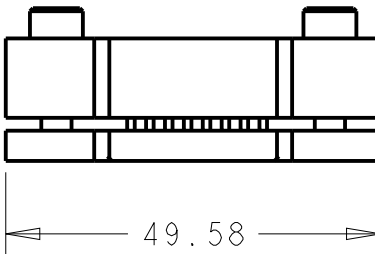
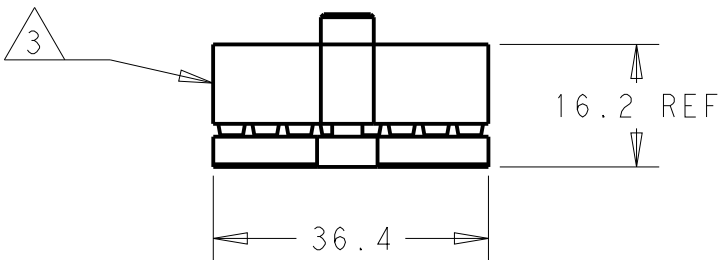
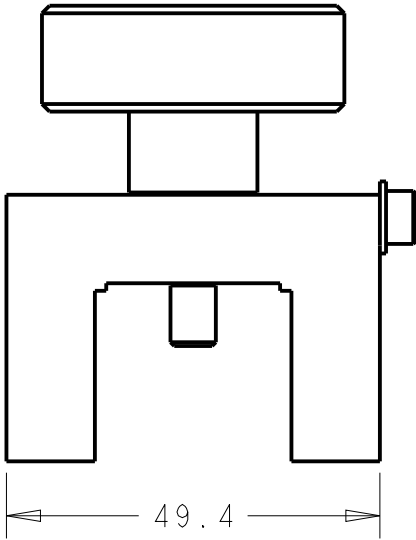
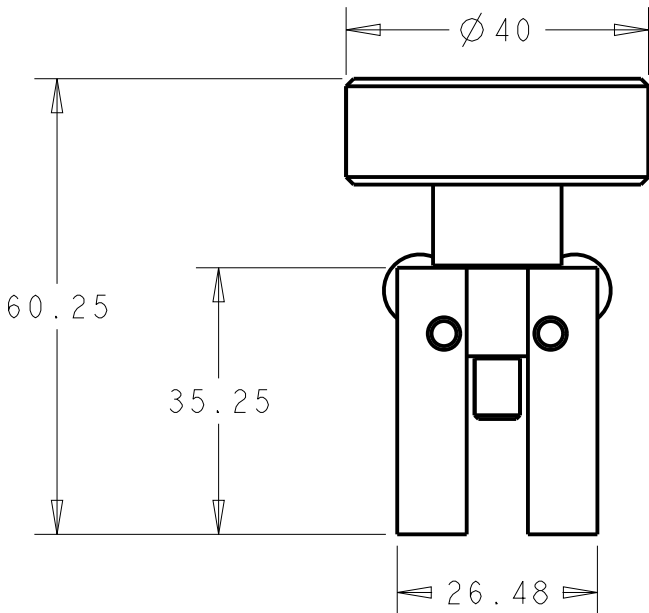
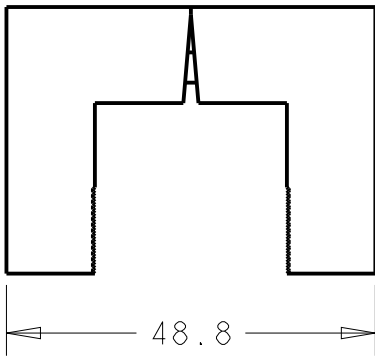
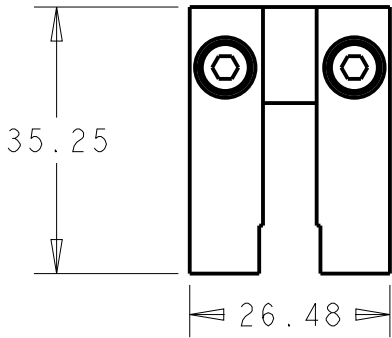

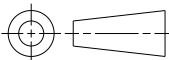


PART NUMBER	REV	CONNECTOR
2161756-1	C	2149968-1, 2169829-1

REVISIONS					
P	LTR	DESCRIPTION	DATE	DWN	APVD
	C	INITIAL RELEASE	06JUN2014	CZ	VL



- NOTE:
- 1. 2161756-1 IS SAME AS 1-2161756-1.
  - 2. ALL THE SCREWS IN THIS TOOL ARE M4 ALLEN SCREW.
  - 3 8X8 CLAMP ASSEMBLY.
  - 4 8X6 CLAMP ASSEMBLY.

THIS DRAWING IS A CONTROLLED DOCUMENT.		DWN C.ZHU 06JUN2014		 TE Connectivity									
DIMENSIONS: mm		TOLERANCES UNLESS OTHERWISE SPECIFIED:		NAME HRT, 8X6 8X8									
		CHK V.L 06JUN2014		- -									
		APVD V.L 06JUN2014											
		PRODUCT SPEC -											
		APPLICATION SPEC -											
		WEIGHT -											
MATERIAL -		FINISH -		SIZE A3		CAGE CODE 00779		DRAWING NO C-2161756		RESTRICTED TO -			
Customer Drawing								SCALE 1:1		SHEET 1 OF 1		REV C	