

8P1P YYY 2 0 0 YRB 01

SERIES 14.00 [0.551]

OF POSITIONS (Ex. 002) **SEE CHART A**

2 = FEMALE

SOLDER CUP (PANEL MOUNT)

1 = GOLD FLASH

RoHS COMPLIANT

NUT "B" COLOR
G = GREY
A = BLUE
J = YELLOW
N = BLACK
R = RED
V = GREEN

PLASTIC SHELL

CHARACTERISTICS

MATERIALS

HOUSING : ABS+PC

HOUSING COLOR : GREY

NUT A : BRASS

NUT A PLATING : NICKEL

CONTACTS : COPPER ALLOY

CONTACT PLATING : 7µ" GOLD PLATED OVER 196µ" NICKEL MIN.

INSULATOR : PPS (HIGH TEMPERATURE)

MECHANICAL

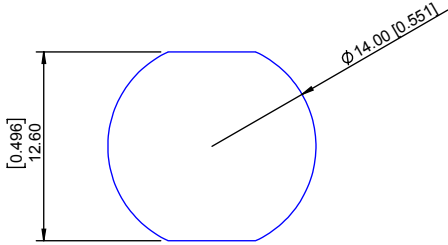
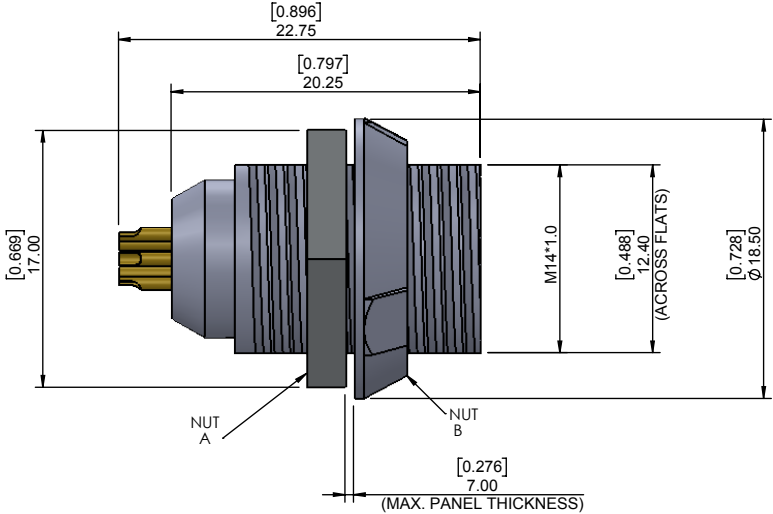
DURABILITY: 2000 CYCLES

OPERATING TEMP. RANGE: -20° C ~ +120° C

PROCESS TEMPERATURE : 260°C FOR 5 SECONDS

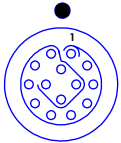
MAX. TORQUE VALUE : 0.7 Nm [6.19 IN/lbs]

IP RATING: 50



PANEL CUTOUT

TOLERANCE = +0.10, -0.0
[+0.004, -0.00]



14 POSITION
26 AWG MAX.
2 AMP MAX.
PIN Ø = 0.50 [0.020]

CONTACT
RESISTANCE = 10 mΩ
TEST VOLTAGE = 600V
WORKING VOLTAGE = 200V

CHART A

● = KEY LOCATION

VIEW FROM TERMINATION END

<p>2 POSITION 22 AWG MAX. 10 AMP MAX. PIN Ø = 1.30 [0.051]</p> <p>CONTACT RESISTANCE = 5 mΩ TEST VOLTAGE = 1200V WORKING VOLTAGE = 400V</p>	<p>3 POSITION 22 AWG MAX. 10 AMP MAX. PIN Ø = 1.30 [0.051]</p> <p>CONTACT RESISTANCE = 5 mΩ TEST VOLTAGE = 1200V WORKING VOLTAGE = 400V</p>	<p>4 POSITION 22 AWG MAX. 8 AMP MAX. PIN Ø = 0.90 [0.035]</p> <p>CONTACT RESISTANCE = 6 mΩ TEST VOLTAGE = 1200V WORKING VOLTAGE = 400V</p>	<p>5 POSITION 22 AWG MAX. 7 AMP MAX. PIN Ø = 0.90 [0.035]</p> <p>CONTACT RESISTANCE = 6 mΩ TEST VOLTAGE = 1050V WORKING VOLTAGE = 350V</p>	<p>6 POSITION 24 AWG MAX. 6 AMP MAX. PIN Ø = 0.70 [0.028]</p> <p>CONTACT RESISTANCE = 7.5 mΩ TEST VOLTAGE = 1050V WORKING VOLTAGE = 350V</p>	<p>7 POSITION 24 AWG MAX. 5 AMP MAX. PIN Ø = 0.70 [0.028]</p> <p>CONTACT RESISTANCE = 7.5 mΩ TEST VOLTAGE = 1050V WORKING VOLTAGE = 350V</p>	<p>8 POSITION 24 AWG MAX. 5 AMP MAX. PIN Ø = 0.70 [0.028]</p> <p>CONTACT RESISTANCE = 7.5 mΩ TEST VOLTAGE = 1050V WORKING VOLTAGE = 350V</p>	<p>9 POSITION 26 AWG MAX. 3 AMP MAX. PIN Ø = 0.50 [0.020]</p> <p>CONTACT RESISTANCE = 10 mΩ TEST VOLTAGE = 850V WORKING VOLTAGE = 280V</p>	<p>10 POSITION 26 AWG MAX. 3 AMP MAX. PIN Ø = 0.50 [0.020]</p> <p>CONTACT RESISTANCE = 10 mΩ TEST VOLTAGE = 850V WORKING VOLTAGE = 280V</p>
---	---	--	--	--	--	--	--	---

RoHS COMPLIANT



THESE DRAWINGS AND SPECIFICATIONS ARE THE PROPERTY OF NorComp AND SHALL NOT BE REPRODUCED, COPIED OR USED AS THE BASIS FOR THE MANUFACTURE OR SALE OF APPARATUS WITHOUT WRITTEN PERMISSION.

NorComp

DRAWN: M. SIGMON	DATE: 07-29-16	SCALE: N.T.S.	SHEET 1 OF 1	REV: 2
			DWG NO. 8P1PYYY200YRB01	