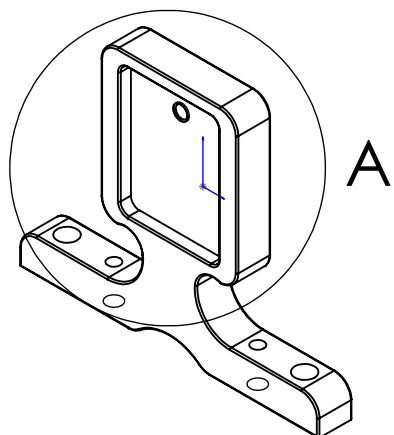
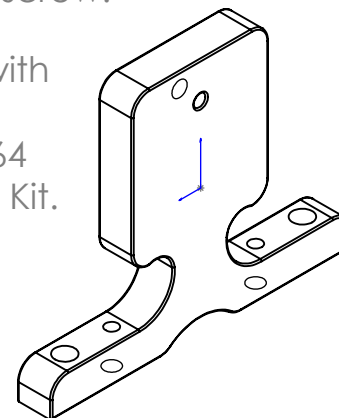


Material: 6061 Aluminum

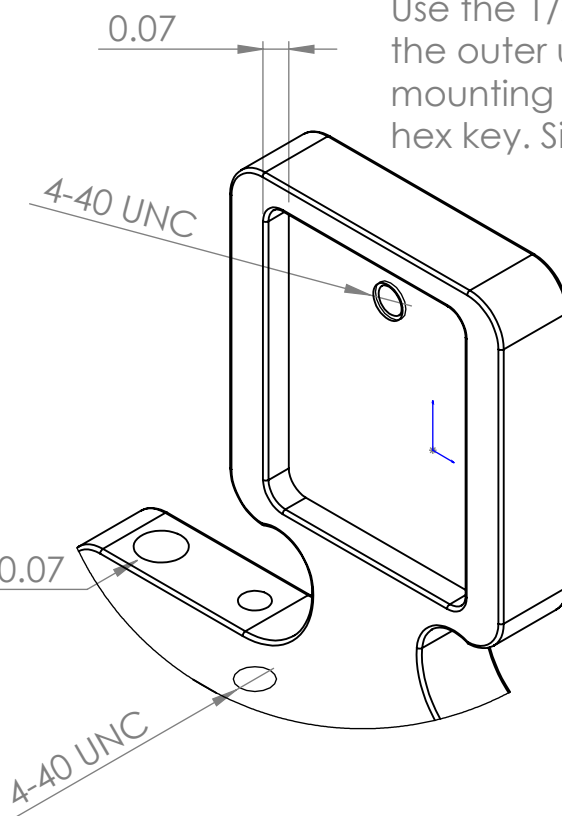
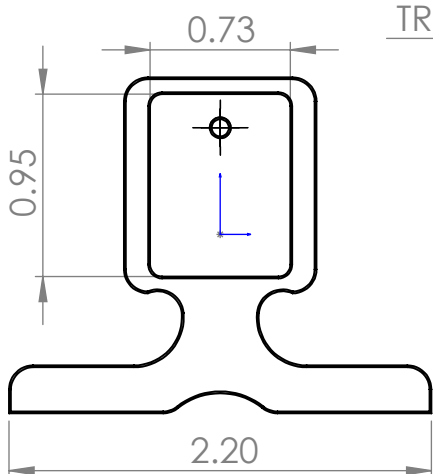
Secure LaserPING sensor in stand recess with the 3/16" #4-40 screw.



Use the 1/2" #6-32 screws with the outer unthreaded mounting holes, using a 7/64 hex key. Sized for Arlo Base Kit.

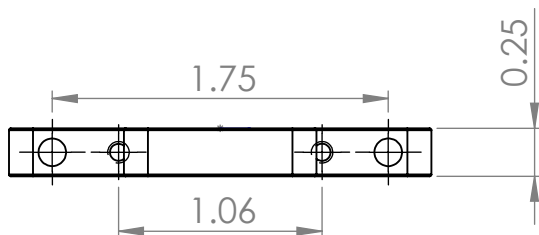


Use the 1/4" #4-40 screws with inner threaded holes, spaced for servo horns.



DETAIL A

SCALE 2 : 1



PROPRIETARY INFORMATION

THE INFORMATION CONTAINED IN THIS DRAWING IS
THE SOLE PROPERTY OF PARALLAX, INC. ANY
REPRODUCTION IN PART OR IN WHOLE WITHOUT THE
WRITTEN PERMISSION OF PARALLAX INC. IS
PROHIBITED.

UNLESS OTHERWISE SPECIFIED

DIMENSIONS ARE IN INCHES (mm)
LENGTH TOLERANCES:

ANGLE TOLERANCES:

X	$\pm 5^\circ$
X.X	$\pm 1^\circ$

PARALLAX ZTM

599 MENLO DRIVE
ROCKLIN, CA 95765

www.PARALLAX.com
(916) 624-8333

Title

Laser PING Sensor Stand

Drawn by K Glass

Date 4-13-2018

Part # 720-28041

Rev A-1

Parent Part # 725-28041

Sheet1

SCALE 1:1

Size: A

File: Laser Ping Sensor Stand