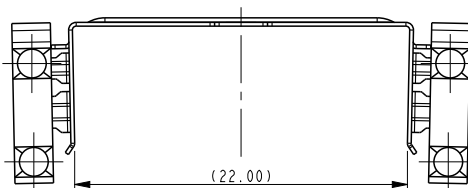
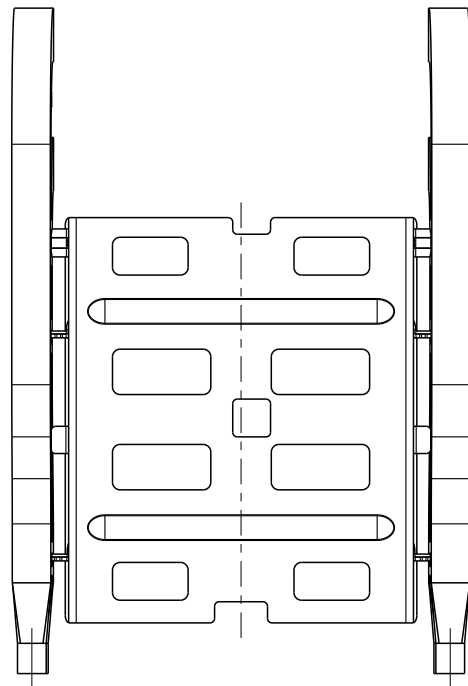
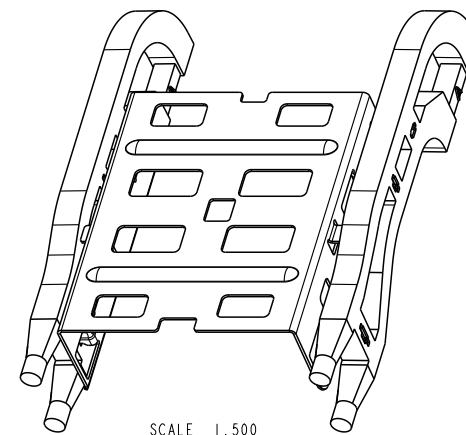


PART NUMBER

10122757-001LF



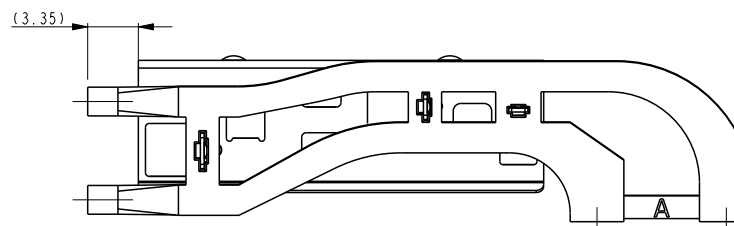
SCALE 2.000



SCALE 1.500

## NOTES:

1. MATERIALS:  
LIGHT PIPE MOUNTING CLIP: STAINLESS STEEL  
LIGHT PIPE: POLYCARBONATE
2. PRODUCT SPECIFICATION: GS-12-65X
3. PRODUCT PACKING SPECIFICATION: GS-14-XXXX  
LIGHT PIPE ASSEMBLIES PACKED BY TRAY.
4. APPLICATION SPECIFICATION: GS-20-032X
5. THIS CONNECTOR IS DESIGNED TO MEET THE REQUIREMENTS OF  
INDUSTRY SPECIFICATION SFF-8644.
6. LIGHT PIPE ASSEMBLY TO BE APPLIED AFTER CONNECTOR ASSEMBLY TO PCB.



spec ref				dr	Liu Jenson	2013/03/13	<div>projection</div> <div></div>	<div>MM</div> <div></div>	size	A4	scale	1.000					
tolerance std <div>ISO 406</div> <div>ISO 1101</div> <div>TOLERANCES UNLESS OTHERWISE SPECIFIED</div>				eng	Zhao Peter	2013/03/14			ecn no				-				
				chr	-	-			rel level				Released				
				appr	Collins Lu	2013/03/14								product family			
surface <div>✓</div> <div>ISO 1302</div>				linear	0.X	±X	<div>FCI</div> <div></div>	title	IX2 SIDE LIGHT PIPE SUB-ASSY WITH CLIP  MINI SAS HD				dwg no	10122757C		rev	A
					0.XX	±0.20											
					0.XXX	±X											
				angular				0°	±2°	www.fci.com	cat. no.	Product - Customer Drw				sheet 1 of 1	

Print File - REV C - 2009-06-09

PDS: Rev :A

STATUS:Released

Printed: Mar 14, 2013