

CABLE TYPE	CABLE TYPE	REFERENCE CABLE CODE	
		UN	UNH
A	RG-174, RG-200, RG-216, RG-178, RG-233	174	233
I	RG-100, AT&T 7242, RG-174, RG-200, RG-216, RG-233	100	233
B	RG-213, RG-233, RG-214, RG-174, RG-200, RG-216, RG-233	213	233
C	RG-174, RG-214, RG-178, RG-233, RG-216	174	216
O	RG-213, RG-233, RG-214, RG-174, RG-200, RG-216, RG-233	213	233
F1	RG-213, RG-233, RG-214, RG-174, RG-200, RG-216, RG-233	213	233
IIF	RG-213, RG-233, RG-214, RG-174, RG-200, RG-216, RG-233	213	233
FA	RG-213, RG-233, RG-214, RG-174, RG-200, RG-216, RG-233	213	233

REF. PART NO.	DESCRIPTION	QTY	UNIT
101-001	101-001	1	EA
101-002	101-002	1	EA
101-003	101-003	1	EA
101-004	101-004	1	EA
101-005	101-005	1	EA

REVISIONS		REV	DESCRIPTION	DATE	APPROVED
1	REVISED PER ECU 151/4				

RED INDICATES ORIGINAL

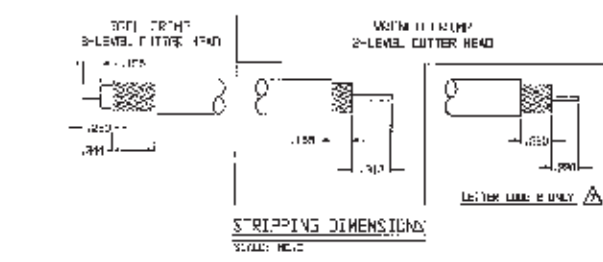
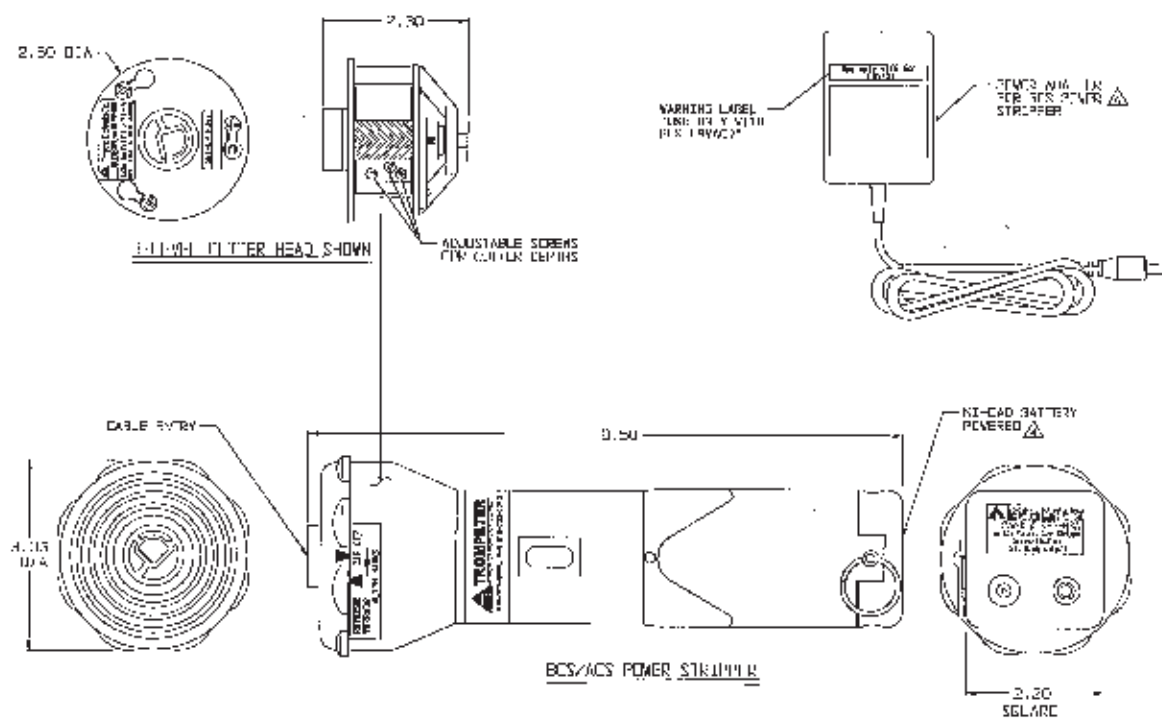
⚠ SEE SPECIAL STRIPPING DIMENSIONS

- EACH ITEM MAY BE SOLD SEPARATELY
- EACH KIT IS SUPPLIED WITH A 12.5 X 12.5 X 5.4 CARRYING CASE AND USER INSTRUCTIONS
- INDIVIDUAL BATTERY OR OPTIONAL POWER SOURCE MAY BE ORDERED AS SHOWN FOR TABLE 2
- EXAMPLE OF LUMINA-16 NUMBER:
 - UN / 024T B A
 - UN: CABLE WOUND CUTTER HEAD (SEE TABLE 1)
 - B: 2-LEVEL FOR TOOL CRIMP
 - A: CUTTER HEAD BASIC PART NO.

- POWER STRIPPER KIT:
- BLS - NI-CAD BATTERY WITH AC & DC CHARGER FOR NORTH & SOUTH AMERICA
 - BCS - NI-CAD BATTERY WITH AC & DL CHARGER AND RAPID CHARGER FOR NORTH & SOUTH AMERICA
 - BFS-EU - NI-CAD BATTERY WITH AC & DL CHARGER FOR EUROPE
 - BFS-UK - NI-CAD BATTERY WITH AC & DL CHARGER FOR UNITED KINGDOM
 - ACS - AC POWER CONVERTER FOR NORTH & SOUTH AMERICA
 - ACS-EU - AC POWER CONVERTER FOR EUROPE
 - ACS-UK - AC POWER CONVERTER FOR UNITED KINGDOM

2. PORTABLE IRON HEAD, POWERED CORDLESS STRIPPER KIT WITH AND WITHOUT CUTTING HEAD(S), WITH OPTIONAL POWER SOURCES, SEE TABLE 2

1. ALL DIMENSIONS IN INCHES



TROMPETER		RF connectivity	
DATE	6/9/06	SCALE	1:1
DATE	6/17/06	SCALE	1:1
DATE		SCALE	1:1
DATE		SCALE	1:1