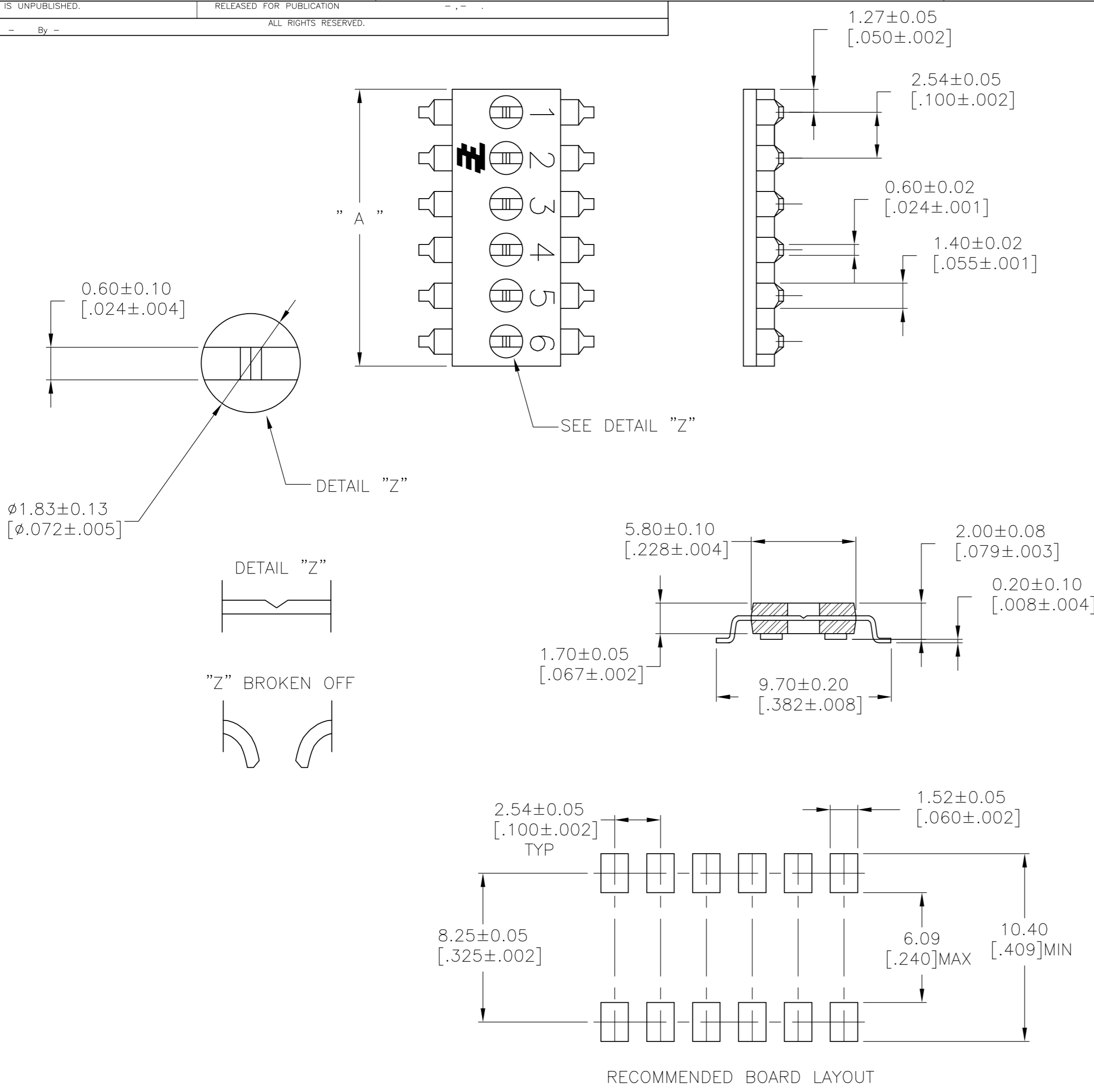


THIS DRAWING IS UNPUBLISHED. RELEASED FOR PUBLICATION  
 © COPYRIGHT - By - ALL RIGHTS RESERVED.

REVISIONS				
P	LTR	DESCRIPTION	DATE	APVD
C		REVISED PER ECO-12-007413	21APR12	KH PO
D		REVISED PER ECO-17-001163	27APR2017	RK PO



OBSOLETE	30.48 [1.200]	12	△2	2-1825189-0
	25.40 [1.000]	10	△2	1-1825189-9
	22.86 [.900]	9	△2	1-1825189-8
	20.32 [.800]	8	△2	1-1825189-7
OBSOLETE	17.78 [.700]	7	△2	1-1825189-6
	15.24 [.600]	6	△2	1-1825189-5
	12.70 [.500]	5	△2	1-1825189-4
	10.16 [.400]	4	△2	1-1825189-3
	7.62 [.300]	3	△2	1-1825189-2
	2.54 [.200]	2	△2	1-1825189-1
	30.48 [1.200]	12		1-1825189-0
	25.40 [1.000]	10		1825189-9
	22.86 [.900]	9		1825189-8
	20.32 [.800]	8		1825189-7
	17.78 [.700]	7		1825189-6
	15.24 [.600]	6		1825189-5
12.70 [.500]	5		1825189-4	
10.16 [.400]	4		1825189-3	
7.62 [.300]	3		1825189-2	
2.54 [.200]	2		1825189-1	
DIM A	POSITION	PART NO.		

**SPECIFICATIONS:**  
**MATERIAL**  
 CASE: HTN 30% GF UL94V-0, BLACK  
 TERMINAL: COPPER ALLOY, TIN OVER NICKEL PLATE

- △1 ALL MATERIALS AND FINISHES SHALL COMPLY WITH EU DIRECTIVE 2002/95/EC OF 27JAN2003 (ROHS)
- △2 TAPE AND REEL PER EIA-481

THIS DRAWING IS A CONTROLLED DOCUMENT.		DWN B.S.VISWESWARA 10MAY05		
DIMENSIONS: mm [INCHES]		CHK M.S.SARVER		
TOLERANCES UNLESS OTHERWISE SPECIFIED:		APVD M.S.SARVER	NAME SHUNT, DIP, PROGRAMMABLE SMT	
0 PLC ± -		PRODUCT SPEC	SIZE	
1 PLC ± -		APPLICATION SPEC	CAGE CODE	
2 PLC ± 0.03[.001]			DRAWING NO	
3 PLC ± -			RESTRICTED TO	
4 PLC ± -			A2 00779 C=1825189	
ANGLES ± -		WEIGHT	SCALE 5:1 SHEET 1 OF 1 REV D	
FINISH		CUSTOMER DRAWING		