

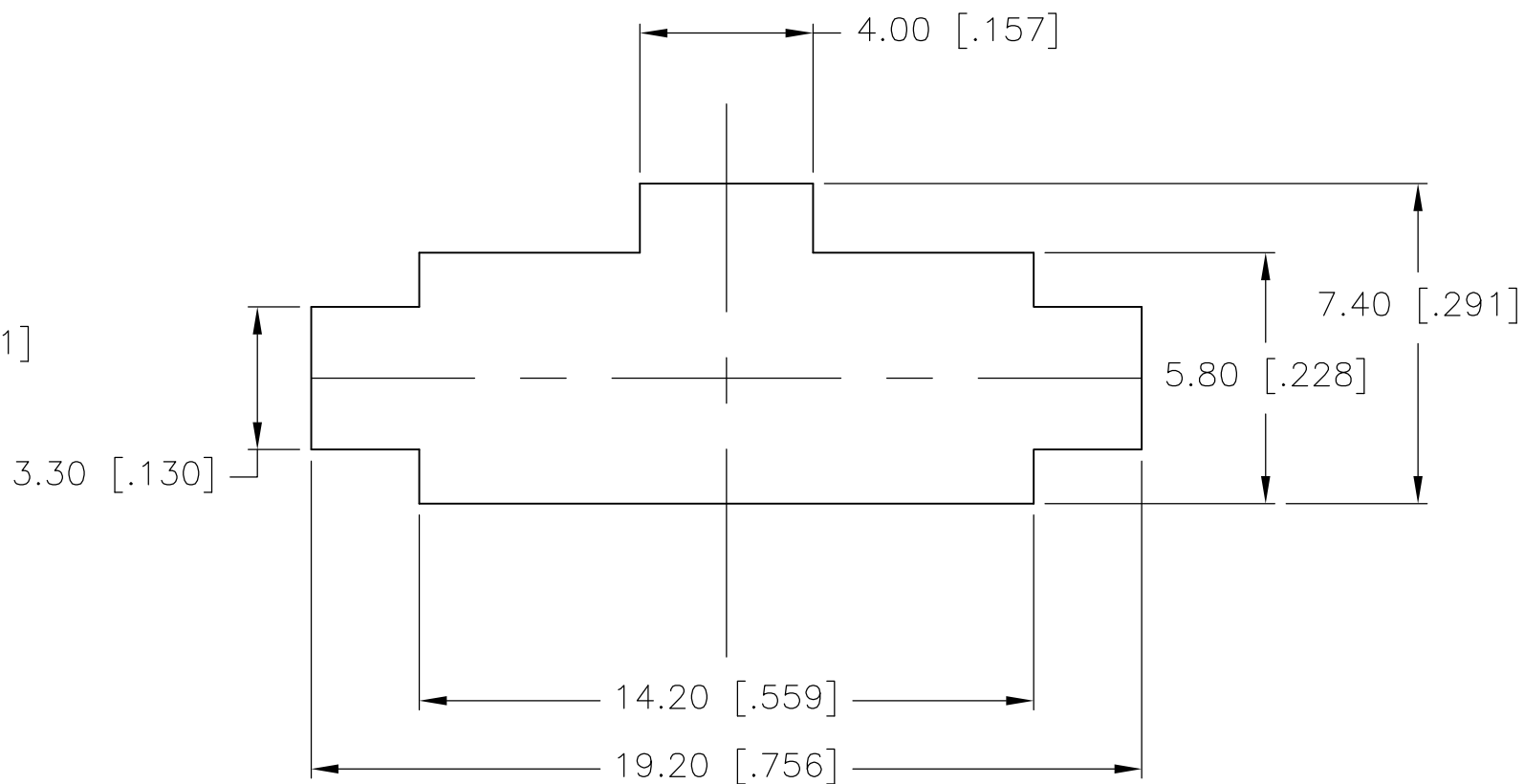
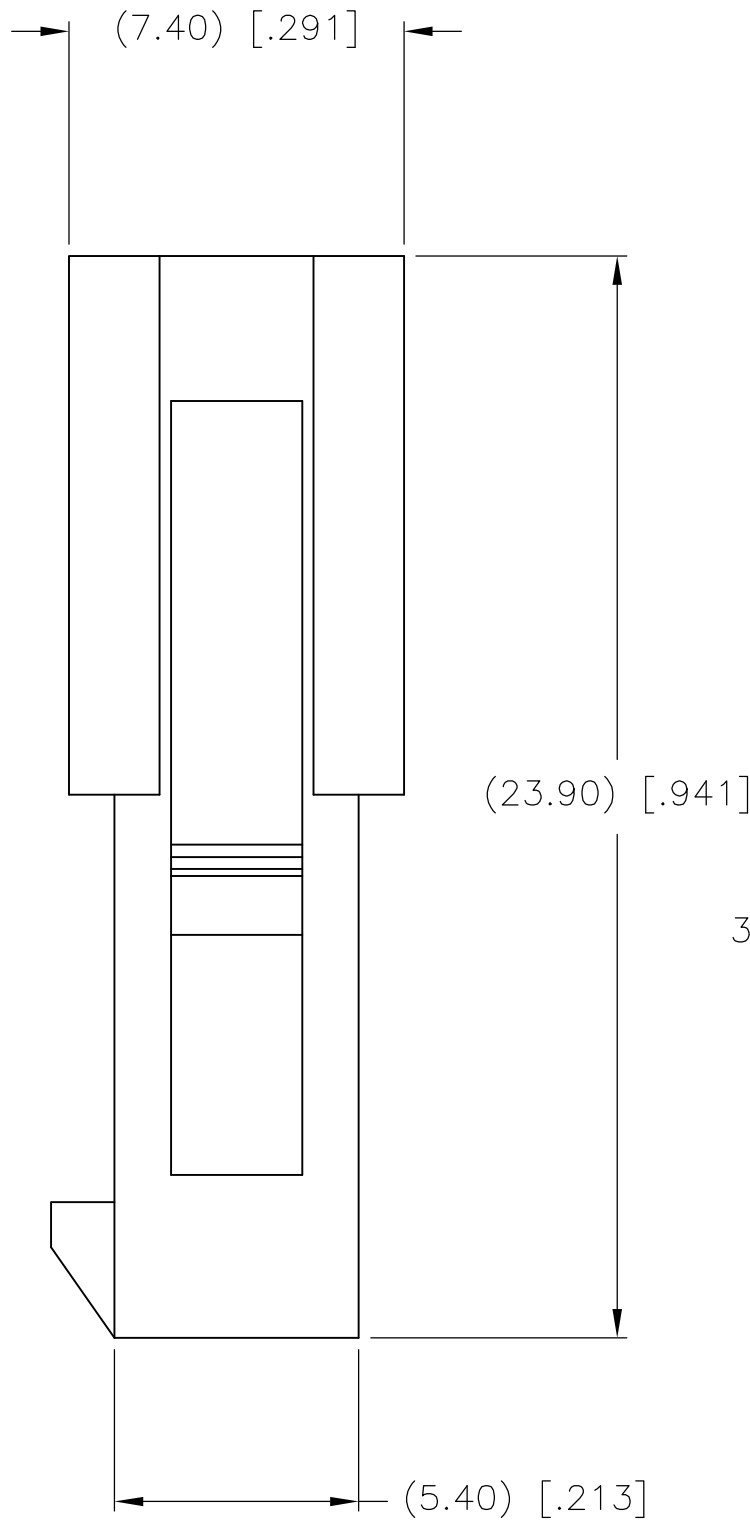
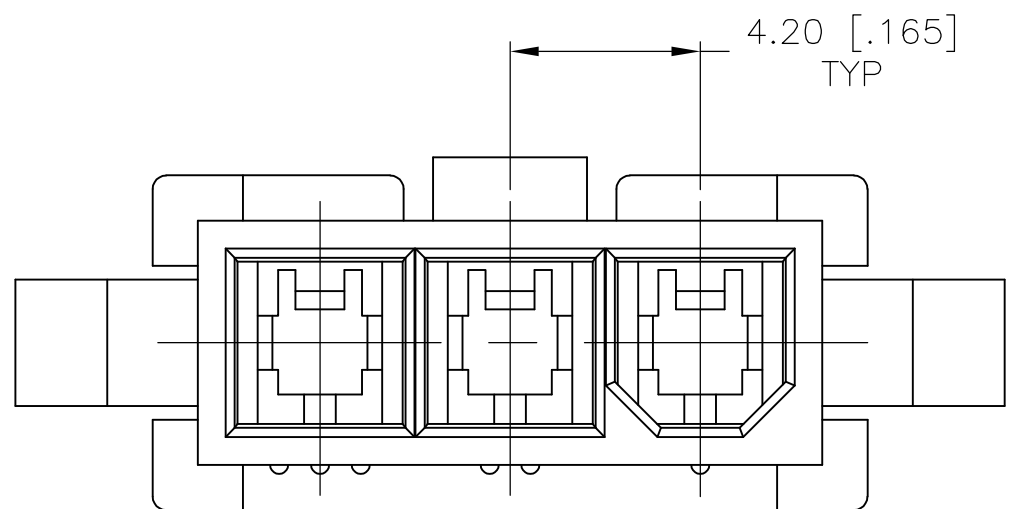
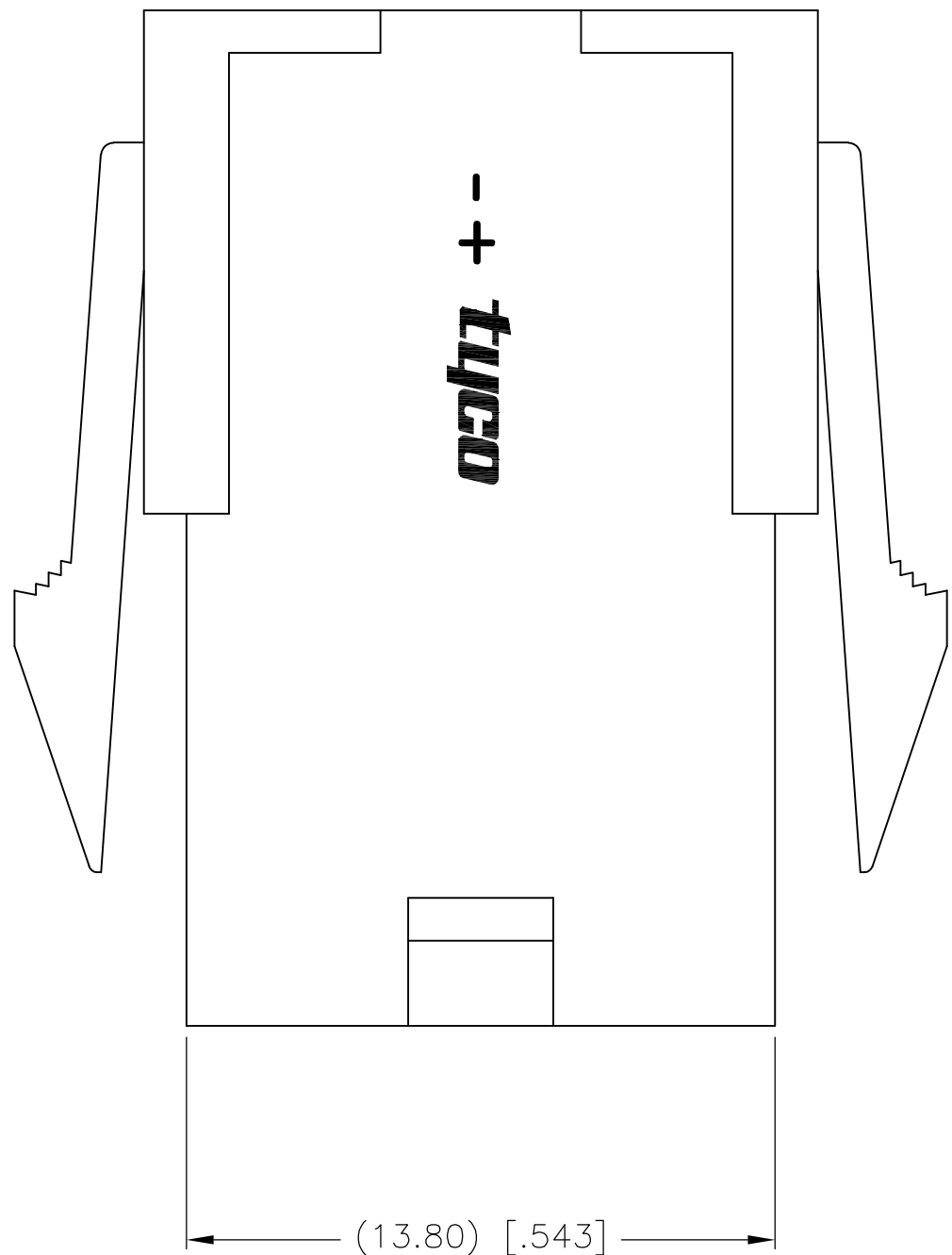
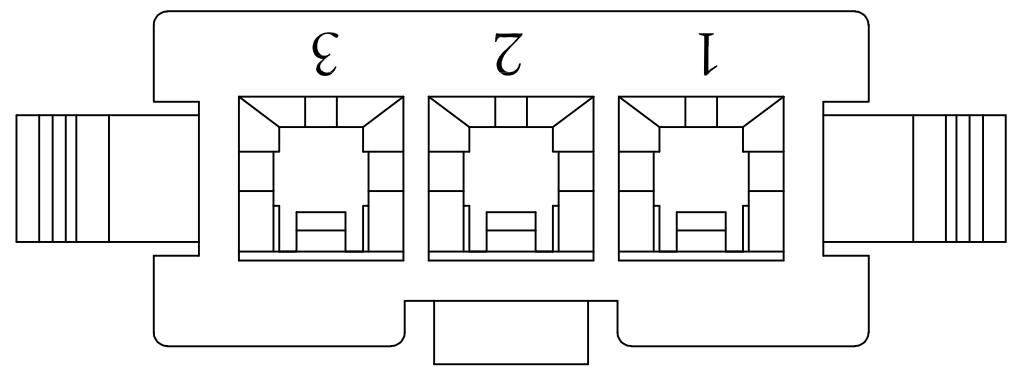
4

3

2

1

LOC	DIST	REVISIONS				
CM	00	P	LTR	DESCRIPTION	DATE	DWN
			A	WR-08-6	02DEC2008	CC



RECOMMENDED PANEL CUT-OUT
2.00 [.079] MAX THICK PANEL

- 1 MATERIAL: NYLON UL94V-2, BLACK.
- 2 PANEL MUST BE PUNCHED SO THAT THE HOUSING ENTERS THE PANEL IN THE SAME DIRECTION AS THE PUNCH.

2029197-3
PART NO.

THIS DRAWING IS A CONTROLLED DOCUMENT.		DWN K. WHITAKER 02DEC2008	Tyco Electronics Corporation Harrisburg, PA 17105-3608			
DIMENSIONS: mm [INCHES]		CHK C. CASH 02DEC2008				
		APVD C. CASH 02DEC2008	NAME PLUG HOUSING, 94V-2, BLACK, SINGLE ROW, VAL-U-LOK(TM)			
		PRODUCT SPEC				
MATERIAL		APPLICATION SPEC	SIZE A2	CAGE CODE 00779	DRAWING NO C=2029197	RESTRICTED TO
		WEIGHT	CUSTOMER DRAWING		SCALE 6:1	SHEET 1 of 1
		TOLERANCES UNLESS OTHERWISE SPECIFIED: 0 PLC ± 1 PLC ± 2 PLC ± 0.13 [.005] 3 PLC ± 4 PLC ± ANGLES ± 0°30' FINISH	REV A			

METRIC