

Dialight Lumidrives

LUMILEDS™ LUXEON® K2



FEATURES / BENEFITS

- ▲ For LUXEON K2 LEDs
- ▲ Available in spot, medium, wide and oval lenses
- ▲ Snap-in optics
- ▲ Greater than 85% efficiency

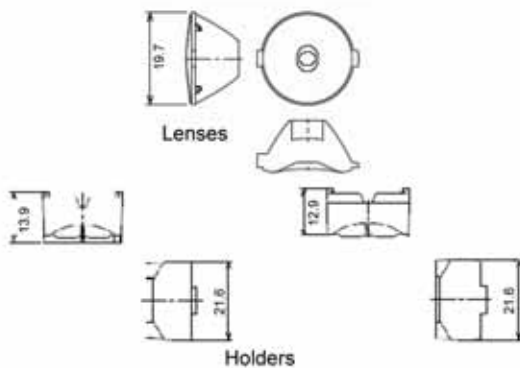
OPERATING CONDITIONS

- ▲ 105° C max temperature

MATERIALS/FINISH

- ▲ Lenses are optical grade PMMA acrylic
- ▲ Holders are made of durable polycarbonate

MECHANICAL DIMENSIONS



ORDERING INFORMATION

HOLDERS

Dialight P/N	Reference P/N	Description
OHK2BK	OH-K2-BK	LUXEON K2 LEDs - Black
OHK2CL	OH-K2-CL	LUXEON K2 LEDs - Clear
OHK2WH	OH-K2-WH	LUXEON K2 LEDs - White

LENS

Dialight P/N	Reference P/N	Description	Degree*
OP005	OP-005	Spot Lens	5°
OP015	OP-015	Medium Lens	15°
OP025	OP-025	Wide Lens	25°
OP520	OP-520	Oval Lens	5° X 20°

*All angles refer to half divergence

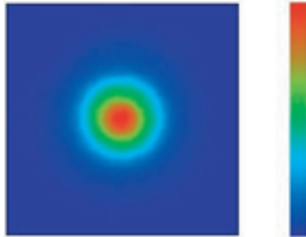
Dialight reserves the right to make changes at any time in order to supply the best product possible.

Dialight Corporation
 1501 Route 34 South • Farmingdale, NJ 07727 USA
 Tel: (1) 732-919-3119 • Fax: (1) 732-751-5778 • www.dialight.com

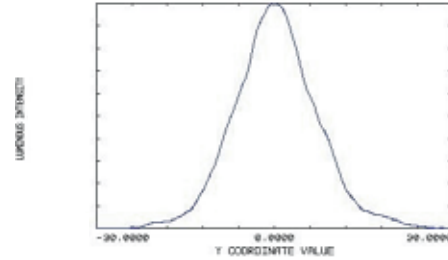


MDEXLUMK2_B

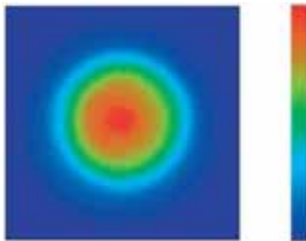
PHOTOMETRIC DATA



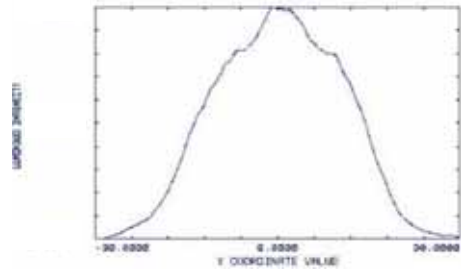
Spot Lens



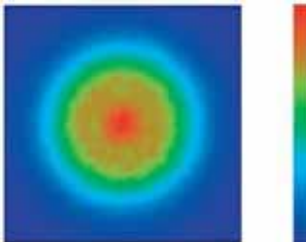
Typical half-angle divergence 5°



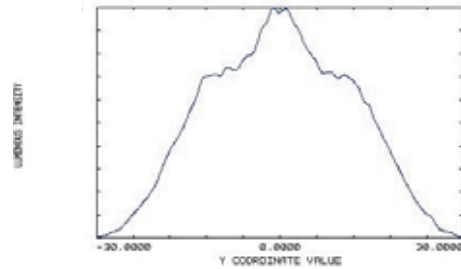
Medium Lens



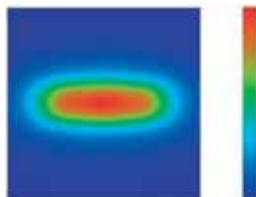
Typical half-angle divergence 15°



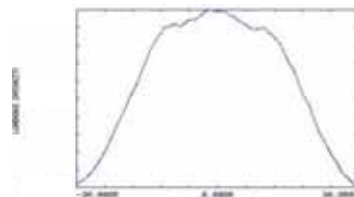
Wide Lens



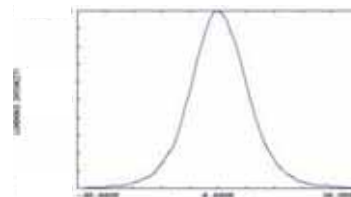
Typical half-angle divergence 25°



Oval Lens



Horizontal



Vertical

Typ. half-angle divergence
5° X 20°

Dialight reserves the right to make changes at any time in order to supply the best product possible.

Dialight Corporation
1501 Route 34 South • Farmingdale, NJ 07727 USA
Tel: (1) 732-919-3119 • Fax: (1) 732-751-5778 • www.dialight.com



Mouser Electronics

Authorized Distributor

Click to View Pricing, Inventory, Delivery & Lifecycle Information:

Dialight:

[OHK-2CL](#) [OHK-2BK](#) [OHK-2WH](#)