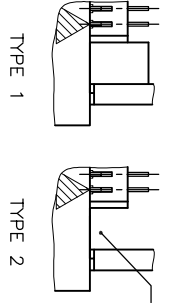
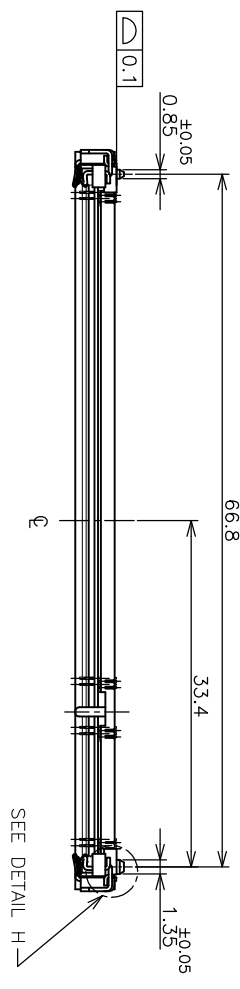


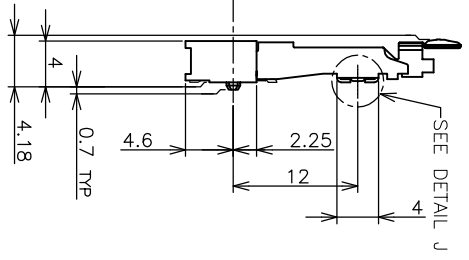
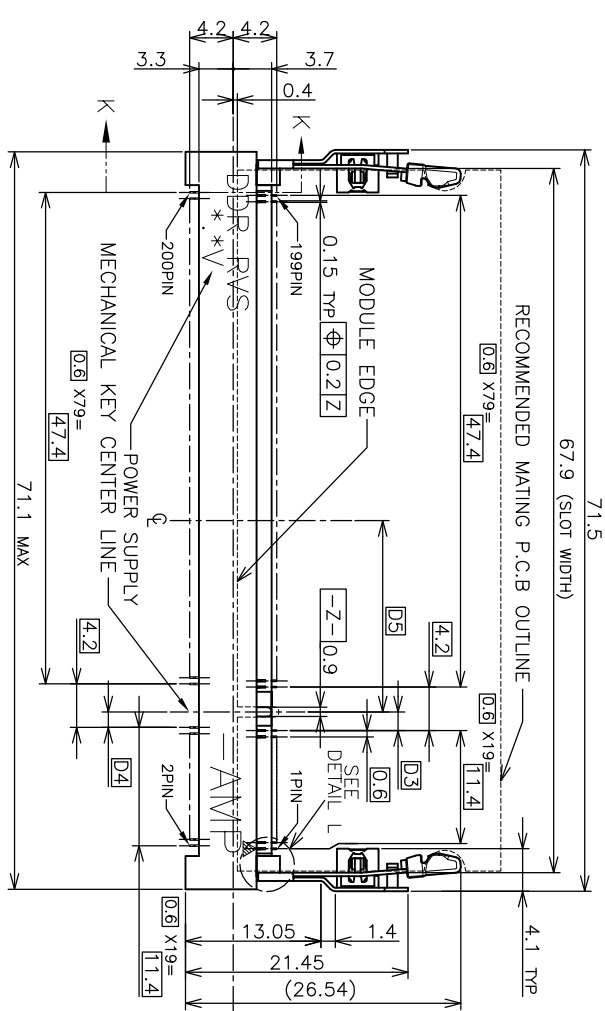
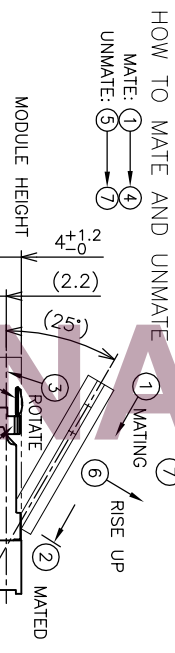
THIS DRAWING IS UNPUBLISHED.
 RELEASED FOR PUBLICATION
 ALL RIGHTS RESERVED.
 OCT. 2001.
 BY TYCO ELECTRONICS CORPORATION
 COPYRIGHT 2001

LOC ES
 DIST

| REV | DESCRIPTION | DATE | BY | APP'D |
|-----|-------------|---------|---------|-------|
| 1 | PRELIMINARY | 12MAY09 | F.C.S.Y | |



DETAIL L
 (SCALE 5:1)



- (APPLIED TO SHEET 1-2)
 1. MATERIAL ; HOUSING: HIGH TEMPERATURE THERMO PLASTIC UL94V-0
 CONTACT: COPPER ARROY
 LOCK LEVER: STAINLESS STEEL
 SOLDER PEG: COPPER ARROY
 SOLDERING AREA: GOLD FLASH ON 0.0013MIN ALL OVER NICKEL.
 CONTACT AREA: GOLD FLASH ON 0.0013MIN ALL OVER NICKEL.
 2. FINISH ; CONTACT AREA: GOLD FLASH ON 0.0013MIN ALL OVER NICKEL.
 SOLDERING AREA: GOLD FLASH PLT.
 SOLDER PEG: TIN PLATING.
 SOLDER PEG POSITION OF CONNECTOR SEE TABLE.
 MECHANICAL KEY POSITION OF CONNECTOR SEE TABLE.
 TOLERANCES NON-CUMULATIVE.
 NOT TO SCALE.
 3. INSIDE MUST BE RESIST COAT EXCEPT SOLDER PATTERN.
 4. IF THE MODULE DOESN'T INSERT AND LOCK IN THE LATCH SMOOTHLY,
 OPEN WIDE BOTH LATCHES BY MANUAL. AND THE MODULE MUST BE
 INSERTED AND LOCKED IN THE LATCH.

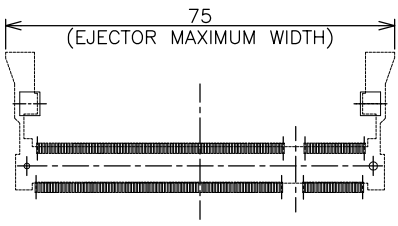
| TYPE | AVAILABLE | BOSSLESS | 1.8V (DDR2) | 17.55 | 2.4 | 2.7 | 200 | 1-6565692-4 |
|----------|----------------|----------|---------------------|-------|-----|-----|-----|-------------|
| TYPE 2 | AVAILABLE | — | 1.8V (DDR2) | 17.55 | 2.4 | 2.7 | 200 | 6565692-4 |
| TYPE 1 | AVAILABLE | BOSSLESS | 2.5V (DDR1) | 18.45 | 1.5 | 1.8 | 200 | 1-6565692-1 |
| TYPE 1 | AVAILABLE | — | 2.5V (DDR1) | 18.45 | 1.5 | 1.8 | 200 | 6565692-1 |
| TAB TYPE | TOOLING STATUS | REMARK | POWER SUPPLY (TYPE) | D5 | D4 | D3 | POS | PART NO. |

THIS DRAWING IS A CONTROLLED DOCUMENT.
 DIM: 24NOV05
 LEO ZHOU
 CHK: 24NOV05
 I.KAWAMAE
 APD: 24NOV05
 STEVEN YAO
 PRODUCT SPEC: 108-5701
 APPLICATION SPEC
 WEIGHT: 3.2 g
 RESTRICTED CUSTOMER

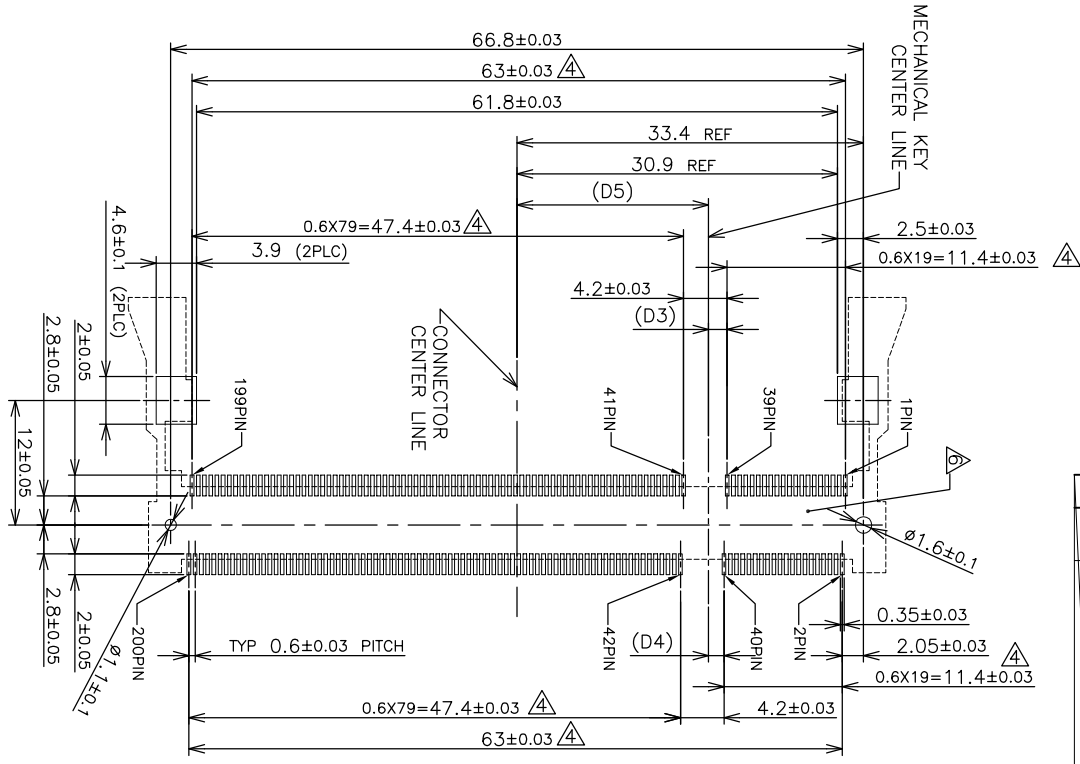
| DIMENSIONS: | TOLERANCES UNLESS OTHERWISE SPECIFIED: |
|-------------|--|
| MM | ±0.3 |
| 0 PIG | ±0.3 |
| 1 PIG | ±0.3 |
| 2 PIG | ±0.3 |
| 3 PIG | ±0.3 |
| 4 PIG | ±0.3 |
| ANGLES | ±.3° |

AMP 1470-19 REV 31MAR2000
 TycO Electronics Corporation
 SH/ChN GuiPngRD 668#
 DDD1 & DDR2 SODIMM SOCKET
 0.6mm PITCH 200POS
 LOW PROFILE REVERSE TYPE
 CAGE CODE: 00779
 DRAWING NO: 6565692
 SCALE: 2:1
 SHEET: 1 OF 4
 REV: D

REFERENCE P.C. BOARD PATTERN LAYOUT
 (CONNECTOR MOUNTING SIDE)



REAL SIZE (SCALE 1:1)



PRELIMINARY

| | | | |
|--------------|-------|-----|-----|
| 1.8V | 17.55 | 2.4 | 2.7 |
| 2.5V | 18.45 | 1.5 | 1.8 |
| POWER SUPPLY | D5 | D4 | D3 |

THIS DRAWING IS A CONTROLLED DOCUMENT.

| | | |
|-------------|----|--|
| DIMENSIONS: | MM | TOLERANCES UNLESS OTHERWISE SPECIFIED: |
| 0. PLG | ± | |
| 1. PLG | ± | |
| 2. PLG | ± | |
| 3. PLG | ± | |
| 4. PLG | ± | |
| ANGLES | ± | |
| FINISH | ± | |

| | |
|------|------------------|
| AP/D | PRODUCT SPEC |
| AP/D | APPLICATION SPEC |
| AP/D | WEIGHT |

| | |
|---------------|---------------------|
| DMN | RESTRICTED CUSTOMER |
| CHK | |
| NAME | |
| SIZE | |
| QAGE CODE | |
| DRAWING NO | |
| RESTRICTED TO | |

| | | | |
|-----|-------------|-------------|-----------|
| LOC | ES | DIST | 2 |
| P | LTR | DESCRIPTION | REVISIONS |
| - | SEE SHEET 1 | | |
| | | DATE | DMN |
| | | | AP/D |

Tyco Electronics
 Tyco Electronics Corporation
 SH/CN GuiPingRD 668#

NAME: DDR1 & DDR2 SODIMM SOCKET
 0.6mm PITCH 200POS
 LOW PROFILE REVERSE TYPE

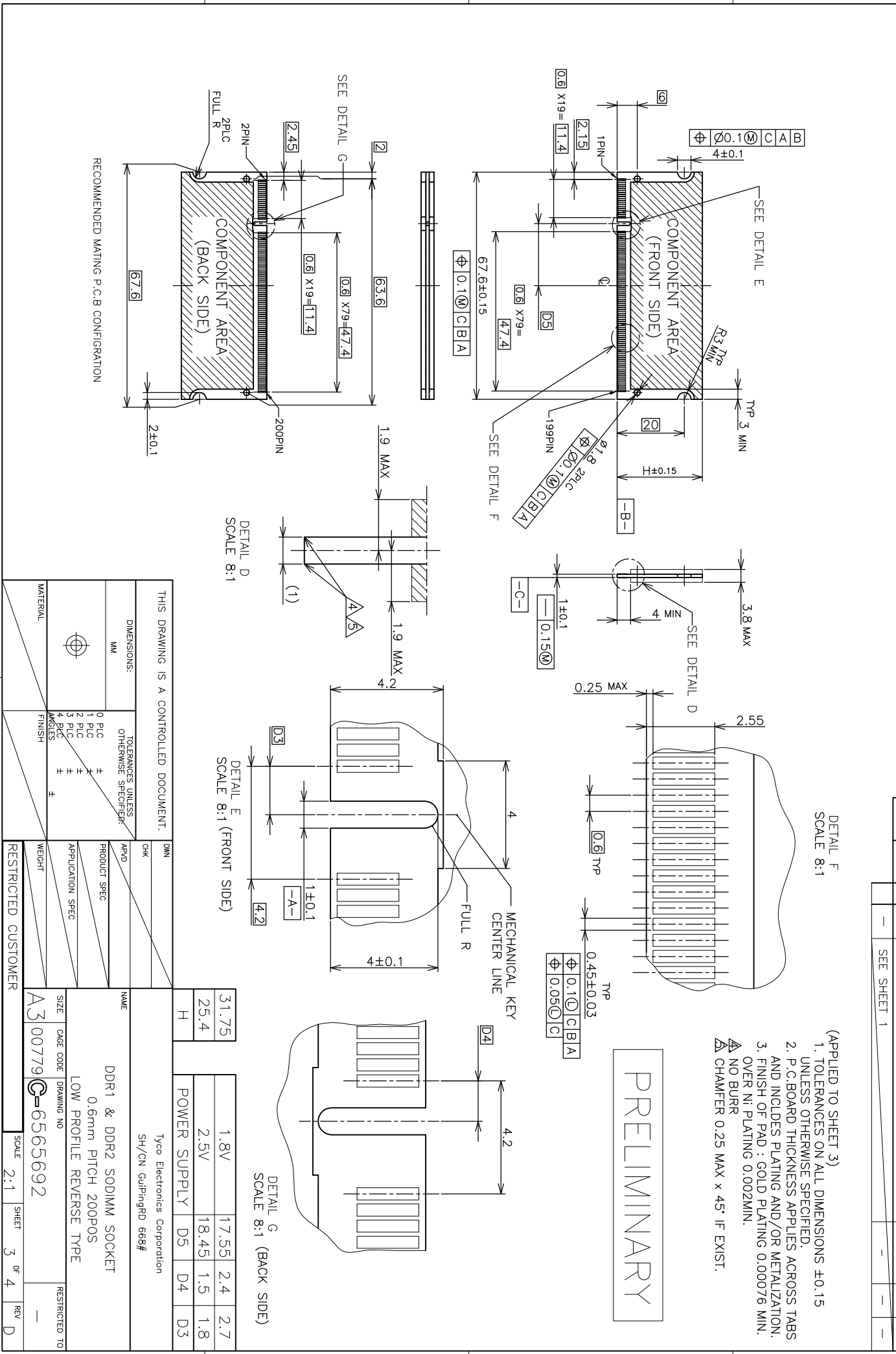
SIZE: A3
 QAGE CODE: 00779
 DRAWING NO: 6565692

RESTRICTED TO: _____

SCALE: 2:1 SHEET 2 OF 4 REV D

| | | | | | |
|-----|------|-------------|------|-----|------|
| LOC | DIST | REV | DATE | DMN | APVD |
| ES | | P | LIR | | |
| | | SEE SHEET 1 | | | |

| REVISIONS | | | | | |
|-------------|------|-----|------|--|--|
| DESCRIPTION | DATE | DMN | APVD | | |
| | | | | | |



DETAIL F
SCALE 8:1

- (APPLIED TO SHEET 3)
 1. TOLERANCES ON ALL DIMENSIONS ±0.15 UNLESS OTHERWISE SPECIFIED.
 2. P.C BOARD THICKNESS APPLIES ACROSS TABS AND INCLUDES PLATING AND/OR METALIZATION.
 3. FINISH OF PAD : GOLD PLATING 0.00076 MIN. OVER Ni PLATING 0.002MIN.
 ▲ NO BURR
 ▲ CHAMFER 0.25 MAX x 45° IF EXIST.

DETAIL D
SCALE 8:1

DETAIL E
SCALE 8:1 (FRONT SIDE)

DETAIL G
SCALE 8:1 (BACK SIDE)

THIS DRAWING IS A CONTROLLED DOCUMENT.

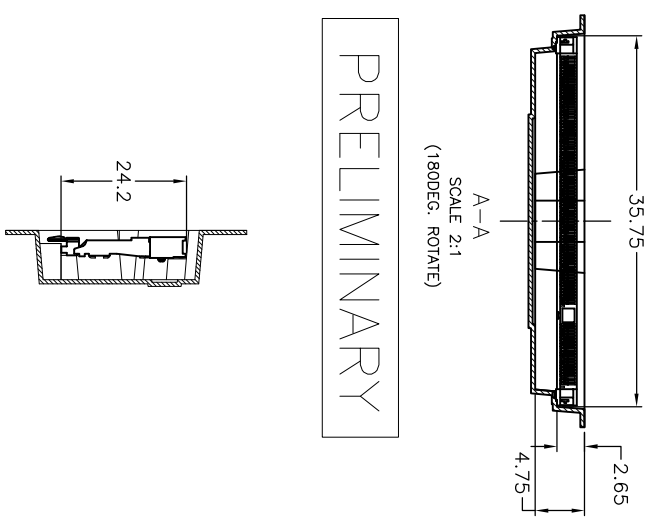
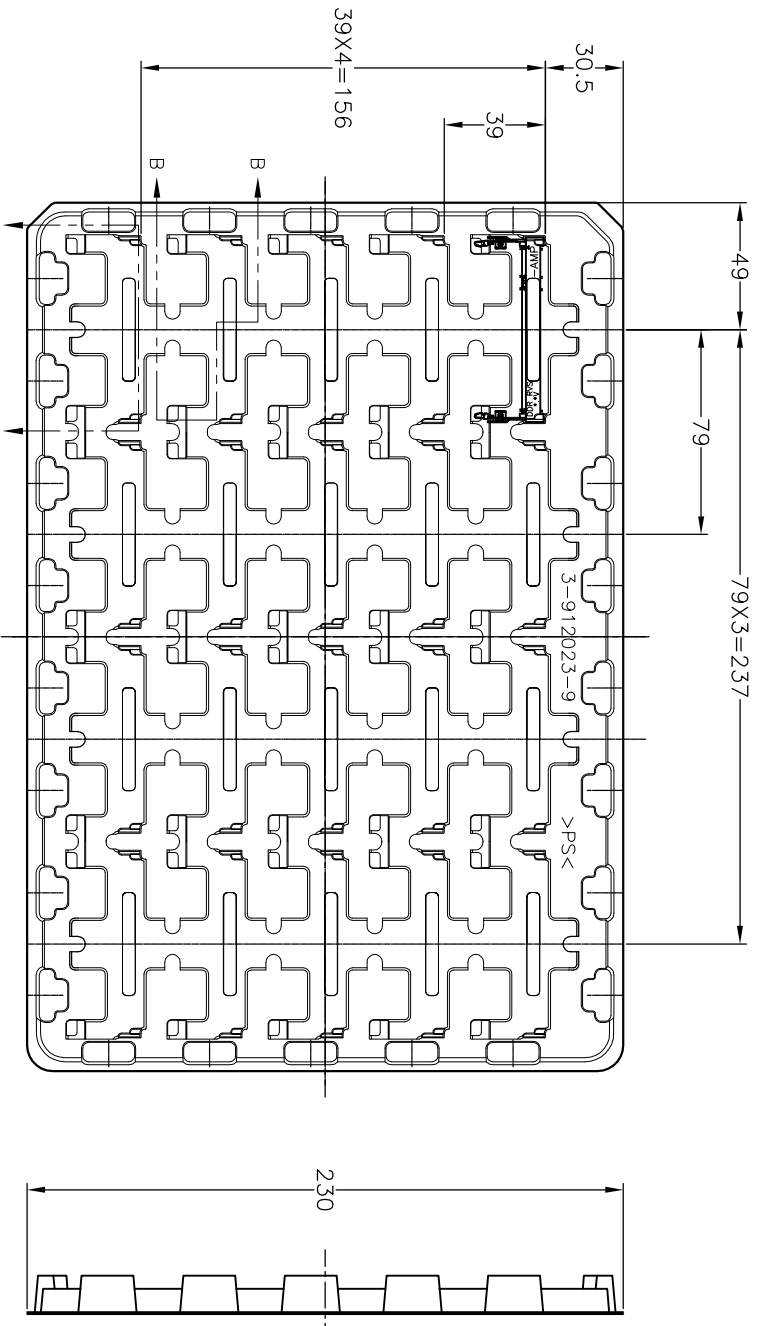
| | | |
|-------------|----|--|
| DIMENSIONS: | MM | TOLERANCES UNLESS OTHERWISE SPECIFIED: |
| 0 PIG | ± | |
| 1 PIG | ± | |
| 2 PIG | ± | |
| 3 PIG | ± | |
| 4 PIG | ± | |
| ANGLES | ± | |
| FINISH | ± | |

| | | | |
|-----|-----|------|---------------------------|
| DMN | CHK | APVD | NAME |
| | | | DDR1 & DDR2 SODIMM SOCKET |
| | | | 0.6mm PITCH 200PINS |
| | | | LOW PROFILE REVERSE TYPE |
| | | | RESTRICTED TO |

| | | | |
|------|-----------|-------------|---------------|
| SIZE | CAGE CODE | DRAWING NO. | RESTRICTED TO |
| A3 | 00779 | 6565692 | |

| | | | |
|-------|-------|----|-----|
| SCALE | SHEET | OF | REV |
| 2:1 | 3 | 4 | D |

| REVISIONS | | DATE | DMN | APVD |
|-------------|--|------|-----|------|
| DESCRIPTION | | | | |
| | | | | |



PRELIMINARY

A-A
 SCALE 2:1
 (180DEG. ROTATE)

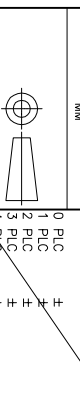
B-B
 SCALE 2:1

| | | |
|---------------------|-----------|-------------|
| 1.8V (DDR2) | 20EA/TRAY | 1-6565692-4 |
| 1.8V (DDR2) | 20EA/TRAY | 6565692-4 |
| 2.5V (DDR1) | 20EA/TRAY | 1-6565692-1 |
| 2.5V (DDR1) | 20EA/TRAY | 6565692-1 |
| POWER SUPPLY (TYPE) | QTY | P/N |

- (APPLIED TO SHEET 4)
1. THE DIRECTION OF EACH CONNECTOR ON A TRAY IS REFERRED TO THIS DRAWING.
 2. GENERAL TOLERANCE: ±0.5

THIS DRAWING IS A CONTROLLED DOCUMENT.

| DIMENSIONS: | TOLERANCES UNLESS OTHERWISE SPECIFIED: |
|-------------|--|
| MM | 0 PIC ± |
| | 1 PIC ± |
| | 2 PIC ± |
| | 3 PIC ± |
| | 4 PIC ± |
| | ANGLES ± |



| DMN | CHK | APVD | PRODUCT SPEC | APPLICATION SPEC | WEIGHT | FINISH | MATERIAL |
|-----|-----|------|--------------|------------------|--------|--------|----------|
| | | | | | | | |

| | | | |
|---|--|-----------|---------------------------|
| Tyco Electronics Corporation SH/CN GuilpingRD 668# | | NAME | DDR1 & DDR2 SODIMM SOCKET |
| 0.6mm PITCH 200POS | | SIZE | A3 |
| LOW PROFILE REVERSE TYPE | | CAGE CODE | 00779 |
| DRAWING NO | | 6565692 | RESTRICTED TO |
| RESTRICTED CUSTOMER | | SCALE | 1:2 |
| | | SHEET | 4 |
| | | OF | 4 |
| | | REV | D |