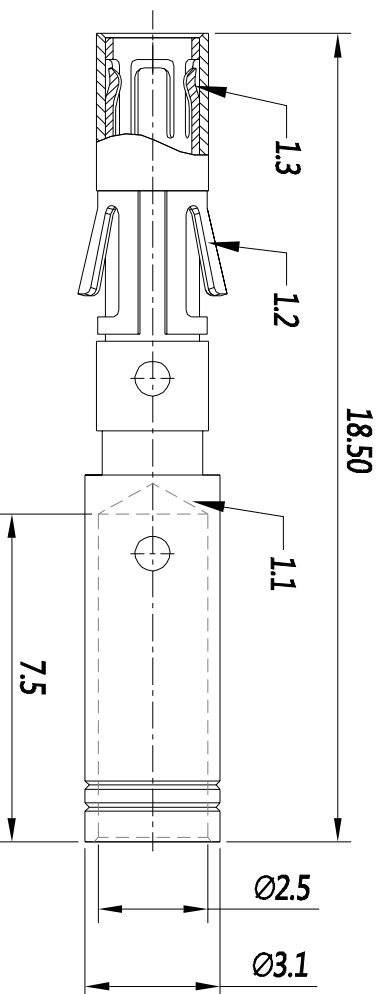


| REVISIONS | | | | |
|-----------|-----|------------------|-------------|-----------|
| REV | ECO | DESCRIPTION | DATE | BY APPR |
| B1 | - | RELEASED DRAWING | JULY-1-2014 | BEN TOMMY |



| P/N | CONTACT PLATING(MATING AREA) |
|------------|---------------------------------|
| MS14M23T | TIN PLATING OVER NICKEL. |
| MS14M23S | SILVER PLATING OVER NICKEL. |
| MS14M23F | GOLD FLASH PLATING OVER NICKEL. |
| MS14M23G10 | 10µ" GOLD PLATING OVER NICKEL. |
| MS14M23G15 | 15µ" GOLD PLATING OVER NICKEL. |
| MS14M23G30 | 30µ" GOLD PLATING OVER NICKEL. |

- NOTES : (UNLESS OTHERWISE SPECIFIED)
- MATERIAL :
 - CONTACT BODY : COPPER ALLOY.
 - POSITIONING CLIP : COPPER ALLOY.
 - CROWN CONTACTS : COPPER ALLOY.
 - SPECIFICATIONS :
 - CURRENT RATING : 13A(MAX).
 - TERMINATION TYPE : CRIMPING.
 - WIRE RANGE : 16~14AWG.
 - SUITABLE SOCKET TYPE : MP14M23XX.
 - ROHS COMPLIANT.
 - ALL DIMENSIONS ARE FOR REFERENCE USE ONLY.

| QUANTITY | PART NUMBER | DESCRIPTION | ITER |
|---------------------------------------|-------------|---|------|
| MATERIALS LIST | | | |
| UNLESS OTHERWISE SPECIFIED | | | |
| 1) All dimensions are in millimeters. | | | |
| 2) Tolerances are as follows: | | | |
| 1 Pt. DEC 2d 20 | | | |
| 2 Pt. DEC 2d 20 | | | |
| 3 Pt. DEC 2d 20 | | | |
| 3) Note reference = | | | |
| MATERIAL SPECIFICATIONS: | | CUSTOMER: | |
| PROCESS SPECIFICATIONS: | | THIS DRAWING IS SUPPLIED FOR INFORMATION ONLY. SPECIFICATIONS AND PERFORMANCE DATA ARE THE PROPERTY OF SINE SYSTEMS. ALL RIGHTS OF REPRODUCTION ARE RESERVED. ALL MANUFACTURING VARIATION | |
| NEXT ASST: | | SCALE: NONE | |

Amphenol

Sine Systems - www.amphenol-sine.com
 44724 Morley Drive
 Clinton Township, MI 48038

ECO-MATE SOCKET CONTACT
 MACHINE, 16-14AWG, SIZE 16

| | | | |
|-------|------|-----------|----------|
| SIZE | TYPE | DWG NO. | REVISION |
| B | C- | MS14M23XX | B1 |
| SCALE | NONE | SHEET | 1 OF 1 |