



### Main

|                                 |  |
|---------------------------------|--|
| Range of product                | Harmony XB5                              |
| Product or component type       | Head for push-button                     |
| Device short name               | ZB5                                      |
| Bezel material                  | Black plastic                            |
| Head type                       | Standard                                 |
| Mounting diameter               | 0.87 in (22 mm)                          |
| Sale per indivisible quantity   | 1  |
| Shape of signaling unit head    | Round                                    |
| Type of operator                | Spring return                            |
| Operator additional information | Vertical mounting<br>Horizontal mounting |

### Complementary

|                                    |  |
|------------------------------------|--|
| CAD overall width                  | 1.46 in (37 mm)  |
| CAD overall height                 | 0.73 in (18.5 mm)  |
| CAD overall depth                  | 1.46 in (37 mm)  |
| Product weight                     | 0.05 lb(US) (0.024 kg)   |
| Resistance to high pressure washer | 0.01 psi (90 Pa) at 181 °F (82.5 °C)   |
| Operator profile                   | Light blue flush unmarked  |
| Mechanical durability              | 10000000 cycles  |
| Electrical composition code        | C15 1 contacts using single blocks in front mounting<br>C15 1 contacts using single blocks in front mounting<br>C11 for 3 contacts using single blocks in front mounting<br>SF1 for 3 contacts using single blocks in front mounting<br>C1 for 9 contacts using single blocks in front mounting<br>C2 for 9 contacts using single and double blocks in front mounting<br>SR1 for 3 contacts using single blocks in rear mounting |

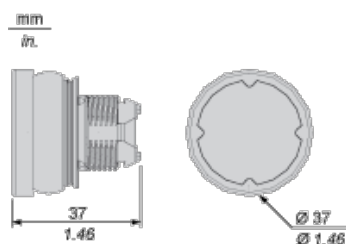
### Environment

|                                       |   |
|---------------------------------------|---|
| ambient air temperature for storage   | -40...185 °F (-40...85 °C)  |
| ambient air temperature for operation | -40...158 °F (-40...70 °C)  |
| electrical shock protection class     | Class II conforming to IEC 61140  |
| IP degree of protection               | IP67<br>IP66 conforming to IEC 60529<br>IP69K                                     |
| NEMA degree of protection             | NEMA 12<br>NEMA 13<br>NEMA 4 conforming to UL 508                                 |
| IK degree of protection               | IK03 conforming to IEC 62262  |
| standards                             | IEC 60947-1<br>IEC 60947-5-1<br>UL 508<br>CSA C22.2                               |
| product certifications                | CE<br>CSA<br>UL   |
| vibration resistance                  | 5 gn (f = 2...500 Hz) conforming to IEC 60068-2-6                                 |
| shock resistance                      | 30 gn (duration = 18 ms) half sine wave acceleration conforming to IEC 60068-2-27 |

### Offer Sustainability

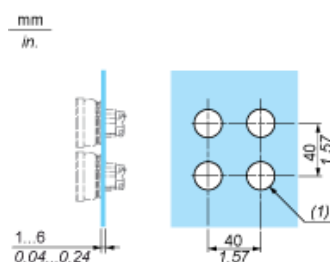
|  |  |
|--|--|
| Green Premium product  | Green Premium product  |
| Compliant - since 0627 - Schneider Electric declaration of conformity  | Compliant - since 0627 - Schneider Electric declaration of conformity  |
| Reference not containing SVHC above the threshold  | Reference not containing SVHC above the threshold  |
| Available  | Available  |
| Available  | Available  |
| WARNING: This product can expose you to chemicals including:   | WARNING: This product can expose you to chemicals including:   |
| Nickel compounds, which is known to the State of California to cause cancer, and   | Nickel compounds, which is known to the State of California to cause cancer, and   |
| Di-isodecyl phthalate (DIDP), which is known to the State of California to cause birth defects or other reproductive harm. | Di-isodecyl phthalate (DIDP), which is known to the State of California to cause birth defects or other reproductive harm. |
| For more information go to <a href="http://www.p65warnings.ca.gov">www.p65warnings.ca.gov</a>                              | For more information go to <a href="http://www.p65warnings.ca.gov">www.p65warnings.ca.gov</a>                              |

## Dimensions



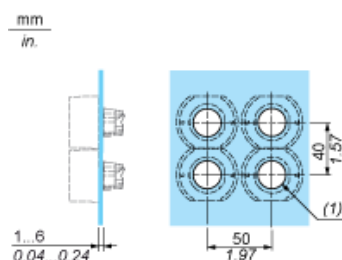
## Installation on Flat Surface

### Without Protective Guard



(1)  $\varnothing 22.5$  mm recommended ( $\varnothing 22.3_0^{+0.4}$ ) /  $\varnothing 0.89$  in. recommended ( $\varnothing 0.88_0^{+0.016}$ )

### With Protective Guard



(1)  $\varnothing 22.5$  mm recommended ( $\varnothing 22.3_0^{+0.4}$ ) /  $\varnothing 0.89$  in. recommended ( $\varnothing 0.88_0^{+0.016}$ )

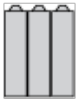
## Electrical Composition Corresponding to Code C1



### Electrical Composition Corresponding to Code C2

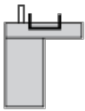


### Electrical Composition Corresponding to Codes C9, C11, SF1 and SR1

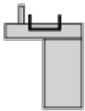


### Electrical Composition Corresponding to Code C15

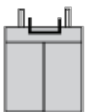
1 N/O



1 N/C



1 N/O + N/C or 1 N/O + N/O or 1 N/C + N/C



### Legend

Single contact



Double contact



Light block



Possible location

