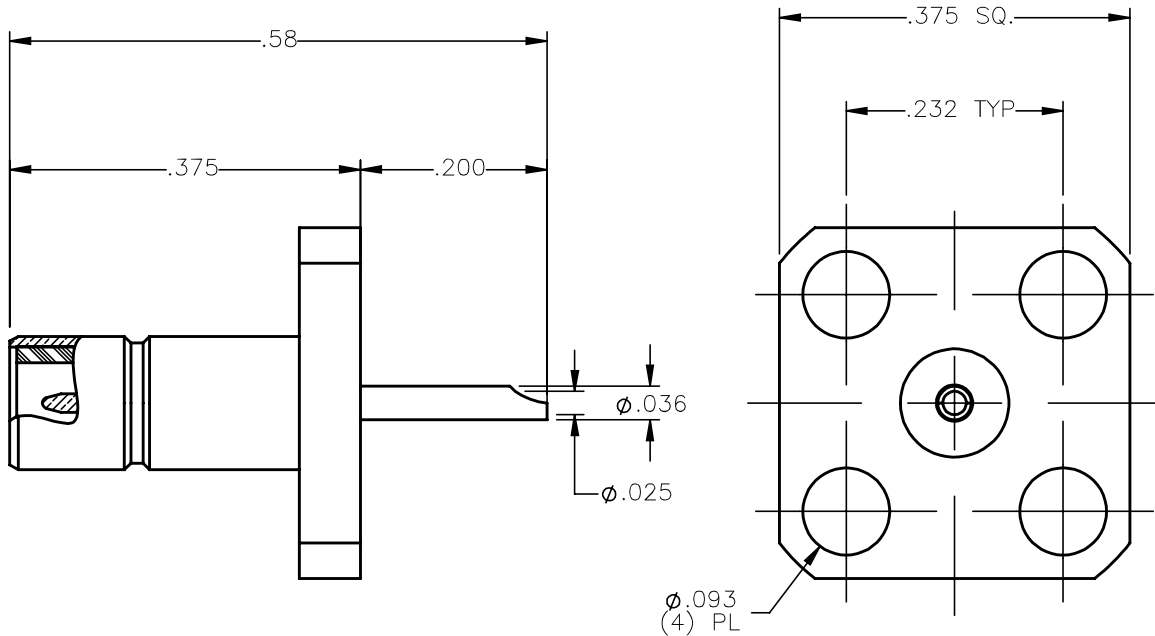


REVISIONS			
REV.	DESCRIPTION	DATE	APPROVED
A	INITIAL RELEASE	12/03/14	N.D.



NOTES:

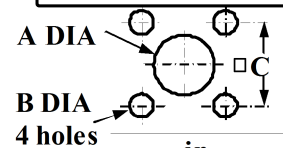
MATERIALS:

1. BODY & CONTACT = BRASS PER ASTM B16, ALLOY C36000, TEMPER H02.
2. INSULATOR = VIRGIN WHITE TEFLON PER ASTM D1710, GRADE 1, TYPE I, CLASS "B".



FINISHES:

1. BODY = GOLD PLATE PER ASTM B488-01, TYPE II, 30 $\mu$ in MIN, GRADE C OVER 100 TO 200 $\mu$ in COPPER STRIKE PER MIL-C-14550.
2. CONTACT = GOLD PLATE PER ASTM B488-01, TYPE II, 50 $\mu$ in MIN, GRADE C, OVER 100 TO 200 $\mu$ in STRESS FREE SULFAMATE NICKEL PER QQ-N-290.

**PANEL CUT OUT**



	in	
	Maxi	mini
A	.119	.117
B	.099	.095
C	.233	.231

UNLESS OTHERWISE SPECIFIED DIMENSIONS ARE IN INCHES TOLERANCES ON	DWN: N.D.	DATE: 12/03/14	 Property of Radiall This document cannot be reproduced or communicated to a third party without prior written permission of RADIALL.		
	CHKD: D.N.	DATE: 12/03/14			
DECIMAL	ANGLE	APVD: J.M.	<b>SMB STRAIGHT MALE JACK (4) HOLE FLANGE MOUNT PANEL RECEPTACLE</b>		
		DATE: 12/03/14			
REFERENCE:	MATERIALS AND FINISHES: SEE NOTES	SIZE: A	FSCM NO.: 19505	DWG NO.: 2484-1511-000	REV: A
ORIGINATED: N.D. DATE: 12/03/14		SCALE: 5:1	THIRD ANGLE PROJECTION		SHEET 1 OF 1

2484-1511-000