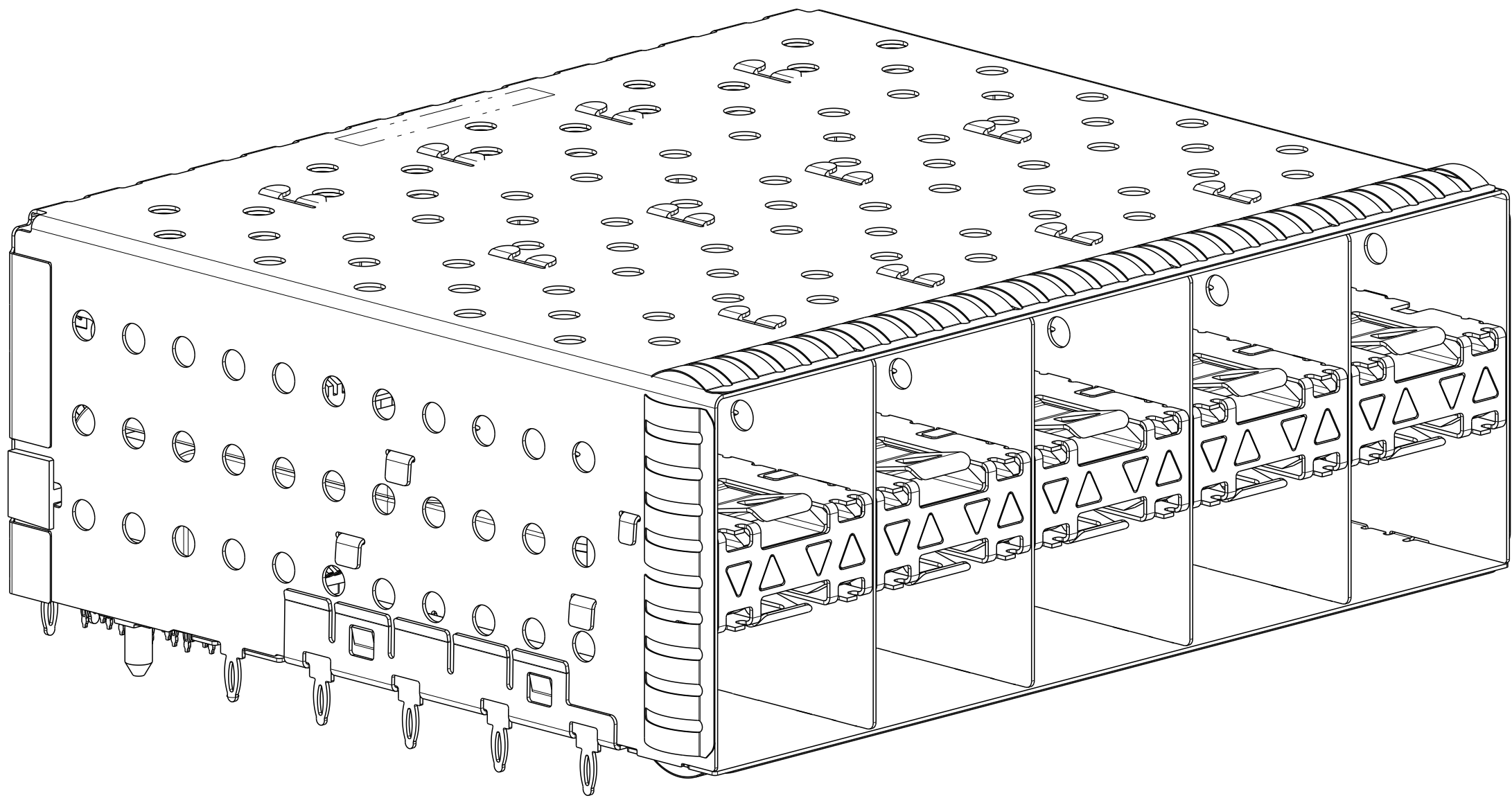
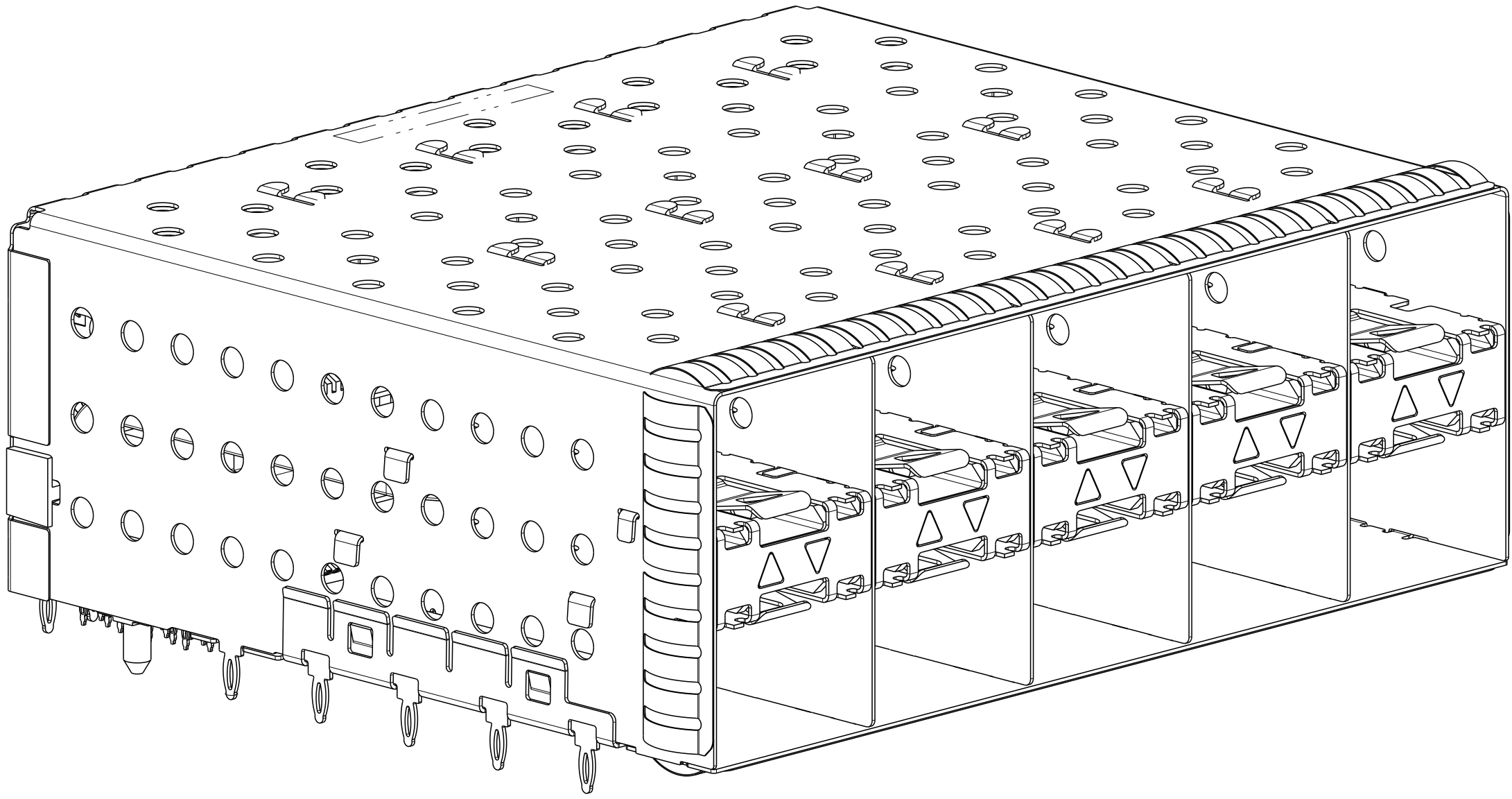


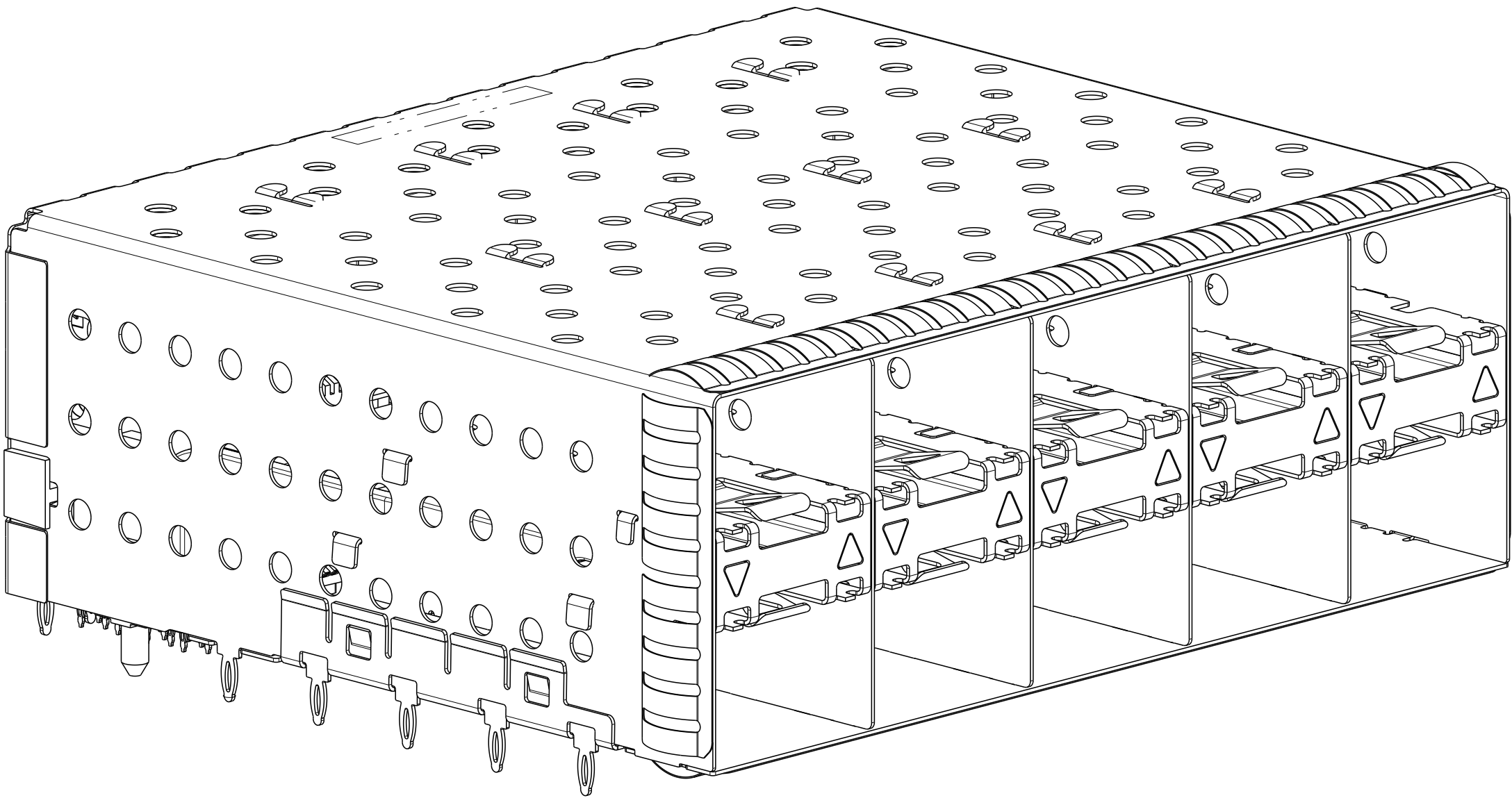
LOC		DIST		REVISIONS			
P	LTR	DESCRIPTION		DATE	DWN	APVD	
-		SEE SHEET 1		-	-	-	



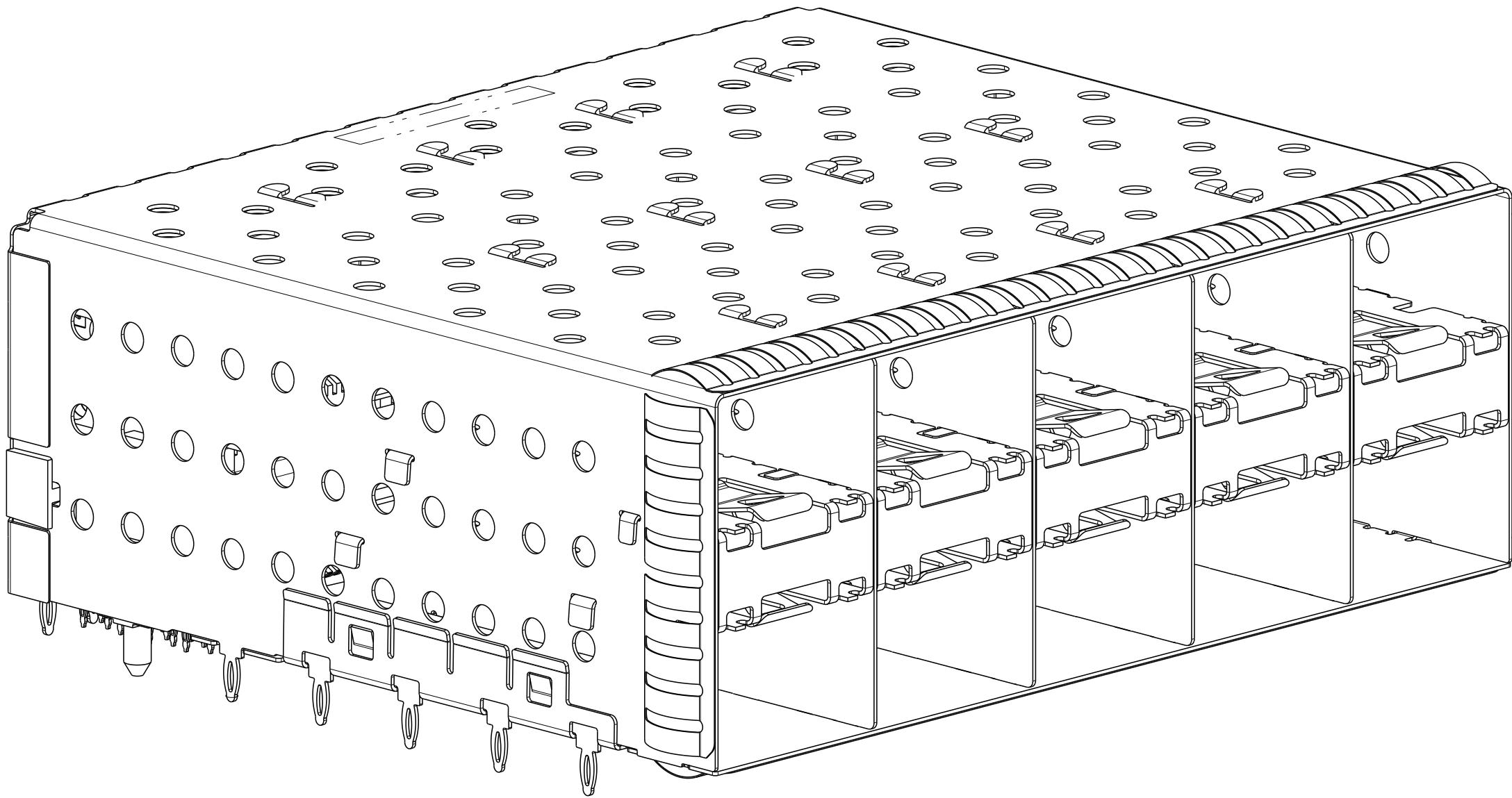
2132403-5 AND 1-2132403-5
SCALE 3:1



2132403-6 AND 1-2132403-6
SCALE 3:1



2132403-7 AND 1-2132403-7
SCALE 3:1



2132403-8 AND 1-2132403-8
SCALE 3:1

THIS DRAWING IS A CONTROLLED DOCUMENT.
DIMENSIONING AND TOLERANCING
PER ASME Y14.5M-2009

DIMENSIONS:
mm

MATERIAL

TOLERANCES UNLESS
OTHERWISE SPECIFIED:

0 PLC ±0.1
1 PLC ±0.1
2 PLC ±0.1
3 PLC ±
4 PLC ±
ANGLES ±
FINISH

DWN
C. VALENTINE
CHK
J. PETERSON
APVD
J. PETERSON

06JAN2010
06JAN2010
06JAN2010

PRODUCT SPEC.
108-2331
APPLICATION SPEC
114-13219

WEIGHT
-

CUSTOMER DRAWING

NAME
CAGE AND PT CONNECTOR ASSEMBLY,
WITH EMI SPRINGS,
PRESS FIT, 2X5, STACKED SFP+

SIZE
A1

CAGE CODE
00779

DRAWING NO
C=2132403

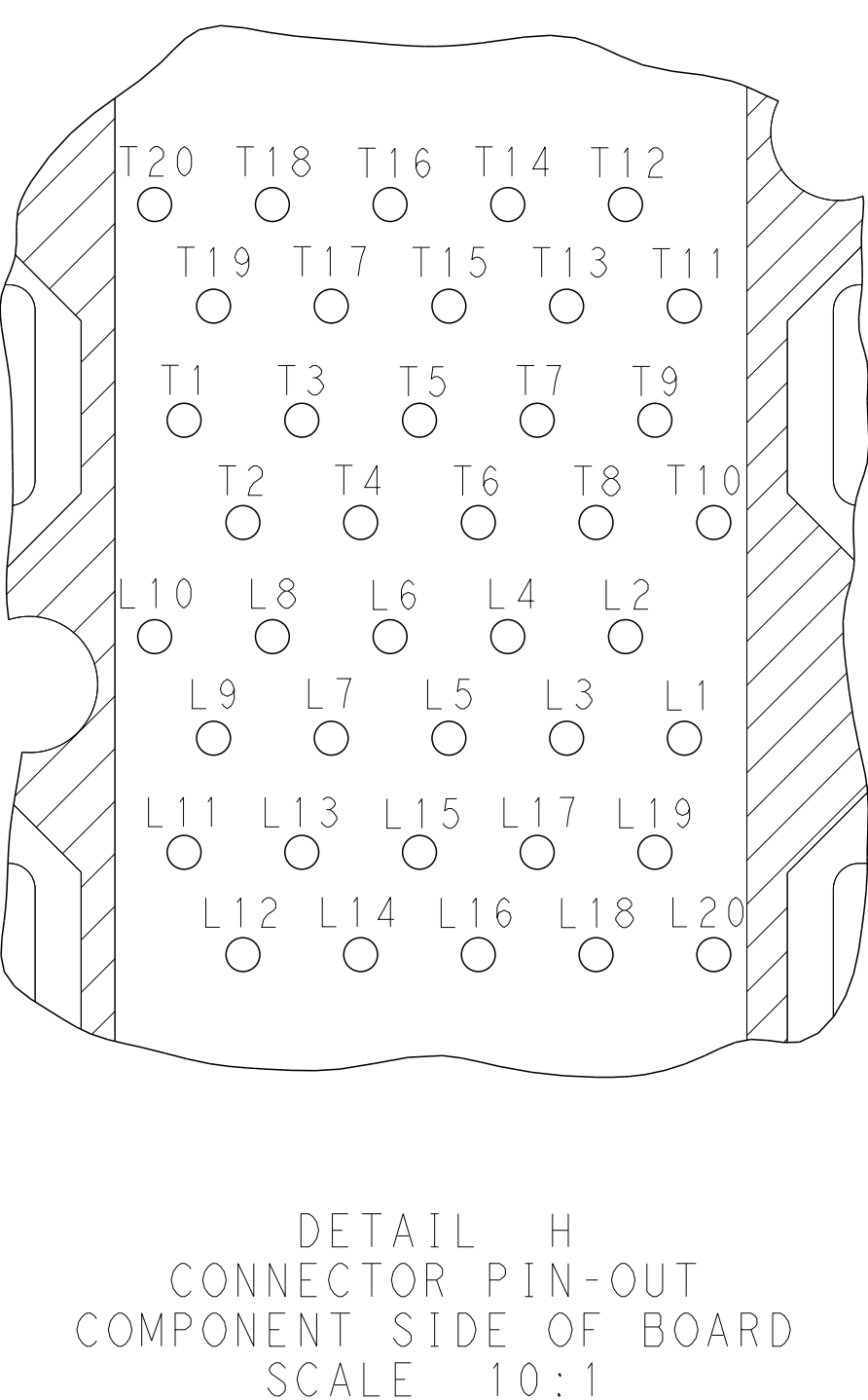
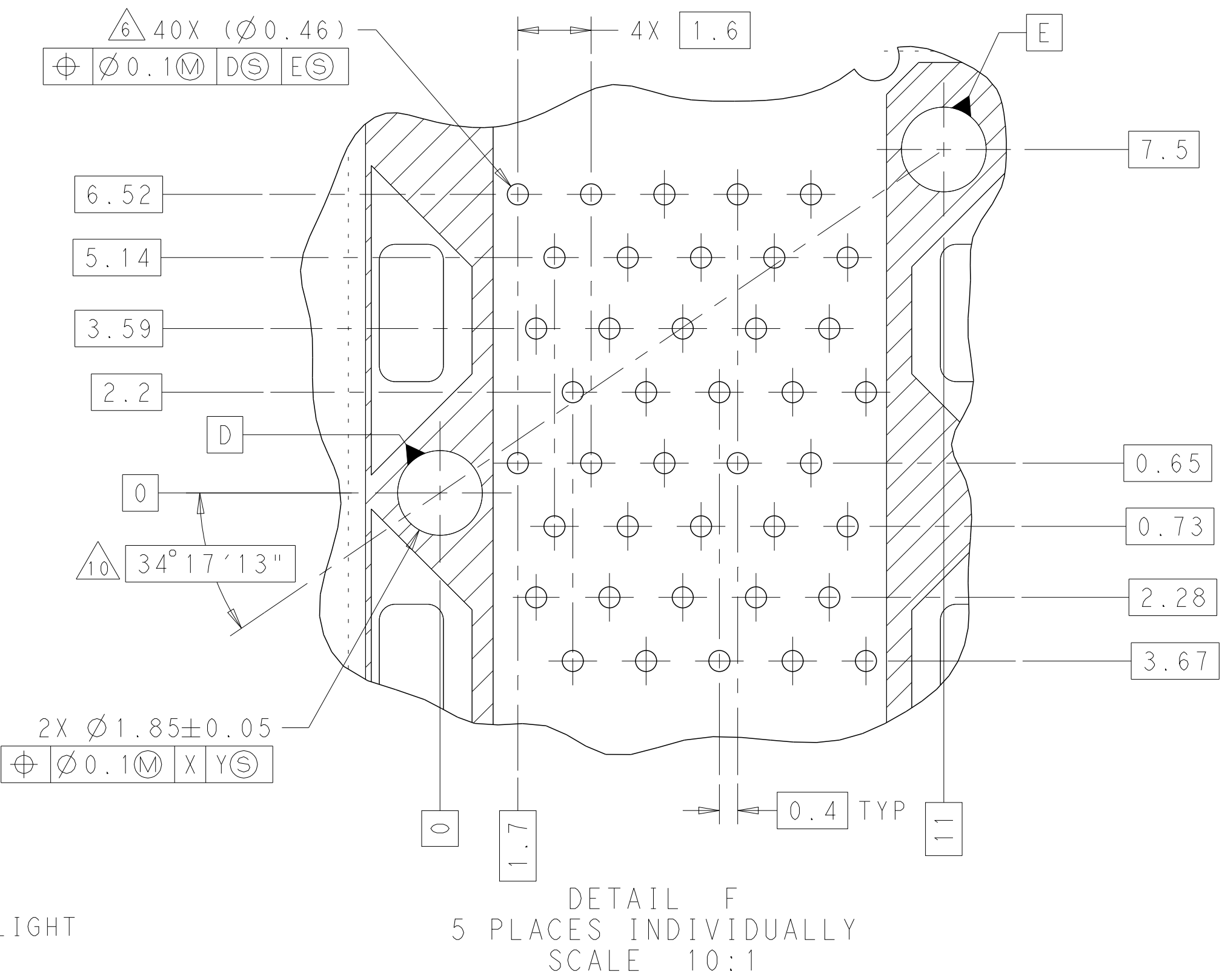
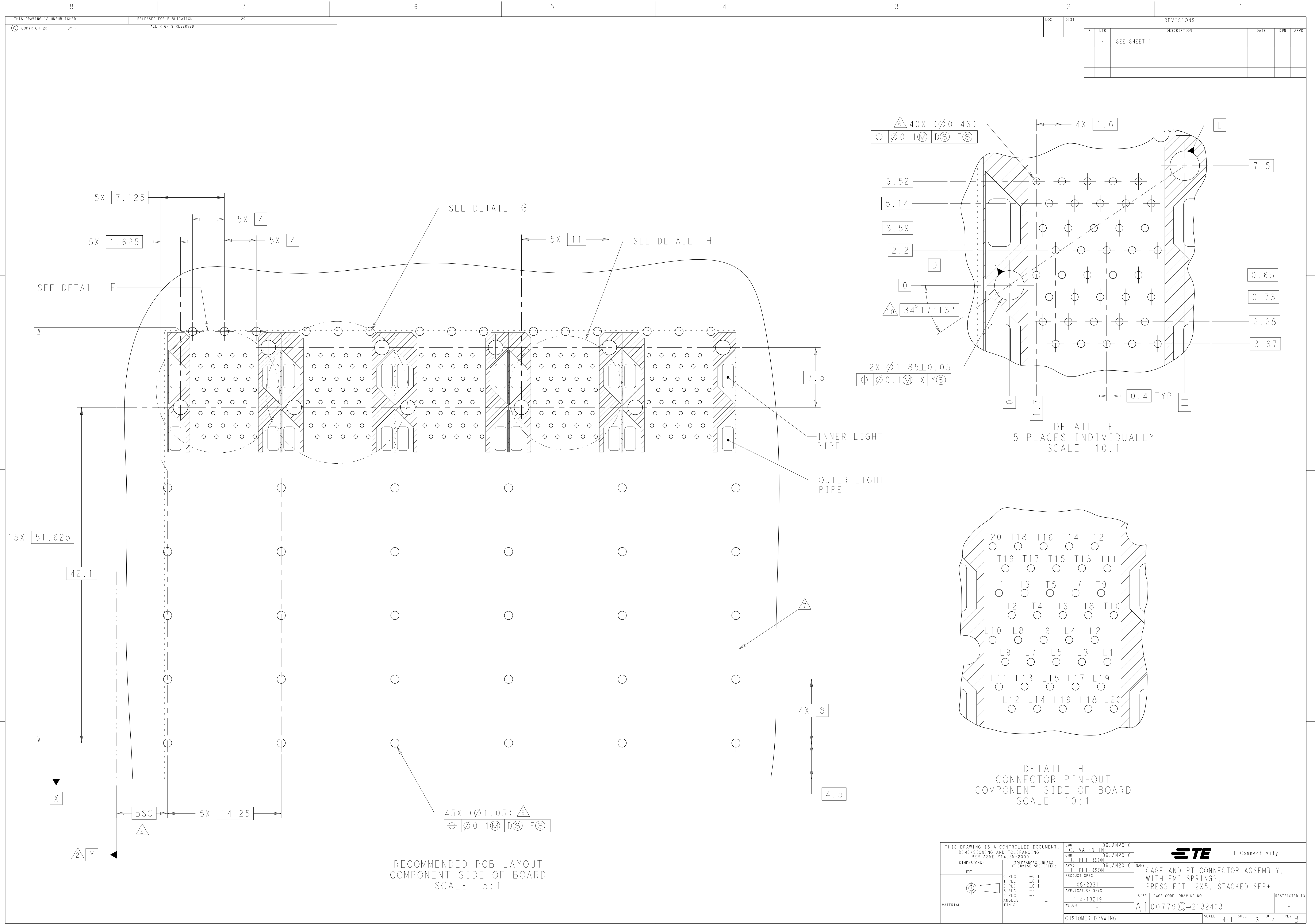
RESTRICTED TO
-

SCALE
4:1

SHEET
2

OF
4

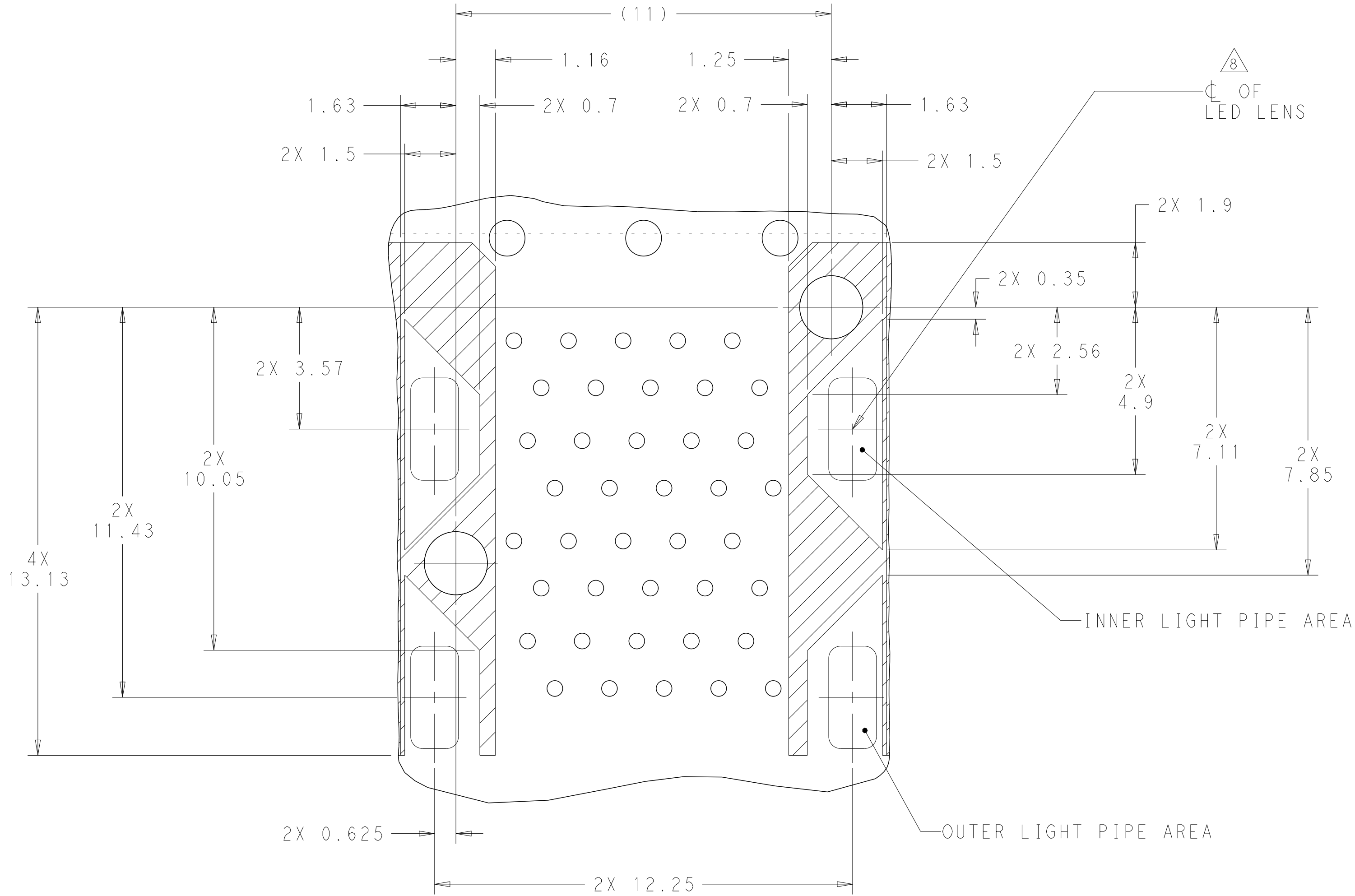
REV
B



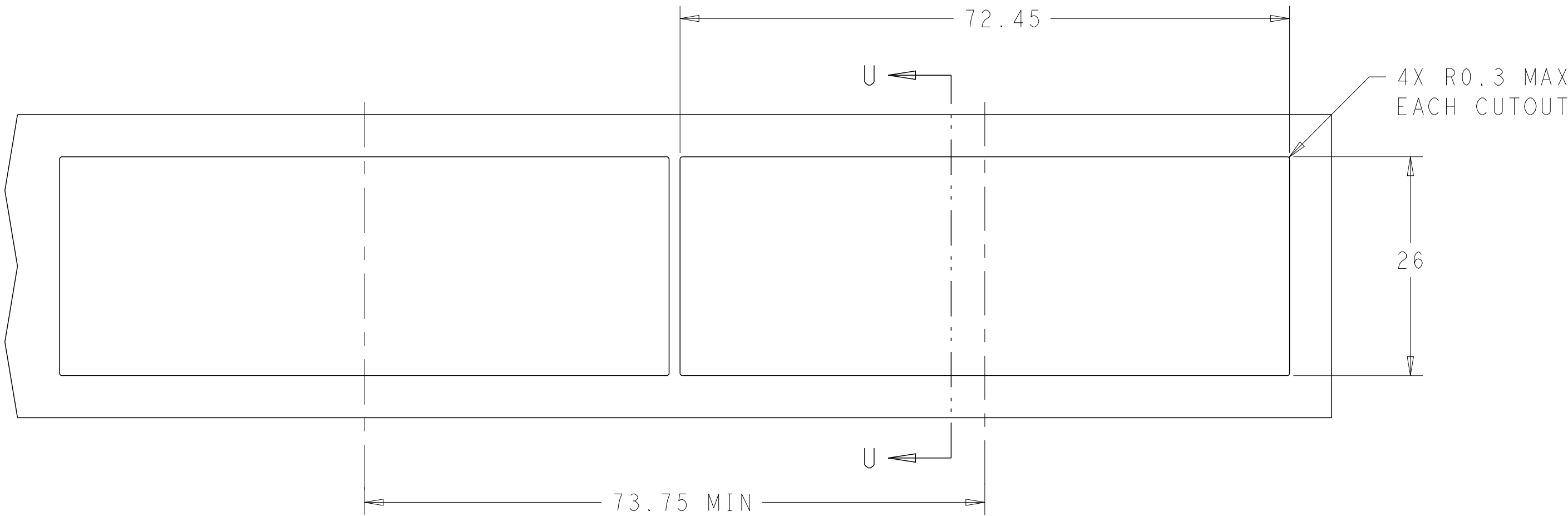
RECOMMENDED PCB LAYOUT
COMPONENT SIDE OF BOARD
SCALE 5:1

THIS DRAWING IS A CONTROLLED DOCUMENT. DIMENSIONING AND TOLERANCING PER ASME Y14.5M-2009 OTHERWISE SPECIFIED:		OWN C. VALENTINE 06JAN2010	TE Connectivity	
		CHK J. PETERSON 06JAN2010		
DIMENSIONS:		APVD J. PETERSON 06JAN2010	NAME	
mm		PRODUCT SPEC	CAGE AND PT CONNECTOR ASSEMBLY, WITH EMI SPRINGS, PRESS FIT, 2X5, STACKED SFP+	
0 PLC ±0.1 1 PLC ±0.1 2 PLC ±0.1 3 PLC ± 4 PLC ± ANGLES ± FINISH ±		108-2331 APPLICATION SPEC	SIZE CAGE CODE DRAWING NO	
MATERIAL		114-13219	RESTRICTED TO	
		WEIGHT	A100779C=2132403	
		CUSTOMER DRAWING	SCALE 4:1 SHEET 3 OF 4 REV B	

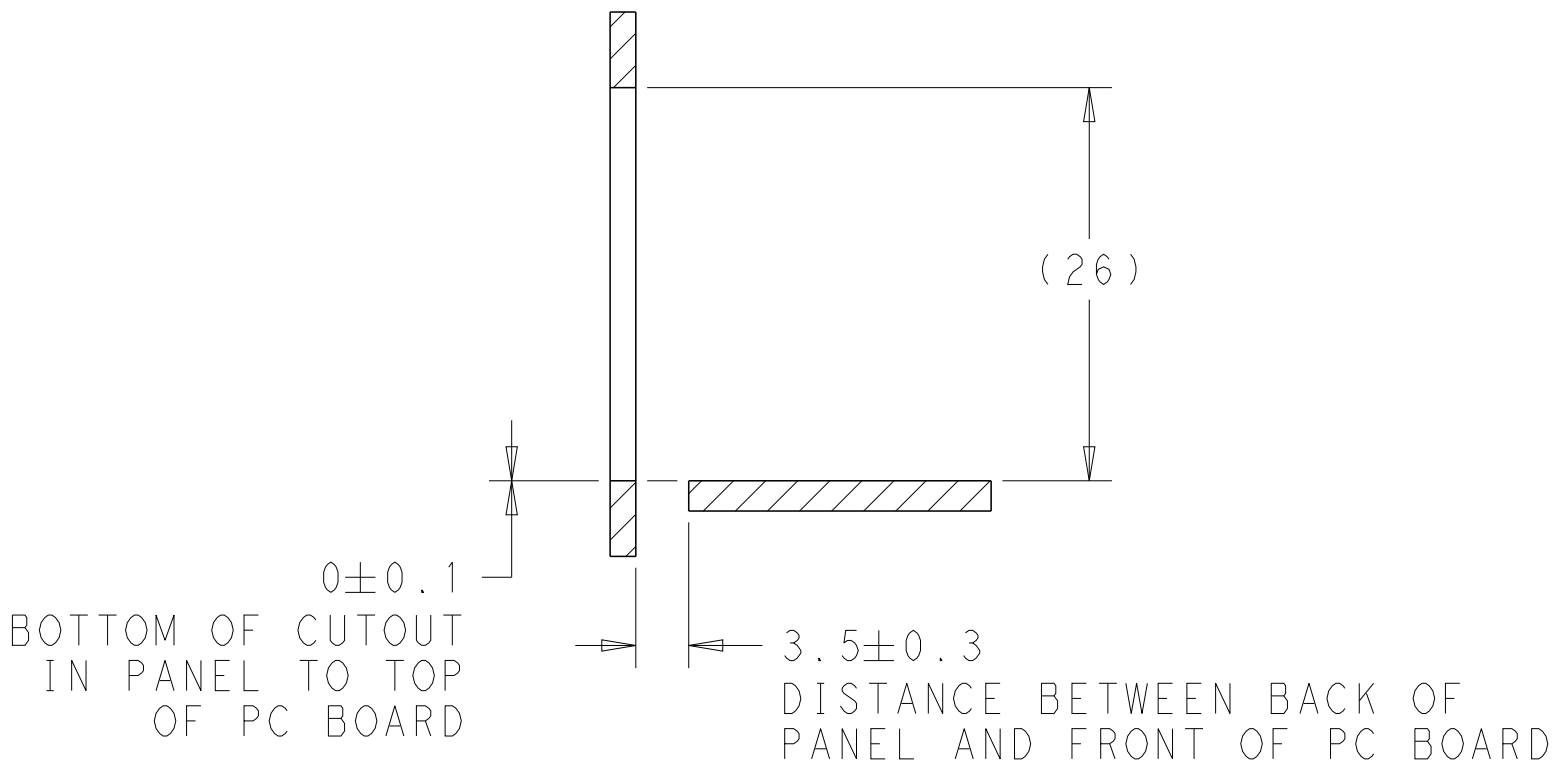
LOC		DIST	REVISIONS				
P	LTR	DESCRIPTION			DATE	DWN	APVD
-	-	SEE SHEET 1			-	-	-



DETAIL G
CONNECTOR HOUSING
KEEPOUT ZONE
SCALE 10:1



RECOMMENDED PANEL CUTOUT
AND PC BOARD, PANEL POSITION
SCALE 2:1



SECTION U-U

THIS DRAWING IS A CONTROLLED DOCUMENT. DIMENSIONING AND TOLERANCING PER ASME Y14.5M-2009		DWN C. VALENTINE CHK J. PETERSON APVD J. PETERSON	06JAN2010 06JAN2010 06JAN2010	TE Connectivity	
DIMENSIONS: mm		TOLERANCES UNLESS OTHERWISE SPECIFIED:		NAME CAGE AND PT CONNECTOR ASSEMBLY, WITH EMI SPRINGS, PRESS FIT, 2X5, STACKED SFP+	
0 PLC ±0.1 1 PLC ±0.1 2 PLC ±0.1 3 PLC ± 4 PLC ± ANGLES ± FINISH		PRODUCT SPEC 108-2331 APPLICATION SPEC 114-13219 WEIGHT -		SIZE CAGE CODE DRAWING NO A100779	
MATERIAL		CUSTOMER DRAWING		RESTRICTED TO -	
		SCALE 4:1		SHEET 4 OF 4	
				REV B	