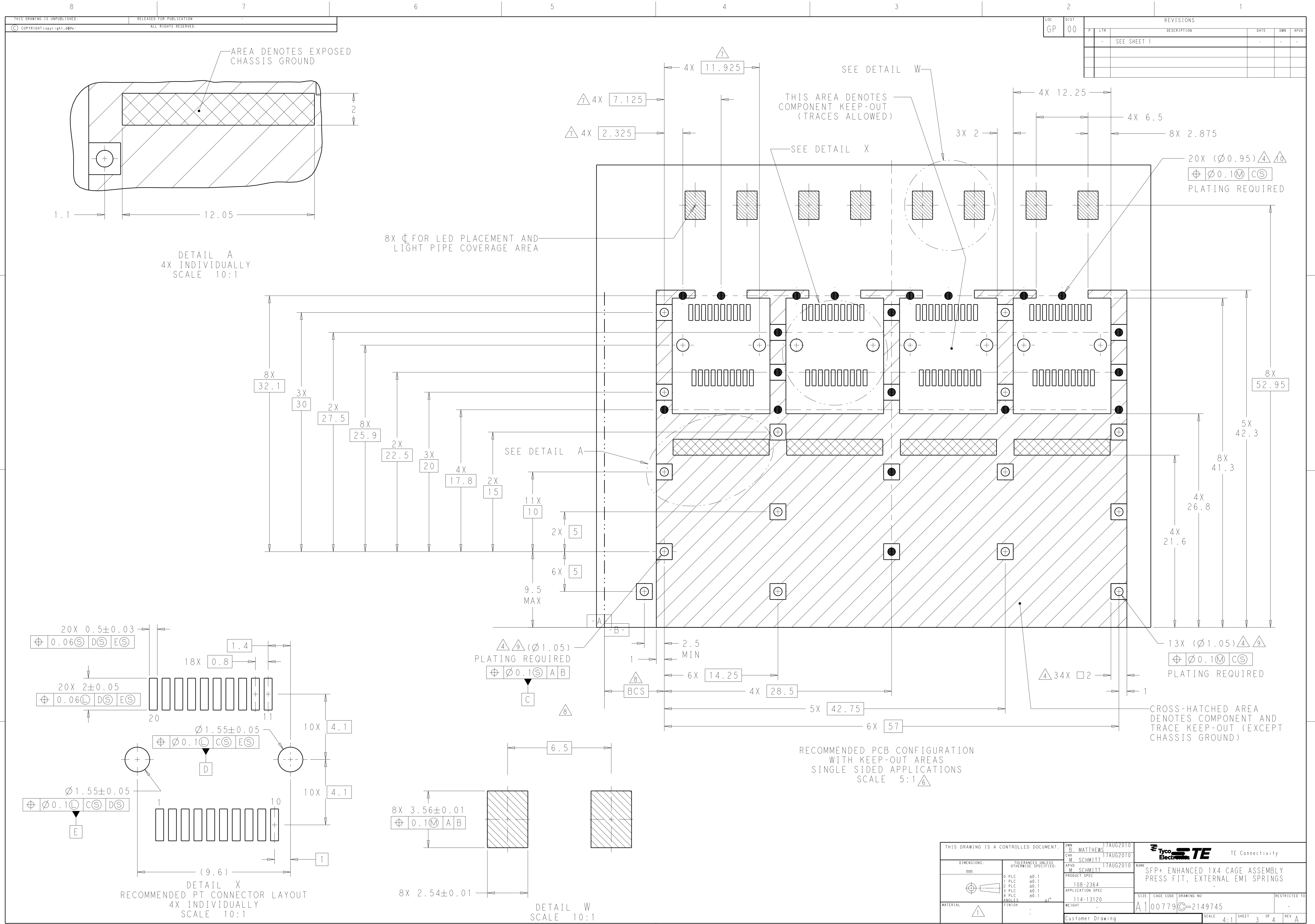


LOC		DIST		REVISONS			
GP		00		DESCRIPTION	DATE	DWN	APVD
				SEE SHEET 1	-	-	-

THIS DRAWING IS A CONTROLLED DOCUMENT.				DWN	B. MATTHEWS	17AUG2010	Tyco Electronics TE Connectivity	
				CHK	M. SCHMITT	17AUG2010		
				APVD	M. SCHMITT	17AUG2010	NAME	
				PRODUCT SPEC			SFP+ ENHANCED 1X4 CAGE ASSEMBLY	
				APPLICATION SPEC			PRESS FIT, EXTERNAL EMI SPRINGS	
				114-13120			SIZE	
				WEIGHT			CAGE CODE	
				Customer Drawing			DRAWING NO	
							RESTRICTED TO	



LOC		DIST		REVISONS			
GP	00	P	LTR	DESCRIPTION	DATE	DWN	APVD
		-		SEE SHEET 1	-	-	-

THIS DRAWING IS A CONTROLLED DOCUMENT.

DIMENSIONS:
mm

MATERIAL

TOLERANCES UNLESS OTHERWISE SPECIFIED:

0 PLC ±0.1

1 PLC ±0.1

2 PLC ±0.1

3 PLC ±0.1

4 PLC ±0.1

ANGLES ±1°

FINISH

OWN B. MATTHEWS 17AUG2010

CHK M. SCHMITT 17AUG2010

APVD W. SCHMITT 17AUG2010

PRODUCT SPEC

108-2364

APPLICATION SPEC

114-13120

WEIGHT

Customer Drawing

TE Connectivity

NAME

SFP+ ENHANCED 1X4 CAGE ASSEMBLY PRESS FIT, EXTERNAL EMI SPRINGS

SIZE

CAGE CODE

DRAWING NO

RESTRICTED TO

A100779

C=2149745

SCALE

4:1

SHEET

3

OF

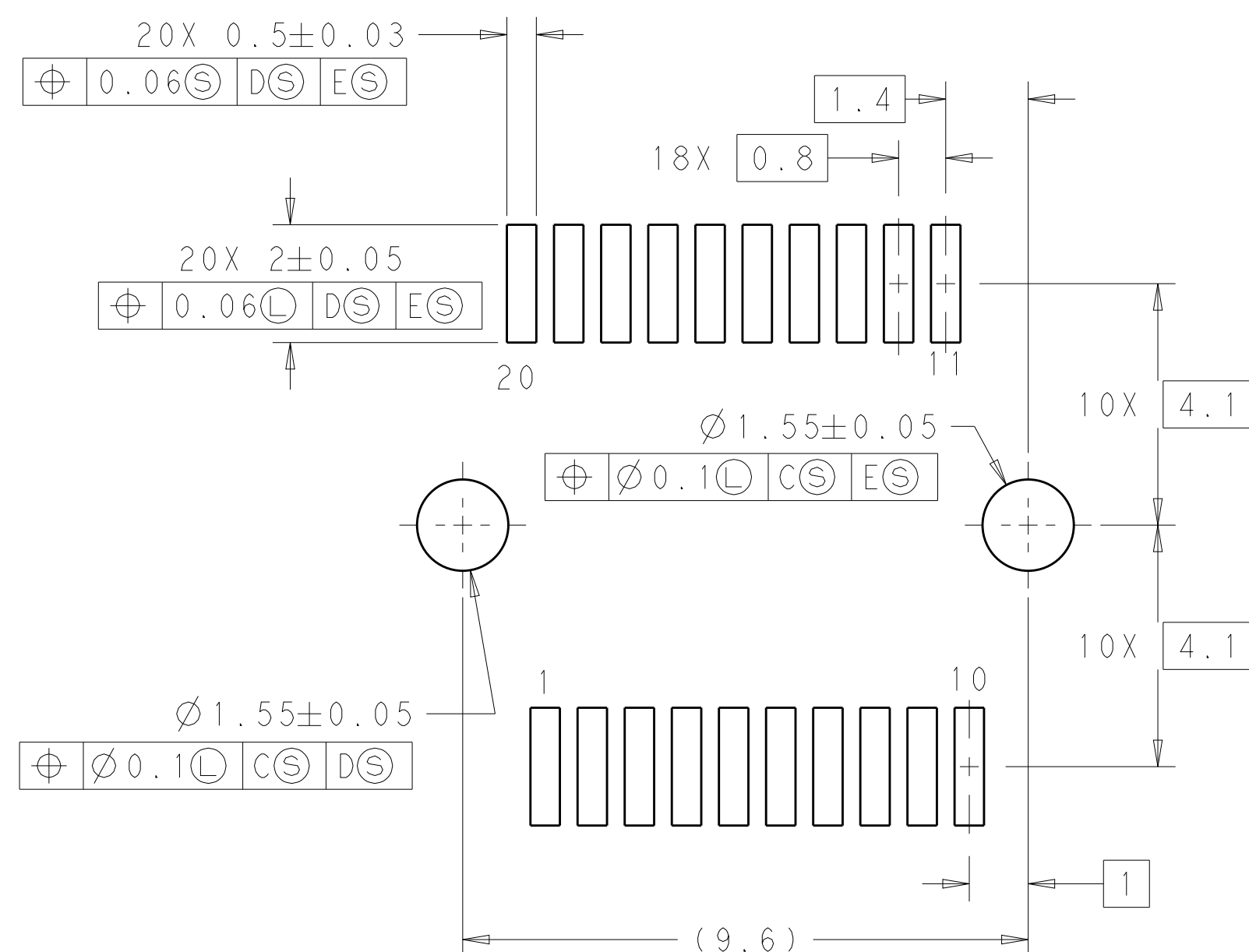
4

REV

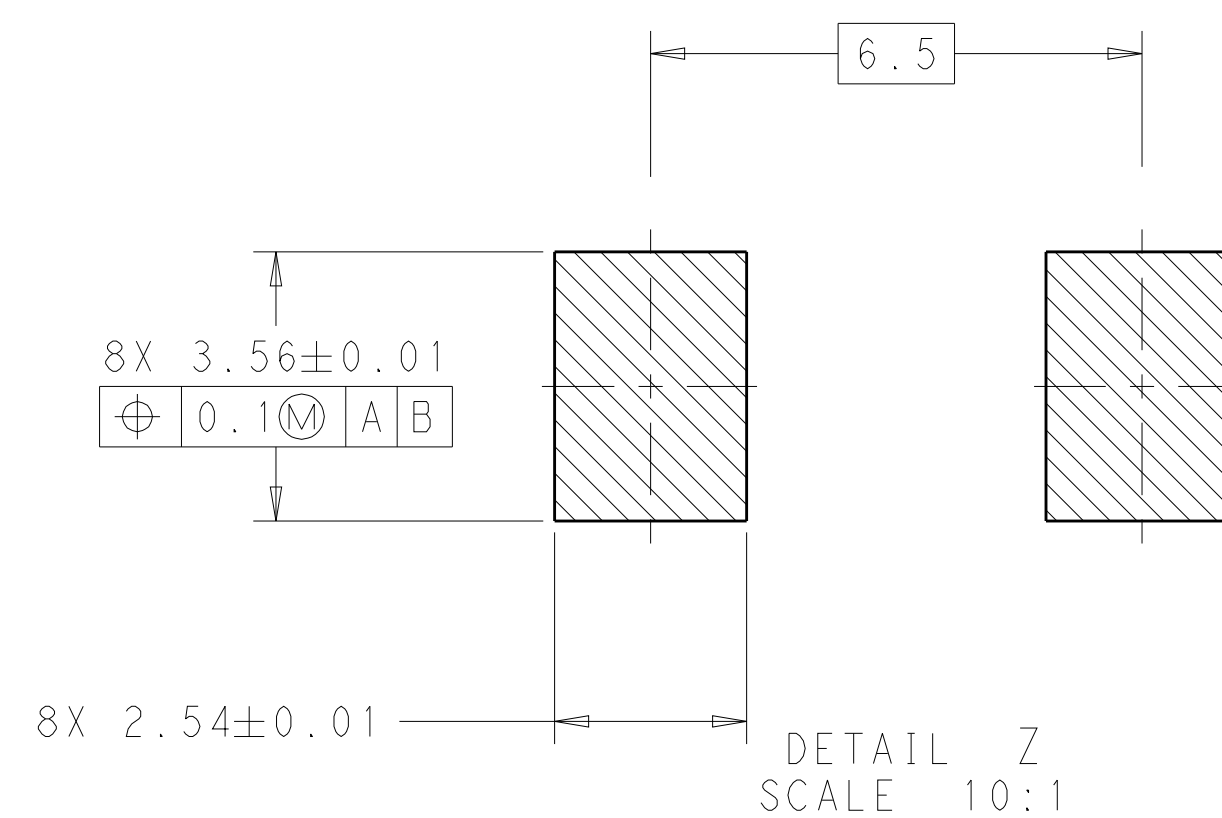
A




DETAIL B
4X INDIVIDUALLY
SCALE 10:1




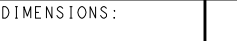

DETAIL Y
RECOMMENDED PT CONNECTOR LAYOUT
8X INDIVIDUALLY
SCALE 10:1



DETAIL Z
SCALE 10:1

RECOMMENDED PCB CONFIGURATION
WITH KEEP-OUT AREAS
BELLY TO BELLY APPLICATIONS
SCALE 5:1 

—CROSS-HATCHED AREA
DENOTES COMPONENT
AND TRACE KEEP-OUT
(EXCEPT CHASSIS
GROUND)

THIS DRAWING IS A CONTROLLED DOCUMENT.		DWN CHK MTH MTH	17AUG2010 17AUG2010 17AUG2010	 TE Connectivity	
DIMENSIONS: mm		TOLERANCES UNLESS OTHERWISE SPECIFIED: 0 PLC ±0.1 1 PCL ±0.1 2 PCL ±0.1 3 PCL ±0.1 4 PCL ±0.1		NAME SFP+ ENHANCED 1X4 CAGE ASSEMBLY PRESS FIT, EXTERNAL EMI SPRINGS	
		PRODUCT SPEC 108-2364		APPLICATION SPEC 114-13120	
MATERIAL 		FINISH -		SIZE A1	
		WEIGHT -		CAGE CODE 00779	
		CUSTOMER DRAWING -		DRAWING NO C=2149745	
		SCALE A:1		SHEET 1 OF 1	
		REV -		RESTRICTED TO -	