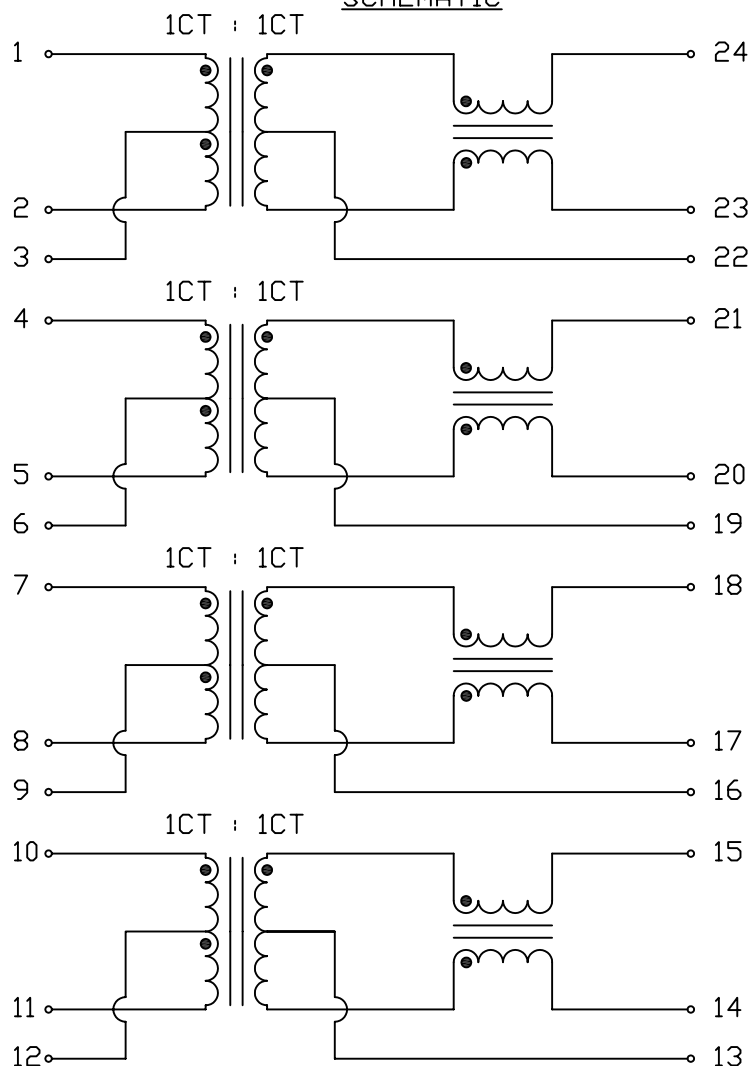


THE INFORMATION CONTAINED HEREIN IS CONSIDERED  
"PROPRIETARY" TO BEL FUSE INC. AND SHALL NOT BE  
COPIED, REPRODUCED OR DISCLOSED WITHOUT THE  
WRITTEN APPROVAL OF BEL FUSE INC.



# SCHEMATIC

# ELECTRICAL CHARACTERISTICS @25°C



URNS RATIO	1CT : 1CT
PHASE	1 TO 24, 4 TO 21, 7 TO 18, 10 TO 15 IN PHASE
QCL :	350uH MIN. AT 100kHz, 100mV (1-2), (4-5), (7-8), (10-11) WITH 8mA DC BIAS, FROM 0 -70°C
INSERTION LOSS	1.0dB MAX. @ 1MHz TO 100MHz 1.5dB MAX. @ 125MHz
RETURN LOSS	18dB MIN. @ 1-30MHz MEASURED UNDER A 100 Ω I/O 15dB MIN. @ 60MHz 12dB MIN. @ 80MHz 10dB MIN. @ 100MHz
CROSSTALK	10-100 MHz 35 dB MIN.
COMMON TO COMMON REJECTION	30 dB MIN. AT 100kHz TO 155MHz
HIPOT	PER HAND-WORK-03

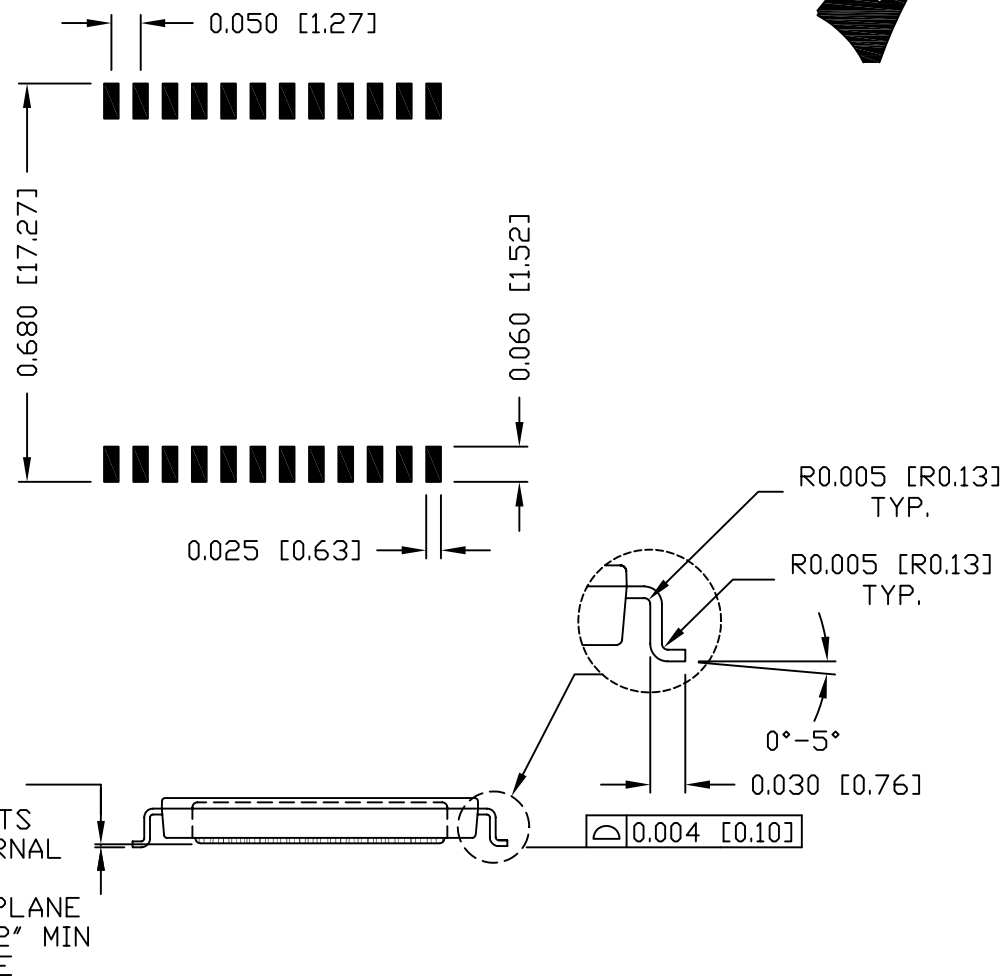
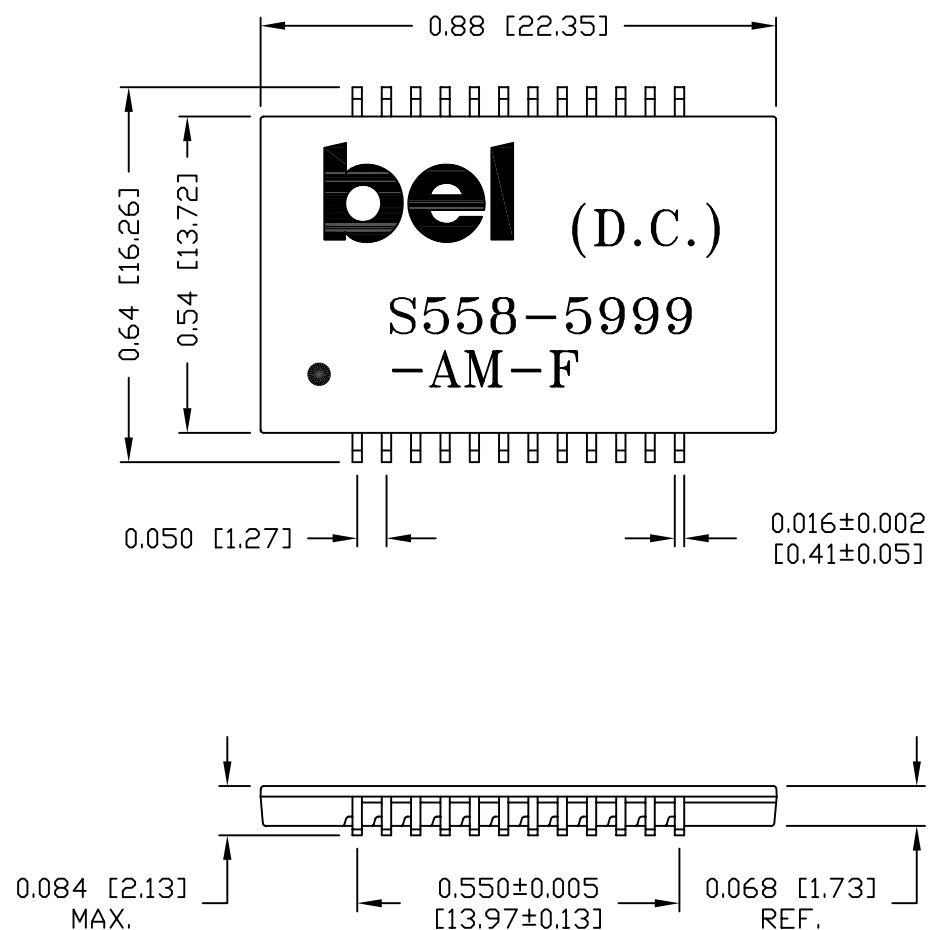
ORIGINATED BY	DATE	TITLE	PART NO. / DRAWING NO.	STANDARD DIM.	[ ] METRIC DIM. AS REF.	REV. :	PAGE :
Alice Pang	2015-01-28	ELECTRICAL SPECIFICATION S558-5999-AM-F	X5585999AM-F	TOL. IN INCH	UNIT : INCH [mm]	B	2
DRAWN BY	DATE		FILE NAME	.X	SCALE : N/A		
ZC Guo	2015-01-28		X5585999AMF.B.DWG	.XX	SIZE : A4		
				.XXX			



THE INFORMATION CONTAINED HEREIN IS CONSIDERED  
"PROPRIETARY" TO BEL FUSE INC. AND SHALL NOT BE  
COPIED, REPRODUCED OR DISCLOSED WITHOUT THE  
WRITTEN APPROVAL OF BEL FUSE INC.

# SUGGESTED PCB PAD LAYOUT

RoHS



## NOTES:

- STANDARD MARKING REFER TO DOC. HAND-WORK-04.
- PACKAGE CODE: "RJS001".

REV. : B	PAGE : 3
<p>POWER   PROTECT   CONNECT</p>	

ORIGINATED BY	DATE	TITLE	PART NO. / DRAWING NO.	STANDARD DIM. [ ] METRIC DIM. AS REF.	
Lawrence Tsang	2015-01-28	MECHANICAL DRAWING S558-5999-AM-F	X5585999AM-F	TOL. IN INCH	UNIT : INCH [mm]
DRAWN BY	DATE		FILE NAME	.X	SCALE : N/A
ZC Guo	2015-01-28		X5585999AMF.B.DWG	.XX ±0.01	SIZE : A4
				.XXX ±0.005	