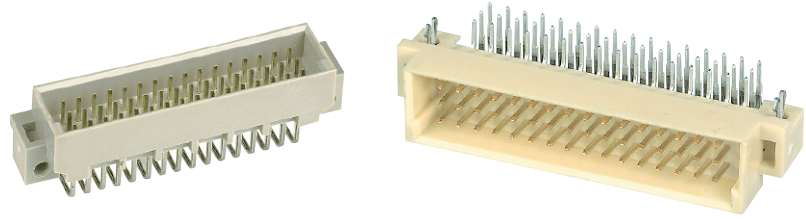


Number of contacts

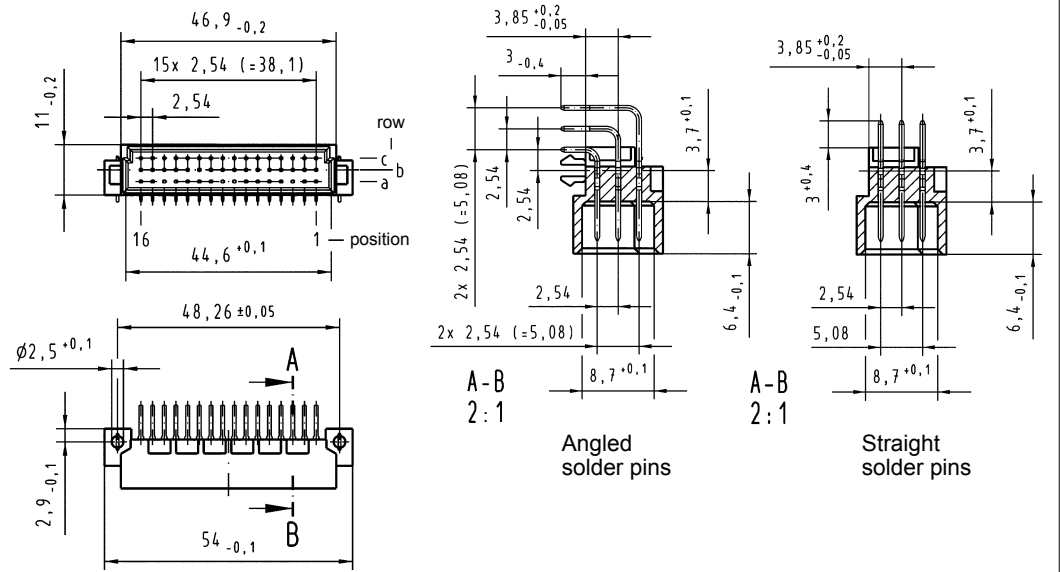
48, 32, 16



Male connectors

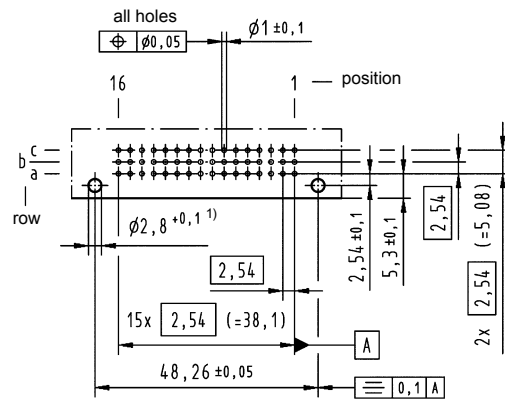
Identification Drawing Dimensions in mm

Dimensions

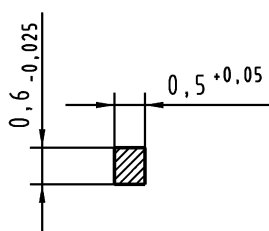


Board drillings

Mounting side



Cross section of solder terminations



Cross area (A) of contacts row a, b, c: A = 0.29 - 0.33 mm²

DIN Signal up to 2 A

01
30

¹⁾ Recommendation for variants with clip: Drillings can be enlarged up to 3.1 mm ø to reduce standard mounting force