

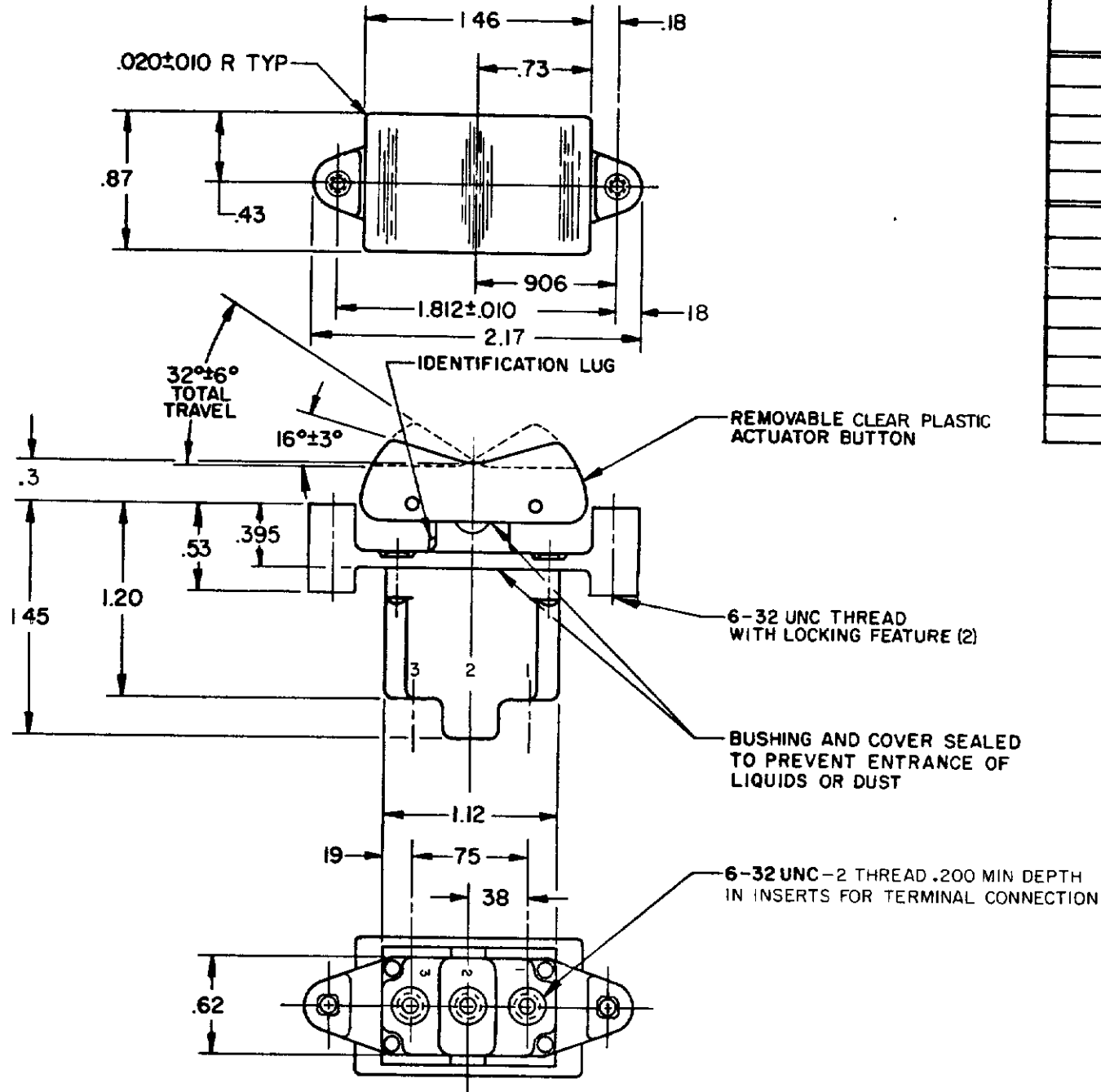
MICRO SWITCH
 FREEPORT ILLINOIS U.S.A.
 A DIVISION OF HONEYWELL
 FED MFG CODE 91929

**SWITCH-TOGGLE
 FLUSH KEY**

CATALOG LISTING
1TP19 SERIES
 CHART 1

THIS DRAWING COVERS A PROPRIETARY ITEM AND IS THE PROPERTY OF MICRO SWITCH A DIVISION OF HONEYWELL THIS DRAWING IS NOT TO BE COPIED OR USED WITHOUT THE APPROVAL OF MICRO SWITCH

CATALOG LISTING
1TP19 SERIES CHART 1
 PAGE 1 OF 1
 RELEASE NO CO-78465 REPLACES 1TP19 SERIES
 ISSUE **M**
 1
 CHECK
 REVISIONS
 CHECK
 28 JUN 94
 KAG
 CHECK
 10 JUN 94
 SAD
 DRAWN



CATALOG LISTING	CIRCUIT MADE WITH BUTTON DEPRESSED ON			CURRENT CAPACITY (AMPS)								
	LUG SIDE (1-2)	CENTER (1-2)	OPPOSITE LUG (2-3)	RESISTIVE LOAD				LAMP LOAD		INDUCTIVE LOAD		
				DC VOLTS	AC VOLTS							
ITP19-1	ON	OFF	ON	28	125	250	125	250	28 VDC	125 VAC	28 VDC	125 VAC
ITP19-2	OFF	NONE	ON									
ITP19-3	ON	NONE	ON	20	.75	.5	15	6	5	3	15	10
ITP19-21	NONE	OFF	ON									
ITP19-31	NONE	ON	ON									
ITP19-4	MOM OFF	NONE	ON									
ITP19-5	MOM ON	OFF	ON									
ITP19-6	MOM ON	NONE	OFF									
ITP19-7	MOM ON	OFF	MOM ON									
ITP19-8	MOM ON	NONE	ON	15	75	5	15	6	4	2	10	7
ITP19-51	NONE	ON	MOM ON									
ITP19-61	MOM ON	OFF	NONE									

THIRD ANGLE PROJECTION

SCALE FULL

DO NOT SCALE PRINT

TOLERANCES
 APPLY TO DESIGN UNITS. CONVERSIONS ARE ONLY FOR REFERENCE UNLESS NOTED. TOLERANCES ARE:

DIM	TOL	DIM	TOL
mm	mm/in	in	mm/in
NO PLACES	X	1/04	
ONE PLACE	X X	0.4/018	X X 0.8/03
TWO PLACES	X X X	0.16/008	X X X 0.38/015
THREE PLACES	X X X X	0.13/005	X X X X 0.13/005

DESIGN UNITS SI METRIC US CUSTOMARY

RAW MATERIAL-COMMERCIAL STANDARD
 MICRO SWITCH STANDARDS APPLY
 DIMENSIONS ARE TO BE MET BEFORE
 PROTECTIVE COATINGS ARE APPLIED

WEIGHT

- NOTES
- 1 - MICRO SWITCH CATALOG LISTING MARKED ON SIDE OF SWITCH
 - 2 - THESE SWITCHES WILL WITHSTAND TEMPERATURE OF 160°F
 - 3 - APPLIES ONLY TO "ON" AND "MOMENTARY ON" POSITIONS
 - 4 - 6-32 UNC - 2 X .280 REF STEEL PAN HEAD TERMINAL SCREWS, SPRING LOCKWASHERS, AND WASHERS (SEMS) FURNISHED UNASSEMBLED ONE PER TERMINAL