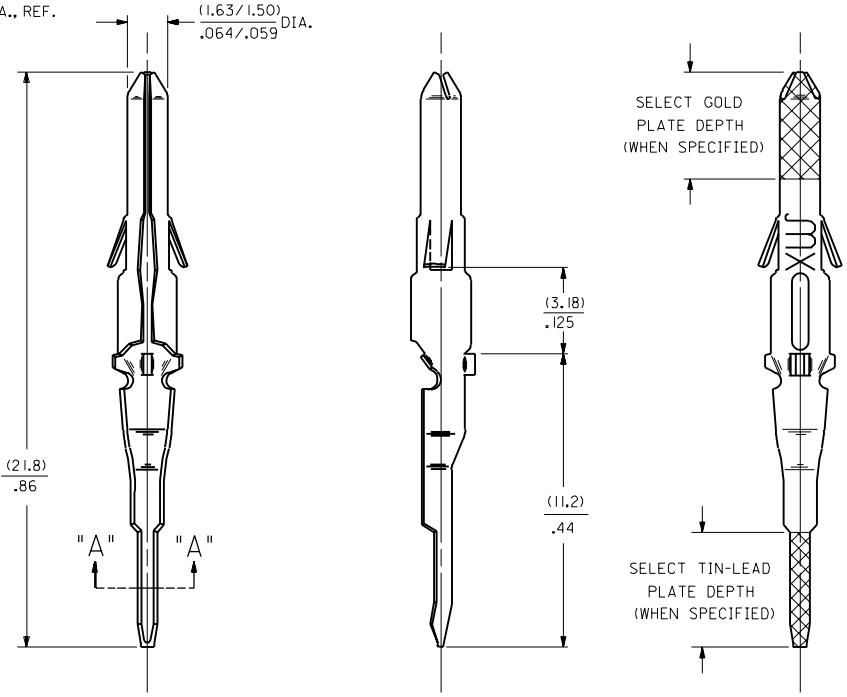
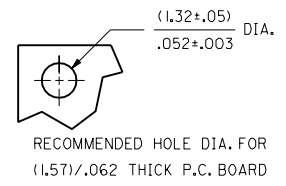
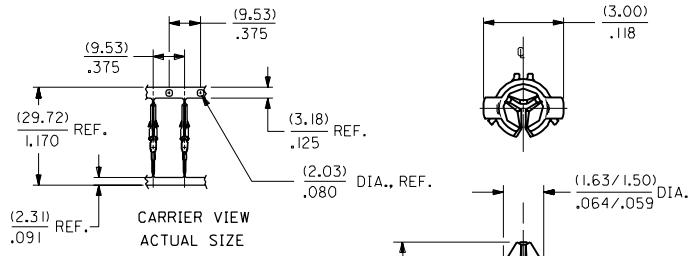


PART NO.	ENG. NO.
02-06-8103	1778-P(913)L
02-06-6123	1778-(563)L
02-06-6122	1778-(568)L
02-06-6121	1778-(575)L
02-06-8104	1778-(P913)

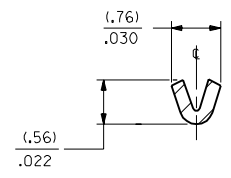


LEGEND

1778-(****)*--*
 P=PREPLATE FINISH CODE MATERIAL BLANK=MAT'L. NOTE 1
 BLANK=POSTPLATE FORM L=LOOSE

- NOTES:
 1. TERMINAL FOR USE WITH (1.57)/.062 SERIES HOUSINGS.
 2. THIS PART CONFORMS TO PRODUCT SPEC. 02-06.

- FINISH CODES:
 913 HOT TIN-LEAD DIP (.00254)/.000100 MIN.
 568 SELECT GOLD PLATE (.00051)/.000020 MIN. IN CONTACT AREA, SELECT TIN-LEAD (.00508)/.000200 MIN. IN TAIL AREA, OVER (.00076)/.000030 MIN. NICKEL OVERALL.
 575 SELECT GOLD PLATE (.00127)/.000050 MIN. IN CONTACT AREA, SELECT TIN-LEAD (.00127)/.000050 MIN. IN TAIL AREA, OVER (.00127)/.000050 MIN. NICKEL OVERALL.
 563 SELECT GOLD PLATE (.00076)/.000030 MIN. IN CONTACT AREA, SELECT TIN-LEAD (.00254)/.000100 MIN. IN TAIL AREA, OVER (.00127)/.000050 MIN. NICKEL OVERALL.



SECT. "A-A"
 SCALE:20X

MATERIAL NOTE:
 1. CARTRIDGE BRASS, ALLOY #C26000
 (.20)/.008 THICK, EXTRA SPRING TEMPER.

AA2	SHOW SEL TIN-LEAD PER ECR #1218 6-5-95 RW
AA1	X-REMOVE -(P913) ECR U2 0220 GC 2/10/92 RW
AA	REV. & REDRAWN PER ECR 10372 GEP 12-3-87 RW

DIMENSIONS SHOWN METRIC (INCH) UNLESS OTHERWISE SPECIFIED TOLERANCES: ANGULAR ± 1/2°		▽ = 0	▽ = 0	REVISE ONLY ON CAD SYSTEM	
3 PLACE ± .010	---	TITLE			
2 PLACE ± .014	± 0.25	TERMINAL, MALE (1.57)/.062 DIA. P.C. TAIL TYPE			
1 PLACE ---	± 0.36	SHEET NO. DATE 1 OF 1 12 / 3 / 87			
DRAFT WHERE APPLICABLE MUST REMAIN WITHIN DIMENSIONS		MOLEX INCORPORATED LITTLE ROCK, AR 72616 U.S.A.		PART NO. SD-1778-00	
DRWG. BY: CEP	CHKD. BY: RW	FILE NAME: SD1778X1.DWG	SCALE: B = 1	DRWG. NO. SD-1778-00	
APP'D. BY: RAS	SCALE: B = 1	THIS DRAWING CONTAINS INFORMATION THAT IS PROPRIETARY TO MOLEX INC. AND SHOULD NOT BE USED WITHOUT WRITTEN PERMISSION.		SIZE: CP	C