

KTS-R – 600Vac, 1-600A, Fast-Acting Fuses



Description: Advanced protection Class RK1 current-limiting, fast-acting fuses.

Catalog Symbol: KTS-R-(amp)

Ratings:

- Volts – 600Vac
- Amps – 1-600A
- IR – 200kA Vac RMS Sym.

Agency Information:

CE, UL Listed, Std. 248-12, Class RK1, Guide JDDZ, File E4273
 CSA Certified, C22.2 No. 248.12, Class 1422-02, File 53787

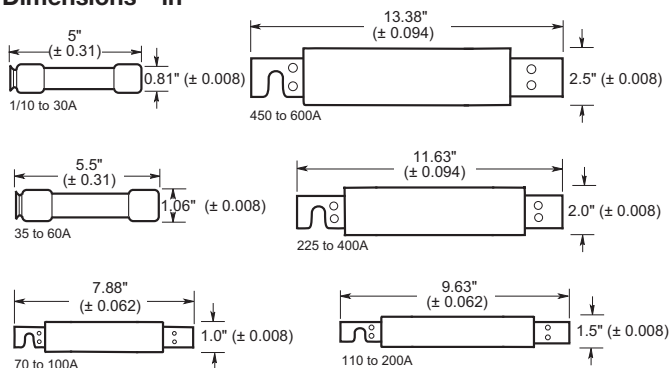
Catalog Numbers (amps)

KTS-R-1	KTS-R-20	KTS-R-80	KTS-R-275
KTS-R-2	KTS-R-25	KTS-R-90	KTS-R-300
KTS-R-3	KTS-R-30	KTS-R-100	KTS-R-350
KTS-R-4	KTS-R-35	KTS-R-110	KTS-R-400
KTS-R-5	KTS-R-40	KTS-R-125	KTS-R-450
KTS-R-6	KTS-R-45	KTS-R-150	KTS-R-500
KTS-R-8	KTS-R-50	KTS-R-175	KTS-R-600
KTS-R-10	KTS-R-60	KTS-R-200	
KTS-R-12	KTS-R-70	KTS-R-225	
KTS-R-15	KTS-R-75	KTS-R-250	

Carton Quantity and Weight

Amp Rating	Carton Qty.
1-30	10
40-60	10
70-100	1
110-200	1
225-400	1
450-600	1

Dimensions – in



Features:

- Single-element, fast-acting fuses with minimal time-delay
- Provides a high degree of short-circuit current-limitation (component protection)
- Particularly suited for circuits and loads with no heavy surge currents of motors, transformers, solenoids, and welders
- Commonly used to protect circuit breakers with lower interrupting ratings.
- If used in circuits with surge currents (motors, etc.) must be sized to prevent unwanted opening. It is recommended to use an ultimate protection Low-Peak™ LPS-RK time-delay fuse for inductive load applications.
- Incorporate Class R rejection feature. Can be inserted in non-rejection type fuse holders to physically and electrically replace fast-acting Class H, K1, K5, RK5, and other fast-acting fuses.

Recommended Fuse Blocks

Fuse Amps	1-Pole	2-Pole	3-Pole
0-30	R60030-1	R60030-2	R60030-3
35-60	R60060-1	R60060-2	R60060-3
70-100	RM60100-1CR	RM60100-2CR	RM60100-3CR
110-200	RM60200-1CR	RM60200-2CR	RM60200-3CR
225-400	RM60400-1CR	RM60400-2CR	RM60400-3CR
450-600	RM60600-1CR	RM60600-2CR	RM60100-3CR

For additional information on 600 volt fuse blocks, see Data Sheet # 1111 (1-60A) and product brochure # 3192 (70-600A).

Fuse Reducers For Class R Fuses

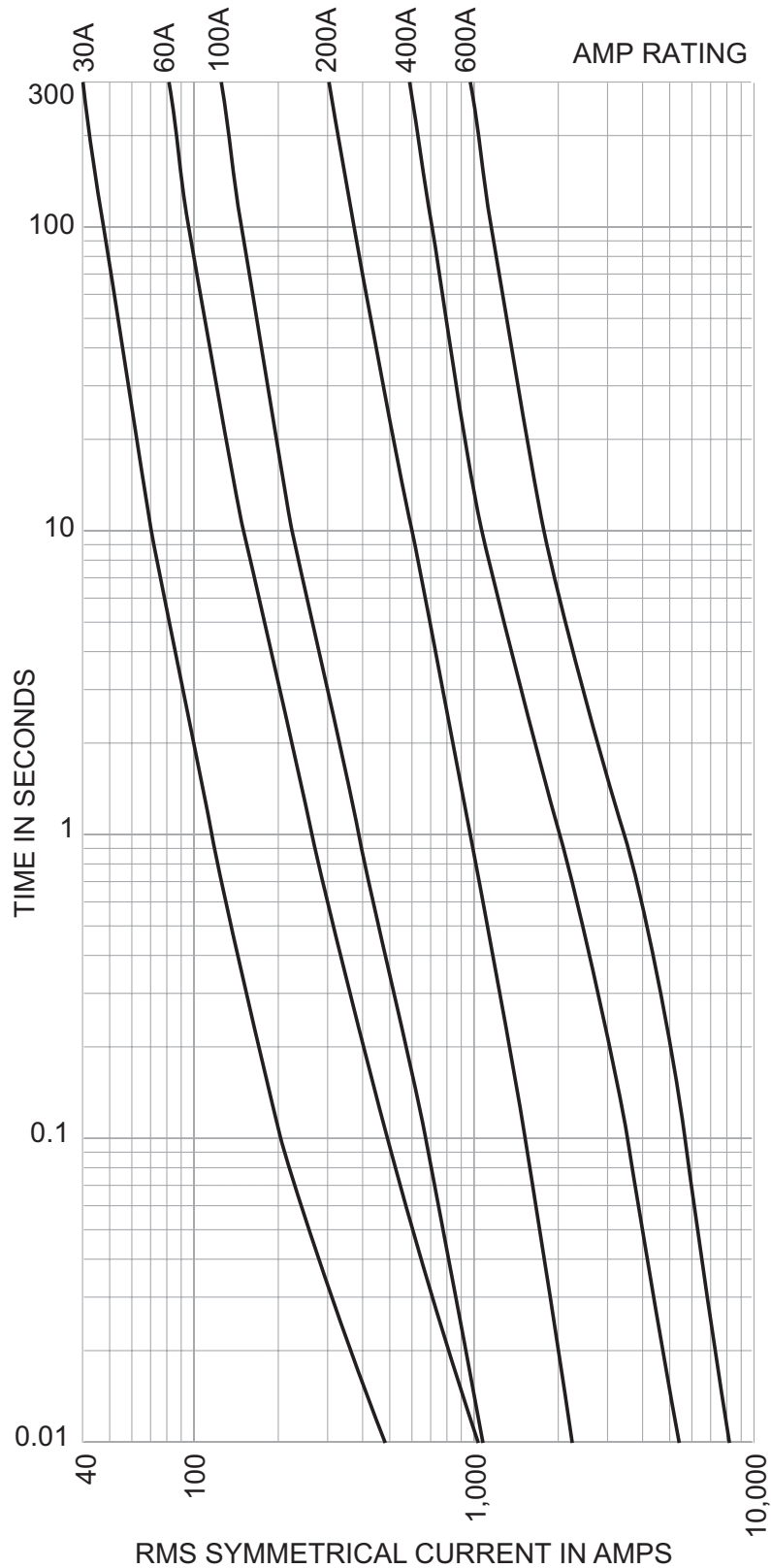
Equipment Fuse Clips	Desired Fuse (Case) Size	Catalog Numbers (Pairs)
60A	30A	NO.663-R
	30A	NO.216-R
100A	60A	NO.616-R
	100A	NO.626-R
200A	100A	NO.2621-R
400A	100A	NO.2641-R
	200A	NO.642-R
	100A	NO.2661-R
600A	200A	NO.2662-R
	400A	NO.2664-R†

† Single reducer only (pair not required).

For additional information on Class R fuse reducers, see Data Sheet # 1118.

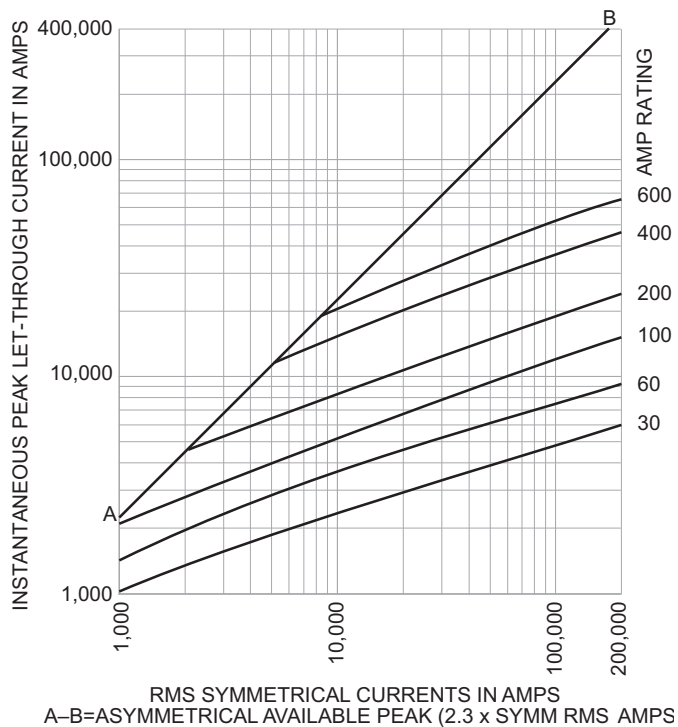
KTS-R – 600Vac, 1-600A, Fast-Acting Fuses

Time-Current Curves - Average Melt



KTS-R – 600Vac, 1-600A, Fast-Acting Fuses

Current-Limitation Curves



The only controlled copy of this Data Sheet is the electronic read-only version located on the Cooper Bussmann Network Drive. All other copies of this document are by definition uncontrolled. This bulletin is intended to clearly present comprehensive product data and provide technical information that will help the end user with design applications. Cooper Bussmann reserves the right, without notice, to change design or construction of any products and to discontinue or limit distribution of any products. Cooper Bussmann also reserves the right to change or update, without notice, any technical information contained in this bulletin. Once a product has been selected, it should be tested by the user in all possible applications.