

# MICRO SWITCH

FREEPORT ILLINOIS, U.S.A  
A DIVISION OF HONEYWELL  
FED. MFG. CODE 91929

# ASSEMBLY- PUSHBUTTON SWITCH

CATALOG LISTING

## IPB575-T

FAA-PMA

IPB575-T  
PAGE 1 OF 1

M

DRAWING  
NUMBER

X

X

ISSUE  
8

REPLACES

PR-9121-T

CHECK

CHECK

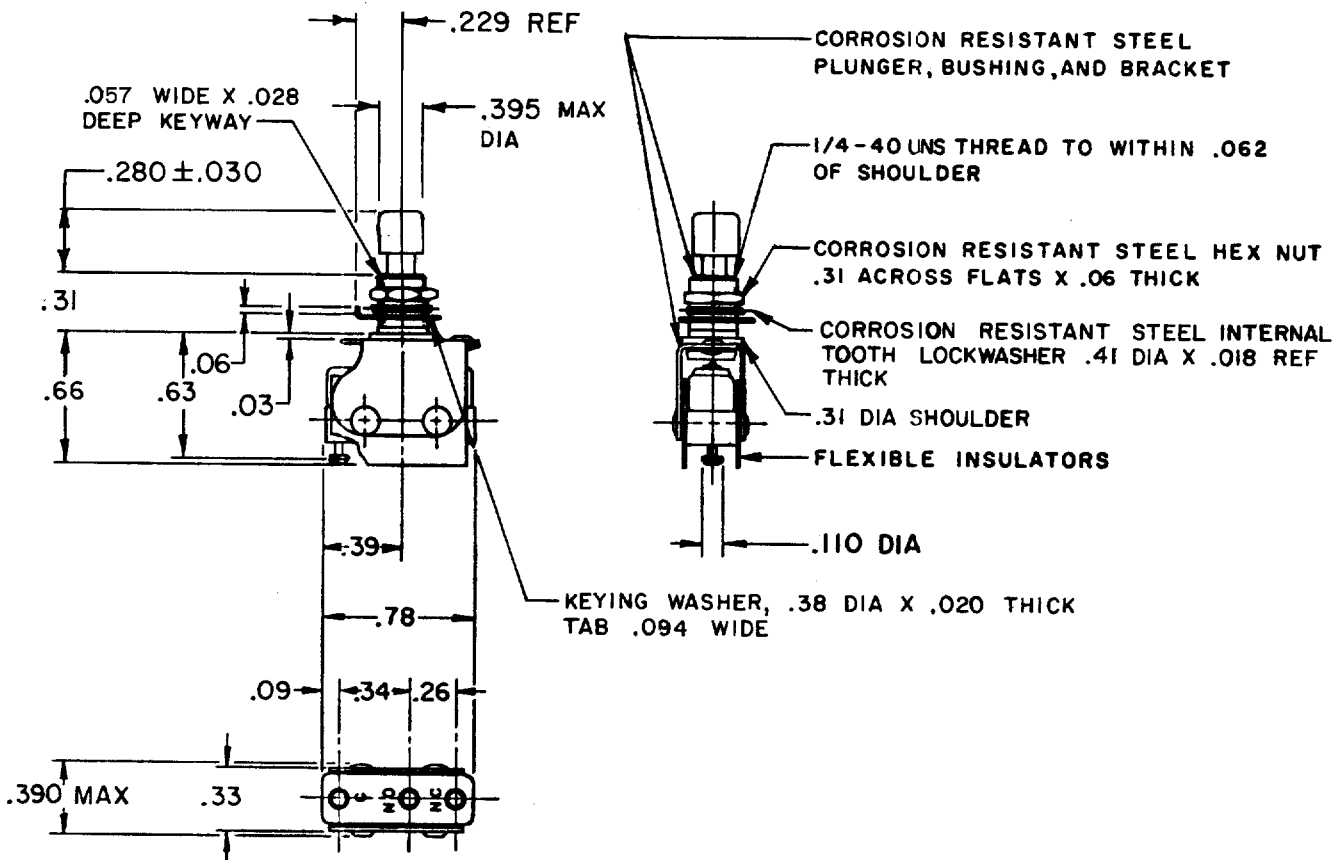
CHECK

CHECK

CHECK

REVISIONS

A	PR-9121	WJM	24 JUL 80
B	C O	J M J	13 OCT 80
C	CO48860	C E B	22 DEC 80
D	CO49278	J A P	MAR 81
E	CO77562	J A L	MAR 94
F	CO-93166	G J W	20 JUL 98
G	CO93880	G J W	6 JAN 99

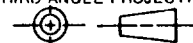


NOTE -

- 1 - UNIT INCLUDES CAT. LIST. "23SM" BASIC SWITCH
- 2 - TERMINALS ARE PLATED FOR SOLDERING
- 3 - RECOMMENDED FOR MANUAL OPERATION ONLY
- 4 - MOUNTING HARDWARE AND WHITE PLASTIC BUTTON FURNISHED UNASSEMBLED

THIS DRAWING COVERS A PROPRIETARY ITEM AND IS THE PROPERTY OF MICRO SWITCH, A DIVISION OF HONEYWELL. THIS DRAWING IS NOT TO BE COPIED OR USED WITHOUT THE APPROVAL OF MICRO SWITCH.

THIRD ANGLE PROJECTION



CHARACTERISTICS

OPERATING FORCE --- 1 LB APPROX  
TOTAL TRAVEL ----- .030 APPROX

ELECTRICAL DATA

CONTACT ARRANGEMENT  
S P D T

30 VOLT DC RATING

INDUCTIVE ----- SEA LEVEL ----- .5 AMP  
50,000 FT ----- .5 AMP  
RESISTIVE ----- SEA LEVEL ----- 1.0 AMP  
50,000 FT ----- 1.0 AMP  
MAXIMUM INRUSH ----- .2 AMP

SCALE FULL

DO NOT SCALE PRINT

TOLERANCES  
APPLY TO DESIGN UNITS. CONVERSIONS ARE ONLY FOR REFERENCE. UNLESS NOTED, TOLERANCES ARE ±

	DIM.		TOL.	
	mm	mm/in	in	mm/in
NO PLACES	X	1/.04		
ONE PLACE	X,X	0.4/.016	X,X	0.8/.03
TWO PLACES	X,XX	0.19/.008	X,XX	0.38/.016
THREE PLACES	X,XXX		X,XXX	0.13/.005

DESIGN UNITS  METRIC  US CUSTOMARY

WEIGHT

FORMTEK

FO-52848-A

DRAWN

WJM 24 JUL 80

C E B 25 JULY 80

CHECK

CHECK

CHECK

CHECK