

P	LTR	DESCRIPTION	DATE	DWN	APVD
C1		REVISED PER ECR-17-015449	26OCT2017	BDA	KR

D

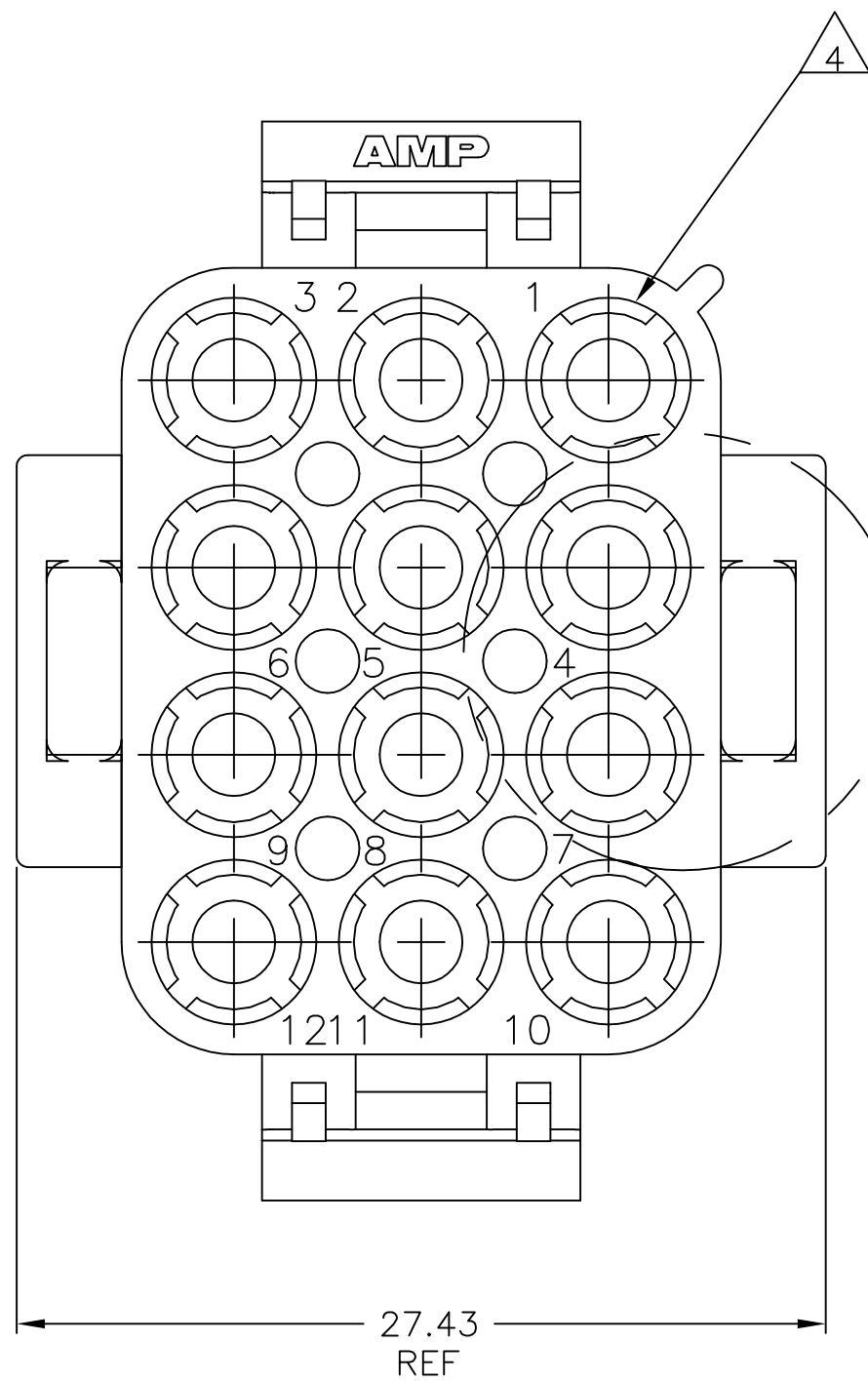
C

B

A

27.43	1.080
26.67	1.050
20.32	.800
11.68	.460
3	.118
0.4	.016
0.38	.015
0.13	.005
MM	IN
CONVERSION TABLE	

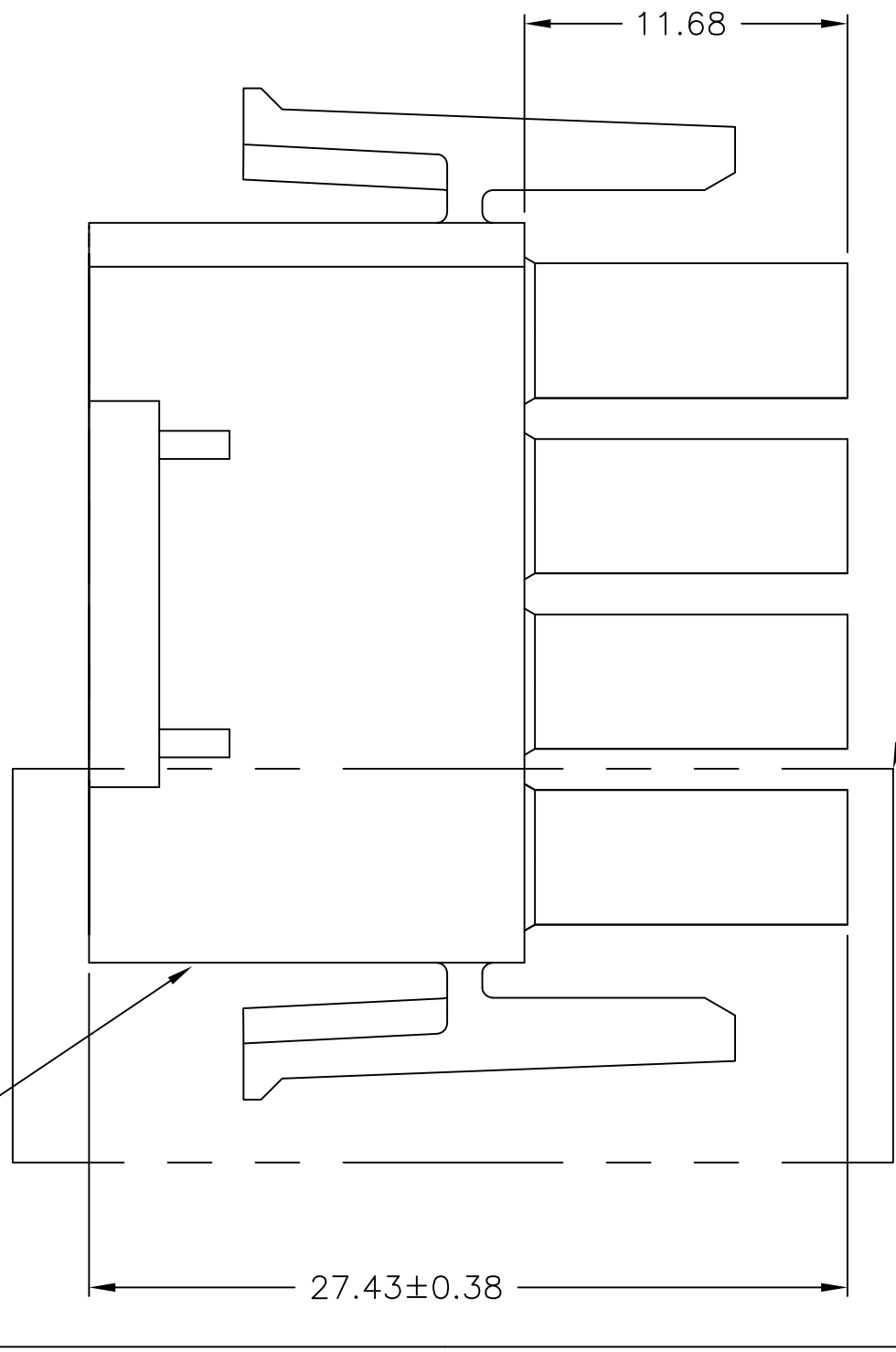
4805 (1/15)



SEE DETAIL A

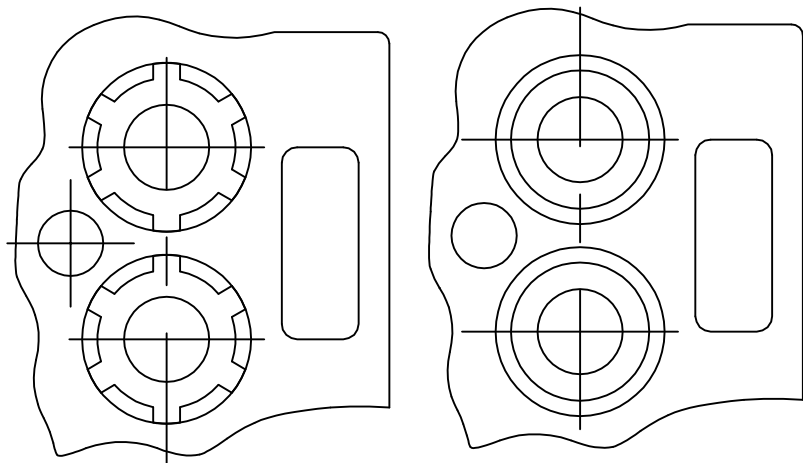
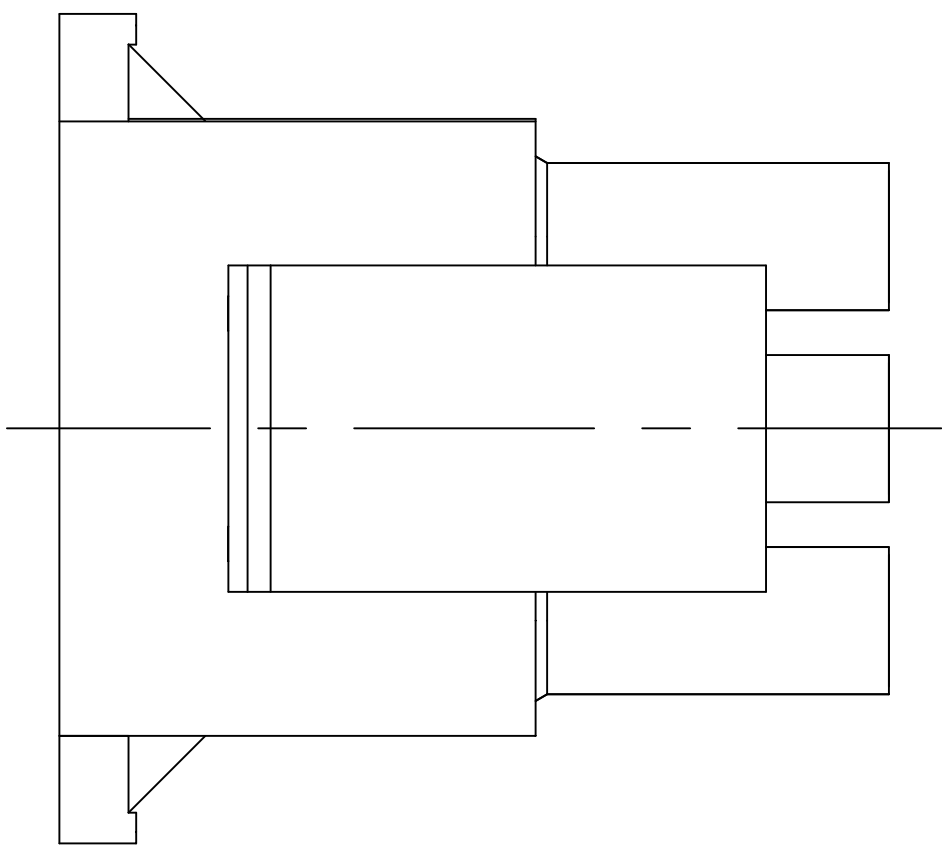
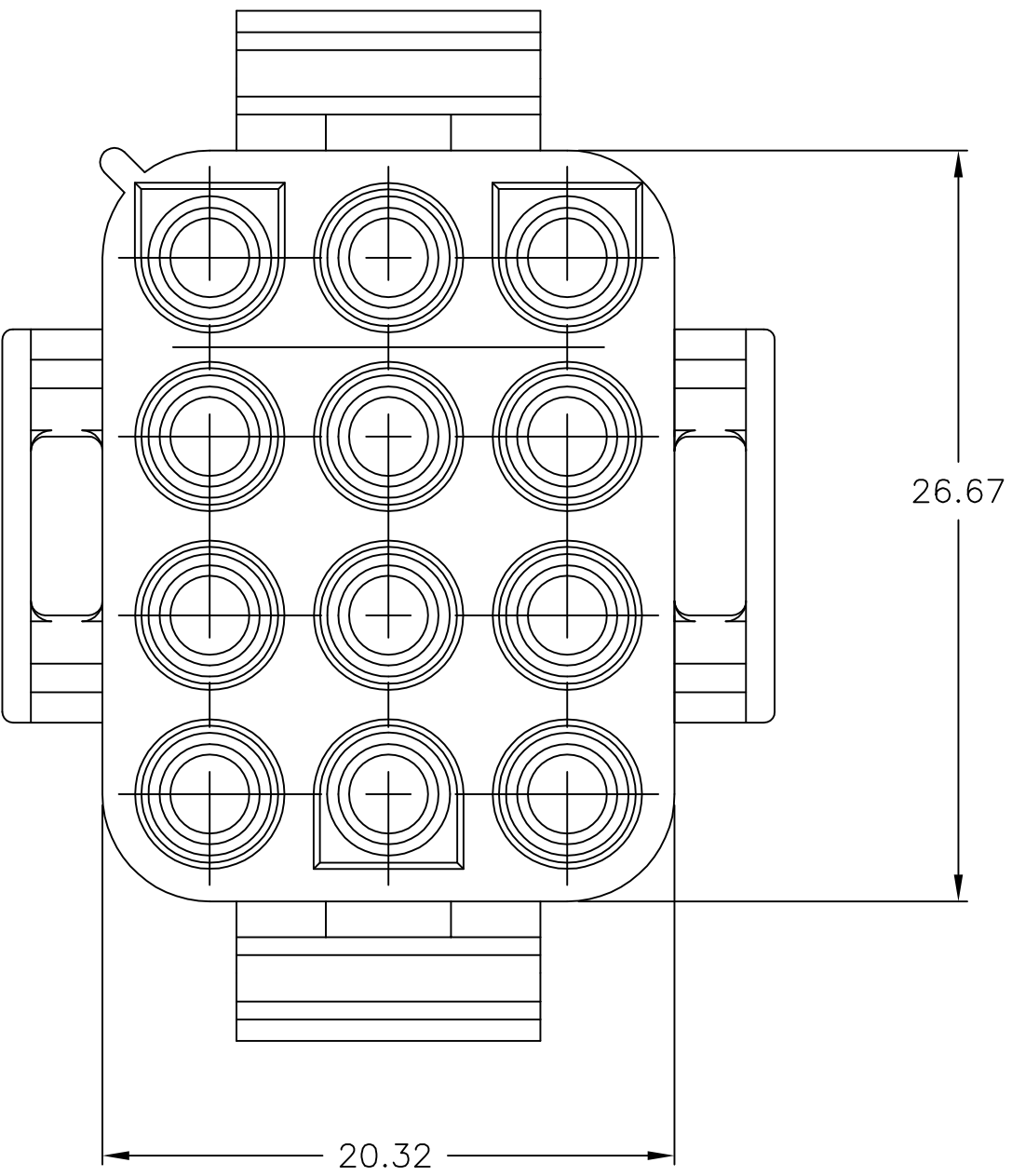
5

A



SEE DETAIL B

A



DETAIL A
OPTIONAL CONSTRUCTION

3-DIMENSIONAL MODEL
NOT TO SCALE

- MATES WITH APPROPRIATE UNIVERSAL MATE-N-LOK™ CAP OR HEADER.
- SMALL NICKS ARE PERMITTED ON THE CIRCUIT TOWERS WHICH COULD INCREASE THE INITIAL HOUSING MATING FORCE BY UP TO 4.4 NEWTONS [1.0] LBS. NO INDIVIDUAL NICKED TOWER SHALL INCREASE THIS FORCE BY OVER 2.2 NEWTONS [.5] LBS.
- DIMENSIONS SHOWN REPRESENT PRODUCT IN DRY, AS MOLDED, CONDITION. ADDITIONAL 2% GROWTH DUE TO SUBSEQUENT MOISTURE ABSORPTION MAY OCCUR AND SHOULD BE ACCOUNTED FOR.
- FOUR RIBS EQUALLY SPACED, NO SPECIFIC ORIENTATION, NO RIBS OR SIX RIBS EQUALLY SPACED, NO SPECIFIC ORIENTATION, OPTIONAL.
- UNDERWRITERS RECOGNIZED COMPONENT LOGO AND CSA CERTIFICATION LOGO TO BE LOCATED ONCE ON EACH SIDE OF HOUSING.
- FLAMMABILITY V2 FOR THICKNESS 0.38mm, 1.5mm, qnd 3.0mm PER IEC 60695-11-10.
- GLOW-WIRE FLAMMABILITY (GWI) 800°C FOR THICKNESS 0.38mm AND 0.75mm PER IEC 60695-2-12.
- GLOW-WIRE FLAMMABILITY (GWI) 960°C FOR THICKNESS 1.5mm AND 3.0mm PER IEC 60695-2-12.
- GLOW-WIRE IGNITION (GWIT) 825°C FOR THICKNESS 0.38mm, 0.75mm, 1.5mm AND 3.0mm PER IEC 60695-2-13.

NATURAL	1586848-1
COLOR	PART NUMBER

THIS DRAWING IS A CONTROLLED DOCUMENT.		DWN K. WHITAKER 19JUL2007	TE Connectivity	
		CHK D. COLEY 19JUL2007		
DIMENSIONS:		APVD D. COLEY 19JUL2007	NAME	
mm		PRODUCT SPEC	PLUG, 12 CIRCUIT, UNIVERSAL MATE-N-LOK(TM)	
		APPLICATION SPEC	SIZE	
		WEIGHT	A1 00779 C=1586848	
MATERIAL NYLON,UL 94V-2		FINISH -	CUSTOMER DRAWING	
		SCALE	4:1	SHEET 1 OF 1
		REV	C1	