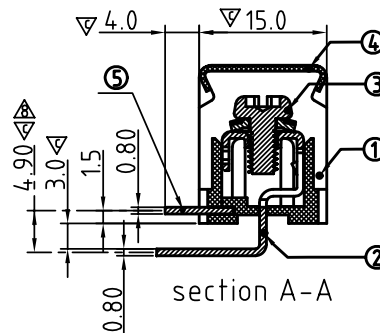
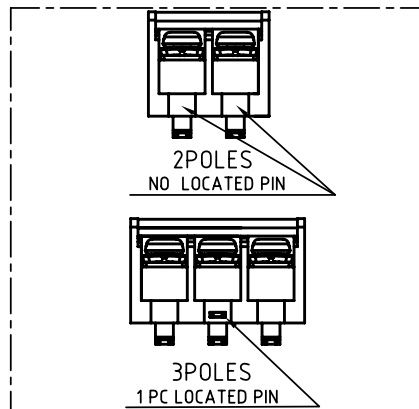


PCB Layout



SIGN	DATE	DESCRIPTION	APPROVER
△	2008.2.25	Operating Temp. changed from -40°C+105°C to -40 °C+115°C	kind
△	2008.6.3	SCREW TORQUE VALUE changed from 10 kgf.cm to 8 kgf.cm	kind
△	2008.6.3	WIRE RANGE changed from 22 - 12AWG to 22 - 10AWG	kind
△	2008.6.3	RATED CURRENT changed 20 A to 30 A	kind
△	2008.6.3	The material changed from PVC to PC	kind
△	2008.6.3	APPROVAL:cULus	kind
△	10/27'12	Change the screw plating specification	Jacky
△	10/27'12	Add the dimensional label	Jacky
THIS IS CAD DRAWING, DO NOT REVISE MANUALLY!!!			

#### MATERIALS ELECTRICAL

△ RATED VOLTAGE & CURRENT:	300 V, 30 A
WITHSTAND VOLTAGE:	AC 2000 V/Min
INSULATION RESISTANCE:	1000 MΩ OR MORE AT DC 500 V
△ OPERATING TEMPERATURE RANG:	-40 °C ~+115 °C
△ SCREW TORQUE VALUE:	8 kgf.cm
△ WIRE RANGE:	22 - 10AWG
1) MOLDED PARTS:	Thermoplastic, UL 94 V-0 BLACK
2) TERMINAL:	BRASS, 0.8t, Tin PLATED
△ 3) TERMINAL SCREWS:	STEEL, M3.5
△ 4) COVER MATERIAL:	PC
5) LOCATED PIN :	BRASS, 0.8t, Tin PLATED

△ APPROVAL: Critical dimension: ▽

YK 50A xx 2 x x 00G	G:RoHS compliant(lead<4%) in copper alloy
NO. OF POLES	MARK
02: 2 POLES	0: "@" MARK
03: 3 POLES	1: "ANY" MARK
04: 4 POLES	
⋮	
18: 18 POLES	TERMINAL & SCREW PLATED
	0: TERMINAL & SCREW: G/F
	△ 1: TERMINAL: G/F, SCREW: Zinc
	2: TERMINAL: Sn, SCREW: G/F
	△ 3: TERMINAL: Sn, SCREW: Zinc

N=Number of poles
Dim.A= NX9.5+2.5
Dim.B= (N-1)X9.5

POLE	2-6	7-12	13-18
Dim.A	+/-0.20	+/-0.25	+/-0.30
Dim.B	+/-0.10	+/-0.15	+/-0.20

# ANYTEK

## CUSTOMER COPY

ALL RIGHTS RESERVED. REPRODUCTION OR ISSUE TO THIRD PARTIES IN ANY FORM WHATEVER IS NOT PERMITTED WITHOUT WRITTEN AUTHORITY FROM THE PROPRIETOR. PROPERTY OF ANYTEK TECHNOLOGY CO., LTD

TITLE		YK50A with cover Series			
PART NO.	YK50Axx2xx00G			DWG NO.	8YK0001-50A
APPROVED	CHECKED	DESIGNED	DRAWN	CUST NO.	
		Jacky 2012.10.27	Jacky 2012.10.27		Tolerance
				UNIT: mm	X. ±0.50
				SCALE: NONE	X.X ±0.30
				SHEET: 01/01	X.XX ±0.10
				REV.: D	X° ±1°