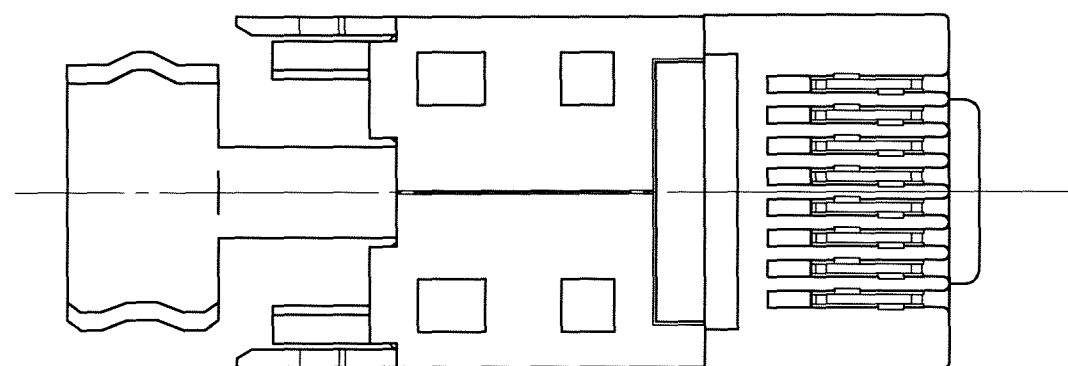
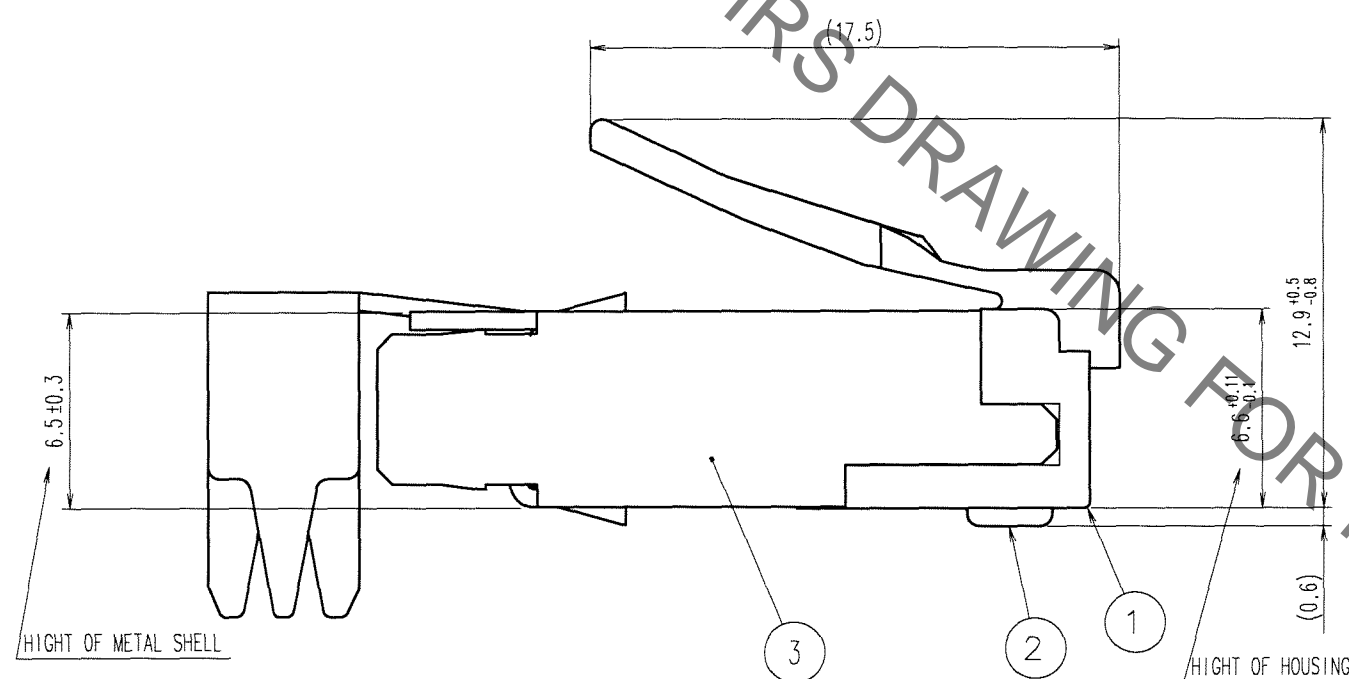
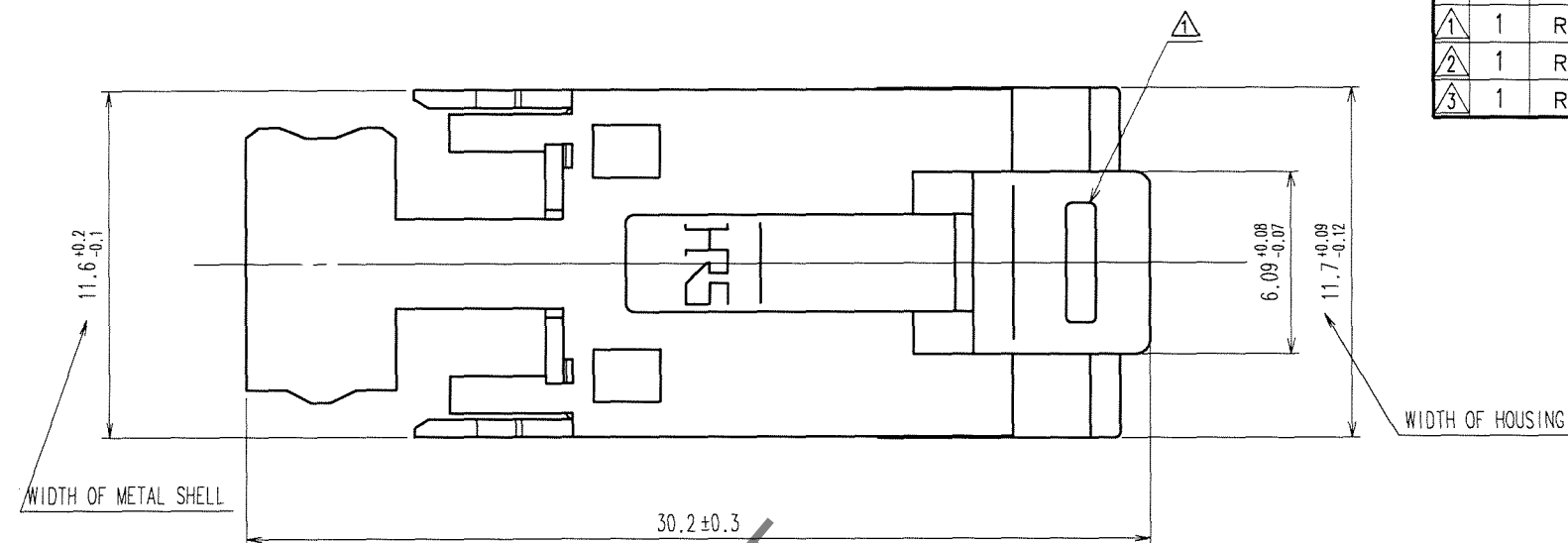
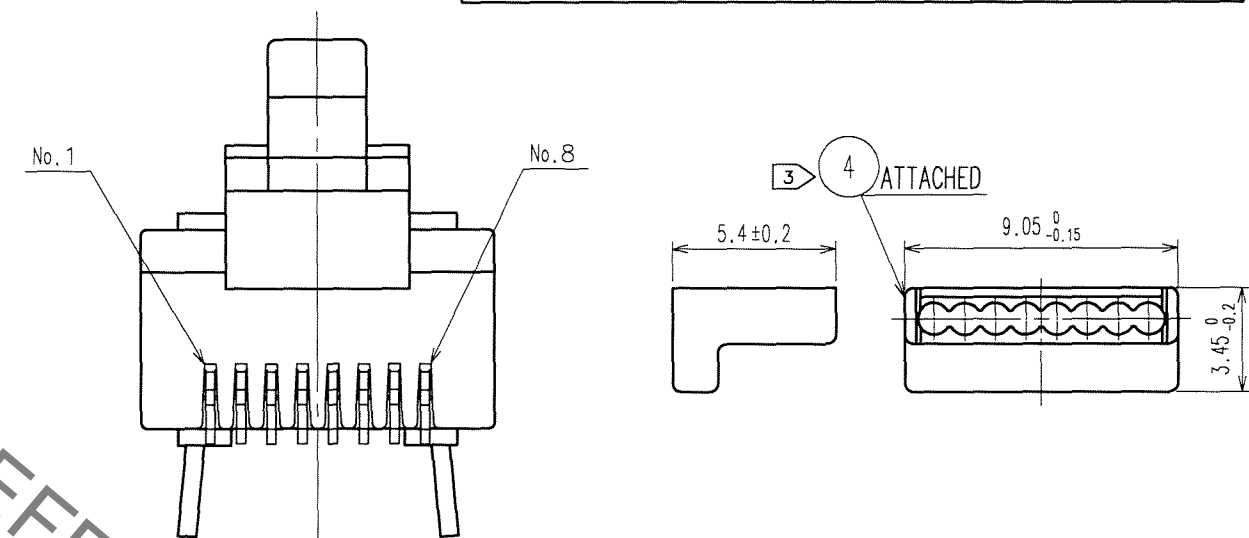
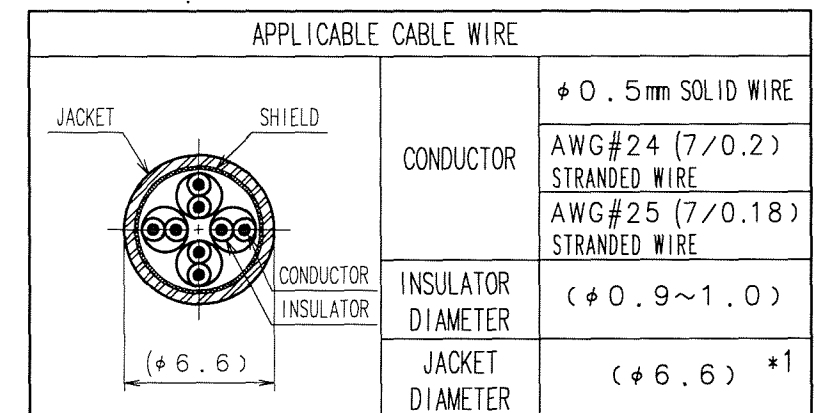


	COUNT	DESCRIPTION OF REVISIONS	BY	CHKD	DATE		COUNT	DESCRIPTION OF REVISIONS	BY	CHKD	DATE
1	1	RE-E-07734	S.S	T.W	01.03.15	1		REWRITTEN BY CAD	Y.S	Y.E	06.09.01
2	1	RE-E-08257	K.H	T.W	01.12.21	4	1	DIS-E-000934	Y.S	Y.E	06.09.01
3	1	RE-E-09963	S.S	T.W	04.05.31	1					



4 6 THIS PRODUCT SATISFIES CAT6 REQUIREMENTS FOR BASIC LINK CONFIGURATION.
(THE CONNECTOR BY ITSELF IS NOT CAT6 COMPLIANT.)
APPLICABLE RECEPTACLE:
TM21R-3C-88{**}
TM21R-5C-88{**}
TM21R-5C-88-LP(**)

2 TABLE-1



NOTES 1 () INDICATES THE REFERENCE DIMENSIONS.


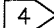
2 APPLICABLE CABLE IS SHOWN IN TABLE-1

* 1 : THE OUTER DIAMETER OF THE VINYL JAKET VARIES SLIGHTLY
DEPENDING ON THE HARDNESS:6.6DIA. IS FOR REFERENCE.




3 PLEASE USE ACCESSORY AS A GUIDE PLATE AND ASSEMBLE CONNECTOR WITH CABLES INSERTING ACCESSORY INTO CONNECTER.

4 HOOD COLORS ARE SHOWN IN TABLE-2.

② 5 TO SATISFY CAT5e PERFORMANCE, PLEASE ASSEMBLE ACCORDING TO HRS INSTRUCTION.

3	BRASS	TIN PLATING				
2	PHOSPHOR BRONZE	GOLD PLATING 1.27μm	5	POLYAMIDE		
1	POLYCARBONATE	(CLEAR)	4	POLYCARBONATE	(CLEAR)	
NO.	MATERIAL	FINISH, REMARKS		NO.	MATERIAL	FINISH, REMARKS

CODE NO. (OLD)		DRAWN	DESIGNED	CHECKED	APPROVED	RELEASED
		S.SATO	S.SATO	T.WATANABE	H.MIWA	
		00.07.03	00.07.03	00.07.03	00.07.03	.

 	DRAWING NO.	PART NO.
	EDC3-121484-04	TM21P-88Pr J
	 HIROSE ELECTRIC CO., LTD	CODE NO. CL222-2862-9-r J
SCALE 4 : 1		
UNITS mm		1/2

Jun.1.2019 Copyright 2019 HIROSE ELECTRIC CO., LTD. All Rights Reserved.
In case of consideration for using Automotive equipment / device which demand high reliability, kindly contact our sales window correspondents.

TO
Q2

