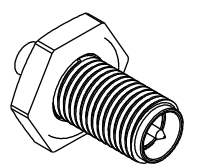


THIS DOCUMENT IS SUBJECT TO CHANGE WITHOUT NOTICE. IT IS CONFIDENTIAL AND A PROPERTY OF Amphenol LTW. DISCLOSURE TO THIRD PARTY HAS TO BE AUTHORIZED BY Amphenol LTW.

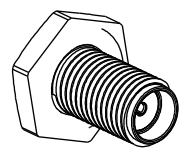
REV.	ECN NO.	DATE	SIGN	DESCRIPTION
A	Initial Release	2016/04/27	Kaven	Change Rev.01 To Rev.A

**ALTW**  
CONFIDENTIAL  
2016-04-27  
R&D DEPT.

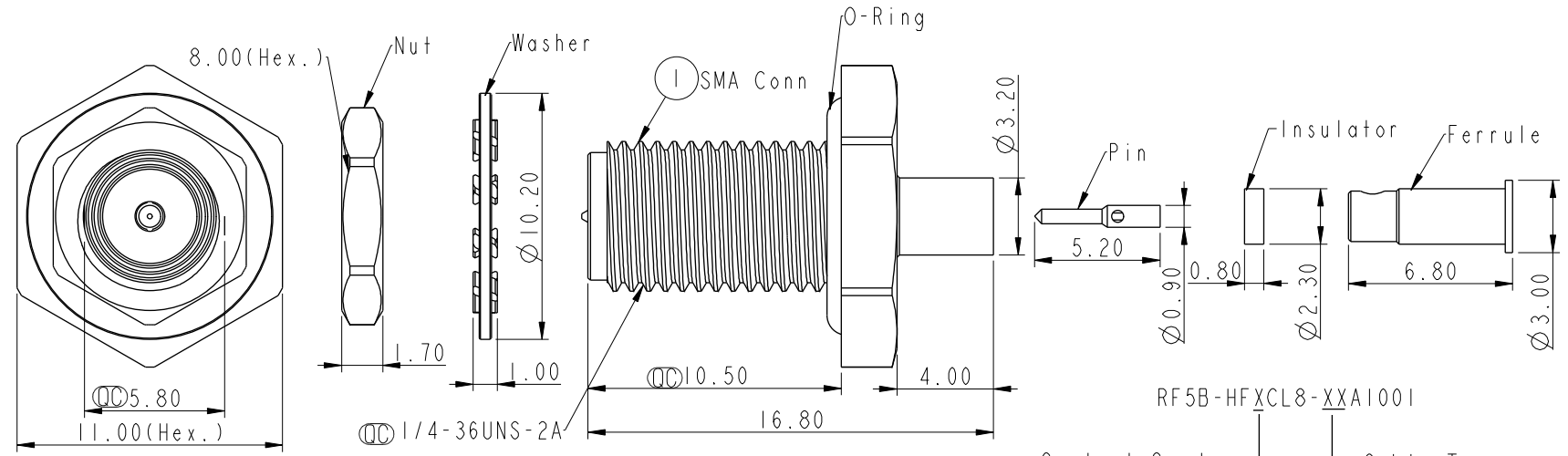
**ALTW**  
DCC. DEPT.  
CONFIDENTIAL  
2016.05.16  
ISSUED



(M): Male Pin



(F): Female Pin



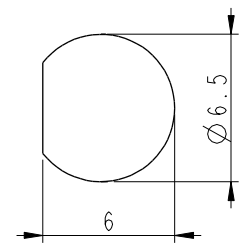
RF5B-HFXCL8-XXA1001

Contact Gender	Cable Type
(M): Male Pin	(29): RG178
(F): Female Pin	(53): 1.13mm
	(54): 1.32mm
	(55): 1.37mm

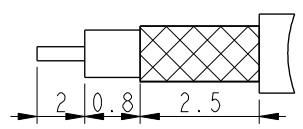
Note:

- \* M Important Dimension To Check.
- \* Electrical:
  - Impedance: 50Ω
  - Frequency: 6GHz
  - V.S.W.R
  - 0-3Ghz: 1.3(Max), 4-6Ghz: 1.5(Max)
- \* Mechanical & Environmental:
  - Mating: 1/4"-36UNS
  - Temperature: -40°C~105°C
  - (It's Subject To ALTW Testing Condition.)
  - Unmated Waterproof Rating: IPx8
  - (Under Water 1M 24hours)
  - Salt Spary Corrosion Test: 48h
- \* Panel Thickness Max: 2.3mm.

- \* Material:
  - Shell: Brass, Gold Plated
  - Connector Body: Brass, Gold Plated
  - Center Contact: Brass, Gold Plated
  - Insulator: PTFE
  - Crimp Ferrule: Brass, Gold Plated
  - O'ring: Silicone, Red
- \* Cable Assembly:
  - Contact Pin: Solder or Crimp
  - Crimped Pin Size SQ.028"
  - Ferrule: Solder or Crimp
  - Crimped Size HEX.068"



Recommended Panel Cut-Out



Recommend Cable Stripping DIM'S

UNIT: mm		
TOLERANCE	.X	±0.25
	.XX	±0.1
	.XXX	±0.05
ANGLES		±1°

TITLE SMA STRAIGHT BULKHEAD JACK CONN			
SCALE 7:2	SIZE A4	SHEET 1 OF 1	
REV. A	WC-REV. A.1	<span style="border: 1px solid black; border-radius: 50%; padding: 2px;">M</span> : Inspection item	

**Amphenol LTW**  
安費諾亮泰企業股份有限公司

ITEM NO	DRAWN BY Kaven	DATE 2016/04/27
DWG NO RF5B-HFXCL8-XXA1001	CHECKED BY Doreen	DATE 2016/04/27
CUSTOMER ALTW	APPROVED BY Lisa	DATE 2016/04/27