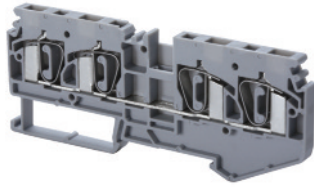


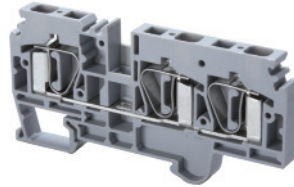
Feed-Through & Multi-Connection Spring Clamp



CSC4T2-2



CSC6T1-2



Terminal Width	6 mm			8 mm		
Height x Length	42 x 105 mm			45 x 94 mm		
Stripping Length	15 mm			15 mm		
Insulation Material	Polyamide 6.6			Polyamide 6.6		
Type of Connection	4 spring clamps & 2 slots for interconnection			3 spring clamps & 2 slots for interconnection		
Approvals						
Wire Range	22-12 AWG	0.2-4 sq.mm	22-12 AWG	22-8 AWG	0.2-6 sq.mm	22-8 AWG
Voltage Rating	600 V	800 V	600 V	600 V	800 V	600 V
Current Rating	25 A	32 A	25 A	50 A	41 A	50 A
Other Approvals						

Terminal Block

End Plate	
-----------	--

DIN Rail
for ordering information
refer to pages 90-91

End Stop for ordering information refer to page 92	
----------------------------------------------------------	--

Jumpers	Adjacent	
	Alternate	

Push in type wire jumper	
-----------------------------	--

Marking Tags	
--------------	--

Cat. No.	Std. Pk.
----------	----------

CSC4T2-2	50
EPCSC4T2-2	50



CA103	50
CA702	50
CA802	50

CA801/2	100
CA801/2-3	100

CA901/2	100
---------	-----

MT6	100
-----	-----

Cat. No.	Std. Pk.
----------	----------

CSC6T1-2	50
EPCSC6T1-2	50



CA103	50
CA702	50
CA802	50

CA801/3	100
CA801/3-3	100

CA901/3	100
---------	-----

MT8	100
-----	-----