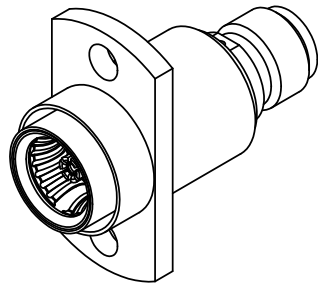


PRODUCT DATA DRAWING

REVISION HISTORY			
REV	DESCRIPTION	DATE	APPROVED
A	DCN 41727	10/15	DAL
B	DCN 48428	02/19	STW



MATERIAL:

BODIES & BUSHING:	STAINLESS STEEL PER AMS-5640, ALLOY UNS S30300, TYPE 1
CONTACT SLEEVE & CONTACT:	BERYLLIUM COPPER PER ASTM B196, ALLOY No. UNS C17300, TD04
SHIM SPRING & OUTER CONTACT:	BERYLLIUM COPPER PER ASTM B194, ALLOY No. UNS C17200, TD04
INSULATOR:	PTFE PER ASTM D1710, TYPE I, GRADE 1, CLASS B
E-RING:	STAINLESS STEEL TYPE PH 15-7 OR 17-7
COMPRESSION SPRING:	302 STAINLESS STEEL

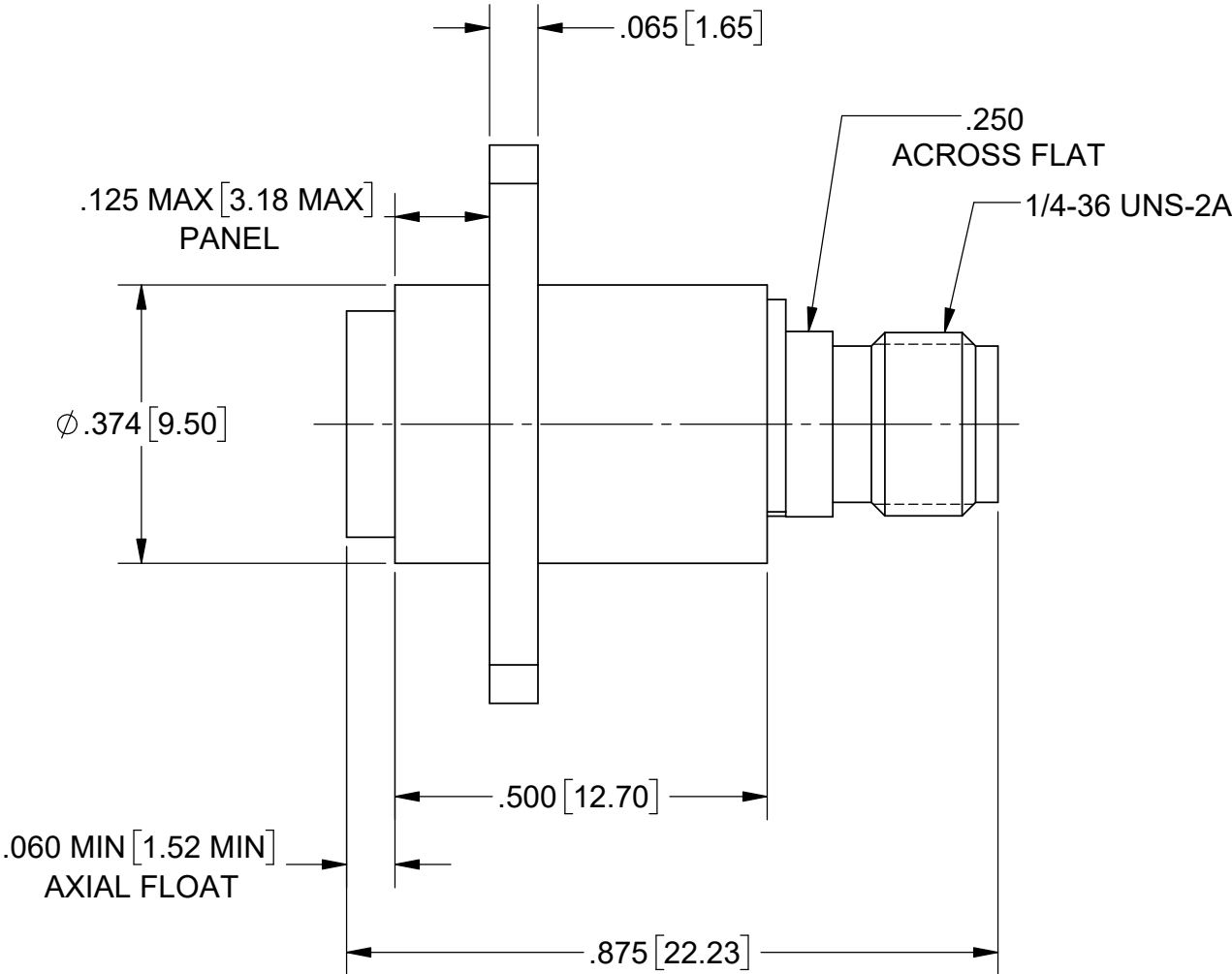
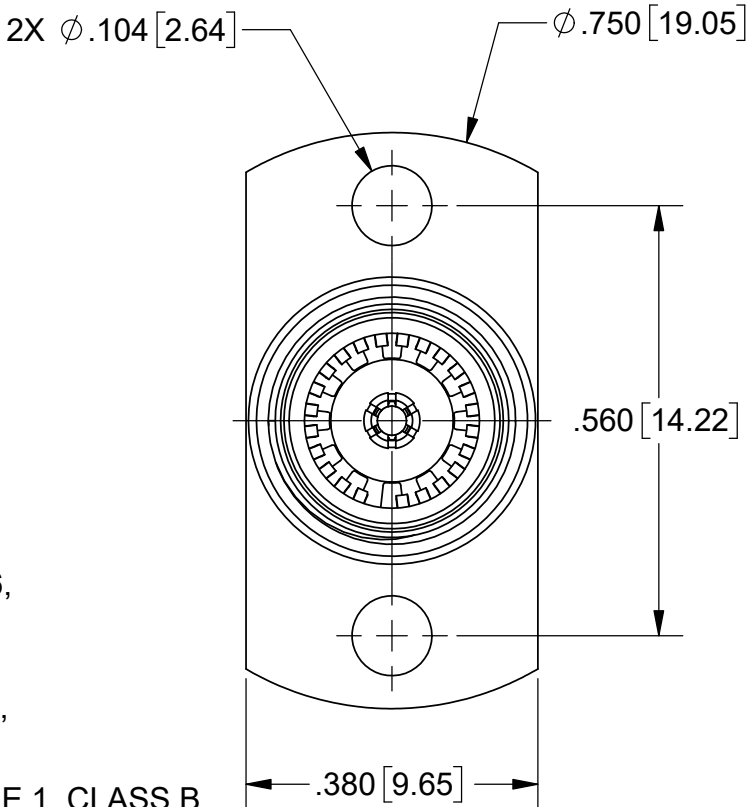
FINISH:

BODY, BUSHING, COMPRESSION SPRING, E-RING, & OUTER BODY:	PASSIVATED PER AMS-2700
--	-------------------------

CONTACT, CONTACT SLEEVE, SHIM SPRING & OUTER CONTACT:	GOLD PER ASTM B 488, TYPE II, CODE C, CLASS .76, OVER NICKEL PER AMS-QQ-N-290, CLASS 1, .00010" MIN.
---	--

PERFORMANCE:

IMPEDANCE:	50 OHMS
FREQ. RANGE:	DC TO 22.0 GHz



MATERIAL:	SEE NOTES	DIMENSIONS ARE IN INCHES TOLERANCES: FRACTIONAL: ±1/64 ANGULAR: X° ±1°0'
-----------	-----------	---