

Distribution Block

Altech CDB Compact Distribution Blocks are an ideal choice for a simplified distribution system. A lug/bolt secures the incoming cable and the screw clamp design of the block provides the outgoing connections. These provide easy connect points and ensure perfect continuity for distribution. A protective shield effectively shrouds the incoming connection.

Application Information:

Sum of outgoing currents on either side of center should not exceed half the maximum permissible incoming current.

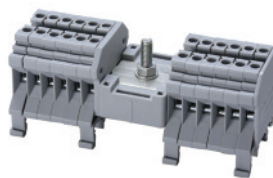
Sum of total outgoing currents should not exceed maximum permissible incoming current.

Connection for higher outgoing currents should be done through the terminal nearest to the incoming connection.



CDB4/x*

CDB4/x(1)**



Terminal Width		6 mm			6 mm		
Height & Width		45 x 43 mm			45 x 43 mm		
Stripping Length		8 mm			8 mm		
Insulation Material		Polyamide 6.6			Polyamide 6.6		
Type of Connection	Input Output	1 Lug/ M5 bolt connection for ring lug Screw clamp connection			1 Lug M5 /bolt connection for ring lug Screw clamp connection		
Approvals							
Wire Range	Input Output	10-8 AWG 22-12 AWG	6-16 sq.mm 0.2-4 sq.mm	10-8 AWG 22-10 AWG	10-8 AWG 22-12 AWG	6-16 sq.mm 0.5-4 sq.mm	10-8 AWG 22-10 AWG
Voltage Rating		600 V	800 V	600 V	600 V	800 V	600 V
Current Rating	Input Max. Individual Output	50 A 25 A	64 A 32 A	50 A 35 A	50 A 25 A	64 A 64 A	50 A 35 A
Torque	Input Output	26 lb-in 7 lb-in	2.0 Nm 0.5 Nm	26 lb-in 7 lb-in	26 lb-in 7 lb-in	2.0 Nm 0.5 Nm	26 lb-in 7 lb-in

Other Approvals



Terminal Block

Cat. No.	H x W x L (mm)	Outputs	Std. Pk.	Cat. No.	H x W x L (mm)	Outputs	Std. Pk.
CDB4/1	45 x 43 x 44	4	10	CDB4/2(1)	45 x 43 x 52	6	10
CDB4/2	45 x 43 x 56	8	10	CDB4/3(1)	45 x 43 x 58	8	10
CDB4/3	45 x 43 x 68	12	10	CDB4/4(1)	45 x 43 x 64	10	10
CDB4/4	45 x 43 x 80	16	10	CDB4/5(1)	45 x 43 x 70	12	10
CDB4/5	45 x 43 x 96	20	10	CDB4/6(1)	45 x 43 x 76	14	10
CDB4/6	45 x 43 x 108	24	10	CDB4/10(1)	45 x 43 x 100	22	10
				CDB4/11(1)	45 x 43 x 106	24	10

Cat. No. Std. Pk.

Cat. No. Std. Pk.

DIN Rail
for ordering information
refer to pages 90-91



End Stop
for ordering information
refer to page 92



CA702 50
CA802 50

CA702 50
CA802 50

Marking Tags



MT6 100

MT6 100

Warning Label

COLOR BLOCKS
(other than standard grey)

When ordering please add color suffix to Cat. No.

Example for color Red: **Cat.No./R**

Color	Ordering Suffix	
Red	R	
Yellow	Y	
Blue	BU	
Green	G	
Consult Altech for availability:		
Orange	O	
Beige	BG	
Dark Brown	DB	
Black	BL	
White	W	

* NOTE:
x signifies how many blocks are on each side of input.

** NOTE:
x signifies number of blocks on left side of input. 1 block is on right side.