



Quality Products. Service Excellence.

Water-Tight ABS & Polycarbonate Enclosures *RZ Series*

Opaque or Clear Lid, Smooth Surface



Key Features:

- Designed to meet IP65.
- Ideally suited for mounting printed circuit boards or DIN rail mounted components
- Gasketed lid with two-piece tongue & groove construction provides protection against access of oil, dust, and water
- Lid screws are self-captivating (lid holes are threaded with first installation of screws.)
- All sizes are available with clear polycarbonate lid (part numbers ending in "C")
- Easy to wall-mount using "through box-blind hole construction" whereby the wall-mounting holes are outside the gasket perimeter.

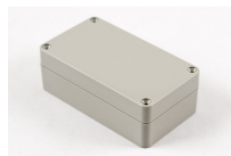
ABS Plastic Specifications:

- Suggested for indoor use
- UL Flammability rating of UL94-HB
- Color: RAL1013
- Temperature: -30 degrees C to +80 degrees C.

Polycarbonate Specifications

- Suggested for outdoor use
- UL Flammability rating of UL94-V2
- Color: RAL7035
- Temperature: -40 degrees C to +130 degrees C.

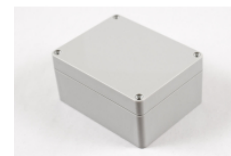
Available In Four Styles:



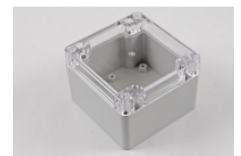
Beige ABS plastic



Beige ABS plastic with clear polycarbonate lid



Light gray polycarbonate



Light gray polycarbonate with clear polycarbonate lid



Enclosure is assembled with stainless steel screws into stainless steel inserts. Wall Mounting holes are outside the gaskets perimeter.



Internal mounting points designed for printed circuit boards or DIN rail

| Light Gray Polycarbonate | Light Gray Polycarbonate w/ Clear Polycarbonate Lid | Beige ABS Plastic | Beige ABS Plastic w/ Clear Polycarbonate Lid | Length | Width | Depth |
|--------------------------|--|-------------------|---|--------|-------|-------|
| RZ0250 | RZ0250C | RZ0362 | RZ0362C | 52 | 50 | 35 |
| RZ0256 | RZ0256C | RZ0366 | RZ0366C | 82 | 80 | 55 |
| RZ0203 | RZ0203C | RZ0304 | RZ0304C | 115 | 65 | 40 |
| RZ0205 | RZ0205C | RZ0308 | RZ0308C | 115 | 65 | 55 |
| RZ0212 | RZ0212C | RZ0311 | RZ0311C | 115 | 90 | 55 |
| RZ0214 | RZ0214C | RZ0313 | RZ0313C | 171 | 121 | 55 |
| RZ0223 | RZ0223C | RZ0340 | RZ0340C | 171 | 121 | 80 |
| RZ0269 | RZ0269C | RZ0373 | RZ0373C | 200 | 120 | 75 |
| RZ0218 | RZ0218C | RZ0317 | RZ0317C | 222 | 146 | 55 |
| RZ0232 | RZ0232C | RZ0353 | RZ0353C | 222 | 146 | 75 |

Data subject to change without notice

© 2020. Hammond Manufacturing Ltd. All rights reserved.