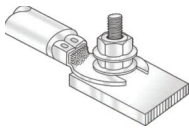


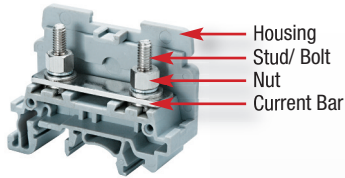
LUG/ STUD TYPE CONNECTION TECHNOLOGY



- Accepts Ring/ Fork Lug Cable Lugs
- Withstands severe vibration
- Reliable Gas-tight connection
- For very large wire sizes (up to 350 kcmil)
- High Torque values
- Secure connection
- Hinged cover featuring captive nut system guarantees quick and easy ring lug wiring



MATERIAL SPECIFICATIONS



Current Carrying Metal

Corrosion free material

- Bolt: zinc chromate passivated steel
- Nut/ Screw: zinc chromate passivated steel
- Current Bar: nickel plated copper alloy/ tin plated copper

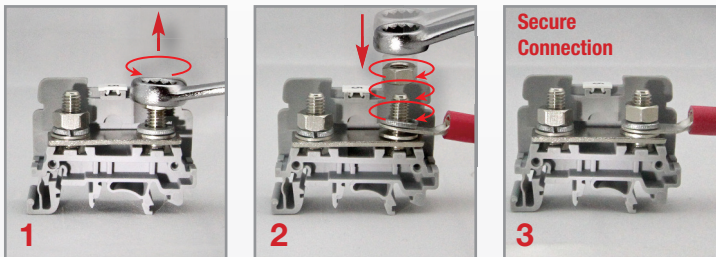
Terminal Block Housing

- Polyamide PA66 Housing
- Self-extinguishing
- High mechanical strength

Polyamide 66 Specifications

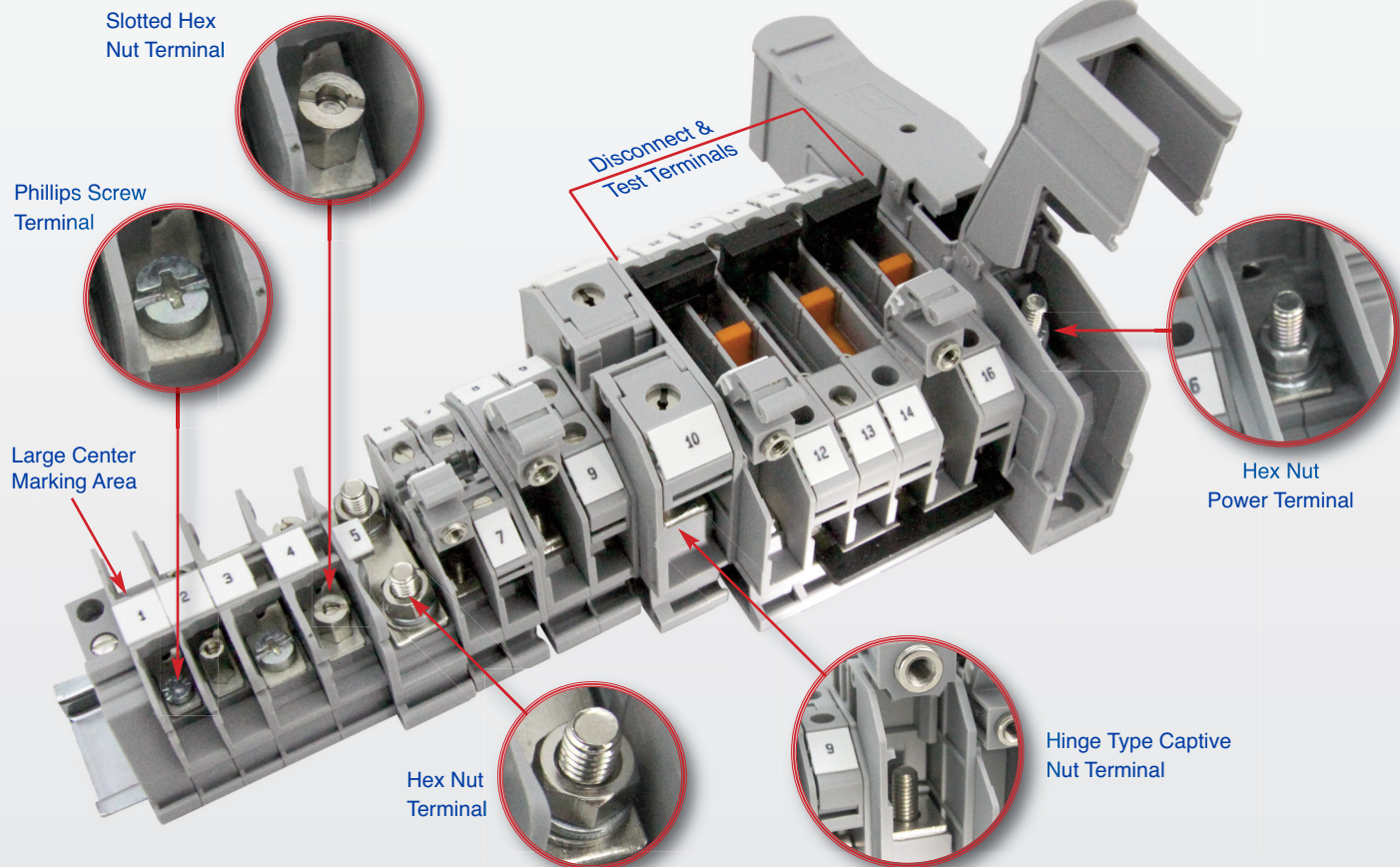
- Upper Temperature Limit: 105°C
- Lower Temperature Limit: -50°C
- Flammability UL94: V2/ V0
- Volume Resistivity: 10¹² Ω cm
- Surface Resistivity: 10¹⁰ Ω

INSTALLATION GUIDELINES



- 1 Remove screw/ nut by using wrench/ hex nut driver
- 2 Place cable with ring/ fork cable lug on stud
- 3 Tighten screw/ nut to specified torque by using wrench/hex nut driver

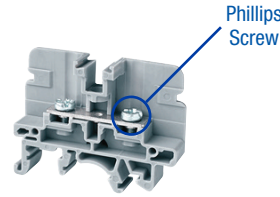
RING LUG TERMINAL CONNECTION TYPES AND FEATURES



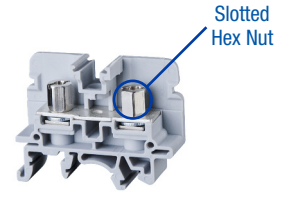
Ring Lug Barrier Terminal Blocks

FEATURES

- Phillips Screw (CBS Series)
- Slotted Hex Nut (CSB Series)
- 22-4 AWG
- Up to 85A



CBS Series
page 52

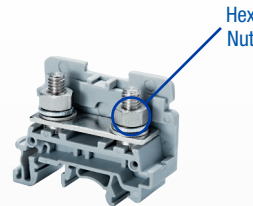


CSB Series
page 53

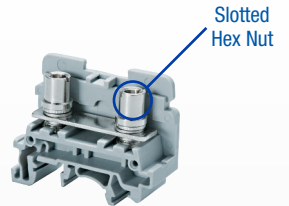
Ring Lug Stud Terminal Blocks

FEATURES

- Hex Nut (CSTSN Series)
- Slotted Hex Nut (CSTSB Series)
- 22-2 AWG
- Up to 125A



CSTSN Series
page 54

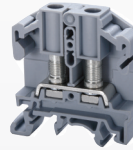


CSTSB Series
page 55

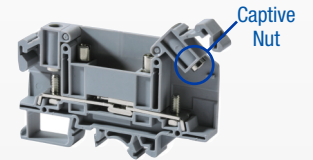
Ring Lug Hinge Terminal Blocks

FEATURES

- Captive Nut Built-In Hinge
- Feed-Through Terminals
- Disconnect Terminals
- 22-2 AWG
- Up to 115A



Feed-Through
page 56

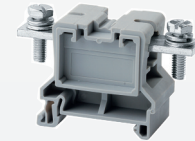
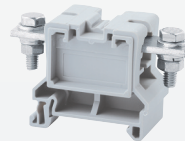


Disconnect
page 57

Ring Lug Power Terminal Blocks

FEATURES

- Nut/Bolt Connection
- Threaded Current Bar
- 10 AWG - 350 kcmil
- up to 310A

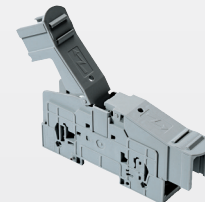
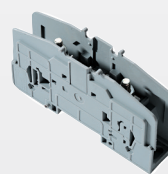


CBB Series
page 58-59

High Current Power Terminal Blocks

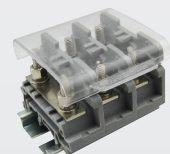
FEATURES

- Captive Bolt System
- 8-4/0 AWG
- Up to 230A
- Protective Cover
- Stackable



PTB Series
page 60

Accessories



page 61

HIGHLIGHTS

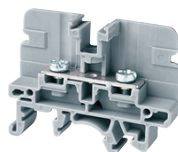
FEATURES

- Various sizes
 - Wire size up to 4 AWG
 - Current rating up to 85 A
- Suitable for standard fork type / ring lug connectors
- Version with standard Phillips Screw (**CBS Series**)
- Version with slotted nut (**CSB Series**)
- Compact design
- 2, 3, 4 pole fork type and ring lug jumpers

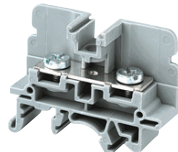
APPLICATIONS

- Applications with vibration
 - Machinery
 - Transportation
 - Vehicles
- Provides solution when ring / fork lug is needed
- Compact / Space saving Panels

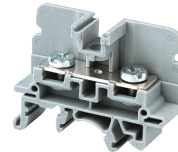
CBS3U



CBS4U



CBS5U



Dimensions & Weight

| | 50 A Ring Lug Terminal Phillips Screw Head | 65 A Ring Lug Terminal Phillips Screw Head | 85 A Ring Lug Terminal Phillips Screw Head |
|--|---|---|---|
| Width | 9 mm | 13 mm | 13 mm |
| Length | 49 mm | 49 mm | 49 mm |
| Height w DIN Rail 35 x 7.5 mm 35 x 15 mm | 38 mm 45.5 mm | 38 mm 45.5 mm | 38 mm 45.5 mm |
| Weight per piece | 7.4 g | 12.4 g | 13.8 g |

Technical Data/Ratings

| Approvals | UL US E220514 | | IEC 60947-7-1 | | UL US E220514 | | IEC 60947-7-1 | |
|------------------------------|---------------|----|-----------------------|----|---------------|----|------------------------|----|
| | CS | SP | CS | SP | CS | SP | CS | SP |
| Wire Size (solid / stranded) | 22-8 AWG | | 0.5-6 mm ² | | 16-6 AWG | | 1.5-10 mm ² | |
| Voltage Rating | 600 V | | 1000V AC/DC | | 600 V | | 1000V AC/DC | |
| Current Rating | 50 A | | 41 A | | 65 A | | 57 A | |
| Torque | 4.5 lb-in | | 0.5 Nm | | 10 lb-in | | 1.2 Nm | |
| Insulation Material | Polyamide 66 | | Polyamide 66 | | Polyamide 66 | | Polyamide 66 | |

Installation Instructions

| | | | |
|-----------------------|-------------|-------------|-------------|
| Wire Stripping Length | — | — | — |
| Screw / Stud Size | M3 | M4 | M5 |
| Screwdriver | Phillips #2 | Phillips #2 | Phillips #2 |

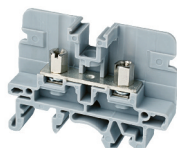
Terminal Blocks

| | Cat. No. | Std. Pk. | Cat. No. | Std. Pk. | Cat. No. | Std. Pk. |
|------------------------|--------------|----------|--------------|----------|--------------|----------|
| Grey (standard) | CBS3U | 50 | CBS4U | 50 | CBS5U | 50 |
| Red R | CBS3U/R | 50 | CBS4U/R | 50 | CBS5U/R | 50 |
| Blue BU | CBS3U/BU | 50 | CBS4U/BU | 50 | CBS5U/BU | 50 |
| Black BL | CBS3U/BL | 50 | CBS4U/BL | 50 | CBS5U/BL | 50 |
| Orange O | CBS3U/O | 50 | CBS4U/O | 50 | CBS5U/O | 50 |
| Green G | CBS3U/G | 50 | CBS4U/G | 50 | CBS5U/G | 50 |
| Yellow Y | CBS3U/Y | 50 | CBS4U/Y | 50 | CBS5U/Y | 50 |
| White W | CBS3U/W | 50 | CBS4U/W | 50 | CBS5U/W | 50 |

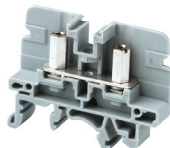
Accessories

| | Cat. No. | Std. Pk. | Cat. No. | Std. Pk. | Cat. No. | Std. Pk. |
|----------------------------|------------|------------------|------------|------------------|------------|------------------|
| End Plate | EPCBS3U | 50 | EPCBS3U | 50 | EPCBS3U | 50 |
| DIN Rail | 2511120 | 20 | 2511120 | 20 | 2511120 | 20 |
| | CA701-15/S | 20 | CA701-15/S | 20 | CA701-15/S | 20 |
| | 2511160 | 10 | 2511160 | 10 | 2511160 | 10 |
| End Stop | CA802 | 50 | CA802 | 50 | CA802 | 50 |
| Insulated Jumper Fork Type | CA514/15-2 | 100 | CA514/2-2 | 100 | CA514/2-2 | 100 |
| | CA514/15-3 | 50 | CA514/2-3 | 50 | CA514/2-3 | 50 |
| | CA514/15-4 | 50 | CA514/2-4 | 50 | CA514/2-4 | 50 |
| Insulated Jumper Ring Lug | CA514/17-2 | 100 | CA514/4-2 | 100 | CA514/4-2 | 100 |
| | CA514/17-3 | 50 | CA514/4-3 | 50 | CA514/4-3 | 50 |
| | CA514/17-4 | 50 | CA514/4-4 | 50 | CA514/4-4 | 50 |
| Internal Jumper | CA728/2 | 100 | CA772/2 | 100 | CA772/2 | 100 |
| | CA728/3 | 100 | CA772/3 | 100 | CA772/3 | 100 |
| | CA728/4 | 100 | CA772/4 | 100 | CA772/4 | 100 |
| | CA728/10 | 10 | CA772/10 | 10 | CA772/10 | 10 |
| Protective Cover | — | — | CSTSPC2 | 10 | CSTSPC2 | 10 |
| | CSTSPC2 | 10 | CSTSPC2-1 | 10 | CSTSPC2-1 | 10 |
| | CSTSPC2-1 | 10 | — | — | — | — |
| | CSTSPC1-2 | 10 | CSTSPC1-2 | 10 | CSTSPC1-2 | 10 |
| | CSTSPC1-3 | 10 | CSTSPC1-3 | 10 | CSTSPC1-3 | 10 |
| | CSTSPC1-4 | 10 | CSTSPC1-4 | 10 | CSTSPC1-4 | 10 |
| Marking Tag | MT9 | 1 Pk. (100 tags) | MT9 | 1 Pk. (100 tags) | MT9 | 1 Pk. (100 tags) |

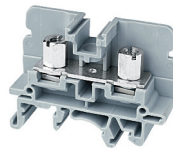
CSB3/N3U



CSB3/N3UL



CSB4/N4U



CSB5/N5U



Dimensions & Weight

| | 50 A Ring Lug Terminal Slotted Hex Nut | 50 A Ring Lug Terminal Long Slotted Hex Nut | 65 A Ring Lug Terminal Slotted Hex Nut | 85 A Ring Lug Terminal Slotted Hex Nut |
|---------------------------|---|--|---|---|
| Width | 9 mm | 9 mm | 13 mm | 13 mm |
| Length | 49 mm | 49 mm | 49 mm | 49 mm |
| Height w/ DIN Rail | 35 x 7.5 mm 35 x 15 mm | 38 mm 45.5 mm | 38 mm 45.5 mm | 38 mm 45.5 mm |
| Weight per piece | 10.2 g | 11.7 g | 19.0 g | 19.0 g |

Technical Data/Ratings

| Approvals | | | | | | | | |
|-------------------------------------|-----------------|-----------------------|-----------------|-----------------------|-----------------|------------------------|-----------------|------------------------|
| Wire Size (solid / stranded) | 22-8 AWG | 0.5-6 mm ² | 22-8 AWG | 0.5-6 mm ² | 16-6 AWG | 1.5-10 mm ² | 16-4 AWG | 1.5-16 mm ² |
| Voltage Rating | 600 V | 1000V AC/DC | 600 V | 1000V AC/DC | 600 V | 1000V AC/DC | 600 V | 1000V AC/DC |
| Current Rating | 50 A | 41 A | 50 A | 41 A | 65 A | 57 A | 85 A | 76 A |
| Torque | 4.5 lb-in | 0.5 Nm | 4.5 lb-in | 0.5 Nm | 10 lb-in | 1.2 Nm | 25 lb-in | 2.0 Nm |
| Insulation Material | Polyamide 66 | | Polyamide 66 | | Polyamide 66 | | Polyamide 66 | |

Installation Instructions

| | | | | | | | | | |
|------------------------------|---------------------|--|--|------------------------|--|--|------------------------|--|--|
| Wire Stripping Length | — | | | — | | | — | | |
| Screw / Stud Size | M3 | | | M3 | | | M4 | | |
| Screwdriver | Hex Nut Driver 7 mm | | | Flat Head 1.0 x 5.5 mm | | | Flat Head 1.0 x 5.5 mm | | |

Terminal Blocks

| | Cat. No. | Std. Pk. | Cat. No. | Std. Pk. | Cat. No. | Std. Pk. | Cat. No. | Std. Pk. |
|------------------------|-----------------|----------|------------------|----------|-----------------|----------|-----------------|----------|
| Grey (standard) | CSB3/N3U | 50 | CSB3/N3UL | 50 | CSB4/N4U | 50 | CSB5/N5U | 50 |
| Red R | CSB3/N3U/R | 50 | CSB3/N3UL/R | 50 | CSB4/N4U/R | 50 | CSB5/N5U/R | 50 |
| Blue BU | CSB3/N3U/BU | 50 | CSB3/N3UL/BU | 50 | CSB4/N4U/BU | 50 | CSB5/N5U/BU | 50 |
| Black BL | CSB3/N3U/BL | 50 | CSB3/N3UL/BL | 50 | CSB4/N4U/BL | 50 | CSB5/N5U/BL | 50 |
| Orange O | CSB3/N3U/O | 50 | CSB3/N3UL/O | 50 | CSB4/N4U/O | 50 | CSB5/N5U/O | 50 |
| Green G | CSB3/N3U/G | 50 | CSB3/N3UL/G | 50 | CSB4/N4U/G | 50 | CSB5/N5U/G | 50 |
| Yellow Y | CSB3/N3U/Y | 50 | CSB3/N3UL/Y | 50 | CSB4/N4U/Y | 50 | CSB5/N5U/Y | 50 |
| White W | CSB3/N3U/W | 50 | CSB3/N3UL/W | 50 | CSB4/N4U/W | 50 | CSB5/N5U/W | 50 |

Accessories

| | Cat. No. | Std. Pk. | Cat. No. | Std. Pk. | Cat. No. | Std. Pk. | Cat. No. | Std. Pk. |
|-----------------------------------|--|---------------------------------|--|---------------------------------|--|---------------------------------|--|---------------------------------|
| End Plate | EPCBS3U | 50 | EPCBS3U | 50 | EPCBS3U | 50 | EPCBS3U | 50 |
| DIN Rail | 2511120 CA701-15/S 2511160 | 20 20 10 | 2511120 CA701-15/S 2511160 | 20 20 10 | 2511120 CA701-15/S 2511160 | 20 20 10 | 2511120 CA701-15/S 2511160 | 20 20 10 |
| End Stop | CA802 | 50 | CA802 | 50 | CA802 | 50 | CA802 | 50 |
| Insulated Jumper Fork Type | CA514/15-2 CA514/15-3 CA514/15-4 | 100 50 50 | CA514/15-2 CA514/15-3 CA514/15-4 | 100 50 50 | CA514/2-2 CA514/2-3 CA514/2-4 | 100 50 50 | CA514/2-2 CA514/2-3 CA514/2-4 | 100 50 50 |
| Insulated Jumper Ring Lug | CA514/17-2 CA514/17-3 CA514/17-4 | 100 50 50 | CA514/17-2 CA514/17-3 CA514/17-4 | 100 50 50 | CA514/4-2 CA514/4-3 CA514/4-4 | 100 50 50 | CA514/4-2 CA514/4-3 CA514/4-4 | 100 50 50 |
| Internal Jumper | CA728/2 CA728/3 CA728/4 CA728/10 | 100 100 100 10 | CA728/2 CA728/3 CA728/4 CA728/10 | 100 100 100 10 | CA772/2 CA772/3 CA772/4 CA772/10 | 100 100 100 10 | CA772/2 CA772/3 CA772/4 CA772/10 | 100 100 100 10 |
| Protective Cover | — CSTSPC2 CSTSPC2-1 CSTSPC1-2 CSTSPC1-3 CSTSPC1-4 | — 10 10 10 10 10 | — CSTSPC2 CSTSPC2-1 CSTSPC1-2 CSTSPC1-3 CSTSPC1-4 | — 10 10 10 10 10 | CSTSPC2 CSTSPC2-1 — CSTSPC1-2 CSTSPC1-3 CSTSPC1-4 | 10 10 — 10 10 10 | CSTSPC2 CSTSPC2-1 — CSTSPC1-2 CSTSPC1-3 CSTSPC1-4 | 10 10 — 10 10 10 |
| Marking Tag | MT9 | 1 Pk. (100 tags) | MT9 | 1 Pk. (100 tags) | MT9 | 1 Pk. (100 tags) | MT9 | 1 Pk. (100 tags) |

CSTSN SERIES

STUD / RING LUG TERMINALS

STUD TYPE RING LUG TERMINAL BLOCKS

HIGHLIGHTS

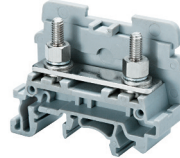
FEATURES

- Various sizes
 - Wire size up to 2 AWG
 - Current rating up to 125 A
- Suitable for standard fork type / ring lug connectors
- Version with standard Hex Nut (**CSTSN Series**)
- Version with slotted barrel (**CSTSB Series**)
- Compact design
- 2, 3, 4 pole fork type and ring lug jumpers

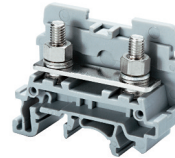
APPLICATIONS

- Applications with vibration
 - Machinery
 - Transportation
 - Vehicles
- Provides solution when ring / fork lug is needed
- Compact / Space saving Panels

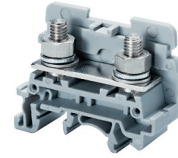
CSTSN4U



CSTSN5U



CSTSN6U



Dimensions & Weight

| | 65 A Bolt Terminal M4 Hex Nut | 80 A Bolt Terminal M5 Hex Nut | 125 A Bolt Terminal M6 Hex Nut |
|--------------------------|----------------------------------|----------------------------------|-----------------------------------|
| Width | 17 mm | 17 mm | 17 mm |
| Length | 50 mm | 50 mm | 50 mm |
| Height w DIN Rail | 35 x 7.5 mm 35 x 15 mm | 40.7 mm 48.0 mm | 40.7 mm 48.0 mm |
| Weight per piece | 21.5 g | 23.4 g | 30.4 g |

Technical Data/Ratings

| Approvals | | | | | | |
|-------------------------------------|-----------------|------------------------|-----------------|------------------------|-----------------|------------------------|
| Wire Size (solid / stranded) | 22-6 AWG | 1.5-10 mm ² | 22-4 AWG | 1.5-16 mm ² | 22-2 AWG | 1.5-35 mm ² |
| Voltage Rating | 600 V | 1000V AC/DC | 600 V | 1000V AC/DC | 600 V | 1000V AC/DC |
| Current Rating | 65 A | 57 A | 80 A | 76 A | 125 A | 125 A |
| Torque | 14 lb-in | 1.2 Nm | 25 lb-in | 2.0 Nm | 25 lb-in | 3.0 Nm |
| Insulation Material | Polyamide 66 | | Polyamide 66 | | Polyamide 66 | |

Installation Instructions

| | | | |
|------------------------------|---------------------|---------------------|---------------------|
| Wire Stripping Length | — | — | — |
| Screw / Stud Size | M4 | M5 | M6 |
| Screwdriver | Hex Nut Driver 7 mm | Hex Nut Driver 8 mm | Hex Nut Driver 9 mm |

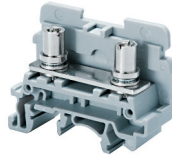
Terminal Blocks

| | Cat. No. | Std. Pk. | Cat. No. | Std. Pk. | Cat. No. | Std. Pk. |
|------------------------|----------------|----------|----------------|----------|----------------|----------|
| Grey (standard) | CSTSN4U | 100 | CSTSN5U | 100 | CSTSN6U | 100 |
| Red R | CSTSN4U/R | 100 | CSTSN5U/R | 100 | CSTSN6U/R | 100 |
| Blue BU | CSTSN4U/BU | 100 | CSTSN5U/BU | 100 | CSTSN6U/BU | 100 |
| Black BL | CSTSN4U/BL | 100 | CSTSN5U/BL | 100 | CSTSN6U/BL | 100 |
| Orange O | CSTSN4U/O | 100 | CSTSN5U/O | 100 | CSTSN6U/O | 100 |
| Green G | CSTSN4U/G | 100 | CSTSN5U/G | 100 | CSTSN6U/G | 100 |
| Yellow Y | CSTSN4U/Y | 100 | CSTSN5U/Y | 100 | CSTSN6U/Y | 100 |
| White W | CSTSN4U/W | 100 | CSTSN5U/W | 100 | CSTSN6U/W | 100 |

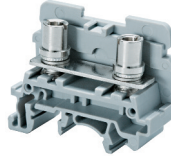
Accessories

| | Cat. No. | Std. Pk. | Cat. No. | Std. Pk. | Cat. No. | Std. Pk. |
|-----------------------------------|----------------------|------------------|----------------------|------------------|----------------------|------------------|
| End Plate | EPCSTSU | 50 | EPCSTSU | 50 | EPCSTSU | 50 |
| DIN Rail | 2511120 | 20 | 2511120 | 20 | 2511120 | 20 |
| | CA701-15/S | 20 | CA701-15/S | 20 | CA701-15/S | 20 |
| | 2511160 | 10 | 2511160 | 10 | 2511160 | 10 |
| End Stop | CA802 | 50 | CA802 | 50 | CA802 | 50 |
| Insulated Jumper Fork Type | 2 pole CA514/1-2 | 100 | 2 pole CA514/1-2 | 100 | 2 pole CA514/7-2 | 100 |
| | 3 pole CA514/1-3 | 50 | 3 pole CA514/1-3 | 50 | 3 pole CA514/7-3 | 50 |
| | 4 pole CA514/1-4 | 50 | 4 pole CA514/1-4 | 50 | 4 pole CA514/7-4 | 50 |
| Jumper Ring Lug | 2 pole CA514/3-2 | 100 | 2 pole CA514/3-2 | 100 | 2 pole CA514/8-2 | 100 |
| | 3 pole CA514/3-3 | 50 | 3 pole CA514/3-3 | 50 | 3 pole CA514/8-3 | 50 |
| | 4 pole CA514/3-4 | 50 | 4 pole CA514/3-4 | 50 | 4 pole CA514/8-4 | 50 |
| Protective Cover | 2 Terminal CSTSPC2 | 10 | 2 Terminal CSTSPC2 | 10 | 2 Terminal CSTSPC2 | 10 |
| | 3 Terminal CSTSPC2-1 | 10 | 3 Terminal CSTSPC2-1 | 10 | 3 Terminal CSTSPC2-1 | 10 |
| | 4 Terminal — | — | 4 Terminal — | — | 4 Terminal — | — |
| | 100 mm CSTSPC1-2 | 10 | 100 mm CSTSPC1-2 | 10 | 100 mm CSTSPC1-2 | 10 |
| | 200 mm CSTSPC1-3 | 10 | 200 mm CSTSPC1-3 | 10 | 200 mm CSTSPC1-3 | 10 |
| | 300 mm CSTSPC1-4 | 10 | 300 mm CSTSPC1-4 | 10 | 300 mm CSTSPC1-4 | 10 |
| Marking Tag | MT2B4 | 1 Pk. (100 tags) | MT2B4 | 1 Pk. (100 tags) | MT2B4 | 1 Pk. (100 tags) |

CSTSB4U



CSTSB5U



Dimensions & Weight

| | CSTSB4U | CSTSB5U |
|-------------------|---------------------------|--------------------|
| Width | 17 mm | 17 mm |
| Length | 50 mm | 50 mm |
| Height w DIN Rail | 35 x 7.5 mm 35 x 15 mm | 40.7 mm 48.0 mm |
| Weight per piece | 24 g | 25.5 g |

Technical Data/Ratings

| Approvals | | | | |
|------------------------------|--------------|------------------------|--------------|------------------------|
| Wire Size (solid / stranded) | 22-6 AWG | 1.5-10 mm ² | 22-4 AWG | 1.5-16 mm ² |
| Voltage Rating | 600 V | 1000V AC/DC | 600 V | 1000V AC/DC |
| Current Rating | 65 A | 57 A | 80 A | 76 A |
| Torque | 14 lb-in | 1.2 Nm | 25 lb-in | 2.0 Nm |
| Insulation Material | Polyamide 66 | | Polyamide 66 | |

Installation Instructions

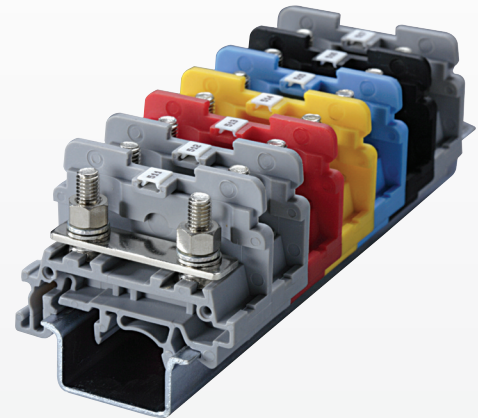
| | | |
|-----------------------|------------------------|------------------------|
| Wire Stripping Length | — | — |
| Screw / Stud Size | M4 | M5 |
| Screwdriver | Flat Head 1.0 x 5.5 mm | Flat Head 1.0 x 5.5 mm |

Terminal Blocks

| | Cat. No. | Std. Pk. | Cat. No. | Std. Pk. |
|------------------------|----------------|----------|----------------|----------|
| Grey (standard) | CSTSB4U | 100 | CSTSB5U | 100 |
| Red R | CSTSB4U/R | 100 | CSTSB5U/R | 100 |
| Blue BU | CSTSB4U/BU | 100 | CSTSB5U/BU | 100 |
| Black BL | CSTSB4U/BL | 100 | CSTSB5U/BL | 100 |
| Orange O | CSTSB4U/O | 100 | CSTSB5U/O | 100 |
| Green G | CSTSB4U/G | 100 | CSTSB5U/G | 100 |
| Yellow Y | CSTSB4U/Y | 100 | CSTSB5U/Y | 100 |
| White W | CSTSB4U/W | 100 | CSTSB5U/W | 100 |

Accessories

| | Cat. No. | Std. Pk. | Cat. No. | Std. Pk. |
|----------------------------|------------|------------------|------------|------------------|
| End Plate | EPCSTSU | 50 | EPCSTSU | 50 |
| DIN Rail | 2511120 | 20 | 2511120 | 20 |
| | CA701-15/S | 20 | CA701-15/S | 20 |
| | 2511160 | 10 | 2511160 | 10 |
| End Stop | CA802 | 50 | CA802 | 50 |
| Insulated Jumper Fork Type | CA514/1-2 | 100 | CA514/1-2 | 100 |
| | CA514/1-3 | 50 | CA514/1-3 | 50 |
| | CA514/1-4 | 50 | CA514/1-4 | 50 |
| Insulated Jumper Ring Lug | CA514/3-2 | 100 | CA514/3-2 | 100 |
| | CA514/3-3 | 50 | CA514/3-3 | 50 |
| | CA514/3-4 | 50 | CA514/3-4 | 50 |
| Protective Cover | CSTSPC2 | 10 | CSTSPC2 | 10 |
| | CSTSPC2-1 | 10 | CSTSPC2-1 | 10 |
| | — | — | — | — |
| | CSTSPC1-2 | 10 | CSTSPC1-2 | 10 |
| | CSTSPC1-3 | 10 | CSTSPC1-3 | 10 |
| | CSTSPC1-4 | 10 | CSTSPC1-4 | 10 |
| Marking Tag | MT2B4 | 1 Pk. (100 tags) | MT2B4 | 1 Pk. (100 tags) |



STH SERIES

STUD / RING LUG TERMINALS

HINGE TYPE RING LUG TERMINAL BLOCKS

HIGHLIGHTS

FEATURES

- Bolt Feed Through Terminals
- Suitable for standard fork type / ring lugs
- Captive nut system
- Only standard flat head screw driver needed to tighten connection
- IP20 touch proof terminals with hinged plastic cover
- 2, 3, 4 pole fork type and ring lug jumpers

APPLICATIONS

- Applications with vibration
 - Machinery
 - Transportation
 - Vehicles
- Provides solution when ring / fork lug is needed



Dimensions & Weight

| | 9 mm | 11 mm | 18 mm |
|-------------------|---------------------------|--------------------|--------------------|
| Width | 9 mm | 11 mm | 18 mm |
| Length | 47 mm | 46 mm | 64 mm |
| Height w DIN Rail | 35 x 7.5 mm 35 x 15 mm | 47.3 mm 54.8 mm | 52.2 mm 59.0 mm |
| Weight per piece | 15.0 g | 62.5 g | 57.8 g |

Technical Data/Ratings

| Approvals | | | | | | |
|------------------------------|--------------|-----------------------|--------------|-----------------------|--------------|------------------------|
| Wire Size (solid / stranded) | 22-8 AWG | 1.5-6 mm ² | 22-8 AWG | 1.5-6 mm ² | 22-2 AWG | 1.5-35 mm ² |
| Voltage Rating | 600 V | 1000V AC/DC | 600 V | 1000V AC/DC | 600 V | 1000V AC/DC |
| Current Rating | 50 A | 41 A | 50 A | 41 A | 115 A | 125 A |
| Torque | 4.5 lb-in | 0.5 Nm | 14 lb-in | 1.2 Nm | 25 lb-in | 3.0 Nm |
| Insulation Material | Polyamide 66 | | Polyamide 66 | | Polyamide 66 | |

Installation Instructions

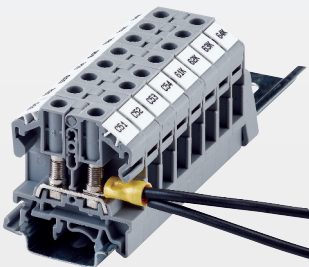
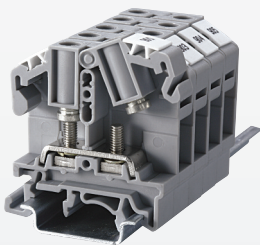
| | | | |
|-----------------------|----------------------|----------------------|------------------------|
| Wire Stripping Length | — | — | — |
| Screw / Stud Size | M3 | M4 | M6 |
| Screwdriver | Flat Head 0.8 x 4 mm | Flat Head 0.8 x 4 mm | Flat Head 1.0 x 5.5 mm |

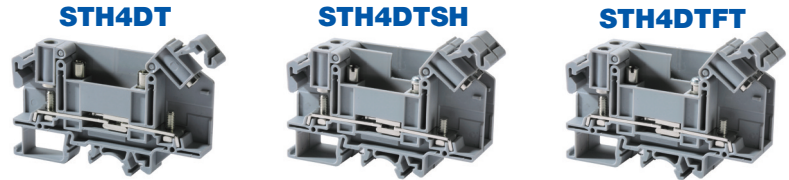
Terminal Blocks

| | Cat. No. | Std. Pk. | Cat. No. | Std. Pk. | Cat. No. | Std. Pk. |
|------------------------|-------------|----------|-------------|----------|-------------|----------|
| Grey (standard) | STH3 | 100 | STH4 | 50 | STH6 | 50 |
| Red R | STH3/R | 100 | STH4/R | 50 | STH6/R | 50 |
| Blue BU | STH3/BU | 100 | STH4/BU | 50 | STH6/BU | 50 |
| Black BL | STH3/BL | 100 | STH4/BL | 50 | STH6/BL | 50 |
| Orange O | STH3/O | 100 | STH4/O | 50 | STH6/O | 50 |
| Green G | STH3/G | 100 | STH4/G | 50 | STH6/G | 50 |
| Yellow Y | STH3/Y | 100 | STH4/Y | 50 | STH6/Y | 50 |
| White W | STH3/W | 100 | STH4/W | 50 | STH6/W | 50 |

Accessories

| | Cat. No. | Std. Pk. | Cat. No. | Std. Pk. | Cat. No. | Std. Pk. |
|-----------------------------|------------|------------------|------------|------------------|------------|------------------|
| End Plate | EPSTH3 | 50 | EPSTH4 | 50 | EPSTH6 | 50 |
| DIN Rail | 2511120 | 20 | 2511120 | 20 | 2511120 | 20 |
| | CA701-15/S | 20 | CA701-15/S | 20 | CA701-15/S | 20 |
| | 2511160 | 10 | 2511160 | 10 | 2511160 | 10 |
| End Stop | CA702 | 100 | CA702 | 100 | CA702 | 100 |
| | CA802 | 50 | CA802 | 50 | CA802 | 50 |
| | CA202 | 50 | CA202 | 50 | CA202 | 50 |
| Jumpers Fork Type | CA512/15-2 | 100 | CA512/13-2 | 100 | — | — |
| | CA512/15-3 | 50 | CA512/13-3 | 50 | — | — |
| | CA512/15-4 | 50 | CA512/13-4 | 50 | — | — |
| Insulated Jumpers Fork Type | CA514/15-2 | 100 | CA514/13-2 | 100 | — | — |
| | CA514/15-3 | 50 | CA514/13-3 | 50 | — | — |
| | CA514/15-4 | 50 | CA514/13-4 | 50 | — | — |
| Jumpers Ring Lug | CA512/17-2 | 100 | CA512/14-2 | 100 | — | — |
| | CA512/17-3 | 50 | CA512/14-3 | 50 | — | — |
| | CA512/17-4 | 50 | CA512/14-4 | 50 | — | — |
| Insulated Jumpers Ring Lug | CA514/17-2 | 100 | CA514/14-2 | 100 | — | — |
| | CA514/17-3 | 50 | CA514/14-3 | 50 | — | — |
| | CA514/17-4 | 50 | CA514/14-4 | 50 | — | — |
| Internal Jumpers | CA773/2 | 100 | — | — | CA774/2 | 100 |
| | CA773/3 | 50 | — | — | CA774/3 | 50 |
| | CA773/4 | 50 | — | — | CA774/4 | 50 |
| | CA773/10 | 10 | — | — | — | — |
| Marking Tag | MT8 | 1 Pk. (100 tags) | MT10 | 1 Pk. (100 tags) | MT16 | 1 Pk. (100 tags) |





Dimensions & Weight

| | Disconnect Terminal Block Hinge Type | Double Disconnect Terminal Block | Feed-Through Terminal Block Disconnect Profile |
|-------------------|--------------------------------------|----------------------------------|--|
| Width | 11 mm | 22 mm | 11 mm |
| Length | 86 mm | 86 mm | 86 mm |
| Height w DIN Rail | 35 x 7.5 mm 35 x 15 mm | 52.2 mm 59.0 mm | 52.2 mm 59.0 mm |
| Weight per piece | 42.8 g | 42.3 g | 36.6 g |

Technical Data/Ratings

| Approvals | | | | | | |
|------------------------------|-----------------|-----------------------|-----------------|-----------------------|-----------------|-----------------------|
| Wire Size (solid / stranded) | 22-8 AWG | 1.5-6 mm ² | 22-8 AWG | 1.5-6 mm ² | 22-8 AWG | 1.5-6 mm ² |
| Voltage Rating | 600 V | 1000V AC/DC | 300 V | 1000V AC/DC | 600 V | 1000V AC/DC |
| Current Rating | 35 A | 41 A | 25 A | 34 A | 50 A | 41 A |
| Torque | 14 lb-in | 1.2 Nm | 14 lb-in | 1.2 Nm | 14 lb-in | 1.2 Nm |
| Insulation Material | Polyamide 66 | | Polyamide 66 | | Polyamide 66 | |

Installation Instructions

| | | | | | | |
|-----------------------|----------------------|--|----------------------|--|----------------------|--|
| Wire Stripping Length | - | | - | | - | |
| Screw / Stud Size | M4 | | M4 | | M4 | |
| Screwdriver | Flat Head 0.8 x 4 mm | | Flat Head 0.8 x 4 mm | | Flat Head 0.8 x 4 mm | |

Terminal Blocks

| | Cat. No. | Std. Pk. | Cat. No. | Std. Pk. | Cat. No. | Std. Pk. |
|-------------|---------------|-----------|-----------------|-----------|-----------------|------------|
| Grey | STH4DT | 50 | STH4DTSH | 24 | STH4DTFT | 100 |

Accessories

| | Cat. No. | Std. Pk. | Cat. No. | Std. Pk. | Cat. No. | Std. Pk. | |
|-----------------------------|----------------------------------|--|----------------------------------|--|----------------------------------|--|-----------------|
| End Plate | EPSTH4DT | 50 | EPSTH4DT | 50 | EPSTH4DT | 50 | |
| DIN Rail | 2511120 CA701-15/S 2511160 | 20 20 10 | 2511120 CA701-15/S 2511160 | 20 20 10 | 2511120 CA701-15/S 2511160 | 20 20 10 | |
| End Stop | CA702 CA802 CA202 | 100 50 50 | CA702 CA802 CA202 | 100 50 50 | CA702 CA802 CA202 | 100 50 50 | |
| Jumpers Fork Type | 2 pole 3 pole 4 pole | CA512/13-2 CA512/13-3 CA512/13-4 | 100 50 50 | CA512/13-2 CA512/13-3 CA512/13-4 | 100 50 50 | CA512/13-2 CA512/13-3 CA512/13-4 | 100 50 50 |
| Insulated Jumpers Fork Type | 2 pole 3 pole 4 pole | CA514/13-2 CA514/13-3 CA514/13-4 | 100 50 50 | CA514/13-2 CA514/13-3 CA514/13-4 | 100 50 50 | CA514/13-2 CA514/13-3 CA514/13-4 | 100 50 50 |
| Jumpers Ring Lug | 2 pole 3 pole 4 pole | CA512/14-2 CA512/14-3 CA512/14-4 | 100 50 50 | CA512/14-2 CA512/14-3 CA512/14-4 | 100 50 50 | CA512/14-2 CA512/14-3 CA512/14-4 | 100 50 50 |
| Insulated Jumpers Ring Lug | 2 pole 3 pole 4 pole | CA514/14-2 CA514/14-3 CA514/14-4 | 100 50 50 | CA514/14-2 CA514/14-3 CA514/14-4 | 100 50 50 | CA514/14-2 CA514/14-3 CA514/14-4 | 100 50 50 |
| Insulated Alternate Jumpers | 3 pole 4 pole | CA514/14-3A CA514/14-4A | 10 10 | CA514/14-3A CA514/14-4A | 10 10 | CA514/14-3A CA514/14-4A | 10 10 |
| Shorting Plug | QJ11/2 | 25 | QJ11/2 | 25 | - | - | |
| Lock Out Cap | LCSTH4DT | 25 | LCSTH4DT | 25 | - | - | |
| Marking Tag | MT10 | 1 Pk. (100 tags) | MT10 | 1 Pk. (100 tags) | MT10 | 1 Pk. (100 tags) | |

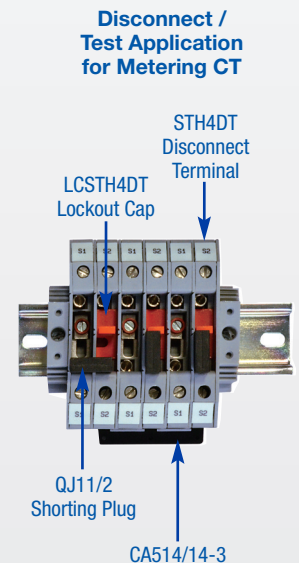
HIGHLIGHTS

FEATURES

- Bolt Disconnect Terminals
- Disconnect (STH4DT)
- 2 Shorted Disconnect Terminals (STH4DTSH)
- Feed-Through with same profile (STH4DTFT)
- Suitable for standard fork type / ring lugs
- Captive nut system
- IP20 touch proof terminals with hinged plastic cover
- 2, 3, 4 pole fork type and ring lug jumpers

APPLICATIONS

- Disconnect / Test Applications
- Measuring / Control Circuit
- Utility Instruments and Transformer Applications
- Meter Replacement
- External Current Measurement



CBB SERIES

STUD / RING LUG TERMINALS

RING LUG POWER TERMINAL BLOCKS

HIGHLIGHTS

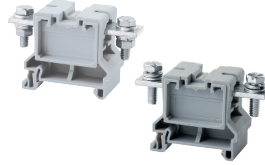
FEATURES

- High Current up to 310A
- Feed-Through Terminals
 - Nut / Bolt version
 - Version with threaded current bar (LS) for fast wiring without 2 wrenches
- Wire crimped into ring / fork lug on to the flat current bar
- Special Mounting foot design for tight fit on rail
- Protective Cover in various length
- 2, 3 pole jumper bars

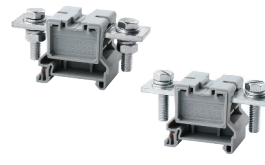
APPLICATIONS

- High Current Power Applications
- Large size wires
- Power Distribution Feeding Applications
- Provides solution when ring / fork lug is needed

CBB35/50 CBB35/50LS



CBB70 CBB70LS



CBB95 CBB95LS



Dimensions & Weight

| | 150 A Feed Through Power Terminal | 175 A Feed Through Power Terminal | 230 A Feed Through Power Terminal |
|-------------------|-----------------------------------|-----------------------------------|-----------------------------------|
| Width | 32 mm | 38 mm | 38 mm |
| Length | 75 mm | 92 mm | 92 mm |
| Height w DIN Rail | 35 x 7.5 mm 35 x 15 mm | 47.5 mm 54.5 mm | 47.5 mm 54.5 mm |
| Weight per piece | 82.0 g | 157.5 g | 193.0 g |

Technical Data/Ratings

| Approvals | | | | | | |
|------------------------------|-----------------------------------|--|----------------------------------|--|-----------------------------------|--|
| Wire Size (solid / stranded) | 10-1/0 AWG 6-50.0 mm ² | | 8-2/0 AWG 6-70.0 mm ² | | 8-4/0 AWG 16-95.0 mm ² | |
| Voltage Rating | 600 V 1000V AC/DC | | 600 V 1000V AC/DC | | 600 V 1000V AC/DC | |
| Current Rating | 150 A 150 A | | 175 A 192 A | | 230 A 232 A | |
| Torque | 27 lb-in 3.0Nm | | 54.5 lb-in 6.0 Nm | | 90 lb-in 10.0 Nm | |
| Insulation Material | Polyamide 66 | | | | | |

Installation Instructions

| | | | | | | |
|-----------------------|-----------------------------------|--|-----------------------------------|--|------------------------------------|--|
| Wire Stripping Length | - | | - | | - | |
| Screw / Stud Size | M6 | | M8 | | M10 | |
| Screwdriver | Wrench M6 Flat Head 1 x 5.5 mm | | Wrench M8 Flat Head 1 x 1.5 mm | | Wrench M10 Flat Head 1 x 1.5 mm | |

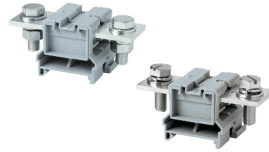
Terminal Blocks

| | Cat. No. | Std. Pk. | Cat. No. | Std. Pk. | Cat. No. | Std. Pk. |
|---|-------------------|-----------|----------------|-----------|----------------|-----------|
| Grey Nut & Bolt configuration Threaded Current Bar | CBB35/50 | 10 | CBB70 | 10 | CBB95 | 10 |
| | CBB35/50LS | 10 | CBB70LS | 10 | CBB95LS | 10 |

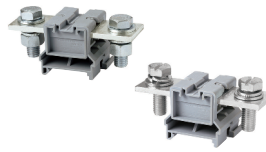
Accessories

| | Cat. No. | Std. Pk. | Cat. No. | Std. Pk. | Cat. No. | Std. Pk. | |
|-----------------------|--|--|--|--|--|---|-------------------------------------|
| Partition Plate | PPCBB | 50 | PPCBB | 50 | PPCBB1 | 50 | |
| DIN Rail | 2511120 CA701-15/S | 20 20 | 2511120 CA701-15/S | 20 20 | 2511120 CA701-15/S | 20 20 | |
| End Stop | CA102 CA202 | 50 50 | CA102 CA202 | 50 50 | CA102 CA202 | 50 50 | |
| Protective Cover | 70 mm 80 mm 100 mm 130 mm 160 mm 200 mm 250 mm | CBBPC1/70 CBBPC1/80 CTSPC2-1 CBBPC1/130 CBBPC1/160 CBBPC1/200 CBBPC1/250 | 10 10 10 10 10 10 10 | CBBPC1/70 CBBPC1/80 CTSPC2-1 CBBPC1/130 CBBPC1/160 CBBPC1/200 CBBPC1/250 | 10 10 10 10 10 10 10 | - - CBBPC2/100 - CBBPC2/160 CBBPC2/200 CBBPC2/250 | - - 10 - 10 10 10 |
| Permanent Jumper Bars | 2 pole 3 pole | CA790/2 CA790/3 | 10 10 | CA791/2 CA791/3 | 10 10 | CA791/2 CA791/3 | 10 10 |
| Marking Tag | MT12 | 1 Pk. (100 tags) | MT16 | 1 Pk. (100 tags) | MT16 | 1 Pk. (100 tags) | |

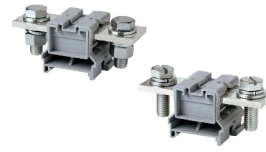
**CBB120
CBB120LS**



**CBB150
CBB150LS**



**CBB185
CBB185LS**



Dimensions & Weight

| | 255 A Feed Through Power Terminal | 285 A Feed Through Power Terminal | 310 A Feed Through Power Terminal |
|--|-----------------------------------|-----------------------------------|-----------------------------------|
| Width | 48 mm | 48 mm | 48 mm |
| Length | 100 mm | 110 mm | 110 mm |
| Height w DIN Rail 35 x 7.5 mm 35 x 15 mm | 47.3 mm 54.5 mm | 47.3 mm 54.5 mm | 47.3 mm 54.5 mm |
| Weight per piece | 244.0 g | 316.0 g | 319.4 g |

Technical Data/Ratings

| Approvals | | | | | | |
|-------------------------------------|--------------------|------------------------|--------------------|------------------------|--------------------|------------------------|
| Wire Size (solid / stranded) | 8-250 KCMIL | 16-120 mm ² | 8-300 KCMIL | 16-150 mm ² | 8-350 KCMIL | 16-185 mm ² |
| Voltage Rating | 600 V | 1000V AC/DC | 600 V | 1000V AC/DC | 600 V | 1000V AC/DC |
| Current Rating | 255 A | 269 A | 285 A | 309 A | 310 A | 353 A |
| Torque | 90 lb-in | 10.0 Nm | 127 lb-in | 14.0 Nm | 127 lb-in | 14.0 Nm |
| Insulation Material | Polyamide 66 | | Polyamide 66 | | Polyamide 66 | |

Installation Instructions

| | | | |
|------------------------------|------------------------------------|------------------------------------|------------------------------------|
| Wire Stripping Length | — | — | — |
| Screw / Stud Size | M10 | M12 | M12 |
| Screwdriver | Wrench M10 Flat Head 1 x 1.5 mm | Wrench M12 Flat Head 1 x 1.5 mm | Wrench M12 Flat Head 1 x 1.5 mm |

Terminal Blocks

| | Cat. No. | Std. Pk. | Cat. No. | Std. Pk. | Cat. No. | Std. Pk. |
|--------------------------|-----------------|-----------|-----------------|-----------|-----------------|-----------|
| Grey | | | | | | |
| Nut & Bolt configuration | CBB120 | 10 | CBB150 | 10 | CBB185 | 10 |
| Threaded Current Bar | CBB120LS | 10 | CBB150LS | 10 | CBB185LS | 10 |

Accessories

| | Cat. No. | Std. Pk. | Cat. No. | Std. Pk. | Cat. No. | Std. Pk. |
|---|--|----------------------|--|----------------------|--|----------------------|
| Partition Plate | PPCBB1 | 50 | PPCBB1 | 50 | PPCBB1 | 50 |
| DIN Rail | 2511120 CA701-15/S | 20 20 | 2511120 CA701-15/S | 20 20 | 2511120 CA701-15/S | 20 20 |
| End Stop | CA102 CA202 | 50 50 | CA102 CA202 | 50 50 | CA102 CA202 | 50 50 |
| Protective Cover 100 mm for installing on 160 mm PPCBB & PPCBB1 200 mm 250 mm | CBBPC2/100 CBBPC2/160 CBBPC2/200 CBBPC2/250 | 10 10 10 10 | CBBPC2/100 CBBPC2/160 CBBPC2/200 CBBPC2/250 | 10 10 10 10 | CBBPC2/100 CBBPC2/160 CBBPC2/200 CBBPC2/250 | 10 10 10 10 |
| Permanent Jumper Bars 2 pole 3 pole | CA793/2 CA793/3 | 10 10 | CA794/2 CA794/3 | 10 10 | CA794/2 CA794/3 | 10 10 |
| Marking Tag | MT16 | 1 Pk. (100 tags) | MT16 | 1 Pk. (100 tags) | MT16 | 1 Pk. (100 tags) |

PTB SERIES

STUD / RING LUG TERMINALS

HIGH CURRENT POWER TERMINAL BLOCKS

HIGHLIGHTS

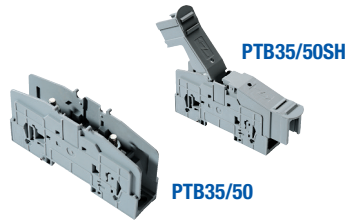
FEATURES

- Panel / DIN Rail mountable
- High Current up to 230A
- Finger safe protective cover (PSPTBXX)
- Modular / stackable design
- 2, 3, 4 pole jumper system

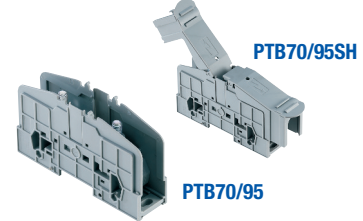
APPLICATIONS

- High Current Power Applications
- Large size wires
- Power Distribution Feeding Applications
- Provides solution when ring / fork lug is needed

PTB35/50 PTB35/50SH



PTB70/95 PTB70/95SH



Dimensions & Weight

| | 25 mm | 32 mm |
|-------------------|---|----------------------------------|
| Width | 25 mm | 32 mm |
| Length | 113 / 169 mm | 130 / 192 mm |
| Height w DIN Rail | 61.0 / 66.5 mm 35 x 7.5 mm 35 x 15 mm | 76.6 / 78.0 mm 84.5 / 86.0 mm |
| Weight per piece | 112.0 / 130.5 g | 174.4 / 198.2 g |

Technical Data/Ratings

| Approvals | | | | |
|------------------------------|--------------|------------------------|--------------|------------------------|
| Wire Size (solid / stranded) | 8-2 AWG | 1.5-50 mm ² | 8-4/0 AWG | 1.5-95 mm ² |
| Voltage Rating | 600 V | 1000V AC/DC | 600 V | 1000V AC/DC |
| Current Rating | 115 A | 150 A | 230 A | 232 A |
| Torque | 27 lb-in | 3.0 Nm | 87 lb-in | 10.0 Nm |
| Insulation Material | Polyamide 66 | | Polyamide 66 | |

Installation Instructions

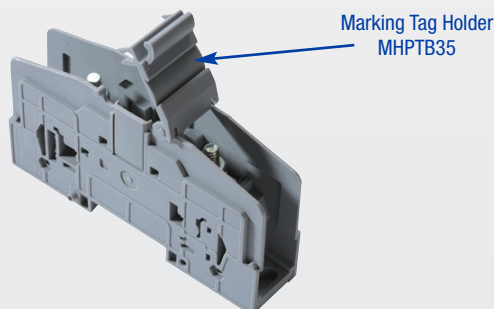
| | | |
|-----------------------|----------------------|----------------------|
| Wire Stripping Length | — | — |
| Screw / Stud Size | M6 | M8 |
| Screwdriver | Hex Nut Driver 10 mm | Hex Nut Driver 13 mm |

Terminal Blocks

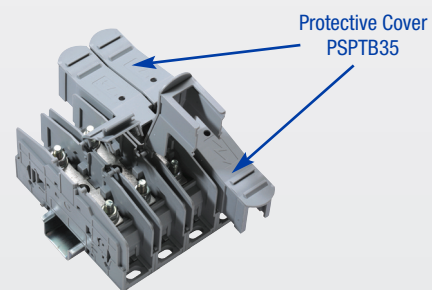
| | Cat. No. | Std. Pk. | Cat. No. | Std. Pk. |
|------|------------|----------|------------|----------|
| Grey | PTB35/50 | 10 | PTB70/95 | 10 |
| | PTB35/50SH | 10 | PTB70/95SH | 10 |

Accessories

| | Cat. No. | Std. Pk. | Cat. No. | Std. Pk. |
|---|-------------------------------|------------------|----------------------------------|------------------|
| Protective Cover | PSPTB35 | 20 | PSPTB70 | 10 |
| DIN Rail | 2511120 CA701-15/S | 20 20 | 2511120 CA701-15/S | 20 20 |
| End Stop | CA102 CA202 | 50 50 | CA102 CA202 | 50 50 |
| Jumper System 2 pole 3 pole 4 pole | CA703/9 CA704/9 CA705/9 | 10 10 10 | CA703/11 CA704/11 CA705/11 | 10 10 10 |
| Marking Tag | MT9 | 1 Pk. (100 tags) | MT9 | 1 Pk. (100 tags) |
| Marking Tag Holder | MHPTB35 | | MHPTB35 | |



Marking Tag Holder
MHPTB35



Protective Cover
PSPTB35

Fork Type Jumper



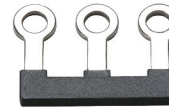
Insulated Fork Type Jumper



Ring Lug Jumper



Insulated Ring Lug Jumper



Internal Jumper



Alternate Jumper for STH4DT Series



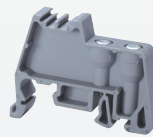
| Terminal Block Series | Poles | Fork Type Jumper | | Insulated Fork Type Jumper | | Ring Lug Jumper | | Insulated Ring Lug Jumper | | Internal Jumper | | Alternate Jumper for STH4DT Series | |
|-----------------------|---------|------------------|----------|----------------------------|----------|-----------------|----------|---------------------------|----------|-----------------|----------|------------------------------------|----------------------------------|
| | | Cat. No. | Std. Pk. | Cat. No. | Std. Pk. | Cat. No. | Std. Pk. | Cat. No. | Std. Pk. | Cat. No. | Std. Pk. | Cat. No. | Std. Pk. |
| CBS3U | 2 Pole | CA512/15-2 | 100 | CA514/15-2 | 100 | CA512/17-2 | 100 | CA514/17-2 | 100 | CA728/2 | 50 | | |
| CSB3/N3U | 3 Pole | CA512/15-3 | 50 | CA514/15-3 | 50 | CA512/17-3 | 50 | CA514/17-3 | 50 | CA728/3 | 50 | | N/A |
| CSB3/N3UL | 4 Pole | CA512/15-4 | 50 | CA514/15-4 | 50 | CA512/17-4 | 50 | CA514/17-4 | 50 | CA728/4 | 50 | | N/A |
| STH3 | 10 Pole | | | | | | | | | CA728/10 | 10 | | |
| CBS4U | 2 Pole | CA512/2-2 | 100 | CA514/2-2 | 100 | CA512/4-2 | 100 | CA514/4-2 | 100 | CA772/2 | 100 | | |
| CBS5U | 3 Pole | CA512/2-3 | 50 | CA514/2-3 | 50 | CA512/4-3 | 50 | CA514/4-3 | 50 | CA772/3 | 50 | | N/A |
| CSB4/N4UL | 4 Pole | CA512/2-4 | 50 | CA514/2-4 | 50 | CA512/4-4 | 50 | CA514/4-4 | 50 | CA772/4 | 50 | | N/A |
| CSB5/N5U | 10 Pole | | | | | | | | | CA772/10 | 10 | | |
| CSTSN4U | 2 Pole | CA512/1-2 | 100 | CA514/1-2 | 100 | CA512/3-2 | 100 | CA514/3-2 | 100 | | | | N/A |
| CSTSN5U | 3 Pole | CA512/1-3 | 50 | CA514/1-3 | 50 | CA512/3-3 | 50 | CA514/3-3 | 50 | | | | N/A |
| CSTSN6U | 4 Pole | CA512/1-4 | 50 | CA514/1-4 | 50 | CA512/3-4 | 50 | CA514/3-4 | 50 | | | | N/A |
| CSTSB4U | 4 Pole | | | | | | | | | | | | |
| CSTSB5U | | | | | | | | | | | | | |
| CSTSN6U | 2 Pole | CA512/7-2 | 100 | CA514/7-2 | 100 | CA512/8-2 | 100 | CA514/8-2 | 100 | | | | N/A |
| | 3 Pole | CA512/7-3 | 50 | CA514/7-3 | 50 | CA512/8-3 | 50 | CA514/8-3 | 50 | | | | N/A |
| | 4 Pole | CA512/7-4 | 50 | CA514/7-4 | 50 | CA512/8-4 | 50 | CA514/8-4 | 50 | | | | N/A |
| STH4 | 2 Pole | CA512/13-2 | 100 | CA514/13-2 | 100 | CA512/14-2 | 100 | CA514/14-2 | 100 | | | | |
| STH4DT | 3 Pole | CA512/13-3 | 50 | CA514/13-3 | 50 | CA512/14-3 | 50 | CA514/14-3 | 50 | | | | N/A |
| STH4DTFT | 4 Pole | CA512/13-4 | 50 | CA514/13-4 | 50 | CA512/14-4 | 50 | CA514/14-4 | 50 | | | | CA514/14-3A 10 CA514/14-4A 10 |
| STH6 | 2 Pole | | | | | | | | | CA774/2 | 100 | | |
| | 3 Pole | N/A | | N/A | | N/A | | N/A | | CA774/3 | 50 | | |
| | 4 Pole | | | | | | | | | CA774/4 | 50 | | |

END STOPS

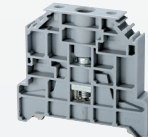
CA802



CA707



CA202

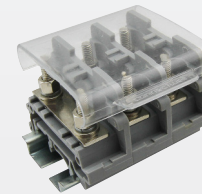


| Cat. No | Dimensions | Std. Pk. |
|---------|----------------|----------|
| CA802 | 32 x 45 x 8 mm | 50 |

| Cat. No | Dimensions | Std. Pk. |
|---------|----------------|----------|
| CA702 | 34 x 45 x 9 mm | 50 |

| Cat. No | Dimensions | Std. Pk. |
|---------|--------------------|----------|
| CA202 | 44.5 x 50 x 9.5 mm | 50 |

ENDPLATES / PROTECTIVE COVERS



For CBS, CSB, CSTS Series

| Terminal Block | Cat. No | Dimensions | Std. Pk. |
|----------------|----------|--------------------|----------|
| CBS Series | EPCBS3U | 26.2 x 49 x 1.5 mm | 50 |
| CSB Series | | | |
| CSTSN Series | EPCSTSU | 31 x 50 x 1.5 mm | 50 |
| CSTSB Series | | | |
| STH3 | EPSTH3 | 34 x 47 x 1.5 mm | 50 |
| STH4 | EPSTH4 | 39.5 x 46 x 1.5 mm | 50 |
| STH6 | EPSTH6 | 51 x 63.5 x 1.5 mm | 50 |
| STH4DT | EPSTH4DT | 37.5 x 86 x 1.5 mm | 50 |

| Length | Cat. No. | Std. Pk. |
|--------|-----------|----------|
| 100mm | CSTSPC1-2 | 10 |
| 200mm | CSTSPC1-3 | 10 |
| 300mm | CSTSPC1-4 | 10 |