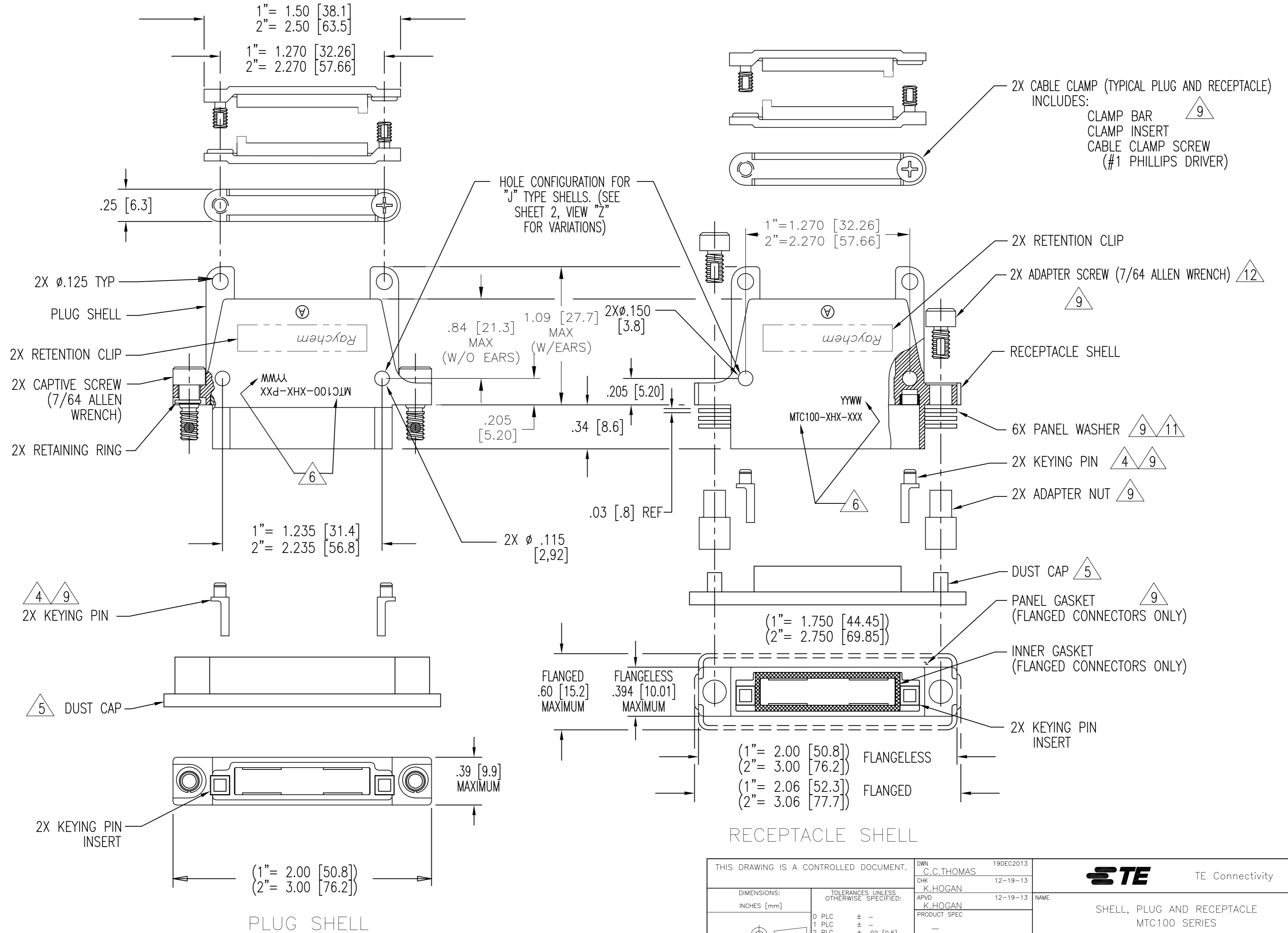


THIS DRAWING IS UNPUBLISHED. RELEASED FOR PUBLICATION  
 © COPYRIGHT - By - ALL RIGHTS RESERVED.

| LOC |             | DIST        |  | REVISIONS |     |      |  |
|-----|-------------|-------------|--|-----------|-----|------|--|
| P   | LTR         | DESCRIPTION |  | DATE      | DWN | APVD |  |
| W   | REV PER ECO | 13-019993   |  | 12-19-13  | CT  | KH   |  |



|  |               |                  |            |                            |                      |
|--|---------------|------------------|------------|----------------------------|----------------------|
| THIS DRAWING IS A CONTROLLED DOCUMENT. |               | DWN              | 19DEC2013  | TE Connectivity            |                      |
| DIMENSIONS: INCHES [mm]                |               | CHK              | C.C.THOMAS | NAME                       |                      |
| TOLERANCES UNLESS OTHERWISE SPECIFIED: |               | APVD             | K.HOGAN    | SHELL, PLUG AND RECEPTACLE |                      |
| 0 PLC                                  | ± -           | PRODUCT SPEC     | K.HOGAN    | MTC100 SERIES              |                      |
| 1 PLC                                  | ± -           | APPLICATION SPEC | 12-19-13   | SIZE                       | CAGE CODE            |
| 2 PLC                                  | ± .02 [0.5]   |                  |            | A2                         | 00779                |
| 3 PLC                                  | ± .005 [0.13] |                  |            | SCALE                      | DRAWING NO           |
| 4 PLC                                  | ± -           |                  |            | NTS                        | C=MTC100-XHX-XXX-XXX |
| ANGLES                                 | ± -           |                  |            | SHEET                      | 1 of 3               |
| MATERIAL                               | FINISH        | WEIGHT           | -          | REV                        | W                    |
|  |               | CUSTOMER DRAWING |            |                            |                      |

THIS DRAWING IS UNPUBLISHED. RELEASED FOR PUBLICATION  
 © COPYRIGHT - By - ALL RIGHTS RESERVED.

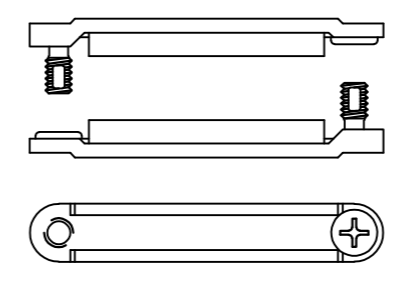
| LOC |     | DIST         |      | REVISIONS |      |   |   |
|-----|-----|--------------|------|-----------|------|---|---|
| P   | LTR | DESCRIPTION  | DATE | DWN       | APVD |   |   |
| -   | -   | SEE SHEET #1 | -    | -         | -    | - | - |

1. PART NUMBER VARIABLES: (NOT ALL POSSIBLE CONFIGURATIONS SHOWN ON THIS DRAWING ARE AVAILABLE AS STANDARD PRODUCTS. PLEASE CHECK WITH RAYCHEM TO CONFIRM AVAILABILITY.)
- MTC100-XHX-XXX-XXX
- MODIFICATIONS (see table I) (THIS SPACE BLANK IF NO MODIFICATION IS APPLICABLE)
    - 1= W/O CABLE CLAMP AND W/O EARS ON SHELL
    - 2= WITH CABLE CLAMP AND EARS ON SHELL
    - 3= W/O CABLE CLAMP AND WITH EARS
    - 4= WITH FLAT CABLE CLAMP (SEE VIEW V) AND EARS ON SHELL
  - 1= BLACK ANODIZED (WHITE MARKING)
  - 2= ELECTROLESS NICKEL (BLACK MARKING)
  - 3= CADMIUM OVER NICKEL UNDERPLATE (BLACK MARKING)
  - P= PLUG
  - R= FLANGELESS RECEPTACLE
  - F= FLANGED RECEPTACLE: STANDARD ("J" TYPE) HAS NON CONDUCTIVE FLUOROSILICONE GASKET SHIELDED ("S" TYPE) HAS CONDUCTIVE FLUOROSILICONE GASKET
  - 1= 1 INCH
  - 2= 2 INCH
  - J= STANDARD TYPE
  - S= SHIELDED
  - Y= SPECIAL TYPE: REFER TO INDIVIDUAL SPECIFICATION CONTROL DRAWINGS FOR DESCRIPTIONS

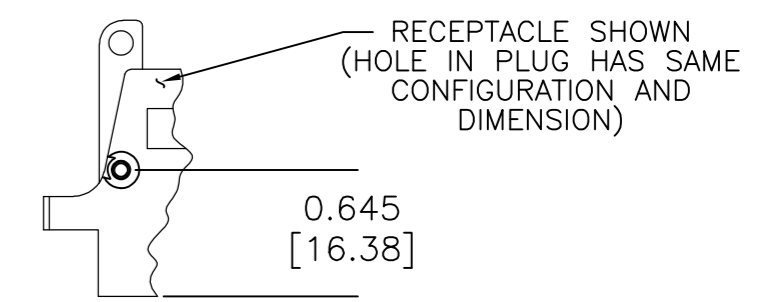
2. MATERIAL:
- A) SHELL ALUMINUM ALLOY PER ASTM B85
  - B) RETENTION CLIP COPPER ALLOY 172 PER ASTM B194
  - C) ADAPTER SCREW OR CAP SCREW STAINLESS STEEL PER SAE-AMS-QQ-S-763, 300 SERIES
  - D) ADAPTER NUT OR RETAINER BUSHING STAINLESS STEEL PER SAE-AMS-QQ-S-763, 300 SERIES
  - E) PANEL OR LOCK WASHER STAINLESS STEEL PER SAE-AMS-QQ-S-763 OR ASTM B240, 300 SERIES
  - F) KEYING PIN HIGH GRADE POLYARYLENE THERMOPLASTIC, MOLDED
  - G) KEY PINS INSERT HIGH GRADE POLYARYLENE THERMOPLASTIC, MOLDED
  - H) CLAMP BAR STAINLESS STEEL PER SAE-AMS-QQ-S-763, 300 SERIES
  - J) CLAMP INSERT SILICONE ELASTOMER PER MIL-R-25988
  - K) CAPTIVE SCREW STAINLESS STEEL PER SAE-AMS-QQ-S-763, 300 SERIES
  - L) RETAINING RING COPPER ALLOY 172 PER ASTM B194

3. FINISH:

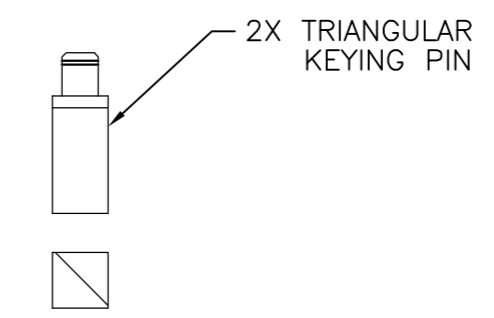
|                                    | APPLIES TO NICKEL PLATED CONNECTORS                       | APPLIES TO CADMIUM PLATED CONNECTORS                       | APPLIES TO BLACK ANODIZED CONNECTORS                      |
|------------------------------------|---|--|---|
| A) SHELL                           | NICKEL PLATED PER SAE-AMS-C-26074 CLASS 3, GRADE B        | CADMIUM PLATED PER SAE-AMS-QQ-P-416 OVER NICKEL UNDERPLATE | BLACK ANODIZED PER MIL-A-8625, TYPE II, CLASS 2           |
| B) RETENTION CLIP                  | NICKEL PLATED PER SAE-AMS-C-26074 CLASS 2, .00002 MINIMUM | CADMIUM PLATED PER SAE-AMS-QQ-P-416                        | NICKEL PLATED PER SAE-AMS-C-26074 CLASS 2, .00002 MINIMUM |
| C) ADAPTER OR CAP SCREW            | PASSIVATED PER SAE-AMS-2700                               | CADMIUM PLATED PER SAE-AMS-QQ-P-416                        | PASSIVATED PER SAE-AMS-2700                               |
| D) ADAPTER NUT OR RETAINER BUSHING | PASSIVATED PER SAE-AMS-2700                               | CADMIUM PLATED PER SAE-AMS-QQ-P-416                        | PASSIVATED PER SAE-AMS-2700                               |
| E) PANEL OR LOCK WASHER            | PASSIVATED PER SAE-AMS-2700                               | CADMIUM PLATED PER SAE-AMS-QQ-P-416                        | PASSIVATED PER SAE-AMS-2700                               |
| F) CLAMP BAR                       | PASSIVATED PER SAE-AMS-2700                               | CADMIUM PLATED PER SAE-AMS-QQ-P-416                        | PASSIVATED PER SAE-AMS-2700                               |
| G) CAPTIVE SCREW                   | PASSIVATED PER SAE-AMS-2700                               | CADMIUM PLATED PER SAE-AMS-QQ-P-416                        | PASSIVATED PER SAE-AMS-2700                               |
| H) RETAINING RING                  | NICKEL PLATED PER SAE-AMS-C-26074                         | CADMIUM PLATED PER SAE-AMS-QQ-P-416                        | NICKEL PLATED PER SAE-AMS-C-26074                         |



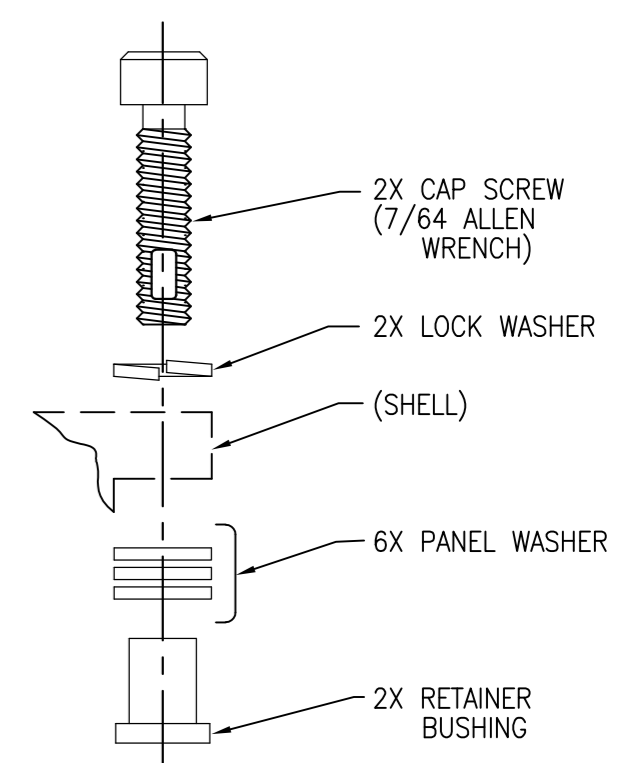
FLAT CABLE CLAMP  
VIEW "V"



RECEPTACLE SHOWN (HOLE IN PLUG HAS SAME CONFIGURATION AND DIMENSION)  
0.645 [16.38]  
HOLE CONFIGURATION FOR ALL "S" TYPE SHELLS AND FLANGED "J" TYPE RECEPTACLE SHELLS  
VIEW "Z"



2X TRIANGULAR KEYING PIN  
APPLIES TO -014 MODIFICATION (see table I)  
VIEW "W"



MTC50 HARDWARE APPLIES TO -020 MODIFICATION (see table I)  
VIEW "Y"

TABLE III

| PANEL THICKNESS         | NUMBER OF PANEL WASHERS FOR EACH FASTENER |
|-------------------------|---|
| 0.031/0.036 [0.8]/[0.9] | 2   |
| 0.062/0.067 [1.5]/[1.7] | 1   |
| 0.093/0.097 [2.3]/[2.4] | 0   |

- 4. FOR MOUNTING / MATING AND KEYING INFORMATION, SEE RAYCHEM DRAWING D652-0012.
- 5. DUST CAP SUPPLIED WITH EACH PLUG OR RECEPTACLE. NO DUST CAPS ARE SUPPLIED WHEN SHELLS ARE SHIPPED TO CUSTOMER SPECIFICATION NUMBER 991006.
- 6. APPROPRIATE PART NUMBER AND DATE CODE ARE STAMPED APPROXIMATELY AS SHOWN.
- 7. THESE PARTS MEET THE REQUIREMENTS OF RAYCHEM SPECIFICATION C-6111.
- 8. FLANGED RECEPTACLE CONNECTORS PROPERLY MATED AND TORQUED TO 9 INCH POUNDS WILL EXHIBIT AN AIR LEAK RATE NOT EXCEEDING .5 CC / SECOND AT 30 PSI AND 25° C. (APPLICABLE ONLY TO FLANGED RECEPTACLES WITH PIN INSERTS)
- 9. THESE ITEMS ARE SUPPLIED UNASSEMBLED.
- 10. SEE TABLE II & TABLE 4 SHEET 3, WEIGHTS ARE WITHOUT DUST CAP.
- 11. THIS RECEPTACLE IS REAR PANEL MOUNTED BY REMOVING AS MANY PANEL WASHERS AS REQUIRED TO ACCOMMODATE THE THICKNESS OF THE PANEL BEING USED. (SEE TABLE III)
- 12. RECEPTACLE ADAPTER SCREWS (CAP SCREWS) ARE TO BE TORQUED TO 15±1 INCH-LBS (1.0±0.07 N-M)

TABLE I (MODIFICATIONS)

| MODIFICATION DASH NUMBER | DESCRIPTION   |
|--------------------------|---|
| -001                     | SAME AS STANDARD ASSEMBLY WITH EARS EXCEPT WITHOUT CABLE CLAMPS   |
| -007                     | SAME AS STANDARD ASSEMBLY EXCEPT METAL PARTS ARE PLATED CADMIUM OVER NICKEL, SUPPLIED WITH MTC50 MOUNTING/ MATING HARDWARE (SEE VIEW "Y") |
| -014                     | SAME AS STANDARD EXCEPT ADDITIONALLY TRIANGULAR KEYING PINS INCLUDED (SEE VIEW "W")   |
| -020                     | SAME AS STANDARD EXCEPT SUPPLIED WITH MTC50 MOUNTING/MATING HARDWARE (SEE VIEW "Y")   |
| -028                     | SAME AS STANDARD ASSEMBLY EXCEPT SUPPLIED WITHOUT HARDWARE  |

THIS DRAWING IS A CONTROLLED DOCUMENT.

|                  |            |               |  |
|------------------|------------|---------------|--|
| DWN              | 19DEC2013  |               | TE Connectivity                          |
| CHK              | C.C.THOMAS |               |  |
| APVD             | K.HOGAN    |               |  |
| PRODUCT SPEC     | K.HOGAN    |               |  |
| APVD             | 12-19-13   | NAME          | SHELL, PLUG AND RECEPTACLE MTC100 SERIES |
| APPLICATION SPEC |            | SIZE          | A2                                       |
| WEIGHT           |            | CAGE CODE     | 00779                                    |
| CUSTOMER DRAWING |            | DRAWING NO    | C=MTC100-XHX-XXX-XXX                     |
|                  |            | RESTRICTED TO |  |
|                  |            | SCALE         | NTS                                      |
|                  |            | SHEET         | 2 of 3                                   |
|                  |            | REV           | W  |

THIS DRAWING IS UNPUBLISHED. RELEASED FOR PUBLICATION  
 © COPYRIGHT - By - ALL RIGHTS RESERVED.


| LOC |     | DIST         |      | REVISIONS |      |  |  |
|-----|-----|--------------|------|-----------|------|--|--|
| P   | LTR | DESCRIPTION  | DATE | DWN       | APVD |  |  |
| -   | -   | SEE SHEET #1 | -    | -         | -    |  |  |

THE FOLLOWING TABLE CONSISTS OF WEIGHTS FOR THESE SPECIFIC PART NUMBERS.

| PART NUMBER    | WEIGHT<br>MAXIMUM GRAMS |
|----------------|-------------------------|
| MTC100-JH1-F32 | 30.8                    |
| MTC100-JH1-P32 | 23.8                    |
| MTC100-JH1-R32 | 27.3                    |
| MTC100-JH2-F32 | 43.7                    |
| MTC100-JH2-P32 | 34.2                    |
| MTC100-JH2-R32 | 38.3                    |
| MTC100-SH1-F33 | 24.2 *                  |
| MTC100-SH1-P33 | 16.1 *                  |
| MTC100-SH1-R33 | 20.3 *                  |
| MTC100-SH2-F33 | 32.3 *                  |
| MTC100-SH2-P33 | 22.7 *                  |
| MTC100-SH2-R33 | 27.0 *                  |

| PART NUMBER    | WEIGHT<br>MAXIMUM GRAMS |
|----------------|-------------------------|
| MTC100-JH1-F22 | 30.8                    |
| MTC100-JH1-P22 | 23.8                    |
| MTC100-JH1-R22 | 27.3                    |
| MTC100-JH2-F22 | 43.7                    |
| MTC100-JH2-P22 | 34.2                    |
| MTC100-JH2-R22 | 38.3                    |
| MTC100-SH1-F23 | 24.2 *                  |
| MTC100-SH1-P23 | 16.1 *                  |
| MTC100-SH1-R23 | 20.3 *                  |
| MTC100-SH2-F23 | 32.3 *                  |
| MTC100-SH2-P23 | 22.7 *                  |
| MTC100-SH2-R23 | 27.0 *                  |

\* = WEIGHT DOES NOT INCLUDE CABLE CLAMP

|   |  |                                |   |                    |
|---|--|--------------------------------|---|--------------------|
| THIS DRAWING IS A CONTROLLED DOCUMENT.  |  | DWN<br>C.C.THOMAS<br>19DEC2013 |  TE Connectivity |                    |
| DIMENSIONS:<br>INCHES [mm]  |  | CHK<br>K.HOGAN<br>12-19-13     |   |                    |
| TOLERANCES UNLESS OTHERWISE SPECIFIED:<br>0 PLC ± -<br>1 PLC ± -<br>2 PLC ± .02 [0.5]<br>3 PLC ± .005 [0.13]<br>4 PLC ± -<br>ANGLES ± - |  | APVD<br>K.HOGAN<br>12-19-13    | NAME<br>SHELL, PLUG AND RECEPTACLE<br>MTC100 SERIES   |                    |
| MATERIAL  |  | PRODUCT SPEC                   | SIZE<br>A2  | CAGE CODE<br>00779 |
| FINISH  |  | APPLICATION SPEC               | DRAWING NO<br>MTC100-XHX-XXX-XXX  | RESTRICTED TO      |
|   |  | WEIGHT<br>-                    | SCALE<br>NTS  | SHEET<br>3 of 3    |
|   |  | CUSTOMER DRAWING               | REV<br>W  |                    |

MTC100-XHX-XXX-XXX