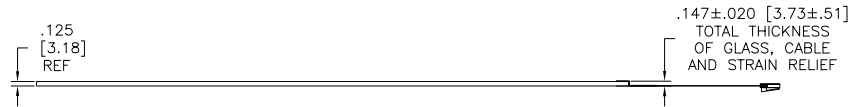
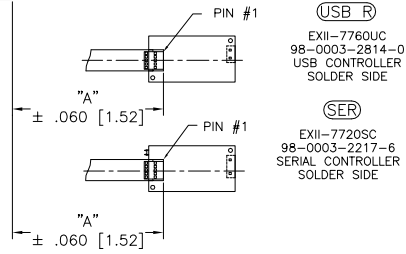
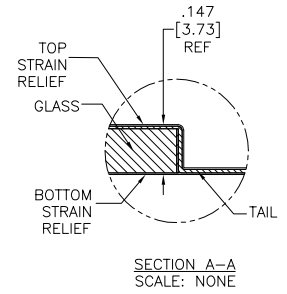
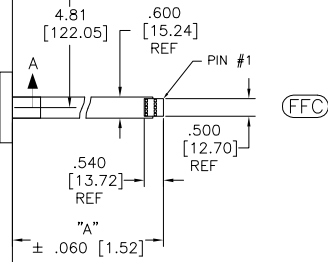
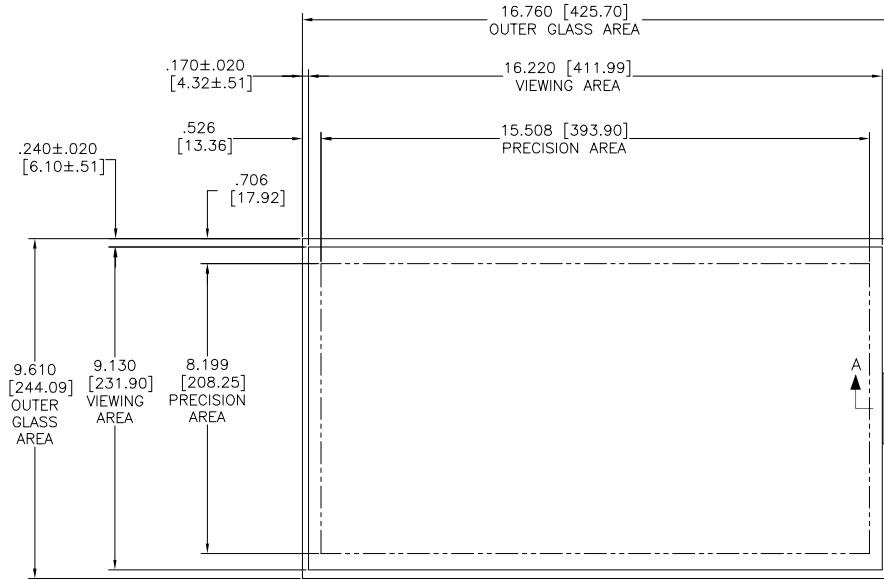


OGA DIAGONAL: 19.32 [490.72]
 VA DIAGONAL: 18.61 [472.77]
 PA DIAGONAL: 17.54 [445.57]

TOP LEVEL NUMBER	US NUMBER	TYPE	DIM "A" (TOTAL GLASS TO CONNECTOR)	A/G FINISH	PROD SPEC
17-9591-205	98-0003-2274-7	FFC	8.00" [203.20]	AG500	23655
17-9591-226	98-0003-3265-4	USB R	8.00" [203.20]	AG500	23655
17-9591-227	98-0003-3266-2	SER	8.00" [203.20]	AG500	23655
N/A	98-1100-0099-3	FFC	8.00" [203.20]	WC100	34523
N/A	98-1100-0100-9	USB R	8.00" [203.20]	WC100	34523



NOTES:

- WEIGHT OF GLASS IN GRAMS: 825±10% HOUSING ORIENTED WITH LATCH DOWN

PINOUT	
1	UL
2	UR
3	SHLD
4	LR
5	LL

UNITS	INCHES [MM]
TOLERANCES UNLESS OTHERWISE SPECIFIED	
.X	± .03 [.76]
.XX	± .03 [.76]
.XXX	± .015 [.38]
ANGLES	±1°

3M 3M TOUCH SYSTEMS
 METHUEN, MA
 USA

© COPYRIGHT 2004
 THIS DOCUMENT IS COPYRIGHTED PROPERTY OF THE 3M COMPANY AND MAY NOT BE REPRODUCED WITHOUT 3M WRITTEN PERMISSION OR USED OR DISCLOSED FOR OTHER THAN 3M AUTHORIZED PURPOSES.

THIRD ANGLE PROJECTION

DO NOT SCALE DRAWING

SCALE 1 = 1

REV	CHANGE NOTICE	DATE	SB
F	REVISED PER CO 036100	2/13	SB

TITLE	
MARKETING DRAWING SCT32NN 18.61" W	

DRWN	DATE	SHEET
S.Berard	10/09/08	1 OF 1

SIZE	DOCUMENT NO.	REV
C	TSD-36237	F