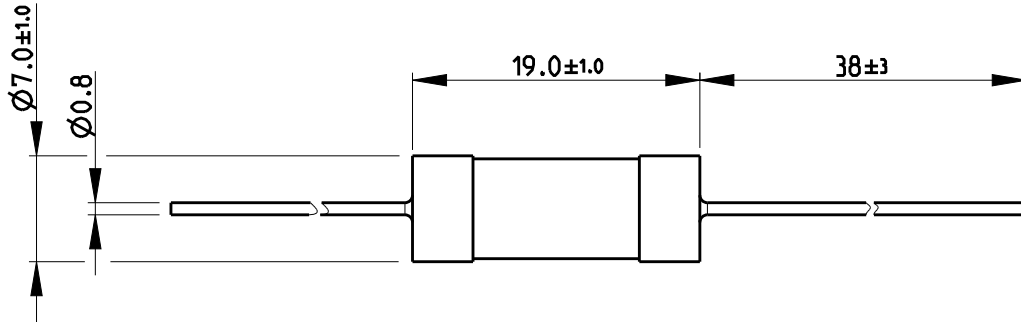


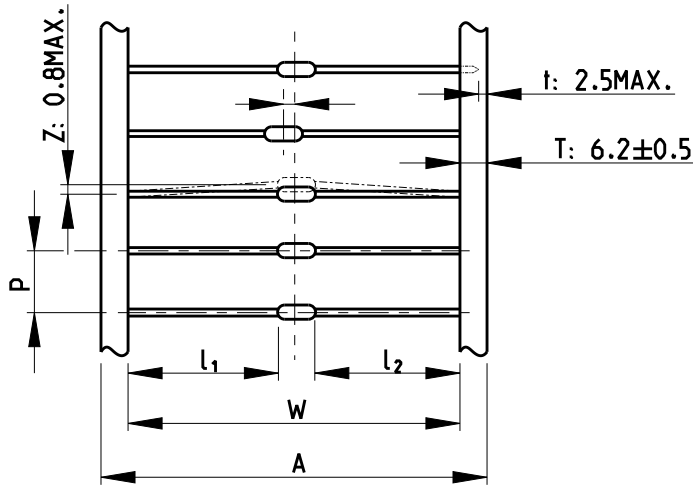
| LOC | DIST | REVISIONS | | | | | |
|-----|------|-----------|-----|---------------------------|-----------|-----|------|
| E | B | P | LTR | DESCRIPTION | DATE | DWN | APVD |
| | | | BA1 | REVISED PER ECO-11-005150 | 29MAR2011 | RK | HMR |
| | | | BA2 | REVISED PER ECR-18-014264 | 07SEP2018 | SR | CB |

FOR FURTHER INFORMATION SEE DATA SHEET FOR CCR SERIES-CERAMIC COMPOSITION RESISTORS

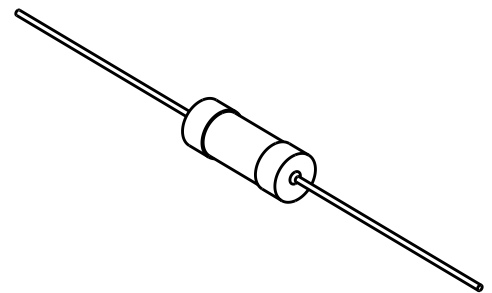


NOTE:
DIMENSIONS SHOWN ABOVE ONLY REFER TO PRODUCT SUPPLIED AS BULK.
FOR TAPED OPTION REFER TO TABLE AND DIAGRAM BELOW.

TAPE PACKAGING GRAPHIC



RoHS Compliant



SCALE 1:1

| PACKAGING STYLE | DIMENSIONS(mm) | | | | |
|-----------------|----------------|------------|--------|--------------------------------|-----------------------|
| | W | P | A | l ₁ -l ₂ | ACCUMULATED TOLERANCE |
| CCR1/2 | 52±1 | 5.08±0.38 | 65±1.0 | 1.0Max. | 101.6±2mm/Px20 |
| CCR1/CCR2 | 63±1 | 10.16±0.80 | - | 1.0Max. | 203.2±3mm/Px20 |

2008

RELEASED FOR PUBLICATION

ALL RIGHTS RESERVED.

THIS DRAWING IS UNPUBLISHED.
COPYRIGHT 2008

| | | | | |
|--|------|--------------------------------|------------------|---------------|
| DIMENSIONS: mm | | DWN SUBHASH.M 19-Sep-08 | MATERIAL | FINISH |
| TOLERANCES UNLESS OTHERWISE SPECIFIED: | | CHK PRAKASH.S 19-Sep-08 | TE Connectivity | |
| 0 PLC | ±0.2 | APVD STEPHEN.P 19-Sep-08 | | |
| 1 PLC | ±0.1 | PRODUCT SPEC | SIZE | CAGE CODE |
| 2 PLC | ± | - | A 4 | 00779 |
| 3 PLC | ± | APPLICATION SPEC | DRAWING NO | RESTRICTED TO |
| 4 PLC | ± | - | C-1623720 | |
| ANGLES | ±5° | WEIGHT | CUSTOMER DRAWING | |
| | | SCALE 2:1 | | SHEET 1 OF 1 |
| | | | | REV BA2 |