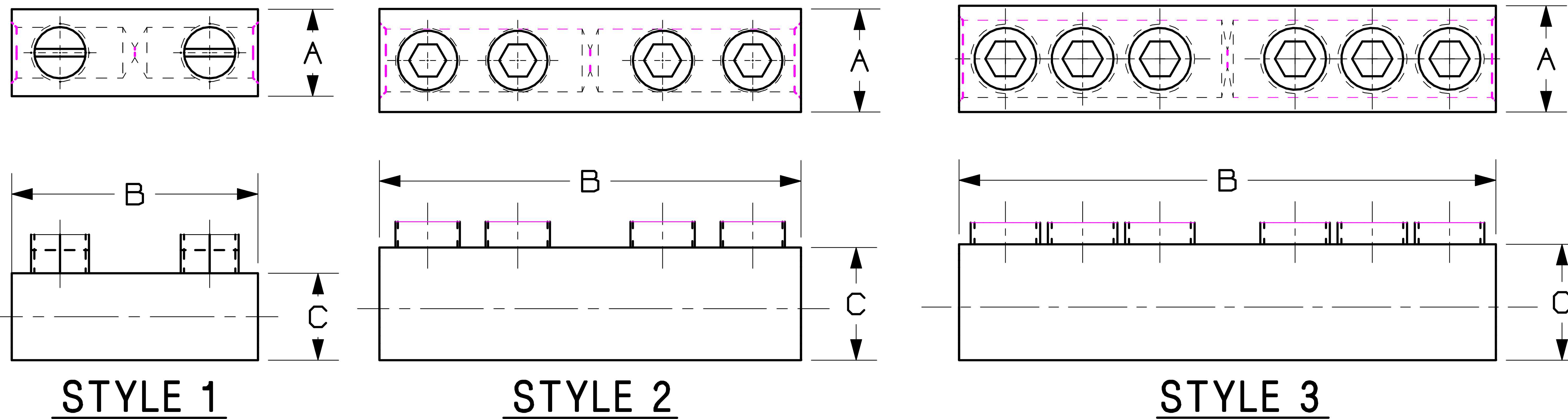


THIS COPY IS PROVIDED ON A RESTRICTED BASIS AND IS NOT TO BE USED IN ANY WAY DETRIMENTAL TO THE INTERESTS OF PANDUIT CORP.

NOTES:

1. ANTI-OXIDANT JOINT COMPOUND RECOMMENDED FOR ALL ALUMINUM CONNECTORS.
2. SPLICER-REDUCER AND SCREWS ARE TIN PLATED ALUMINUM.
3. MADE IN U.S.A.
4. LISTED PER U.L. 486B.
5. CSA CERTIFIED
6. THIS PART IS ROHS COMPLIANT.

ALUMINUM, MECHANICAL SPLICER-REDUCER TYPE: SR



PANDUIT PART NUMBER	STYLE	WIRE RANGE COPPER AND ALUMINUM	INSTALLATION TOOL	WIRE STRIP LENGTH	DIM A IN.	DIM B IN.	DIM C IN.
SR-2-XY	1	2-14AWG STRANDED 10-14AWG SOLID	SINGLE BLADE SCREW DRIVER	.63 IN	.50	1.38	.56
SR-0-XY	1	1/0-14AWG STRANDED 10-14AWG SOLID	SINGLE BLADE SCREW DRIVER	.88 IN	.75	1.91	.75
SR-4/0-XY	1	4/0-6AWG STRANDED	5/16 IN HEX ALLEN WRENCH	1.08 IN	1.00	2.31	1.13
SR-250-XY	2	250kcmil-6AWG STRANDED	5/16 IN HEX ALLEN WRENCH	1.90 IN	1.00	3.94	1.13
SR-350-XY	2	350kcmil-6AWG STRANDED	5/16 IN HEX ALLEN WRENCH	2.00 IN	1.13	4.19	1.19
SR-500-3Y	2	500kcmil-3/0AWG STRANDED	3/8 IN HEX ALLEN WRENCH	2.44 IN	1.37	5.00	1.40
SR-750-1Y	2	750-250kcmil STRANDED	1/2 IN HEX ALLEN WRENCH	3.06 IN	1.63	6.25	1.75
SR-1000-1Y	3	1000-500kcmil STRANDED	9/16 IN HEX ALLEN WRENCH	4.38 IN	1.72	8.69	1.88



CAD FILENAME/LAYERS C41540_00

PANDUIT CORP. TINLEY PARK, ILLINOIS

CUSTOMER DWG TYPE SR

UNLESS OTHERWISE SPECIFIED,
DIMENSIONAL TOLERANCES ARE:
(.X) ± --- (.XXX) ± ---
(.XX) ± --- ANGLES ± ---

UNLESS OTHERWISE SPECIFIED,
ALL DIMENSIONS ARE GIVEN
IN INCHES, THIRD ANGLE PROJECTION.

DRAWN BY
JHNU

MAT'L:
SEE NOTES

SCALE
NONE

00 10/05 JHNU LEM DRAWING RELEASED - ROHS COMPLIANT PC00485

DATE
10-10-05

DRAWING NO.
C41540

REV	DATE	BY	CHK	DESCRIPTION	ECN	SUP	PM

SIZE
A