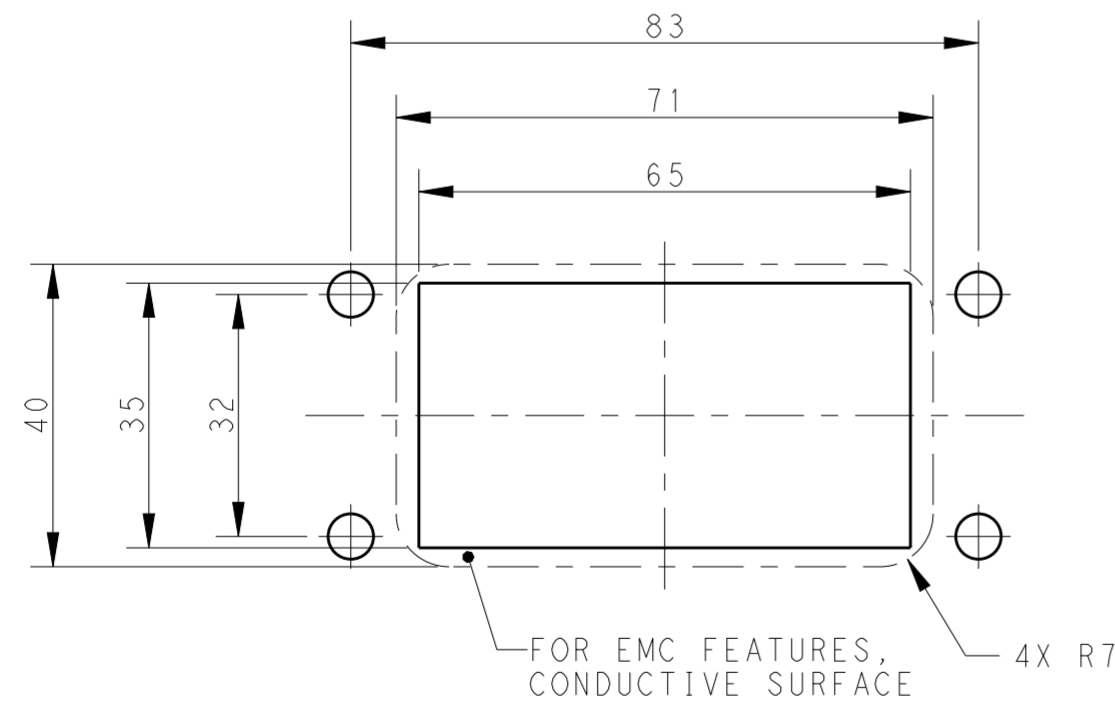
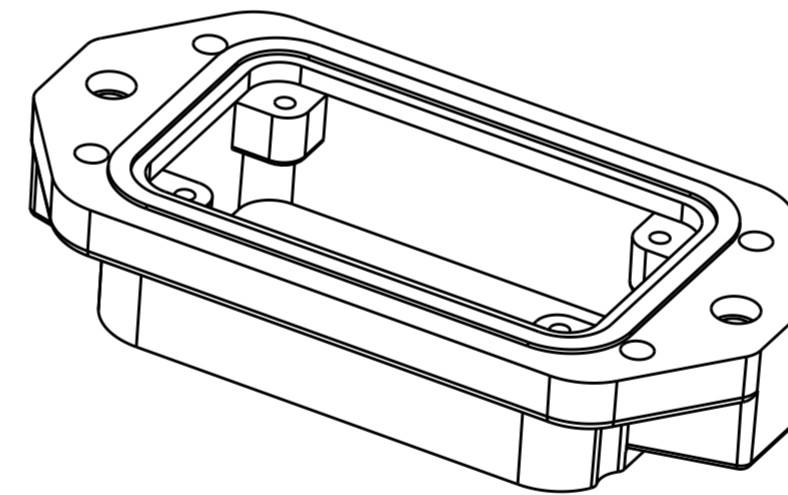
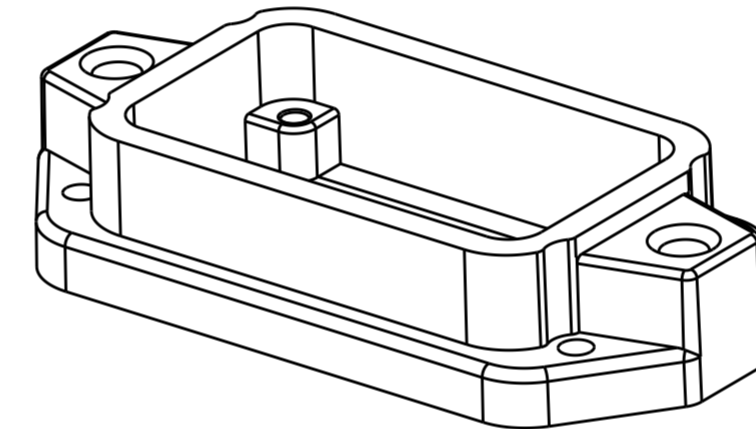
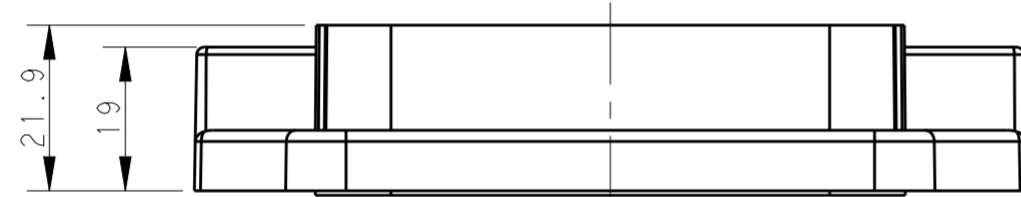
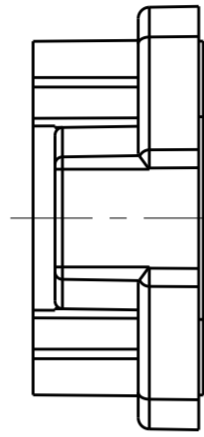
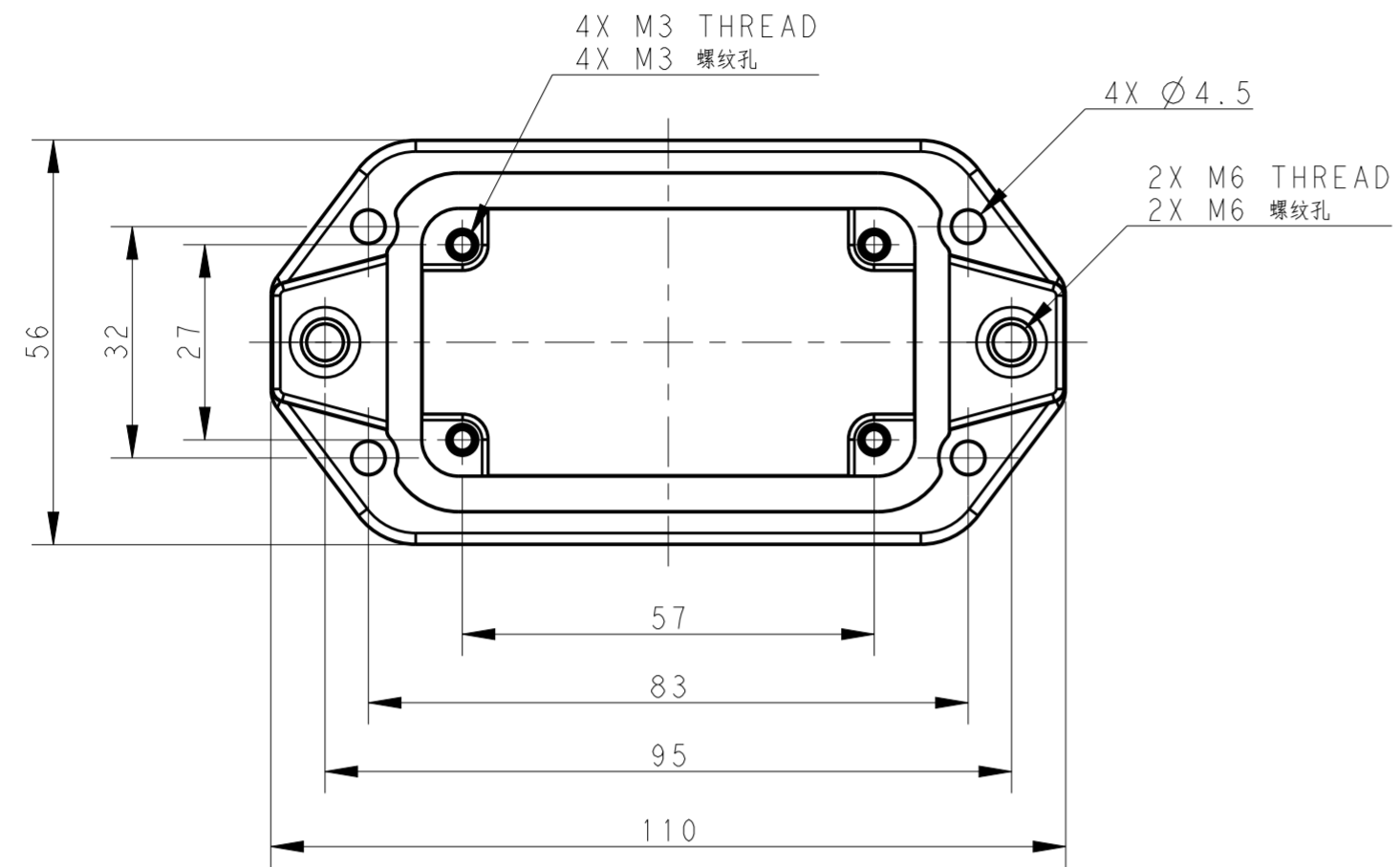


THIS DRAWING IS UNPUBLISHED. RELEASED FOR PUBLICATION 20  
 © COPYRIGHT 20 BY - ALL RIGHTS RESERVED.

REVISIONS				
P	LTR	DESCRIPTION	DATE	APVD
	A	INITIAL RELEASE	14OCT2016	DW CW



Panel Cut Out Dimension, Only for Reference  
 面板开口尺寸, 仅供参考

NOTES:  
 1. TECHNICAL CHARACTERISTICS:  
 HOUSING MATERIAL: DIE CAST ALUMINIUM ALLOY  
 SURFACE: SEE TABLE  
 DEGREE OF PROTECTION: IP68 (MATED)

注释  
 1. 技术参数:  
 壳体材料: 铝合金  
 表面处理: 见表格  
 防护等级: IP68 (配合)

T1932102000-009	H10BPR-AGC-EMC-C	H10BPR HOUSING, CENTER LOCKING, BULKHEAD MOUNTED, POWDER COATED, GREY H10BPR中部锁定开孔下壳 灰色
T1932101000-009	H10BPR-AGC-EMC-C	H10BPR HOUSING, CENTER LOCKING, BULKHEAD MOUNTED, POWDER COATED, SILVER WHITE H10BPR中部锁定开孔下壳 银白色
T1932100000-009	H10BPR-AGC-EMC-C	H10BPR HOUSING, CENTER LOCKING, BULKHEAD MOUNTED, POWDER COATED, BLACK H10BPR中部锁定开孔下壳 黑色
PART NUMBER 料号	DESCRIPTION 描述	

THIS DRAWING IS A CONTROLLED DOCUMENT.		DWN 14OCT2016 DAVID WANG	TE Connectivity
DIMENSIONS: mm		CHK 14OCT2016 CHRIS WANG	
		APVD 14OCT2016 XIANG XU	
TOLERANCES UNLESS OTHERWISE SPECIFIED:		PRODUCT SPEC	NAME H10BPR-AGC-EMC-C
0 PLC ±		108-137191	SIZE A2
1 PLC ±		APPLICATION SPEC	CAGE CODE -
2 PLC ±		114-137191	DRAWING NO G-T193210X000009
3 PLC ±		WEIGHT -	RESTRICTED TO -
4 PLC ±		CUSTOMER DRAWING	SCALE 1:1
ANGLES ±		SCALE 1:1	SHEET 1 OF 1
FINISH -		SCALE 1:1	REV A