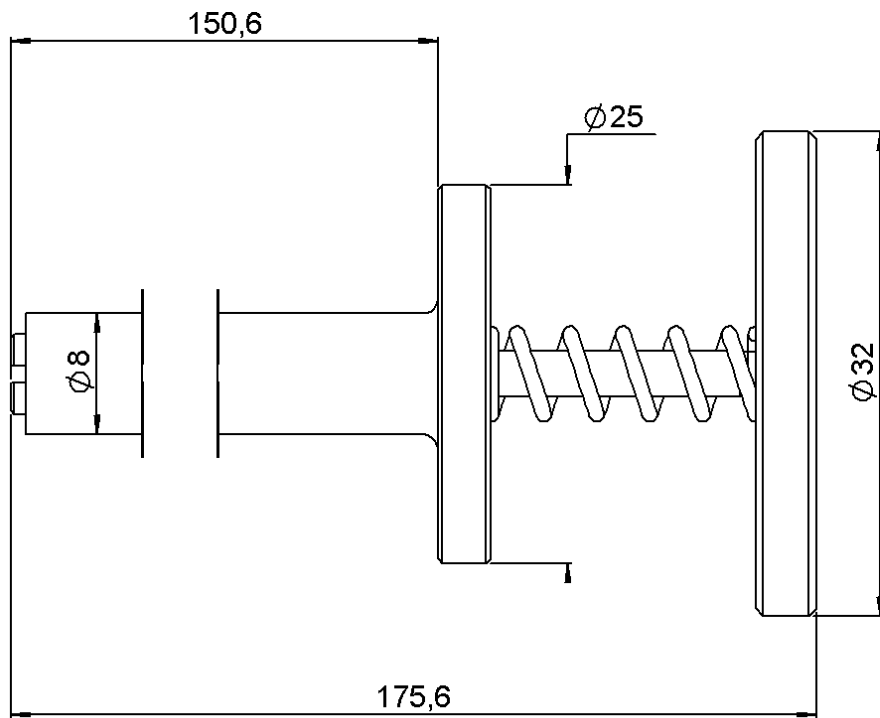


**SMP DISENGAGEMENT TOOL**

**R282.918.120**

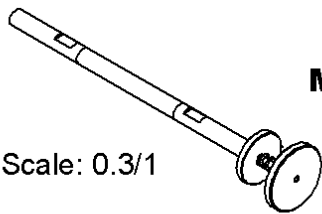
**FOR R222705**

Series : **OUT**

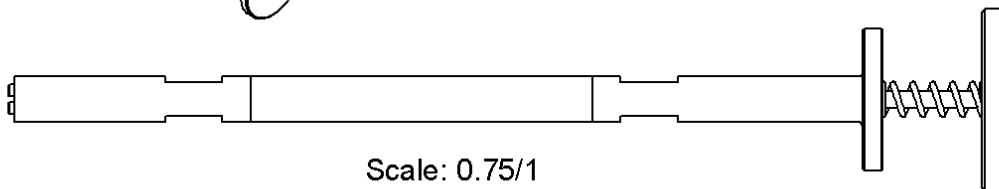


**MATERIAL: STAINLESS STEEL PASSIVATED**

Scale: 0.3/1



Scale: 0.75/1



Issue : 0327 A

In the effort to improve our products, we reserve the right to make changes judged to be necessary.



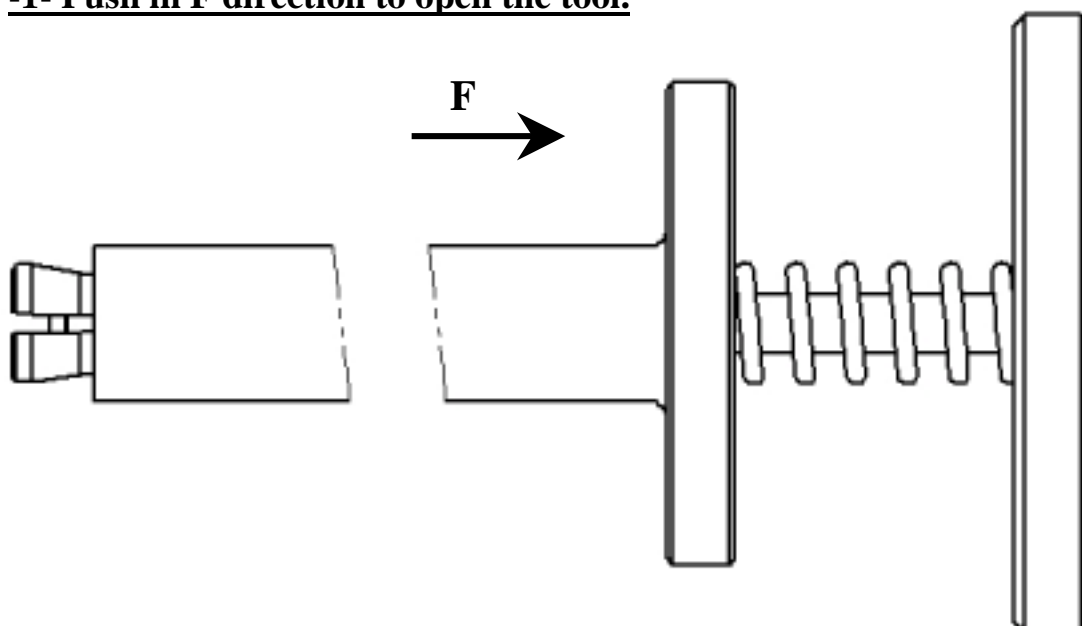
## SMP DISENGAGEMENT TOOL

**R282.918.120**

FOR R222705

Series : OUT

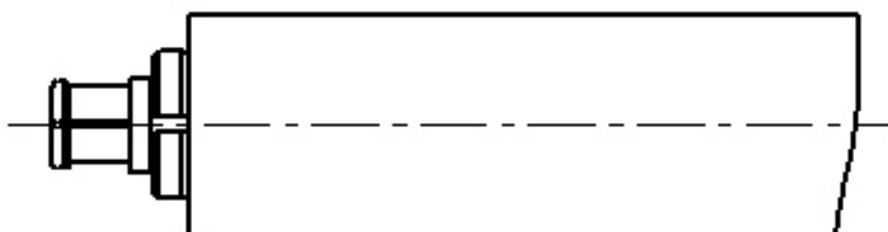
**-1- Push in F direction to open the tool.**



**-2- Place the adaptor into the tool until it bottoms against.**



**-3- Push on the adaptor, and release the smallest tool diameter.**  
**(the force to fix the adaptor is applied by a spring).**



**-Push on the biggest tool diameter to place the adaptor.**

**-To remove the adaptor, pull off on the biggest tool diameter.**

Issue : 0327 A

In the effort to improve our products, we reserve the right to make changes judged to be necessary.

