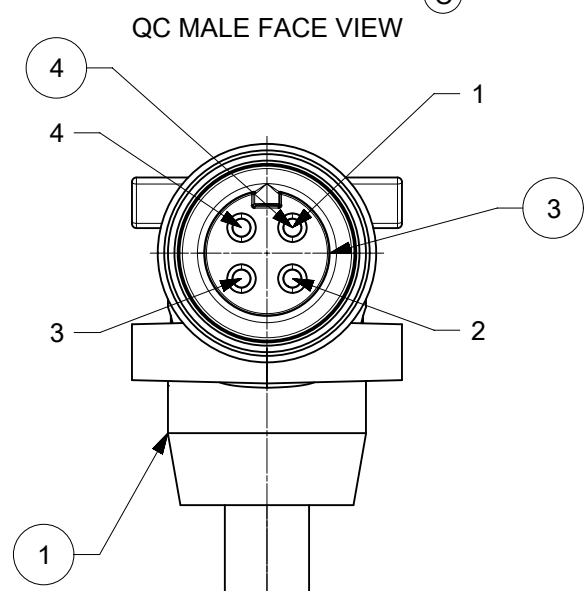
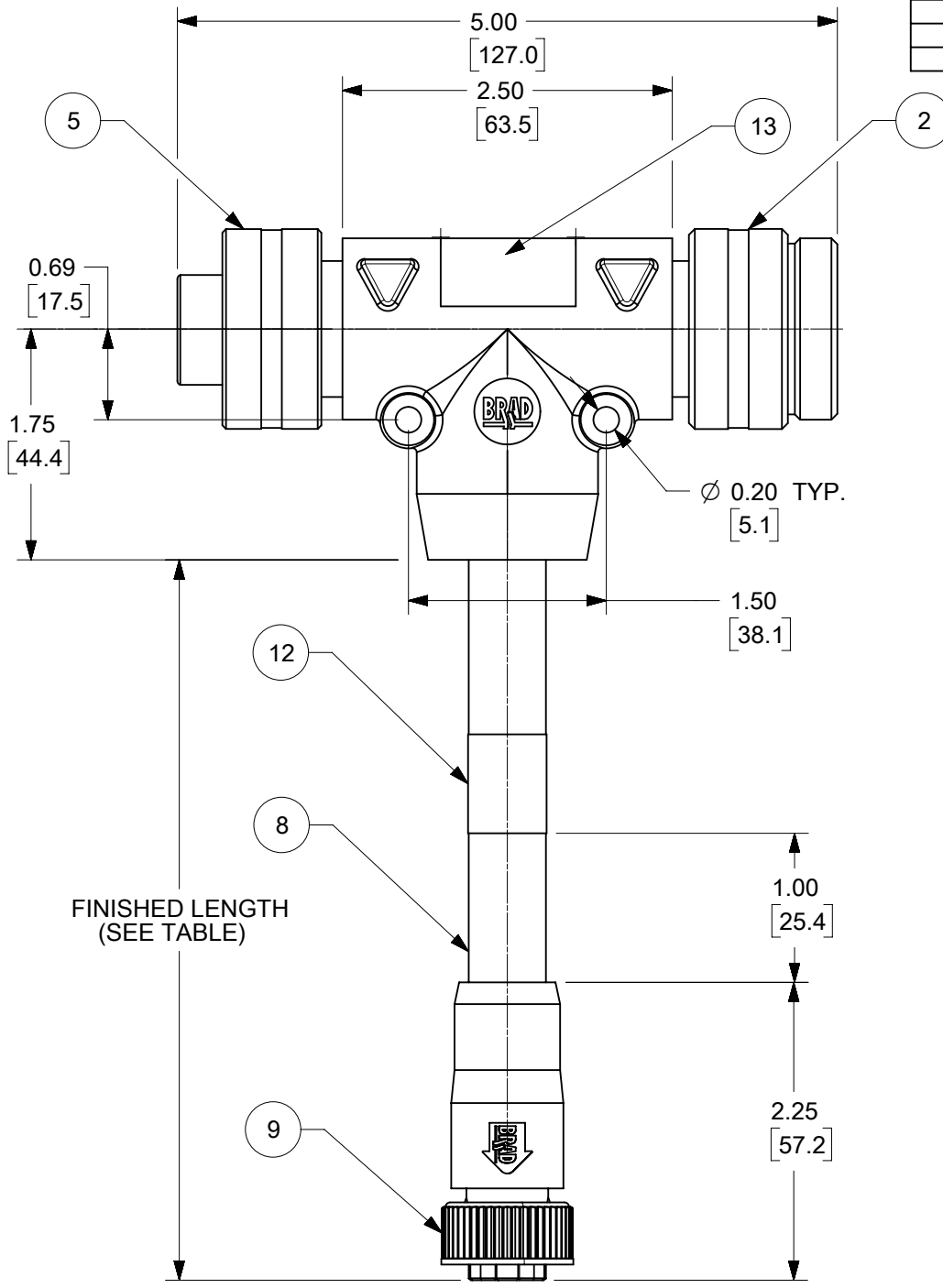
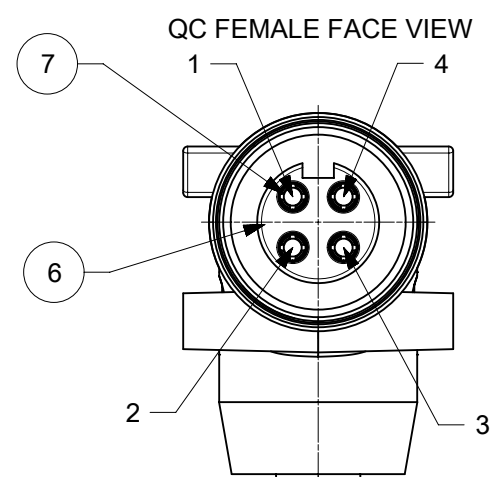


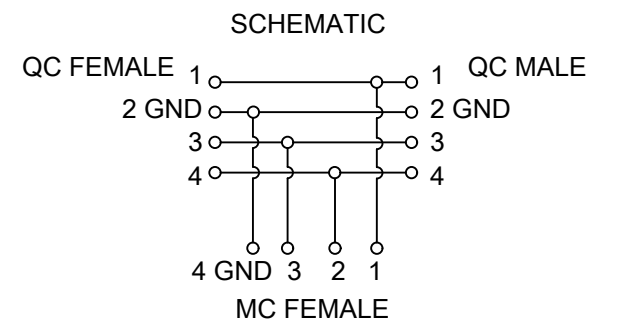
| MATERIAL# | ENGINEERING# | FINISHED LENGTH | REF. CABLE | CABLE COLOR |
|------------|-----------------|---------------------------------|------------------------|-------------|
| 1300680095 | TC40300A56M020G | 6.56' +3.50"-0 (2.0M +88.9MM-0) | A56 (STANDARD) | BLACK |
| 1300680096 | TC40300A79M020G | 6.56' +3.50"-0 (2.0M +88.9MM-0) | A79 (FLEX RATED 3 MIL) | GRAY |
| 1300680113 | TC40300K27M020G | 6.56' +3.50"-0 (2.0M +88.9MM-0) | K27 (HI FLEX 10 MIL) | BLACK |



TC40300K27M010G

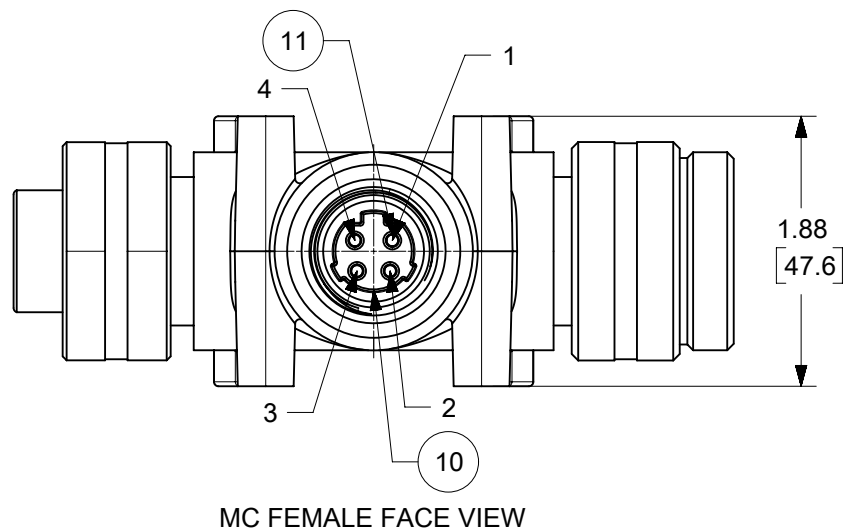
FINISHED LENGTH
M001 = 0.1 METER
M010 = 1 METER
M100 = 10 METER

CABLE TYPE:
A56 - 14AWG TC-ER BLACK TPE
A79 - 14AWG TC-ER GRAY TPE-FLEX RATED
K27 - 14AWG TC-ER BLACK TPE-HI FLEX



- NOTES:**
1. MATERIAL: AS NOTED
 2. FINISH: AS NOTED
 3. ELECTRICAL:
VOLTAGE: 600V AC/DC
MAX THRU CURRENT: 25A
MAX DROP CURRENT: 15A
 4. PROTECTION: IP67 (WHEN MATED)
 5. AGENCY CERTIFICATIONS:
UL 2237 LISTED, FILE E258922
 6. TEMP RANGE: -20°C TO 90°C
 7. ALL DIMS ARE FOR REFERENCE UNLESS NOTED OTHERWISE
 8. COUPLING THREADS:
QC: 1 3/8-16
MC: 7/8-16
 9. MATES WITH: MC ALT-KEY AND QC 4P

| | | | |
|----|-----------------------------------|------------|---------------|
| 13 | P/N LABEL | VINYL | BLACK/YELLOW |
| 12 | WARNING LABEL | VINYL | BLACK/ORANGE |
| 11 | MC SOCKET CONTACT | CU ALLOY | GOLD PLATED |
| 10 | MC FEMALE INSERT | PVC | BLACK |
| 9 | MC COUPLING NUT | ZINC ALLOY | BLACK E-COAT |
| 8 | CABLE, 14 AWG-4 TYPE TC-ER, STOOV | PVC | SEE CHART |
| 7 | QC SOCKET CONTACT | CU ALLOY | GOLD PLATED |
| 6 | QC FEMALE INSERT | PVC | BLACK |
| 5 | QC FEMALE COUPLING NUT | ALUMINUM | CLEAR ANODIZE |
| 4 | QC PIN CONTACT | CU ALLOY | GOLD PLATED |
| 3 | QC MALE INSERT | PVC | BLACK |
| 2 | QC MALE COUPLING NUT | ALUMINUM | CLEAR ANODIZE |
| 1 | OVERMOLD | PVC | BLACK |
| # | DESCRIPTION | MATERIAL | FINISH |



CABLE LENGTH TOLERANCES

| | |
|-------------------------|-------------------------|
| >.3M [1FT] | +19mm-0 [+1.75in-0] |
| .3 - .9M [1 - 3FT] | +44.5mm-0 [+1.75in-0] |
| .9 - 1.8M [3 - 6FT] | +55.6mm-0 [+2.19in-0] |
| 1.8 - 3.7M [6 - 12FT] | +88.9mm-0 [+3.50in-0] |
| 3.7 - 7.3M [12 - 24FT] | +165.1mm-0 [+6.50in-0] |
| 7.3-14.6M [24 - 48FT] | +317.5mm-0 [+12.50in-0] |
| 14.6 - 30.5M [48-100FT] | +622.3mm-0 [+24.50in-0] |
| OVER 30M [100FT] | +2% OF FINISHED LENGTH |

| SYMBOLS | | THIS DRAWING CONTAINS INFORMATION THAT IS PROPRIETARY TO MOLEX ELECTRONIC TECHNOLOGIES, LLC AND SHOULD NOT BE USED WITHOUT WRITTEN PERMISSION | |
|---------|--|---|---|
| ▽ = 0 | DIMENSION UNITS | SCALE | CURRENT REV DESC: UPDATE E NUMBER, UPDATE TO NX |
| ▽ = 0 | INCH/MM | 1:1.333333 | |
| ▽ = 0 | GENERAL TOLERANCES (UNLESS SPECIFIED) | | |
| ▽ = 0 | ANGULAR TOL | ± 0.5° | EC NO: 626221 |
| ▽ = 0 | 4 PLACES | ± | DRWN: CCHRSTKA 2019/10/23 |
| ▽ = 0 | 3 PLACES | ± | CHK'D: MZIELINSKI 2019/10/23 |
| ▽ = 0 | 2 PLACES | ± 0.13 | APPR: BWOODMAN 2019/10/25 |
| ▽ = 0 | 1 PLACE | ± 0.25 | INITIAL REVISION: |
| ▽ = 0 | 0 PLACES | ± | DRWN: BRUPERT 2011/11/02 |
| ▽ = 0 | DRAFT WHERE APPLICABLE MUST REMAIN WITHIN DIMENSIONS | | APPR: JFMURPHY 2012/03/20 |
| ▽ = 0 | THIRD ANGLE PROJECTION | DRAWING | SERIES |
| | | B-SIZE | 130068 |
| | | MATERIAL NUMBER | CUSTOMER |
| | | SD-130068-018 | GENERAL MARKET |
| | | DOC TYPE | DOC PART |
| | | PSD | 001 |
| | | REVISION | C |
| | | SHEET NUMBER | 1 OF 1 |