

## RG 85 III - Keylock switch, round design, 1 NO, without lens

### 3.99.400.141/3000

Please order lenses separately.



#### Dimensions

Mounting grid min.	55 x 35 mm
Length	64 mm
Width	34 mm (35 mm with sealing)

#### Mechanical design

Version	round
Mounting	on U-rails or single mounting
Terminals	8-pin Micro-Match® female connector
Contact system	cross contact
Contact arrangement	1 NO
Contact materials	Au alloy
Symbol illumination	none
Edge illumination	4 LED red
Lock	cylinder lock, lock type 5201
Key removal position	Pos. 0 + 1

#### Mechanical characteristics

Rotating angle	1 x 90°
Switching travel NO	1 mm

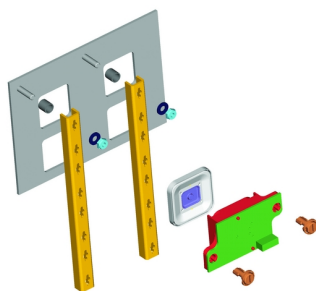
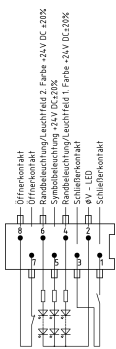
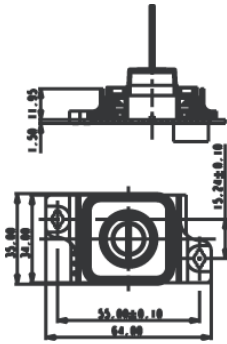
#### Electrical characteristics

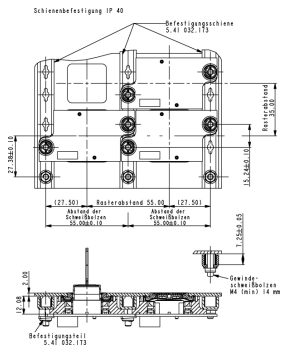
Rated voltage min.	3 V
Rated voltage max.	35 V
Rated current min.	0.1 mA
Rated current max.	100 mA
Rated power max.	1 W
Contact resistance when new max.	100 mΩ
Contact resistance acc. to life max.	3 Ω
Bouncing time max.	10 ms
Operating voltage for LED	24 <sup>±20%</sup> V
Input current LED	per color/LED row 9 - 16 mA

#### Other specifications

Ambient temp. operating min.	-25 °C
Ambient temp. operating max.	+70 °C
Storage temperature min.	-40 °C
Storage temperature max.	+80 °C
Environmental resistance	acc. to IEC 60068-2-14, -30, -33 and -78

Operating life min. (operations)	50,000 cycle
Degree of protection rail mounting	IP40 (DIN EN 60529)
Degree of protection single mounting	IP65 (DIN EN 60529)
Flammability of materials	according to UL 94 HB
ROHS compliant	yes
REACH compliant	yes





Einzelbefestigung

