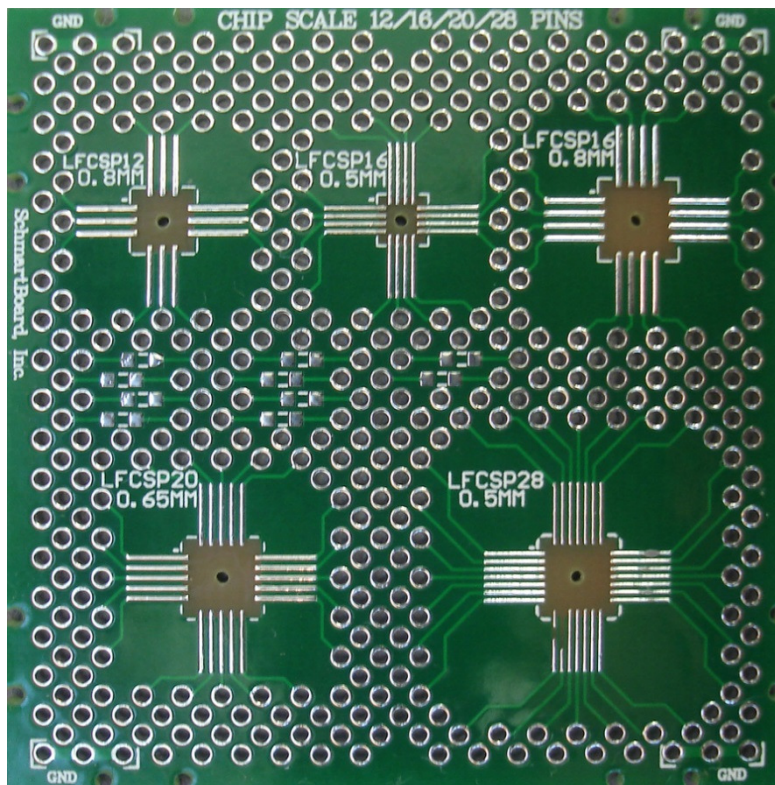
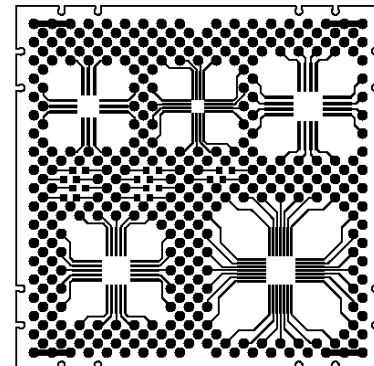


202-0042-01

16 & 28 Pins .5mm Pitch, 20 Pin .65mm Pitch  
and 12 & 16 Pin .8mm Pitch for QFN  
With Schmartboard | ez™ Technology



Actual Size



Supports 16 & 28 Pins with a .5mm pitch, 20 Pin with a .65mm pitch and  
12 & 16 Pins with a .8mm pitch for QFN devices

This 2" x 2" Schmartboard utilizes "Schmartboard | ez". Only  
Schmartboard has this patented technology to assure fast, easy and  
flawless hand soldering of surface mount components!

Related Part Numbers:

912-0042-01: 10 Pack of 202-0042-01 Schmartboards

Schmartboard | ez  
Surface Mount Family



Schmartboard, Inc.  
37423 Fremont Blvd.  
Fremont, CA 94536

510-744-9900(P)  
510-744-9909(F)  
<http://www.schmartboard.com>  
<http://www.facebook.com/Schmartboard>  
<http://www.twitter.com/Schmartboard>